

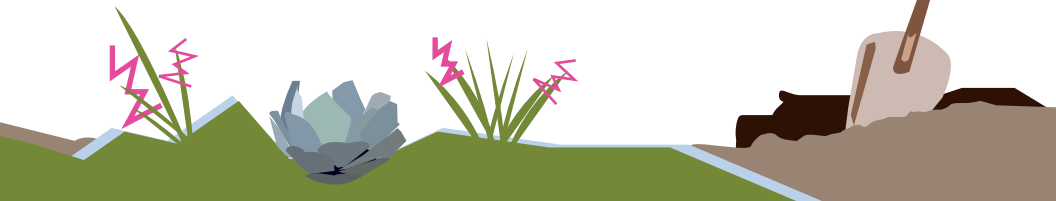
COMMUNITY MEETING

WATER EFFICIENT LANDSCAPE ORDINANCE 2015 UPDATE



CUPERTINO

WHEN: Monday, February 1st, 2016 at 6:30 p.m.
WHERE: Cupertino Community Hall
10350 Torre Avenue (next to the Library)
WHAT: Come learn how the City of Cupertino will further promote efficient landscapes by updating the City's existing Water Efficient Landscape Ordinance (WELO) to align with the State's Department of Water Resources' recently updated requirements.



DOES THIS AFFECT ME?

New single-family projects (and other development projects) associated with a **building permit, plan check, or design review** that include landscape areas of **500 sq. ft. or more** are subject to this ordinance. The previous threshold was 2,500 sq. ft, which shall remain for the rehabilitation of existing landscapes.

HOW MUCH WATER WILL THIS ORDINANCE SAVE?

The updated ordinance is expected to save **12,000 gallons per year** (roughly 20%) per new home and will reduce water use by 35% for new commercial landscapes.

HOW CAN I LEARN MORE?

- The State's Ordinance and Fact Sheets are available on the Department of Water Resources website at www.water.ca.gov.
- Visit www.cupertino.org/savewater for additional information, the City's Draft Ordinance (when available), meeting updates, and to sign up for e-notifications.

Visit us at www.cupertino.org/savewater and follow @thinkdrought

