



PUBLIC WORKS DEPARTMENT
Timm Borden, Director

CITY HALL
10300 TORRE AVENUE ~ CUPERTINO, CA 95014-3266
(408) 777-3354 ~ FAX (408) 777-3333

ADDENDUM NO. 1
SIDEWALK CONSTRUCTION-McCLELLAN ROAD
PROJECT NO. 2016-20
BID OPENING: JULY 12, 2016
2:00 P.M.

ISSUED DATE: JUNE 30, 2016

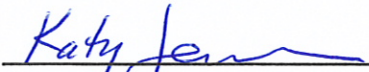
The following revisions are hereby made to the above referenced project.

1. Replace Document 10 "Table of Contents" with revised Document 10 "Table of Contents" attached to this addendum. Technical Specification section has been added.
2. Replace sheet 100-1 of Document 100 "Advertisement for Bids" with revised sheet 100-1 of Document 100 "Advertisement for Bids" attached to this addendum. City Project Number has been corrected and Contract Time language has been revised.
3. Replace sheet 400-3 of Document 400 "Bid Form" with revised sheet 400-3 of Document 400 "Bid Form" attached to this addendum. Bid Item, Relocate Fence, has been added to Schedule of Bid Prices.
4. Insert Section 02 82 10 "Fence Relocation" attached to this addendum to Technical Specifications. Technical Specification "Fence Relocation" has been added.
5. Replace Plan Sheet IP01 and IP02 with revised Plan Sheet IP01 and IP02 attached to this addendum. Fence Relocation has been added to Plans.

All questions regarding this project must be transmitted in writing to John Raaymakers, Public Works Project Manager. Fax number is 408-777-3333 and email address is Johnr@cupertino.org.

Please indicate receipt of this addendum on the last page of the Proposal. Failure to do so may cause rejection of your bid.

APPROVED BY:

for 
Timm Borden
-Director of Public Works

DOCUMENT 00010

TABLE OF CONTENTS

DIVISION 0 & 1 - GENERAL REQUIREMENTS

INTRODUCTORY DOCUMENTS

| Document | Title |
|----------|---------------------------------------|
| 00001 | Title Page |
| 00002 | Signature Page |
| 00003 | Project Directory |
| 00007 | Seals Page |
| 00010 | Table of Contents |
| 00012 | Caltrans / City Cross Reference Table |

BIDDING DOCUMENTS

| Document | Title |
|----------|------------------------------------------------------------------------|
| 00100 | Advertisement for Bids |
| 00200 | Instructions to Bidders |
| 00201 | Bid Submittal and Site Map |
| 00210 | Indemnity and Release Agreement |
| 00320 | Geotechnical Data, Hazardous Materials Surveys and Existing Conditions |
| 00400 | Bid Form |
| 00411 | Bond Accompanying Bid |
| 00430 | Subcontractors List |
| 00450 | Statement of Qualifications |
| 00481 | Non-Collusion Affidavit |
| 00482 | Bidder Certifications |

CONTRACTING DOCUMENTS

| Document | Title |
|----------|-------------------------------------------------------------|
| 00510 | Notice of Award |
| 00520 | Contract |
| 00530 | Insurance Forms |
| 00550 | Notice to Proceed |
| 00610 | Construction Performance Bond |
| 00620 | Construction Labor and Material Payment Bond |
| 00630 | Guaranty |
| 00650 | Agreement and Release of Any and All Claims |
| 00660 | Substitution Request Form |
| 00680 | Escrow Agreement for Security Deposits in Lieu of Retention |

GENERAL CONDITIONS DOCUMENTS

| Document | Title |
|----------|------------------------|
| 00700 | General Conditions |
| 00821 | Insurance |
| 00822 | Apprenticeship Program |

TECHNICAL SPECIFICATIONS

| Section | Title |
|----------|---------------------------------------------------|
| 01 36 00 | Field Engineering & Survey Work |
| 01 55 26 | Traffic Control Requirements |
| 01 56 39 | Tree Protection |
| 01 57 50 | Temporary Water Pollution Control |
| 01 58 00 | Temporary Erosion Control |
| 01 71 33 | Protection of Adjacent Construction and Utilities |
| 02 41 19 | Selective Demolition |
| 02 80 00 | Boulder Relocation |
| 02 82 10 | Fence Relocation |
| 02 83 00 | Adjust Utility Box to Grade |
| 03 20 00 | Concrete Reinforcement |
| 03 31 00 | Structural Cast-in-Place Concrete |
| 10 14 53 | Traffic & Parking Signage |
| 31 10 00 | Site Clearing |
| 31 13 13 | Selective Tree Removal |
| 31 20 00 | Earthwork |
| 32 01 90 | Pruning |
| 32 11 23 | Aggregate Base Courses |
| 32 12 16 | Asphalt Paving |
| 32 13 13 | Concrete Paving |
| 32 17 23 | Striping & Pavement Markings |
| 32 91 00 | Topsoil |
| 33 05 13 | Manholes and Structures |
| 33 41 00 | Storm Drainage |

END OF SECTION



DOCUMENT 00100

ADVERTISEMENT FOR BIDS

NOTICE: THE CITY OF CUPERTINO, a Municipal Corporation of the State of California (“City”) hereby gives notice that it will accept Bids for construction of the following public work:

**CITY PROJECT NUMBER 2016-20
SIDEWALK CONSTRUCTION – MCCLELLAN ROAD**

1. **BID SUBMISSION:** The City uses a two-part Bid process with Bids in **Envelope “A”** and Statements of Qualification and Financial information in **Envelope “B”**. City will accept **Envelope “A” and Envelope “B”** before **2:00 p.m. on July 12, 2016 in the City Clerks Office**. Bids will be publicly read at 2:10 p.m. in the City Community Hall at 10350 Torre Avenue (adjacent to City Hall). City’s representative will call out the designated time in the Office of the City Clerk, 10300 Torre Avenue, stating that the period for accepting Bids is closed. The Bid opening will be in accordance with procedures set forth in Document 00200 (Instructions to Bidders).
2. **CONTACT INFORMATION:**
Public Works Department
408 777 3354 general
408 777 3333 fax
capitalprojects@cupertino.org
City Hall, 10300 Torre Avenue
Cupertino, CA 95014
3. **STATEMENT OF QUALIFICATIONS:** Each Bidder shall be required to submit a “Statement of Qualifications” in accordance with Document 00200 (Instructions to Bidders) and Document 00450 (Statement of Qualifications for Construction Work).
4. **DESCRIPTION OF THE WORK:** Work includes installation sidewalk, curb, gutter and park strip. In addition, the scope includes construction of o curb ramps and driveways as well as a drainage inlet, pavement restoration and other pertinent work necessary to construct the project as shown on approve plans and specified in the project specifications.
5. **CONTRACT TIME:** Final Acceptance is to occur no later than 21 calendar days following the effective date of Notice to proceed, in accordance with contract requirements. A notice to proceed is anticipated to be issued on or before July 18, 2016.
6. **REQUIRED CONTRACTOR’S LICENSE:** A California Class “A” General Engineering Contractor, or C-12, Earth work and Paving contractor’s license is required to Bid this Contract. Joint ventures must secure a joint venture license prior to award of this Contract. Removal, handling, and/or disposal of hazardous materials may, by law, require hazardous substance removal certification by the Contractor’s State License Board.
7. **Required Contractor and Subcontractor Registration [Applies if bid is submitted on or after March, 1, 2015 or if Contract is awarded on or after April 1, 2015. Labor Code Section 1771.1.]**
 - A. Owner shall accept Bids only from Bidders that (along with all Subcontractors listed in Document 00430 Subcontractor List) are currently registered and qualified to perform public work pursuant to Labor Code Section 1725.5.
 - B. Subject to Labor Code Sections 1771.1(c) and (d), any Bid not complying with paragraph 7. A. above shall be returned and not considered; provided that if Bidder is a joint venture (Business & Professions Code Section 7029.1) or if federal funds are involved in the Contract (Labor Code Section 1771.1(a)), Owner may accept a

Contractor's Name: _____

Project No.2016-20
Addendum #1

SCHEDULE OF BID PRICES

All Bid items, including lump sums and unit prices, must be filled in completely. Allowances and Alternative Bid items are described in Document 00800 (Special Conditions). Quote in figures only, unless words are specifically requested. **Please Note that time extensions will NOT be permitted with the acceptance of any or all of the Alternative Bid Items listed below.**

| ITEM | SPEC REF | DESCRIPTION | UNIT | EST QTY | UNIT PRICE | TOTAL |
|-----------------------|----------|--------------------------------------------------|------|---------|------------|-------|
| 1 | | MOBILIZATION | 1 | LS | | |
| 2 | 01 36 00 | FIELD ENGINEERING AND SURVEY WORK | 1 | LS | | |
| 3 | 01 55 26 | TRAFFIC CONTROL AND CONSTRUCTION AREA SIGNS | 1 | LS | | |
| 4 | 01 56 39 | TREE PROTECTION | 1 | LS | | |
| 5 | 01 57 50 | TEMPORARY WATER POLLUTION CONTROL | 1 | LS | | |
| 6 | 01 71 33 | UTILITY LOCATION | 1 | LS | | |
| 7 | 02 41 19 | REMOVE CURB AND GUTTER | 50 | LF | | |
| 8 | 02 41 19 | REMOVE DRAINAGE INLET | 1 | EA | | |
| 9 | 02 41 19 | REMOVE PCC SIDEWALK AND WALKWAY | 260 | SF | | |
| 10 | 02 41 19 | REMOVE WOODEN HEADER BOARD | 100 | LF | | |
| 11 | 02 80 00 | RELOCATE BOULDER | 1 | EA | | |
| 12 | 02 82 10 | RELOCATE FENCE | 1 | LS | | |
| 13 | 02 83 00 | ADJUST MANHOLE TO GRADE | 1 | EA | | |
| 14 | 02 83 00 | ADJUST WATER METER BOX TO GRADE | 1 | EA | | |
| 15 | 10 14 53 | RELOCATE ROADSIDE SIGN | 5 | EA | | |
| 16 | 31 10 00 | SITE CLEARING | 1 | LS | | |
| 17 | 31 13 13 | REMOVE TREE | 3 | EA | | |
| 18 | 31 20 00 | EARTHWORK (Final Pay Item) | 80 | CY | | |
| 19 | 32 01 90 | PRUNE EXISTING TREES | 1 | LS | | |
| 20 | 32 11 23 | CLASS 2 AGGREGATE BASE | 30 | CY | | |
| 21 | 32 12 16 | HMA (TYPE A) | 16 | TONS | | |
| 22 | 32 13 13 | CONSTRUCT SIDEWALK, WALKWAY AND DRIVEWAY CONFORM | 930 | SF | | |
| 23 | 32 13 13 | CONSTRUCT TYPE A2-6 CURB AND GUTTER | 160 | LF | | |
| 24 | 32 13 13 | CONSTRUCT CURB RAMP | 2 | EA | | |
| 25 | 32 13 13 | CONSTRUCT DRIVEWAY | 290 | SF | | |
| 26 | 32 13 13 | CONSTRUCT VALLEY GUTTER | 60 | SF | | |
| 27 | 32 17 23 | STRIPING AND PAVEMENT MARKINGS | 1 | LS | | |
| 28 | 32 91 00 | TOPSOIL | 9 | CY | | |
| 29 | 33 05 13 | CALTRANS G5 INLET | 1 | EA | | |
| TOTAL BASE BID | | | | | | |

SECTION 02 82 10 FENCE RELOCATION

PART 1 - GENERAL

1.01 SECTION INCLUDES:

- A. All work and materials for relocation of fence required to complete the project.

PART 2 - PRODUCTS

- A. Concrete for fence posts shall conform to section 32 13 13 Concrete Paving.
- B. Wooden fence posts shall match the size and type of the existing fence posts or as approved by the Engineer.
- C. Nails, brackets and fasteners shall match the size and type of the existing or as approved by the Engineer.

PART 3 - EXECUTION

- A. Contractor shall coordinate with the City to arrange access to perform work and have inspections completed.
- B. Contractor shall remove all affected concrete post foundations. Voids left by post foundation removal shall be backfilled with native material and a minimum of 8 inches of topsoil to match finished grade.
- C. Existing fence material shall be salvaged and used to reconstruct fence, in kind, in the new location as shown on the plans.
- D. Contractor shall insure that areas of fence relocation work are graded to drain with no ponding on site.

PART 4 - MEASUREMENT AND PAYMENT

4.1 MEASUREMENT

- A. The work performed under this section will be measured on a lump sum basis.

4.2 PAYMENT

- A. The contract lump sum price paid for Relocate Fence shall include full compensation for furnishing all labor, materials, tools, equipment, and incidentals, and for doing all the work involved in relocating fence, including removal and disposal of materials not used in the relocation, excavation and forming of post foundations, complete in place, as specified in these specifications, and as directed by the Engineer.

END OF SECTION 02 82 10



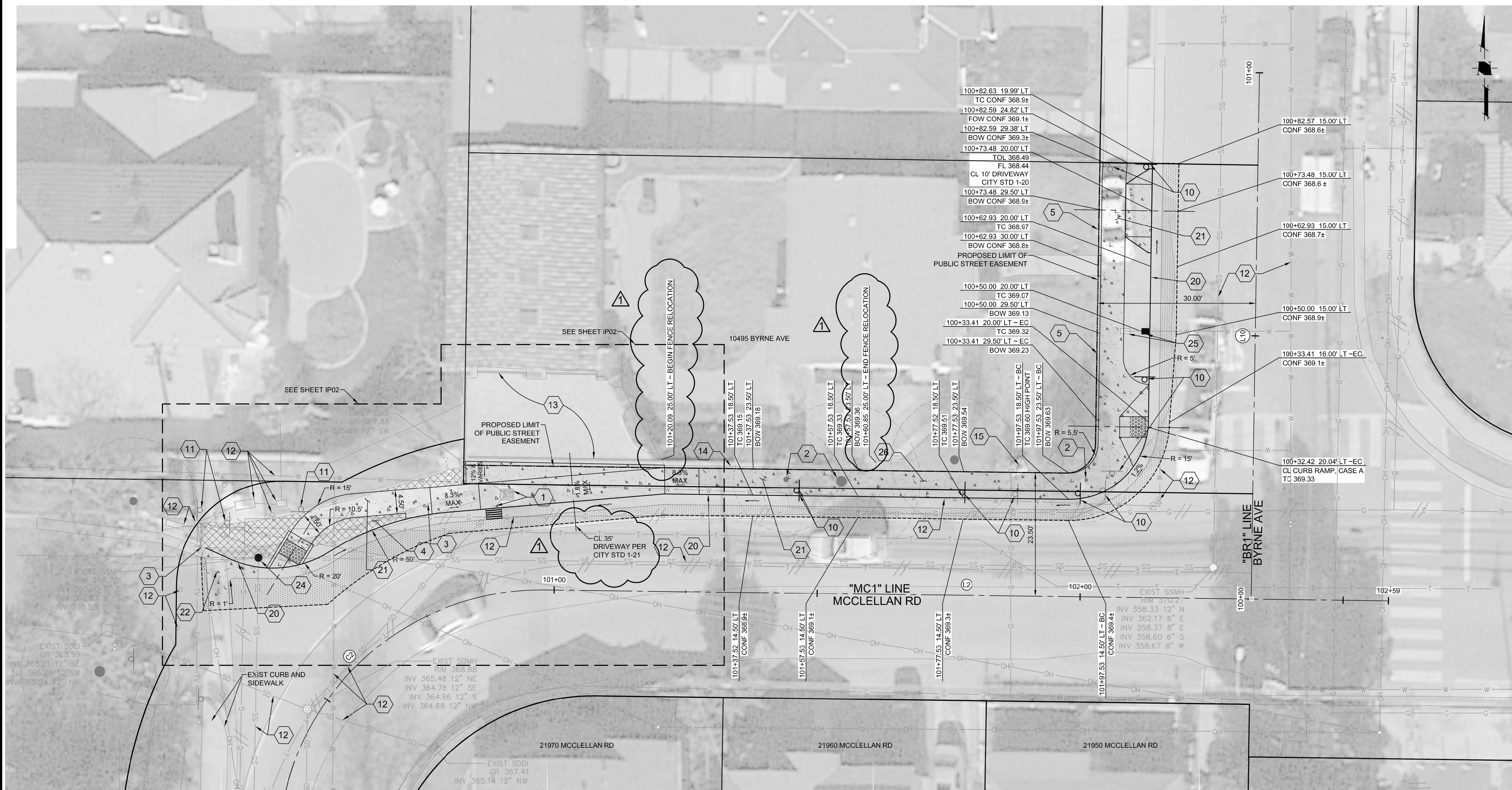
Land Use Entitlements
Land Planning
Landscape Architecture
Civil Engineering
Utility Design
Land Surveying
Stormwater Compliance

1570 Oakland Road (408) 487-2200
San Jose, CA 95131 HMHca.com



CUPERTINO

**CITY OF CUPERTINO
MCCELLELLAN ROAD
SIDEWALK CONSTRUCTION
CUPERTINO, CALIFORNIA**

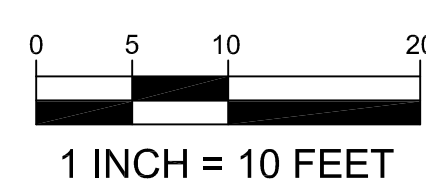


PLAN
SCALE: 1" = 10'

| "MC1" ALIGNMENT DATA TABLE | | | | | | |
|----------------------------|---------|---------------|--------|---------|--------------------------------------------------|--------------------------------------------------|
| SEGMENT | LENGTH | BEARING/Delta | RADIUS | TANGENT | START | END |
| L1 | 19.63' | N00°44'25"E | | | STA: 100+00.00 N: 1941070.97 E: 6108291.92 | STA: 100+19.63 N: 1941090.60 E: 6108292.17 |
| C2 | 78.55' | 90°00'43" | 50.00' | 50.01' | STA: 100+19.63 N: 1941090.60 E: 6108292.17 | STA: 100+98.18 N: 1941139.95 E: 6108342.82 |
| L2 | 160.40' | S89°14'52"E | | | STA: 100+98.18 N: 1941139.95 E: 6108342.82 | STA: 102+58.57 N: 1941137.84 E: 6108503.21 |

| "BR1" ALIGNMENT DATA TABLE | | | | | | |
|----------------------------|---------|---------------|--------|---------|--------------------------------------------------|--------------------------------------------------|
| SEGMENT | LENGTH | BEARING/Delta | RADIUS | TANGENT | START | END |
| L10 | 100.00' | N00°53'48"E | | | STA: 100+00.00 N: 1941138.19 E: 6108477.08 | STA: 101+00.00 N: 1941238.17 E: 6108478.65 |

- SHEET KEYNOTES**
- REMOVE EXIST STORM DRAIN INLET AND PIPE
 - REMOVE EXIST TREE
 - REMOVE EXIST CURB AND GUTTER
 - REMOVE EXIST SIDEWALK
 - REMOVE WOODEN HEADER BOARD
 - RELOCATE ROADSIDE SIGN
 - PROTECT EXIST SIGN IN PLACE
 - PROTECT EXIST UTILITY IN PLACE
 - PROTECT EXIST PAVERS
 - RELOCATE FENCE, REPLACE FENCE POSTS IN KIND, SALVAGE AND REUSE FENCE PANELS AND HEADER/FOOTER BOARDS.
 - RELOCATE BOULDER (ON SITE)
 - CONSTRUCT A2-6 CURB AND GUTTER PER CITY OF CUPERTINO STANDARD DETAIL 1-16
 - CONSTRUCT SIDEWALK PER CITY OF CUPERTINO STANDARD DETAIL 1-19
 - CONSTRUCT CONCRETE VALLEY GUTTER PER CITY OF CUPERTINO STANDARD DETAIL 1-18
 - NOT USED
 - ADJUST MANHOLE TO GRADE
 - WATER METER RELOCATED BY OTHERS ADJUST BOX TO GRADE
 - CONSTRUCT THICKENED SIDEWALK DETAIL PER SHEET DT03. FOR DETAILS NOT SHOWN SEE CUPERTINO STD 1-19. DETAIL EXTENDS ALONG MCCELLELLAN RD FROM 101+27.18 TO 101+97.53.



| 06/29/2016 | ADDENDUM 1 | |
|------------|------------|-------------|
| NO | DATE | DESCRIPTION |
| | | |

PROJECT NO: 4844.00
CAD DWG FILE: 484400IP01.DWG

DESIGNED BY: LA
DRAWN BY: LA

CHECKED BY: JC
DATE: 06/29/2016

HMH

IMPROVEMENT PLAN

S:\PROJECTS\484400\IP01.PLOT.DRAWINGS\484400IP01.DWG

PLOTTED: 06/29/2016 5:36 PM



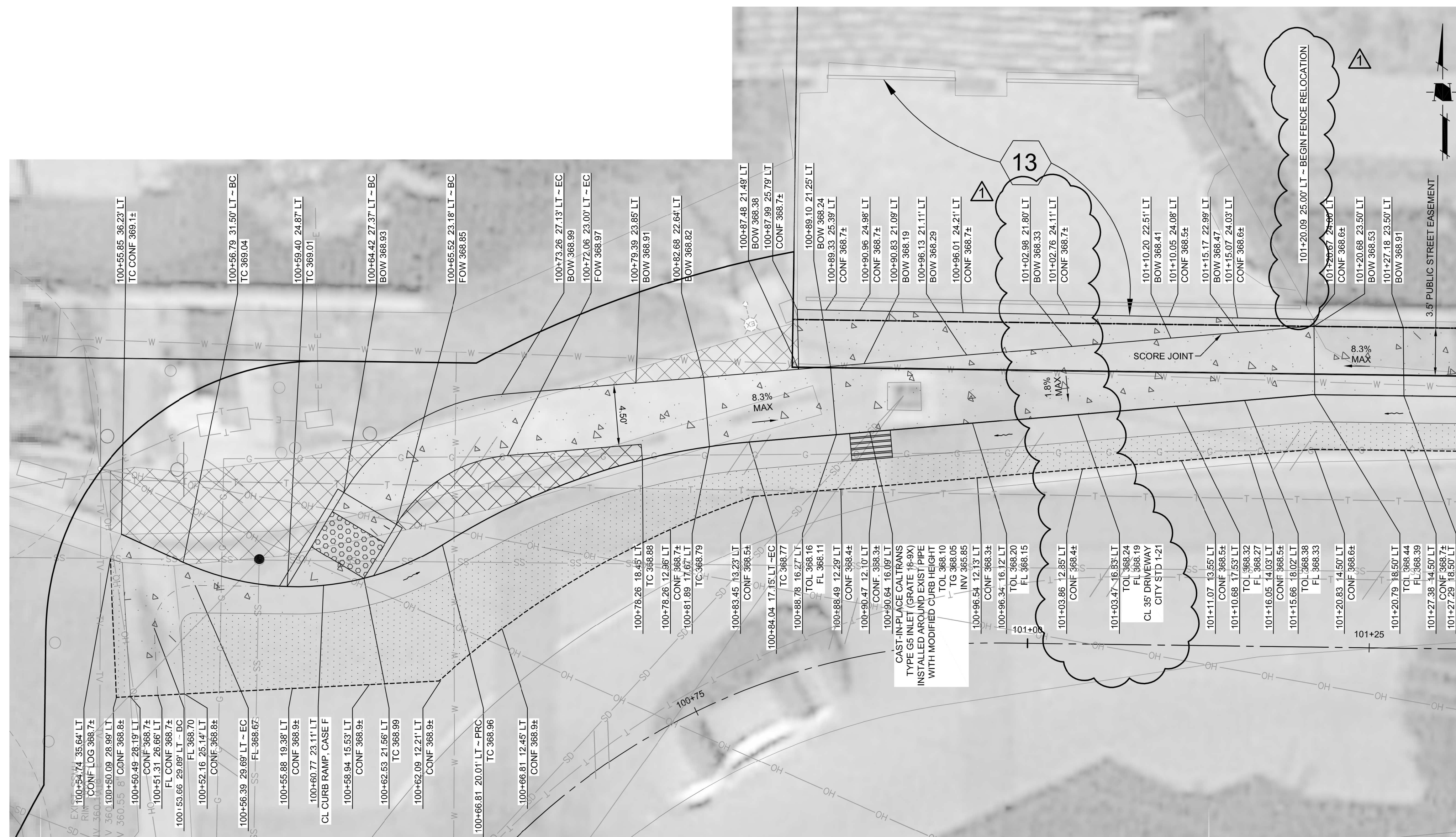
Land Use Entitlements
Land Planning
Landscape Architecture
Civil Engineering
Utility Design
Land Surveying
Stormwater Compliance

1570 Oakland Road (408) 487-2200
San Jose, CA 95131 HMHca.com



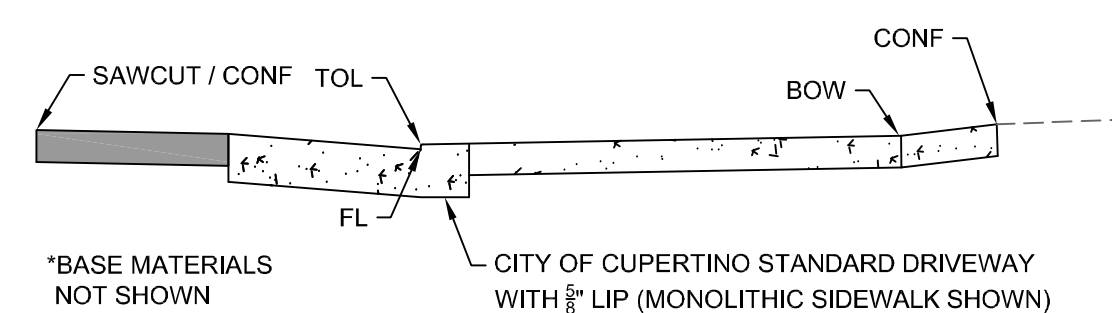
CUPERTINO

**CITY OF CUPERTINO
MCLELLAN ROAD
SIDEWALK CONSTRUCTION**
CUPERTINO, CALIFORNIA



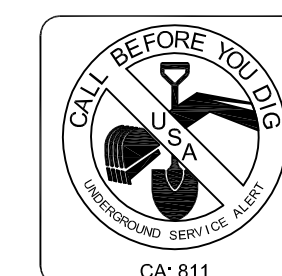
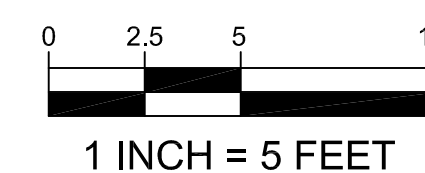
PLAN

SCALE: 1" = 5'



DRIVEWAY ANNOTATION LEGEND

NTS



SHEET KEYNOTES

- REMOVE EXIST STORM DRAIN INLET AND PIPE
- REMOVE EXIST TREE
- REMOVE EXIST CURB AND GUTTER
- REMOVE EXIST SIDEWALK
- REMOVE WOODEN HEADER BOARD
- RELOCATE ROADSIDE SIGN
- PROTECT EXIST SIGN IN PLACE
- PROTECT EXIST UTILITY IN PLACE
- PROTECT EXIST PAVEMENT
- RELOCATE FENCE. REPLACE FENCE POSTS IN KIND, SALVAGE AND REUSE FENCE PANELS AND HEADER/FOOTER BOARDS.
- RELOCATE BOULDER (ON SITE)
- CONSTRUCT A2-6 CURB AND GUTTER PER CITY OF CUPERTINO STANDARD DETAIL 1-16
- CONSTRUCT SIDEWALK PER CITY OF CUPERTINO STANDARD DETAIL 1-19
- CONSTRUCT CONCRETE VALLEY GUTTER PER CITY OF CUPERTINO STANDARD DETAIL 1-18
- NOT USED
- ADJUST MANHOLE TO GRADE
- WATER METER RELOCATED BY OTHERS ADJUST BOX TO GRADE
- CONSTRUCT THICKENED SIDEWALK DETAIL PER SHEET DT03. FOR DETAILS NOT SHOWN SEE CUPERTINO STD 1-19. DETAIL EXTENDS ALONG MCLELLAN RD FROM 101+27.18 TO 101+97.53.

| | | |
|----|------------|-------------|
| NO | DATE | DESCRIPTION |
| 1 | 06/29/2016 | ADDENDUM 1 |

PROJECT NO: 4844.00
CAD DWG FILE: 484400IP01.DWG

DESIGNED BY: LA
DRAWN BY: LA

CHECKED BY: JC
DATE: 06/29/2016

HMH

IMPROVEMENT PLAN

IP02

6 OF 7

S:\PROJECTS\484400\IP01.DWG

PLOTTED: 06/29/2016 5:37 PM