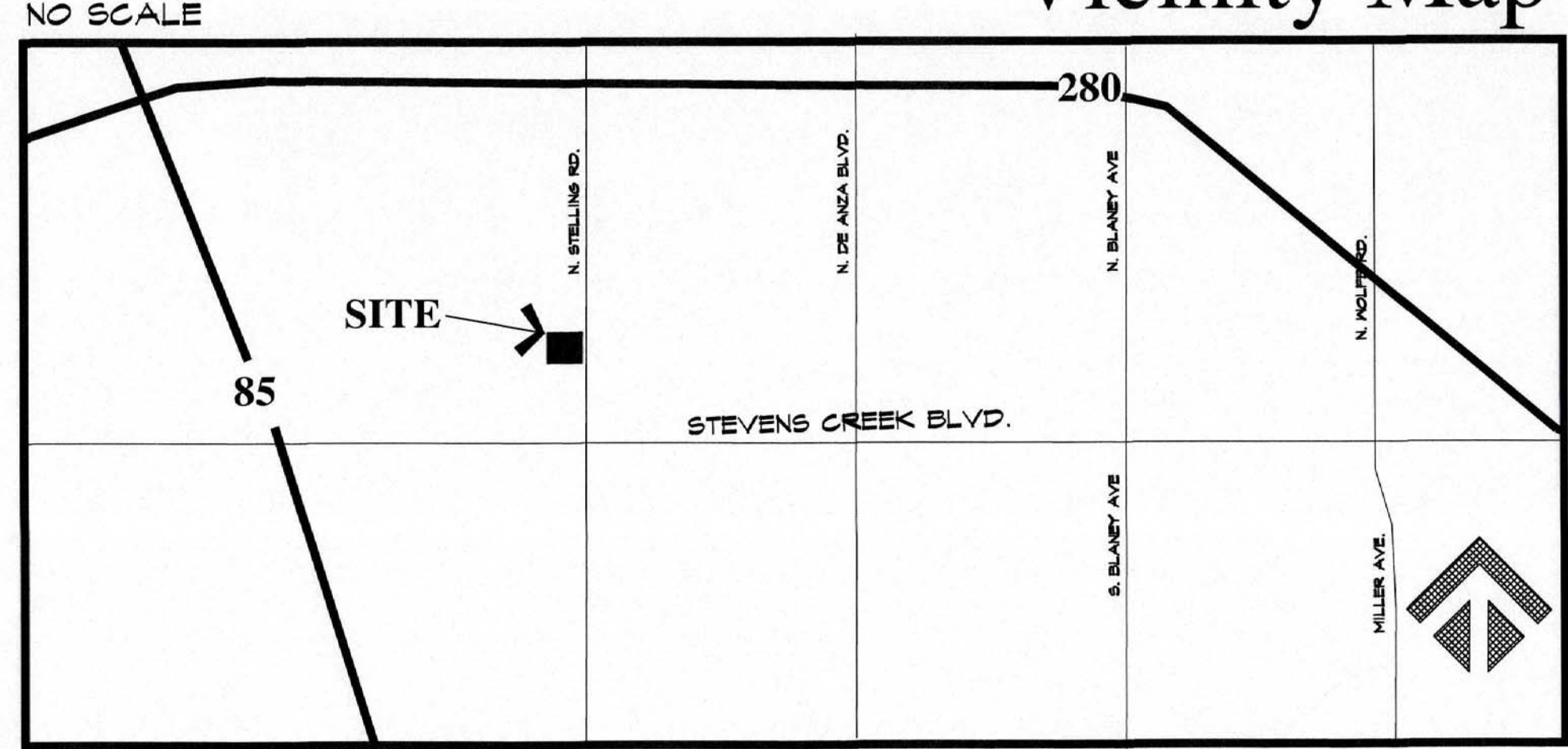


### Vicinity Map



### Project Description

**PROJECT ADDRESS**  
 QUINLAN COMMUNITY CENTER  
 10185 N. STELLING ROAD  
 CUPERTINO, CA

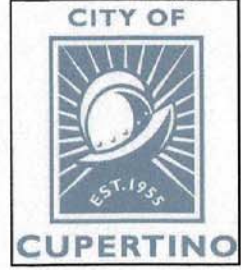
**SCOPE OF WORK - COMMUNITY CENTER**  
 UPGRADE THE EXISTING FIRE ALARM CONTROL PANEL WITH NEW HYBRID (CONVENTIONAL AND ADDRESSABLE) FIRE ALARM CONTROL PANEL.  
 EXISTING INITIATING DEVICES AND NOTIFICATION APPLIANCE DEVICES ARE TO BE RECONNECTED TO THE NEW FIRE ALARM CONTROL PANEL UTILIZING THE EXISTING FIELD WIRING.  
 TWO NEW SMOKE DETECTORS ARE TO BE ADDED TO THE FIRE ALARM SYSTEM. ONE SMOKE DETECTOR AT THE NEW FIRE ALARM CONTROL PANEL LOCATION AND THE SECOND DETECTOR AT THE DIGITAL ALARM COMMUNICATOR TRANSMITTER (DACT)

**APPLICABLE CODES**  
 2016 CALIFORNIA FIRE CODE (CFC)  
 2016 NFPA72 NATIONAL FIRE ALARM AND SIGNALING CODE

### Drawing Index

NO.	SHEET TITLE
E-1.0	TITLE SHEET, DRAWING INDEX, VICINITY MAP, PROJECT DESCRIPTION
E-1.1	FIRST FLOOR - FIRE ALARM PLAN - SHEET 1
E-1.2	FIRST FLOOR - FIRE ALARM PLAN - SHEET 2
E-2.1	ATTIC FLOOR - FIRE ALARM PLAN - SHEET 1
E-2.2	ATTIC FLOOR - FIRE ALARM PLAN - SHEET 2
E-3.0	FIRE ALARM RISER DIAGRAM
E-4.0	FIRE ALARM CONTROL PANEL INSTALLATION

## QUINLAN COMMUNITY CENTER 10185 N. STELLING ROAD CUPERTINO, CALIFORNIA FIRE ALARM CONTROL PANEL UPGRADE PROJECT NO. 2016-08



REVIEWED BY: *Alex Menas*  
 ALEX MENAS, AIA  
 PUBLIC WORKS PROJECT MANAGER  
 DATE: 11-1-2016

APPROVED BY: *Tim Borden*  
 TIMM BORDEN, RCE #45512  
 DIRECTOR OF PUBLIC WORKS  
 DATE: 11/1/16



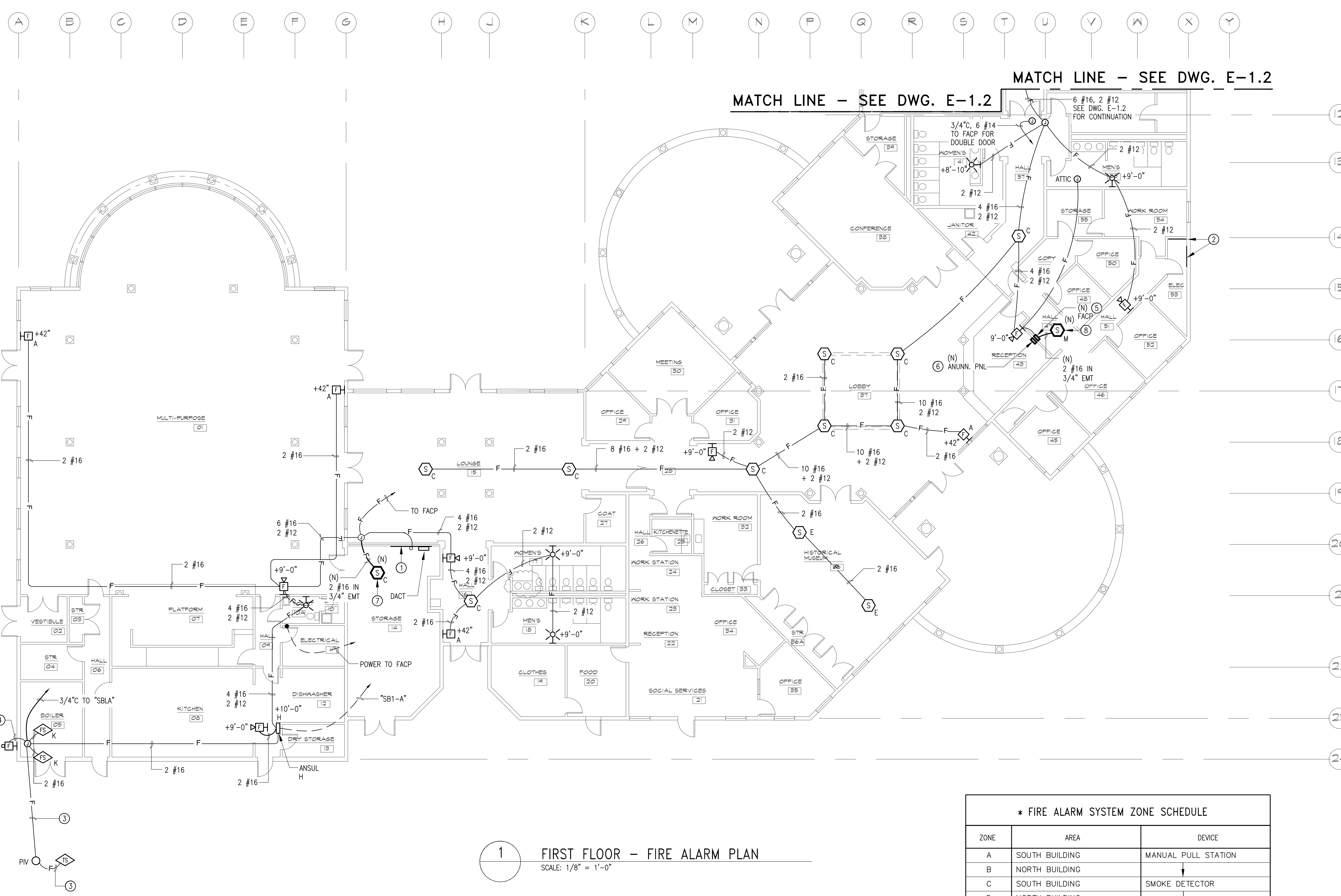
NO	DESCRIPTION	CHECKED	APPROVED	DATE
REVISIONS				

CLIENT	City Of Cupertino 10300 Torre Avenue Cupertino, CA 95014
DRAWN	VM
DATE	10/18/2016
ENGR	JH
CHECKED	JCH
APPROVED	

engineers, inc.  
 3350 Scott Blvd., bldg. 11  
 Santa Clara, CA 95054  
 (408) 986-8558

#### QUINLAN COMMUNITY CENTER FIRE ALARM CONTROL PANEL UPGRADE

TITLE SHEET DRAWING INDEX, VICINITY MAP, PROJECT DESCRIPTION	
PROJECT NO 16209-01	E-1.0
SCALE	DO NOT SCALE DRAWING
SHEET	1 OF 7



**GENERAL NOTES:**

- ALL FIRE ALARM DEVICES ARE EXISTING UNLESS INDICATED (N) OR NEW.

**SHEET NOTES:**

- EXISTING 8'-0" x 8'-0" x 3/4" THICK PLYWOOD SIGNAL BACKBOARD "SB1"  
T - TELEPHONE  
C - CABLE TV  
A - ALARM
- EXISTING 4'-0" x 8'-0" x 3/4" THICK PLYWOOD SIGNAL BACKBOARD "SB2"  
T - TELEPHONE  
C - CABLE TV  
A - ALARM
- 3/4" U/G TO PIV AND TAMPER SWITCH ALARM  
2 #12 (TAMPER SWITCH CKT. "K")
- 3/4" U/G TO SPRINKLER RISER BELL  
2 #12 + 1 #12 (G)
- REPLACE (E) FACP WITH (N) FACP. SEE DWG. E-4 FOR DETAIL.
- REPLACE (E) REMOTE ANNUNCIATOR WITH (N) REMOTE ANNUNCIATOR.  
REPAIR/PAINT WALL AS REQUIRED AFTER INSTALLATION OF REMOTE ANNUNCIATOR.
- PROVIDE (N) SMOKE DETECTOR ON CEILING. CONNECT TO (E) INITIATING DEVICE CIRCUIT. SEE DWG E-3.
- PROVIDE (N) SMOKE DETECTOR ON CEILING. CONNECT TO (N) INITIATING DEVICE CIRCUIT. SEE DWG E-3.

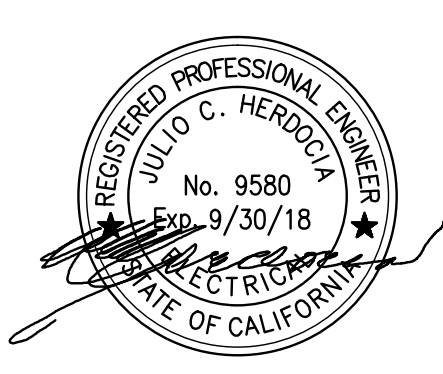
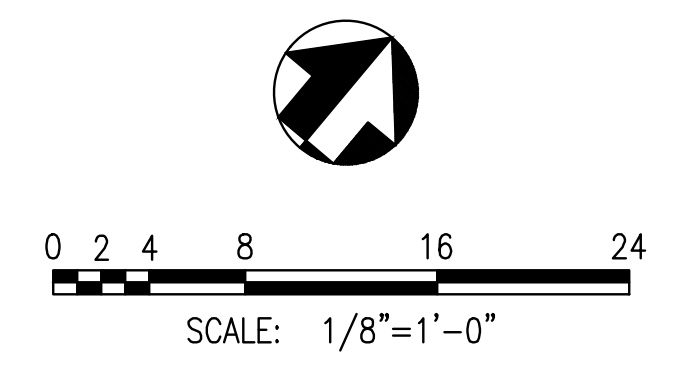
**LEGEND**

- FIRE ALARM DEVICES AND EQUIPMENT**
- [FACP] FIRE ALARM CONTROL PANEL
  - [FATC] FIRE ALARM TERMINAL CABINET
  - ≧ EOL END OF LINE RESISTOR
  - [AIM] # ADDRESSABLE INPUT MONITOR MODULE  
# INDICATES NUMBER OF INPUTS
  - [S.D.] SMOKE DETECTOR AND HEAT DETECTOR COMBINATION
  - [H.D.] HEAT DETECTOR
  - [S] SMOKE DETECTOR
  - [M.P.S.] MANUAL PULL STATION, +48" AFF
  - [F.S.] FLOW SWITCH
  - [T.S.] TAMPER SWITCH
  - [H.C.D.] COMBINATION HORN/STROBE, CANDELA AS INDICATED, +80" AFF
  - [S.C.D.] STROBE, CANDELA AS INDICATED, +80" AFF

* FIRE ALARM SYSTEM ZONE SCHEDULE		
ZONE	AREA	DEVICE
A	SOUTH BUILDING	MANUAL PULL STATION
B	NORTH BUILDING	↓
C	SOUTH BUILDING	SMOKE DETECTOR
D	NORTH BUILDING	↓
E	MUSEUM	↓
F	SOUTH ATTIC	↓
G	NORTH ATTIC	↓
H	KITCHEN	FIRE SUPPRESSION PANEL
I	SOUTH A/C UNITS	SMOKE DETECTOR
J	NORTH A/C UNITS	↓
K	SPRINKLER	FLOW SWITCH
** L	PRESCHOOL	SMOKE DETECTORS
M	FACP	SMOKE DETECTOR
N		↓

\* SYSTEM SHALL BE CLASS B WITH END-OF-LINE RESISTOR FOR EACH ZONE.  
 \*\* ZONE "L" SMOKE DETECTORS TO HAVE AUXILIARY CONTACTS FOR OPERATION OF (2) SMOKE DAMPERS

**1 FIRST FLOOR - FIRE ALARM PLAN**  
 SCALE: 1/8" = 1'-0"



NO.	DESCRIPTION	CHECKED	APPROVED	DATE	CLIENT	DRAWN	DATE
					City Of Cupertino 10300 Torre Avenue Cupertino, CA 95014	JH	10/18/2016
REVISIONS					APPROVED	JCH	

**MLH** engineers, inc. 3350 scott blvd., bldg. 11  
 santa clara, ca 95054  
 (408) 986-8558

QUINLAN COMMUNITY CENTER  
 FIRE ALARM CONTROL PANEL UPGRADE

**FIRST FLOOR - FIRE ALARM PLAN**  
**SHEET 1**

PROJECT NO 16209-01  
 SCALE 1/8" = 1'-0"  
 DO NOT SCALE DRAWING

**E-1.1** REV. NO.  
 SHEET 2 OF 7

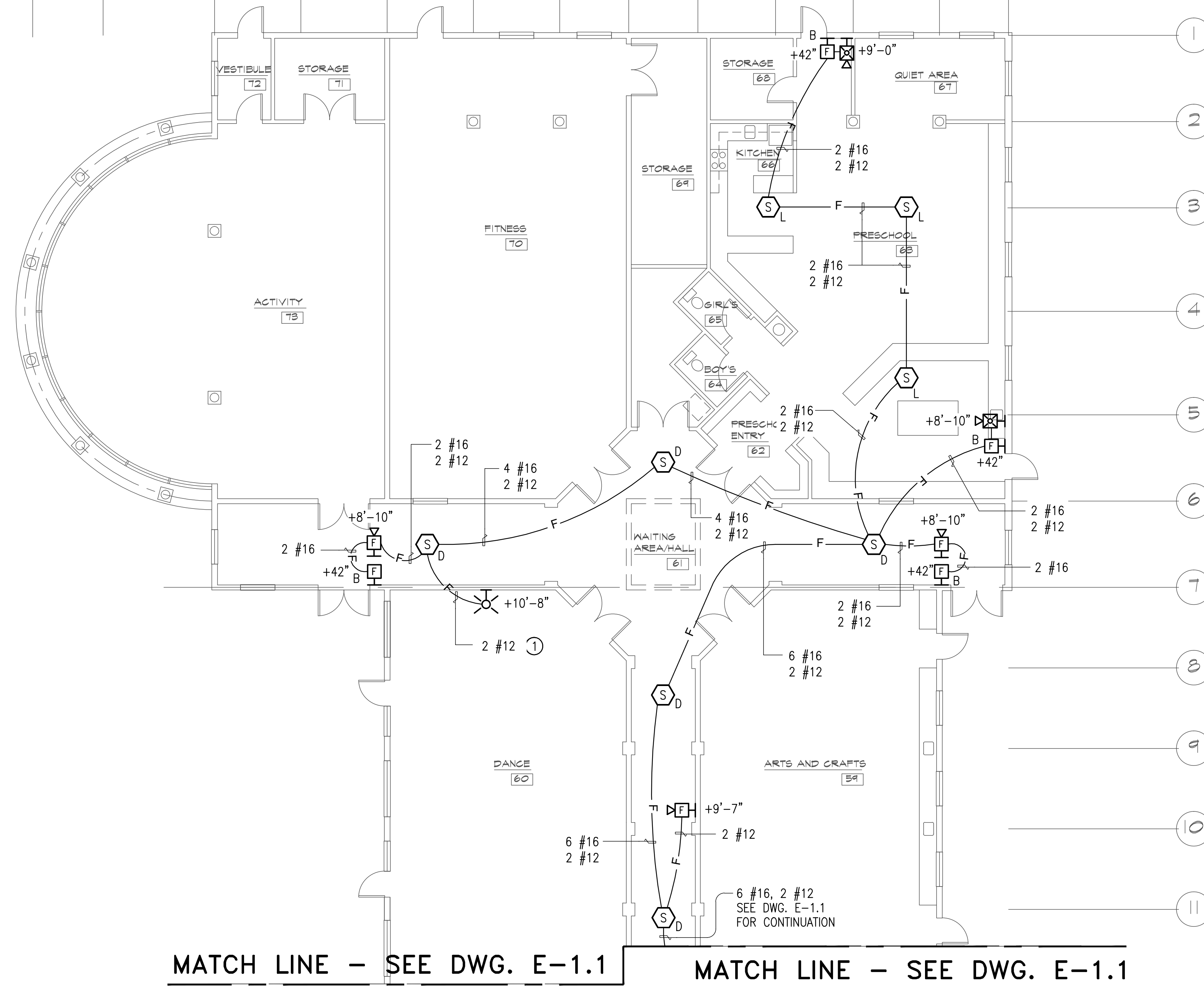
File: M:\16209-01\_Quinlan\_Cupertino\_Community\_Center\01E-1.1 and E-1.2.dwg, 10/19/2016 3:07 PM By: Vuong Mai, Plot scale: 1:1, Plot Size: ARCH full bleed E1 (30.00 x 42.00 inches)  
 Xrefs: xref1\_16209\_16209\_MLR\_title\_block.dwg

**GENERAL NOTES:**

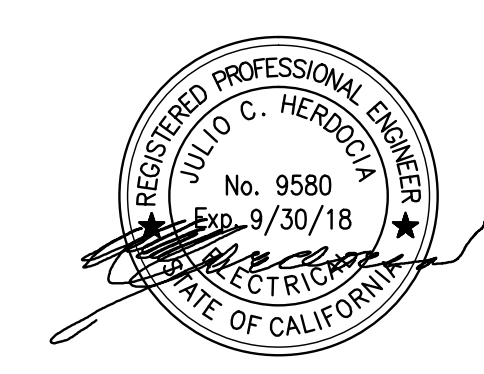
1. ALL FIRE ALARM DEVICES ARE EXISTING UNLESS INDICATED (N) OR NEW.

**SHEET NOTES:**

- 1 CONTRACTOR TO VERIFY THE CONNECTION OF THIS DEVICE.



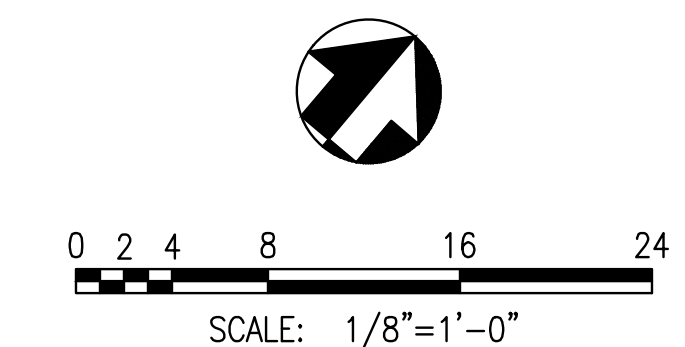
1 FIRST FLOOR – FIRE ALARM PLAN  
SCALE: 1/8" = 1'-0"



NO	DESCRIPTION	CHECKED	APPROVED	DATE
REVISIONS				

CLIENT  
City Of Cupertino  
10300 Torre Avenue  
Cupertino, CA 95014

DRAWN	DATE
VM	10/18/2016
ENGR	
JH	
CHECKED	
JCH	
APPROVED	

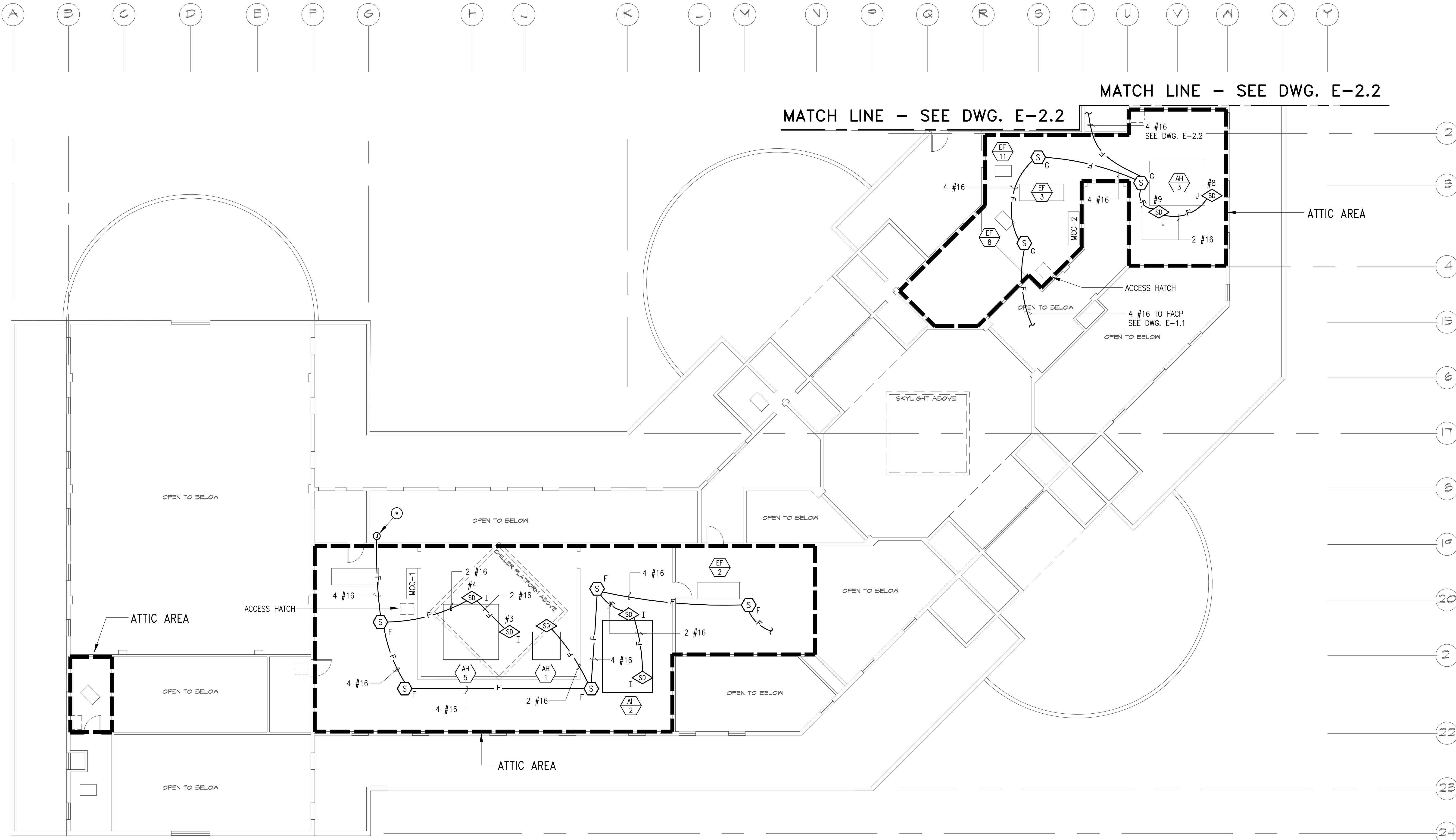


MLH engineers, inc.		3350 scott blvd., bldg. 11 san jose, ca 95054 (408) 986-8558	
QUINLAN COMMUNITY CENTER FIRE ALARM CONTROL PANEL UPGRADE			
FIRST FLOOR – FIRE ALARM PLAN SHEET 2			
PROJECT NO	16209-01	<b>E-1.2</b>	REV. NO.
SCALE	1/8" = 1'-0"	DO NOT SCALE DRAWING	SHEET 3 OF 7

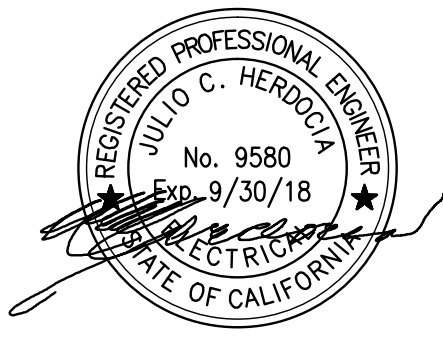
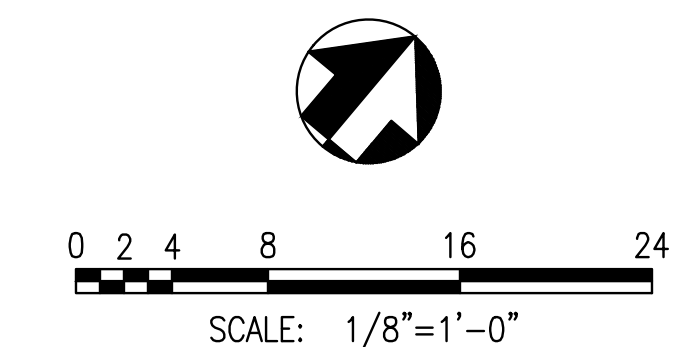
File: M:\16209-01\_Quinlan\_Cupertino\_Community\_Center\01E-1.1 and E-1.2.dwg, 10/19/2016 2:52 PM, Last saved: Vuong, Plot Date: 10/19/2016 3:08 PM, Plot Size: ARCH, Plot scale: 1:1, Plot Size: ARCH, full bleed E1 (30.00 x 42.00 inches)

**GENERAL NOTES:**

1. ALL FIRE ALARM DEVICES ARE EXISTING UNLESS INDICATED (N) OR NEW.



**1** ATTIC FLOOR – FIRE ALARM PLAN  
SCALE: 1/8" = 1'-0"



NO	DESCRIPTION	CHECKED	APPROVED	DATE
REVISIONS				

CLIENT  
City Of Cupertino  
10300 Torre Avenue  
Cupertino, CA 95014

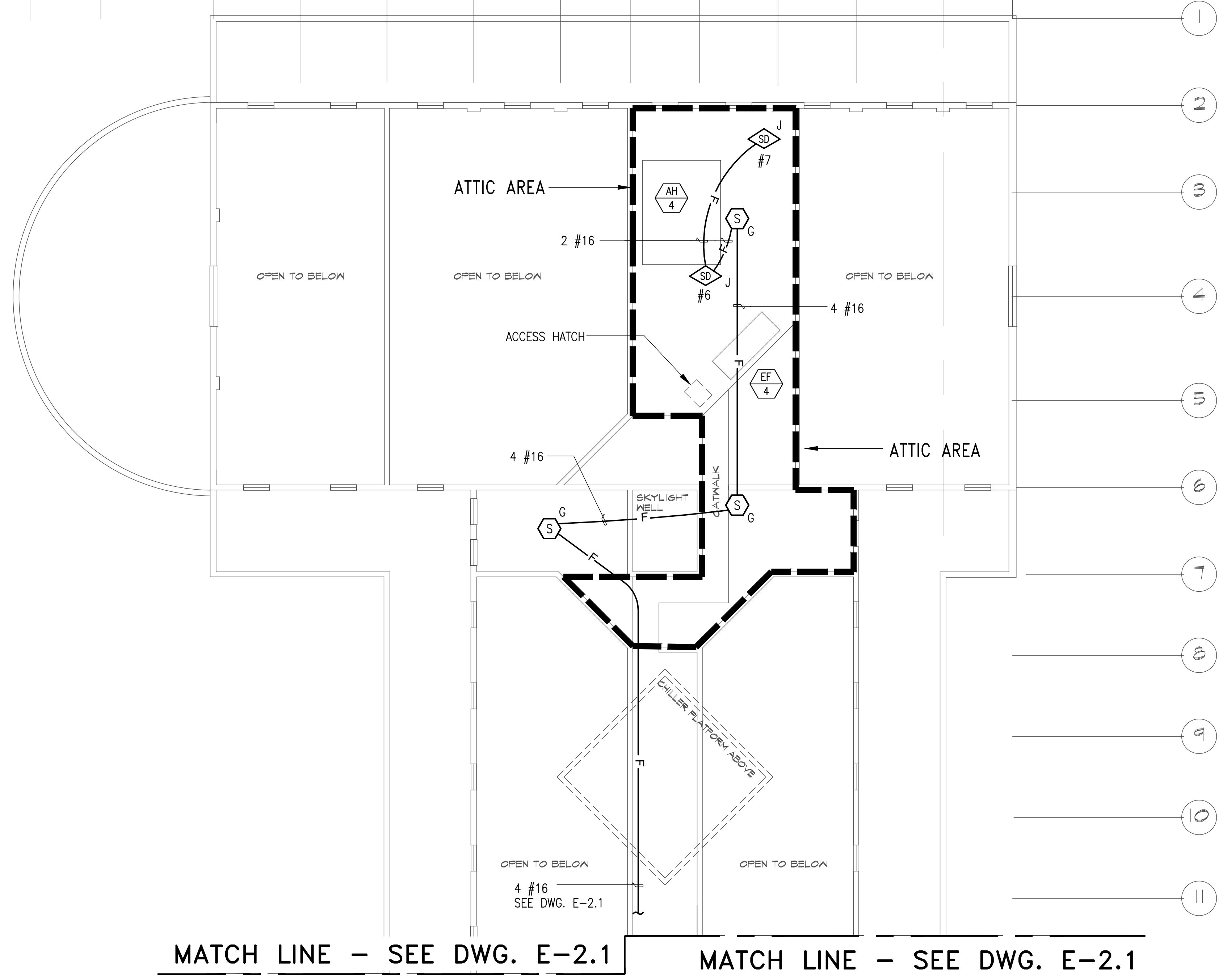
DRAWN	VM	DATE	10/18/2016
ENGR	JH		
CHECKED	JCH		
APPROVED			

engineers, inc. 3350 scott blvd., bldg. 11 santa clara, ca 95054 (408) 986-8558		
QUINLAN COMMUNITY CENTER FIRE ALARM CONTROL PANEL UPGRADE ATTIC FLOOR – FIRE ALARM PLAN SHEET 1		
PROJECT NO 16209-01	<b>E-2.1</b>	REV. NO.
SCALE 1/8" = 1'-0"	DO NOT SCALE DRAWING	SHEET 4 OF 7

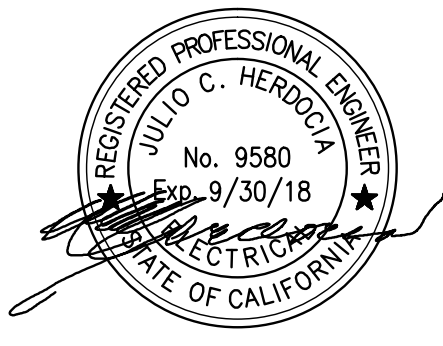
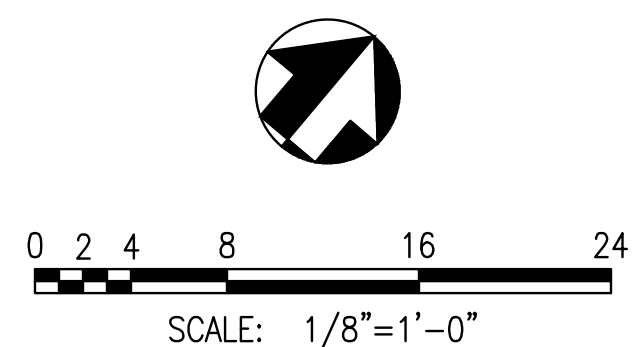
File: M:\16209-01\_Quinlan\_Cupertino\_Community\_Center\01E-2.1 and E-2.2.dwg, 10/19/2016 3:08 PM, Plot Date: 10/19/2016 3:08 PM, Plot Size: ARCH full bleed E1 (30.00 x 42.00 inches), Xref: splan\_1622\_MH\_title\_block.dwg

**GENERAL NOTES:**

1. ALL FIRE ALARM DEVICES ARE EXISTING UNLESS INDICATED (N) OR NEW.



1 ATTIC FLOOR – FIRE ALARM PLAN  
SCALE: 1/8" = 1'-0"



NO	DESCRIPTION	CHECKED	APPROVED	DATE
REVISIONS				

CLIENT  
City Of Cupertino  
10300 Torre Avenue  
Cupertino, CA 95014

APPROVED \_\_\_\_\_ DATE \_\_\_\_\_

DRAWN	DATE
ENGR	10/18/2016
CHECKED	
JCH	
APPROVED	

MLH engineers, inc.		3350 scott blvd., bldg. 11 santa clara, ca 95054 (408) 986-8558	
QUINLAN COMMUNITY CENTER FIRE ALARM CONTROL PANEL UPGRADE			
ATTIC FLOOR – FIRE ALARM PLAN SHEET 1			
PROJECT NO	16209-01	REV. NO.	E-2.2
SCALE	1/8" = 1'-0"	DO NOT SCALE DRAWING	SHEET 5 OF 7

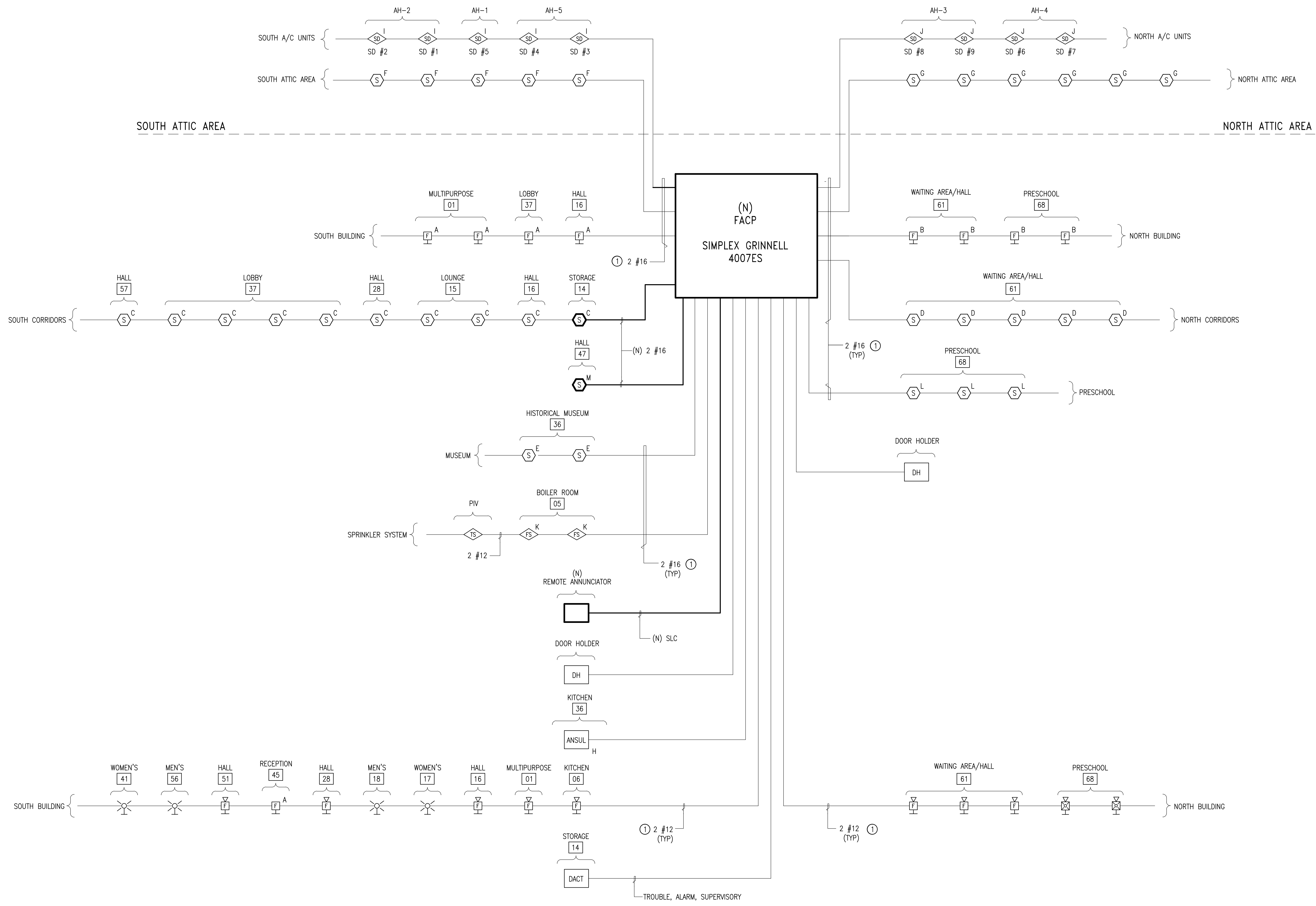
File: M:\16209-01\_Quinlan\_Cupertino\_Community\_Center\01E-2.1 and E-2.2.dwg, 10/19/2016 2:52 PM, Last saved: Vuong, Plot Date: 10/19/2016 3:08 PM, By: Vuong Mai, Plot scale: 1:1, Plot Size: ARCH full bleed E1 (30.00 x 42.00 inches), Xrefs: xrefs\_1622\_MH, title=Block\_box2

**GENERAL NOTES:**

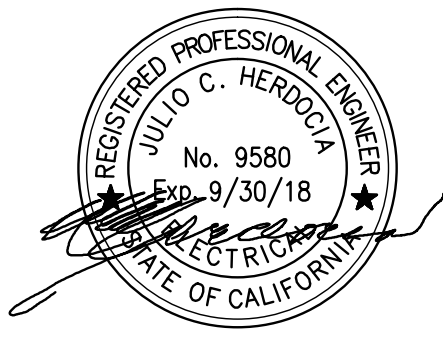
1. ALL FIRE ALARM DEVICES ARE EXISTING UNLESS INDICATED (N) OR NEW.
2. ALL (N) FIRE ALARM SYSTEM WIRING FOR (N) IDC DEVICES SHALL BE RUN CONCEALED IN CEILING SPACE AND SHALL BE IN 3/4" EMT CONDUIT.

**SHEET NOTES:**

1. VERIFY CIRCUIT SEQUENCE OF DEVICES AND PROVIDE AS-BUILT OF (E) INSTALLATION. PROVIDE LOCATION OF EOL DEVICE.



1 FACP BLOCK DIAGRAM  
NO SCALE



NO	DESCRIPTION	CHECKED	APPROVED	DATE
REVISIONS				

CLIENT		DRAWN	DATE
City Of Cupertino 10300 Torre Avenue Cupertino, CA 95014		VM	10/18/2016
APPROVED _____ DATE _____		ENGR	
		JH	
		CHECKED	
		JCH	
		APPROVED	

**MLH** engineers, inc. 3350 scott blvd., bldg. 11  
santa clara, ca 95054  
(408) 986-8558

QUINLAN COMMUNITY CENTER  
FIRE ALARM CONTROL PANEL UPGRADE

**FIRE ALARM RISER DIAGRAM**

PROJECT NO 16209-01 **E-3.0** REV. NO.

SCALE NONE DO NOT SCALE DRAWING SHEET 6 OF 7

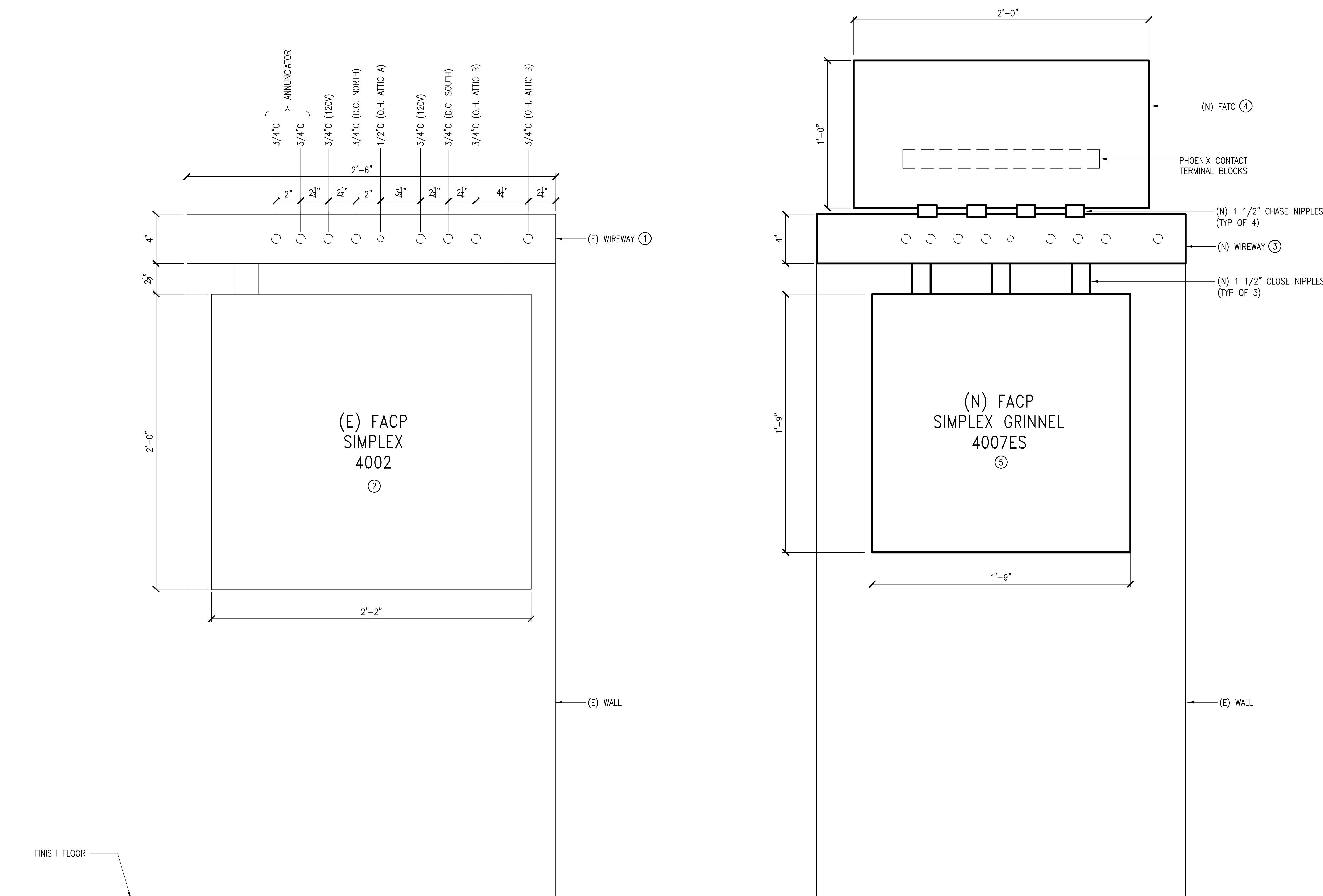
File: M:\16209-01\_Quinlan\_Cupertino\_Community\_Center\01E-3.0.dwg, 10/19/2016 2:49 PM, Last saved: Vuong, Plot Date: 10/19/2016 3:09 PM, Plot Scale: 1:1, Plot Size: ARCH full bleed E1 (30.00 x 42.00 inches), Xrefs: M:\16209-01\_Quinlan\_Cupertino\_Community\_Center\01E-3.0.dwg, 10/19/2016 2:49 PM, Last saved: Vuong, Plot Date: 10/19/2016 3:09 PM, Plot Scale: 1:1, Plot Size: ARCH full bleed E1 (30.00 x 42.00 inches)

**GENERAL NOTES:**

- ALL FIRE ALARM DEVICES ARE EXISTING UNLESS INDICATED (N) OR NEW.

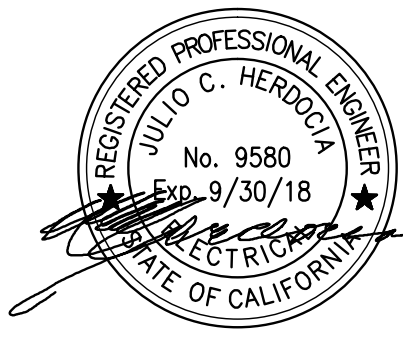
**SHEET NOTES:**

- REMOVE (E) WIREWAY. EXERCISE CARE TO NOT TO DAMAGE (E) FACP CONDUCTORS.
- REMOVE (E) FACP. IDENTIFY ALL FACP CONDUCTORS WITH THEIR CIRCUIT FUNCTION PRIOR TO REMOVAL.
- PROVIDE (N) 4" x 4" x 30"L WIREWAY WITH HINGED COVER AND NO KNOCKOUT. RE-TERMINATE (E) CONDUITS ON THE BACK OF WIREWAY. PROVIDE (N) CLOSE NIPPLES AND CHASE NIPPLES AS INDICATED.
- PROVIDE (N) NEMA TYPE 12 BOX, 12" x 24" x 8"D WITH HINGED COVER, WITH SCREW DOWN CLAMPS AND PADLOCKING HASP AND STAPLE. BOX SHALL BE "HOFFMAN" CAT. A122440LP WITH PANEL A1224. PROVIDE PHOENIX CONTACT TERMINAL BLOCKS WITH SUFFICIENT NUMBER TO TERMINATE EXISTING FIELD WIRES PLUS 20 SPARE POINTS. PROVIDE (N) #14 AWG WIRES FROM TERMINAL BLOCK TO THE (N) FACP IDC ZONES AND SUPERVISING, TROUBLE AND ALARM SIGNALS TO DACT. PROVIDE #12 AWG FOR NAC CIRCUITS, DOOR CONTACTS, AND FOR 120VAC POWER SUPPLY.
- PROVIDE (N) FACP AND REMOTE ANNUNCIATOR WITH THE REQUIRED NUMBER OF ZONES AND RELAY MODULES TO MEET REQUIREMENTS OF (E) FIRE ALARM SYSTEM WITH ADDITIONAL SPARE ZONES/RELAY MODULES PER FACP SPECIFICATION. PROVIDE 24VDC POWER TO REMOTE ANNUNCIATOR AND SLC COMMUNICATION LINE PER FACP MANUFACTURER REQUIREMENTS



1 (E) FACP DEMOLITION WORK  
SCALE: 3" = 1'-0"

2 (N) FACP REPLACEMENT INSTALLATION  
SCALE: 3" = 1'-0"



NO	DESCRIPTION	CHECKED	APPROVED	DATE
REVISIONS				

CLIENT	City Of Cupertino 10300 Torre Avenue Cupertino, CA 95014
APPROVED	DATE

DRAWN	DATE
ENGR	10/18/2016
CHECKED	
JCH	
APPROVED	

**MH** engineers, inc. 3350 scott blvd., bldg. 11  
santa clara, ca 95054  
(408) 986-8558

QUINLAN COMMUNITY CENTER  
FIRE ALARM CONTROL PANEL UPGRADE

**FACP INSTALLATION  
DETAILS**

PROJECT NO 16209-01 **E-4.0** REV. NO.

SCALE NONE DO NOT SCALE DRAWING SHEET 7 OF 7

File: M:\16209-01\_Quinlan\_Cupertino\_Community\_Center\01E-4.0.dwg, 10/19/2016 2:49 PM, Last saved: Vuong, Plot Date: 10/19/2016 3:09 PM, Plot Scale: ARCH full bleed E1 (30.00 x 42.00 inches)