

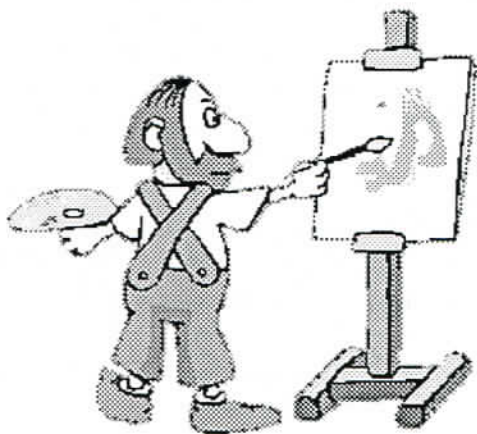


Share Discovery Through Travel

Monet and Bouquets

Legion of Honor
and
deYoung Museum
Thursday, March 16
7:30am-4pm

Join us for this chance to explore two of San Francisco's finest art museums as we experience *Monet* and *Bouquets*.



Monet: The Early Years will be the first major U.S. exhibition devoted to the initial phase of Claude Monet's career. Join us for a docent-led tour of this once-in-a-lifetime opportunity to experience Monet's mastery before impressionism, including paintings that are profoundly daring and surprising.

Turn the page for more details about this delightful excursion!



CUPERTINO

City of Cupertino
Recreation and Community Services Department
Creating a Positive, Healthy, and Connected Community

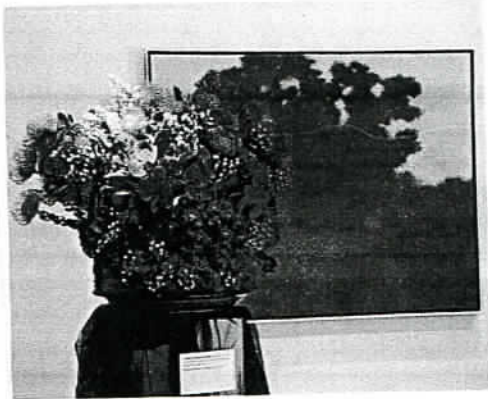
Monet and Bouquets

Legion of Honor and deYoung Museum
Thursday, March 16, 7:30am-4pm

With a selection of works gathered from some of the most important international collections - the Musée d'Orsay in Paris, the National Gallery of Art in Washington D.C., the Metropolitan Museum of Art in New York and other public and private collections worldwide - *Monet: The Early Years*

authoritatively demonstrates the artist's early command of many genres, not only the landscapes for which he has become so renowned. but also still lifes, portraits, and other scenes. Join us for the chance to explore these remarkable early works at the Legion of Honor.

After *Monet*, it's on to the *Bouquets*



Whispers of subtle charm, gasps of beauty--art is in lively conversation with nature during *Bouquets to Art*. The most in-demand floral designers from the Bay Area and beyond, draw inspiration from the art in the deYoung's collection to create arrangements from the strikingly simple to the elaborately intricate. Wander galleries awash with colorful flowers during this highly anticipated event, only on view for one week per year!

For lunch, enjoy time for a no-host delicious meal or snack at the deYoung Café, with a view of the Barbaro Osher Sculpture Garden, offering soups, sandwiches, and hot entrées.

ACTIVITY LEVEL: Moderate; walking at your own pace, long periods of standing

COST:
\$109

TRIP INCLUDES: Museum and Special Exhibit Admissions, Docent-Guided Tour, Transportation, Tips and Travel Staff

Itinerary is subject to change.

Please plan to meet at the Cupertino Senior Center 30 minutes prior to departure time.

Cupertino Senior Center
21251 Stevens Creek Blvd. Cupertino, CA 95014
Phone: (408) 777-3150 Fax: (408) 777-3156
www.cupertino.org/senior

Monet.trp 12/10/16