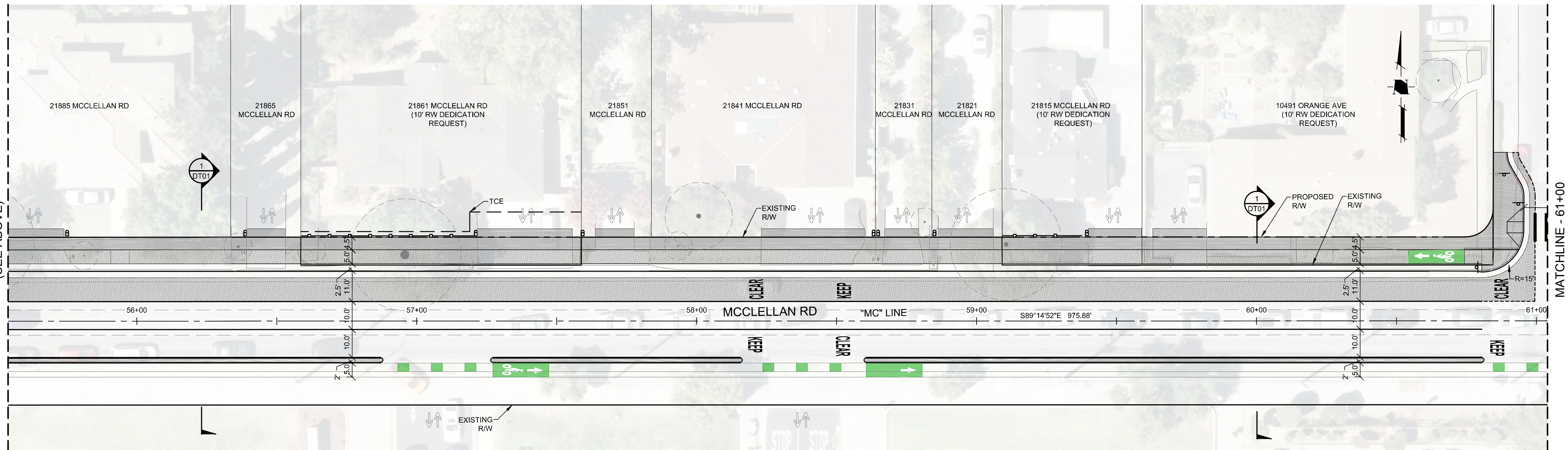
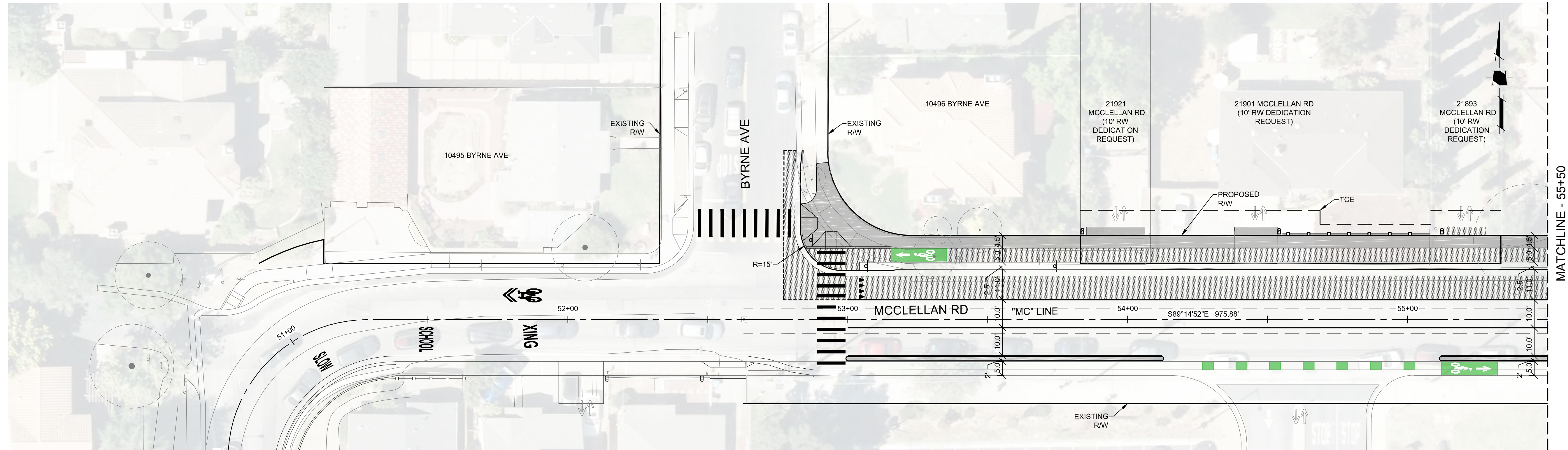


**GENERAL SHEET NOTES**

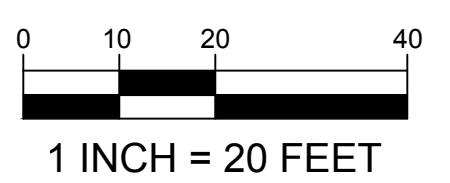
- TOP OF CURB ELEVATIONS AT DRIVEWAYS AND OTHER DEPRESSED AREAS REPRESENT THEORETICAL FULL HEIGHT CURB ELEVATION. DEPRESSED CURB SECTIONS AT DRIVEWAYS SHALL BE CONSTRUCTED 0.45' BELOW ELEVATION SHOWN PER CITY STANDARD DETAIL.

**SHEET KEYNOTES**

- REMOVE EXIST AC DIKE/CURB AND GUTTER
- REMOVE EXIST CONCRETE SIDEWALK/ DRIVEWAY/ WALKWAY
- REMOVE EXIST ASPHALT CONCRETE DRIVEWAY/ WALKWAY
- REMOVE EXIST FENCE
- REMOVE EXIST PRIVATE ENHANCEMENT
- REMOVE EXIST STORM DRAIN INLET AND PIPE
- REMOVE EXIST ROADSIDE SIGN
- REMOVE PAVER
- REMOVE MIDWEST GUARDRAIL SYSTEM
- REMOVE TRAFFIC ISLAND
- ABANDON EXIST SDI
- REMOVE ADA RAMP
- REMOVE BOLLARD
- PROTECT EXIST UTILITY IN PLACE
- PROTECT EXIST MAILBOX IN PLACE
- PROTECT EXIST TREE IN PLACE
- PROTECT EXIST FENCE AND POSTS IN PLACE
- PROTECT EXIST PRIVATE ENHANCEMENT IN PLACE
- PROTECT EXIST ROADSIDE SIGN IN PLACE
- ADJUST UTILITY TO GRADE
- RELOCATE EXIST FENCE
- RELOCATE EXIST MAILBOX
- RELOCATE UTILITY POLE AND GUY WIRES (WBO)
- RELOCATE EXIST ROADSIDE SIGN
- RELOCATE UTILITY (WBO)
- RELOCATE UPRR GATE
- RELOCATE BOLLARD
- CONSTRUCT A1-6 CURB AND GUTTER PER CITY OF CUPERTINO STANDARD DETAIL 1-16
- CONSTRUCT A2-6 CURB AND GUTTER PER CITY OF CUPERTINO STANDARD DETAIL 1-16
- CONSTRUCT SIDEWALK PER CITY OF CUPERTINO STANDARD DETAIL 1-19
- INSTALL PRECAST CURB
- CONSTRUCT SIDEWALK LEVEL BICYCLE LANE
- CONSTRUCT MIDWEST GUARDRAIL SYSTEM
- CONSTRUCT BICYCLE LANE RAMP
- CONSTRUCT MEDIAN ISLAND
- CONNECT TO EXIST RCP WITH CONCRETE COLLAR (SEE SHEET DT04)
- CONSTRUCT BUS PAD
- CONSTRUCT CONCRETE VALLEY GUTTER



CONTRACTOR AGREES THAT HE SHALL ASSUME SOLE AND COMPLETE RESPONSIBILITY FOR JOB SITE CONDITIONS DURING THE COURSE OF CONSTRUCTION OF THIS PROJECT, INCLUDING THE SAFETY OF ALL PERSONS AND PROPERTY THAT ARE IN CONTACT WITH THE PROJECT. THE CONTRACTOR SHALL BE RESPONSIBLE FOR OBTAINING ALL NECESSARY PERMITS AND APPROVALS FROM THE CITY OF CUPERTINO AND THE STATE OF CALIFORNIA. THE CONTRACTOR SHALL BE RESPONSIBLE FOR OBTAINING ALL NECESSARY PERMITS AND APPROVALS FROM THE CITY OF CUPERTINO AND THE STATE OF CALIFORNIA. THE CONTRACTOR SHALL BE RESPONSIBLE FOR OBTAINING ALL NECESSARY PERMITS AND APPROVALS FROM THE CITY OF CUPERTINO AND THE STATE OF CALIFORNIA.



**HMM**  
 Land Use Entitlements  
 Land Planning  
 Landscape Architecture  
 Civil Engineering  
 Utility Design  
 Land Surveying  
 Stormwater Compliance

1570 Oakland Road  
 San Jose, CA 95131  
 (408) 487-2200  
 HMM.ca

Date:	December 1, 2017
Scale:	1" = 20'
Designed:	AN
Drawn:	AN
Checked:	JC
Proj. Engr:	JC

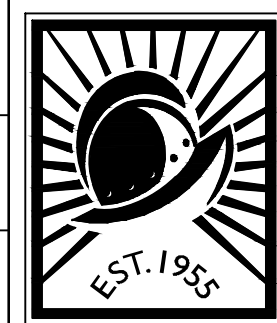
NO.	REVISIONS	DESIGN BY	DESIGN DATE	CITY APPR.	APPR. DATE



IMPROVEMENT PLANS FOR  
**McCLELLAN ROAD  
 SEPARATED BIKEWAYS**

CUPERTINO CALIFORNIA

FOR CITY OF CUPERTINO USE  
 PROJECT # \_\_\_\_\_  
 PUBLIC WORKS INSPECTOR:  
 VOICE MAIL:  
 PROJECT ENGINEER  
 NAME \_\_\_\_\_ DATE \_\_\_\_\_



**GENERAL SHEET NOTES**

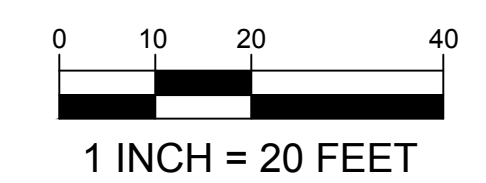
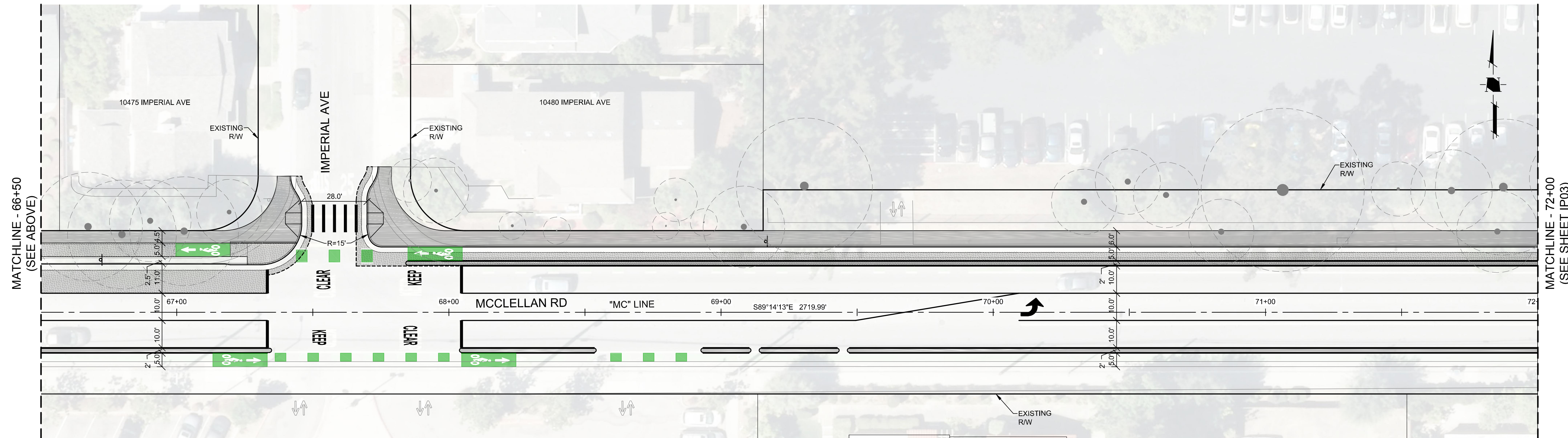
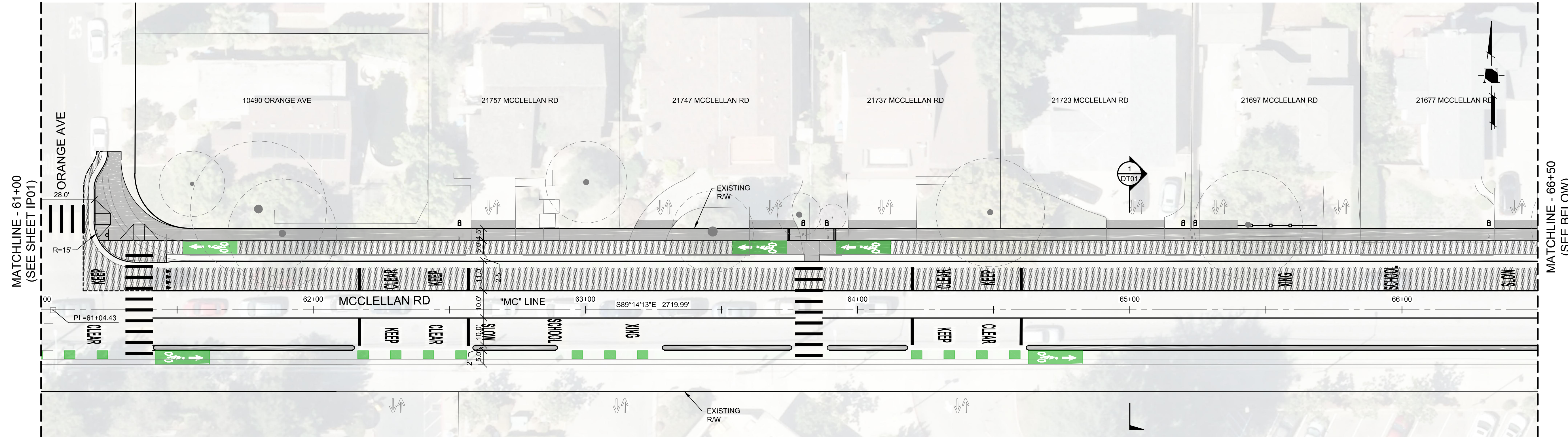
- TOP OF CURB ELEVATIONS AT DRIVEWAYS AND OTHER DEPRESSED AREAS REPRESENT THEORETICAL FULL HEIGHT CURB ELEVATION. DEPRESSED CURB SECTIONS AT DRIVEWAYS SHALL BE CONSTRUCTED 0.45' BELOW ELEVATION SHOWN PER CITY STANDARD DETAIL.

**SHEET KEYNOTES**

- REMOVE EXIST AC DIKE/CURB AND GUTTER
- REMOVE EXIST CONCRETE SIDEWALK/ DRIVEWAY/ WALKWAY
- REMOVE EXIST ASPHALT CONCRETE DRIVEWAY/ WALKWAY
- REMOVE EXIST FENCE
- REMOVE EXIST PRIVATE ENHANCEMENT
- REMOVE EXIST STORM DRAIN INLET AND PIPE
- REMOVE EXIST ROADSIDE SIGN
- REMOVE PAVER
- REMOVE MIDWEST GUARDRAIL SYSTEM
- REMOVE TRAFFIC ISLAND
- ABANDON EXIST SDI
- REMOVE ADA RAMP
- REMOVE BOLLARD
- PROTECT EXIST UTILITY IN PLACE
- PROTECT EXIST MAILBOX IN PLACE
- PROTECT EXIST TREE IN PLACE
- PROTECT EXIST FENCE AND POSTS IN PLACE
- PROTECT EXIST PRIVATE ENHANCEMENT IN PLACE
- PROTECT EXIST ROADSIDE SIGN IN PLACE
- ADJUST UTILITY TO GRADE
- RELOCATE EXIST FENCE
- RELOCATE EXIST MAILBOX
- RELOCATE UTILITY POLE AND GUY WIRES (WBO)
- RELOCATE EXIST ROADSIDE SIGN
- RELOCATE UTILITY (WBO)
- RELOCATE UPRR GATE
- RELOCATE BOLLARD
- CONSTRUCT A1-6 CURB AND GUTTER PER CITY OF CUPERTINO STANDARD DETAIL 1-16
- CONSTRUCT A2-6 CURB AND GUTTER PER CITY OF CUPERTINO STANDARD DETAIL 1-16
- CONSTRUCT SIDEWALK PER CITY OF CUPERTINO STANDARD DETAIL 1-19
- INSTALL PRECAST CURB
- CONSTRUCT SIDEWALK LEVEL BICYCLE LANE
- CONSTRUCT MIDWEST GUARDRAIL SYSTEM
- CONSTRUCT BICYCLE LANE RAMP
- CONSTRUCT MEDIAN ISLAND
- CONNECT TO EXIST RCP WITH CONCRETE COLLAR (SEE SHEET DT04)
- CONSTRUCT BUS PAD
- CONSTRUCT CONCRETE VALLEY GUTTER

CONTRACTOR AGREES THAT HE SHALL ASSUME SOLE AND COMPLETE RESPONSIBILITY FOR JOB SITE CONDITIONS DURING THE COURSE OF CONSTRUCTION OF THIS PROJECT, INCLUDING THE SAFETY OF ALL PERSONS AND PROPERTY AND THAT HIS WORK SHALL BE CONTINUOUSLY AND NOT BE LIMITED TO NORMAL WORKING HOURS, AND THAT THE CONTRACTOR SHALL BE RESPONSIBLE FOR OBTAINING ALL NECESSARY PERMITS AND APPROVALS FROM THE CITY OF CUPERTINO AND THE STATE OF CALIFORNIA, AND THAT THE CONTRACTOR SHALL BE RESPONSIBLE FOR OBTAINING ALL NECESSARY PERMITS AND APPROVALS FROM THE CITY OF CUPERTINO AND THE STATE OF CALIFORNIA, AND THAT THE CONTRACTOR SHALL BE RESPONSIBLE FOR OBTAINING ALL NECESSARY PERMITS AND APPROVALS FROM THE CITY OF CUPERTINO AND THE STATE OF CALIFORNIA.

S:\PROJECTS\468200\468200 - MCCLELLAN CYCLE TRACKS\DWG\LOT DRAWINGS\468200R01.DWG

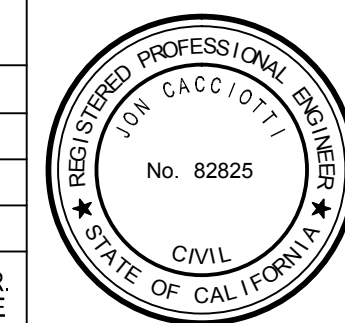


**HMM**  
 Land Use Entitlements  
 Land Planning  
 Landscape Architecture  
 Civil Engineering  
 Utility Design  
 Land Surveying  
 Stormwater Compliance

1570 Oakland Road  
 San Jose, CA 95131

(408) 487-2200  
 HMM.ca.com

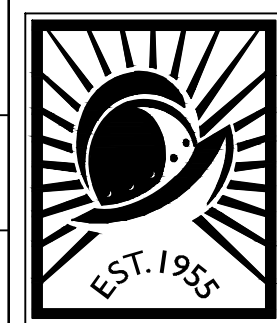
Date:	December 1, 2017				
Scale:	1" = 20'				
Designed:	AN				
Drawn:	AN				
Checked:	JC				
Proj. Engr:	JC				
File:					



IMPROVEMENT PLANS FOR  
**MCCLELLAN ROAD  
 SEPARATED BIKEWAYS**

CUPERTINO CALIFORNIA

FOR CITY OF CUPERTINO USE  
 PROJECT # \_\_\_\_\_  
 PUBLIC WORKS INSPECTOR:  
 VOICE MAIL:  
 PROJECT ENGINEER  
 NAME \_\_\_\_\_ DATE \_\_\_\_\_



**CITY OF CUPERTINO**  
 IP02  
 SHEET 6 OF 23



**GENERAL SHEET NOTES**

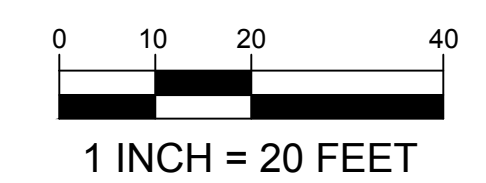
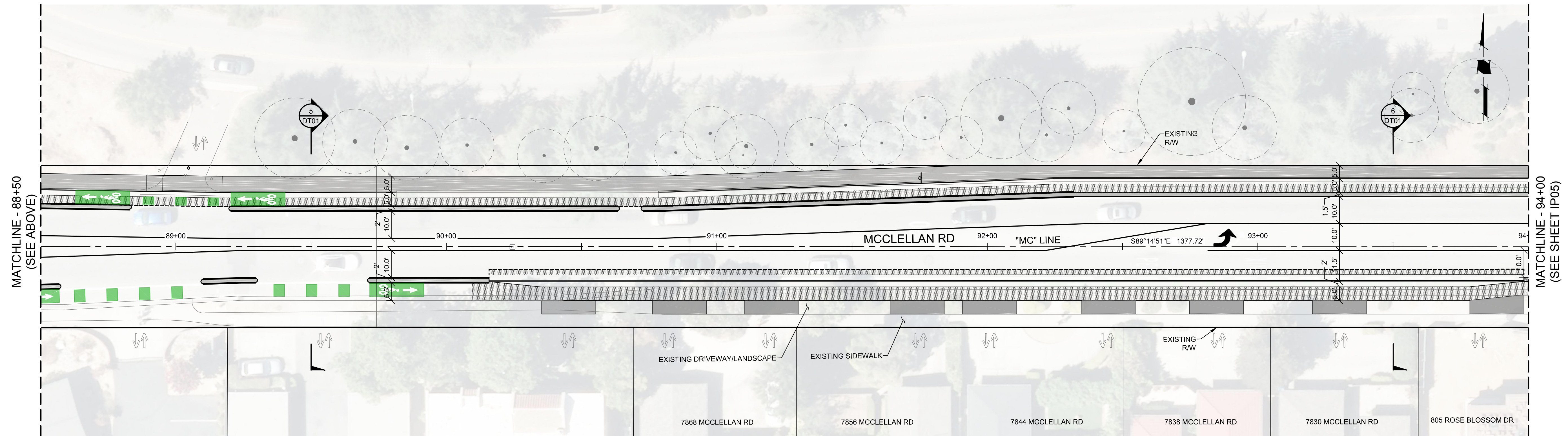
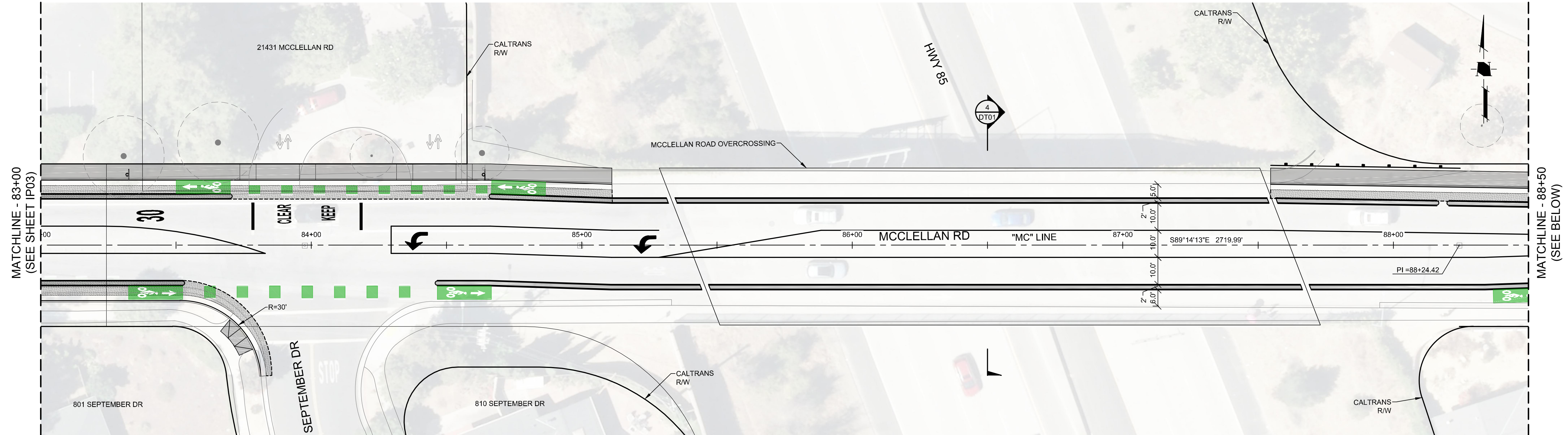
- TOP OF CURB ELEVATIONS AT DRIVEWAYS AND OTHER DEPRESSED AREAS REPRESENT THEORETICAL FULL HEIGHT CURB ELEVATION. DEPRESSED CURB SECTIONS AT DRIVEWAYS SHALL BE CONSTRUCTED 0.45' BELOW ELEVATION SHOWN PER CITY STANDARD DETAIL.

**SHEET KEYNOTES**

- REMOVE EXIST AC DIKE/CURB AND GUTTER
- REMOVE EXIST CONCRETE SIDEWALK/ DRIVEWAY/ WALKWAY
- REMOVE EXIST ASPHALT CONCRETE DRIVEWAY/ WALKWAY
- REMOVE EXIST FENCE
- REMOVE EXIST PRIVATE ENHANCEMENT
- REMOVE EXIST STORM DRAIN INLET AND PIPE
- REMOVE EXIST ROADSIDE SIGN
- REMOVE PAVER
- REMOVE MIDWEST GUARDRAIL SYSTEM
- REMOVE TRAFFIC ISLAND
- ABANDON EXIST SDI
- REMOVE ADA RAMP
- REMOVE BOLLARD
- PROTECT EXIST UTILITY IN PLACE
- PROTECT EXIST MAILBOX IN PLACE
- PROTECT EXIST TREE IN PLACE
- PROTECT EXIST FENCE AND POSTS IN PLACE
- PROTECT EXIST PRIVATE ENHANCEMENT IN PLACE
- PROTECT EXIST ROADSIDE SIGN IN PLACE
- ADJUST UTILITY TO GRADE
- RELOCATE EXIST FENCE
- RELOCATE EXIST MAILBOX
- RELOCATE UTILITY POLE AND GUY WIRES (WBO)
- RELOCATE EXIST ROADSIDE SIGN
- RELOCATE UTILITY (WBO)
- RELOCATE UPRR GATE
- RELOCATE BOLLARD
- CONSTRUCT A1-6 CURB AND GUTTER PER CITY OF CUPERTINO STANDARD DETAIL 1-16
- CONSTRUCT A2-6 CURB AND GUTTER PER CITY OF CUPERTINO STANDARD DETAIL 1-16
- CONSTRUCT SIDEWALK PER CITY OF CUPERTINO STANDARD DETAIL 1-19
- INSTALL PRECAST CURB
- CONSTRUCT SIDEWALK LEVEL BICYCLE LANE
- CONSTRUCT MIDWEST GUARDRAIL SYSTEM
- CONSTRUCT BICYCLE LANE RAMP
- CONSTRUCT MEDIAN ISLAND
- CONNECT TO EXIST RCP WITH CONCRETE COLLAR (SEE SHEET DT04)
- CONSTRUCT BUS PAD
- CONSTRUCT CONCRETE VALLEY GUTTER

CONTRACTOR AGREES THAT HE SHALL ASSUME SOLE AND COMPLETE RESPONSIBILITY FOR JOB SITE CONDITIONS DURING THE COURSE OF CONSTRUCTION OF THIS PROJECT, INCLUDING SAFETY OF ALL PERSONS AND PROPERTY THAT MAY BE AFFECTED BY THIS PROJECT. THE CONTRACTOR SHALL BE RESPONSIBLE FOR OBTAINING ALL NECESSARY PERMITS AND APPROVALS FROM THE CITY OF CUPERTINO AND THE CALIFORNIA DEPARTMENT OF TRANSPORTATION AND PUBLIC SAFETY (CALTRANS). THE CONTRACTOR SHALL BE RESPONSIBLE FOR OBTAINING ALL NECESSARY PERMITS AND APPROVALS FROM THE CALIFORNIA DEPARTMENT OF TRANSPORTATION AND PUBLIC SAFETY (CALTRANS). THE CONTRACTOR SHALL BE RESPONSIBLE FOR OBTAINING ALL NECESSARY PERMITS AND APPROVALS FROM THE CALIFORNIA DEPARTMENT OF TRANSPORTATION AND PUBLIC SAFETY (CALTRANS).

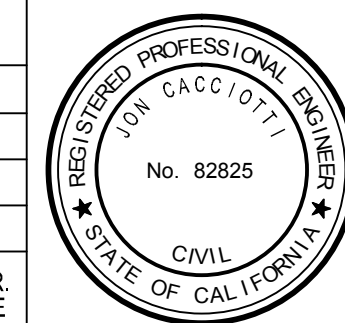
S:\PROJECTS\468300\468306 - MCCLELLAN CYCLE TRACKS\DWG\DT DRAWINGS\468306.DWG



**HMM**  
 Land Use Entitlements  
 Land Planning  
 Landscape Architecture  
 Civil Engineering  
 Utility Design  
 Land Surveying  
 Stormwater Compliance

1570 Oakland Road  
 San Jose, CA 95131  
 (408) 487-2200  
 HMM.ca

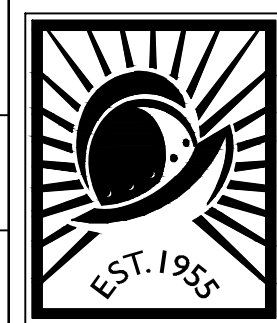
Date:	December 1, 2017								
Scale:	1" = 20'								
Designed:	AN								
Drawn:	AN								
Checked:	JC								
Proj. Engr:	JC								
File:									



IMPROVEMENT PLANS FOR  
**McCLELLAN ROAD  
 SEPARATED BIKEWAYS**

CUPERTINO CALIFORNIA

FOR CITY OF CUPERTINO USE  
 PROJECT # \_\_\_\_\_  
 PUBLIC WORKS INSPECTOR: \_\_\_\_\_  
 VOICE MAIL: \_\_\_\_\_  
 PROJECT ENGINEER: \_\_\_\_\_  
 NAME \_\_\_\_\_ DATE \_\_\_\_\_



**GENERAL SHEET NOTES**

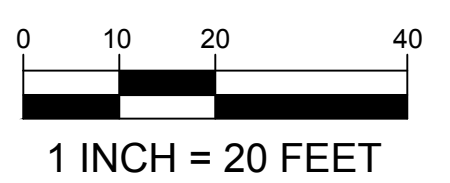
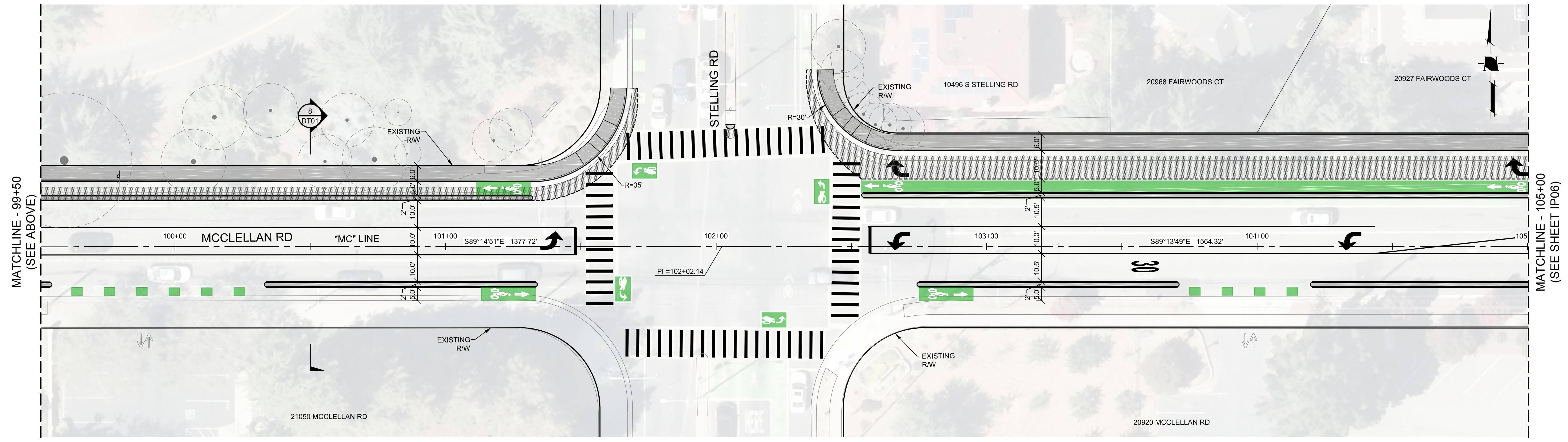
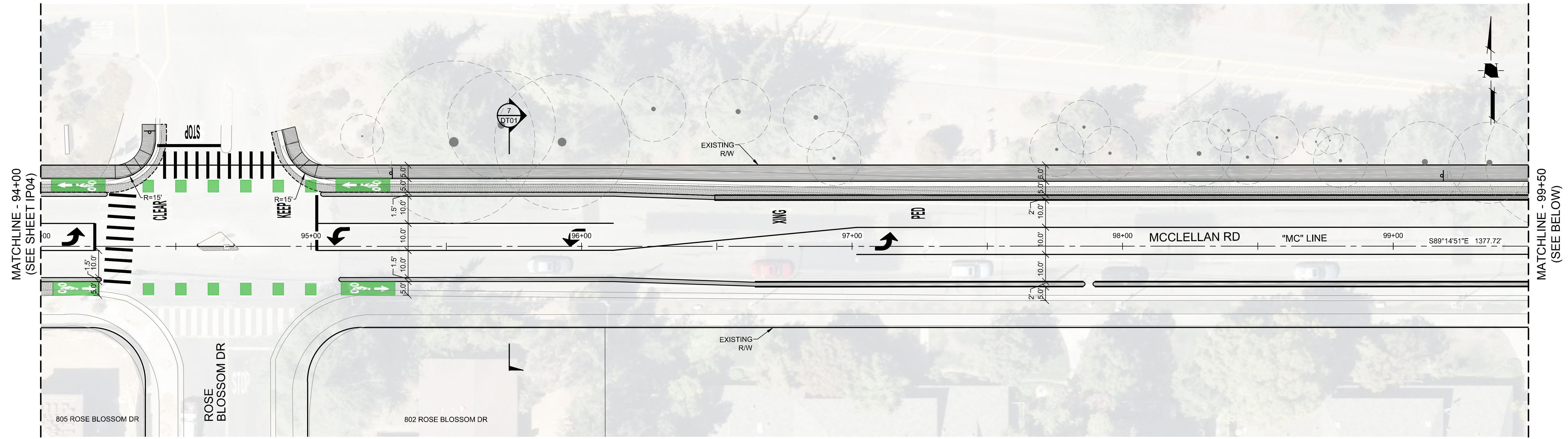
- TOP OF CURB ELEVATIONS AT DRIVEWAYS AND OTHER DEPRESSED AREAS REPRESENT THEORETICAL FULL HEIGHT CURB ELEVATION. DEPRESSED CURB SECTIONS AT DRIVEWAYS SHALL BE CONSTRUCTED 0.45' BELOW ELEVATION SHOWN PER CITY STANDARD DETAIL.

**SHEET KEYNOTES**

- REMOVE EXIST AC DIKE/CURB AND GUTTER
- REMOVE EXIST CONCRETE SIDEWALK/ DRIVEWAY/ WALKWAY
- REMOVE EXIST ASPHALT CONCRETE DRIVEWAY/ WALKWAY
- REMOVE EXIST FENCE
- REMOVE EXIST PRIVATE ENHANCEMENT
- REMOVE EXIST STORM DRAIN INLET AND PIPE
- REMOVE EXIST ROADSIDE SIGN
- REMOVE PAVER
- REMOVE MIDWEST GUARDRAIL SYSTEM
- REMOVE TRAFFIC ISLAND
- ABANDON EXIST SDI
- REMOVE ADA RAMP
- REMOVE BOLLARD
- PROTECT EXIST UTILITY IN PLACE
- PROTECT EXIST MAILBOX IN PLACE
- PROTECT EXIST TREE IN PLACE
- PROTECT EXIST FENCE AND POSTS IN PLACE
- PROTECT EXIST PRIVATE ENHANCEMENT IN PLACE
- PROTECT EXIST ROADSIDE SIGN IN PLACE
- ADJUST UTILITY TO GRADE
- RELOCATE EXIST FENCE
- RELOCATE EXIST MAILBOX
- RELOCATE UTILITY POLE AND GUY WIRES (WBO)
- RELOCATE EXIST ROADSIDE SIGN
- RELOCATE UTILITY (WBO)
- RELOCATE UPRR GATE
- RELOCATE BOLLARD
- CONSTRUCT A1-6 CURB AND GUTTER PER CITY OF CUPERTINO STANDARD DETAIL 1-16
- CONSTRUCT A2-6 CURB AND GUTTER PER CITY OF CUPERTINO STANDARD DETAIL 1-16
- CONSTRUCT SIDEWALK PER CITY OF CUPERTINO STANDARD DETAIL 1-19
- INSTALL PRECAST CURB
- CONSTRUCT SIDEWALK LEVEL BICYCLE LANE
- CONSTRUCT MIDWEST GUARDRAIL SYSTEM
- CONSTRUCT BICYCLE LANE RAMP
- CONSTRUCT MEDIAN ISLAND
- CONNECT TO EXIST RCP WITH CONCRETE COLLAR (SEE SHEET DT04)
- CONSTRUCT BUS PAD
- CONSTRUCT CONCRETE VALLEY GUTTER

CONTRACTOR AGREES THAT HE SHALL ASSUME SOLE AND COMPLETE RESPONSIBILITY FOR JOB SITE CONDITIONS DURING THE COURSE OF CONSTRUCTION OF THIS PROJECT, INCLUDING THE SAFETY OF ALL PERSONS AND PROPERTY THAT MAY BE AFFECTED BY THIS PROJECT. THE CONTRACTOR SHALL BE RESPONSIBLE FOR OBTAINING ALL NECESSARY PERMITS AND APPROVALS FROM THE CITY OF CUPERTINO AND THE STATE OF CALIFORNIA. THE CONTRACTOR SHALL BE RESPONSIBLE FOR OBTAINING ALL NECESSARY PERMITS AND APPROVALS FROM THE CITY OF CUPERTINO AND THE STATE OF CALIFORNIA. THE CONTRACTOR SHALL BE RESPONSIBLE FOR OBTAINING ALL NECESSARY PERMITS AND APPROVALS FROM THE CITY OF CUPERTINO AND THE STATE OF CALIFORNIA.

S:\PROJECTS\468200\468200 - MCCLELLAN CYCLE TRACKS\DWG\LOT DRAWINGS\468200R01P.DWG



**HMM**  
 Land Use Entitlements  
 Land Planning  
 Landscape Architecture  
 Civil Engineering  
 Utility Design  
 Land Surveying  
 Stormwater Compliance

1570 Oakland Road  
 San Jose, CA 95131

(408) 487-2200  
 HMM.ca.com

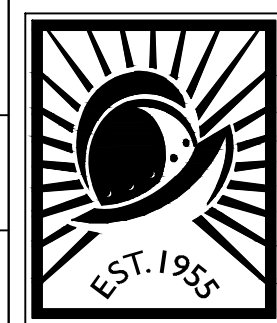
Date:	December 1, 2017				
Scale:	1" = 20'				
Designed:	AN				
Drawn:	AN				
Checked:	JC				
Proj. Engr:	JC				
File:					



IMPROVEMENT PLANS FOR  
**McCLELLAN ROAD  
 SEPARATED BIKEWAYS**

CUPERTINO CALIFORNIA

FOR CITY OF CUPERTINO USE  
 PROJECT # \_\_\_\_\_  
 PUBLIC WORKS INSPECTOR:  
 VOICE MAIL:  
 PROJECT ENGINEER  
 NAME \_\_\_\_\_ DATE \_\_\_\_\_



**CITY OF CUPERTINO**  
 IP05  
 SHEET 9 OF 23

**GENERAL SHEET NOTES**

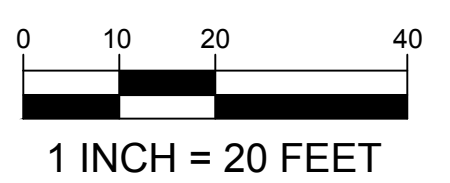
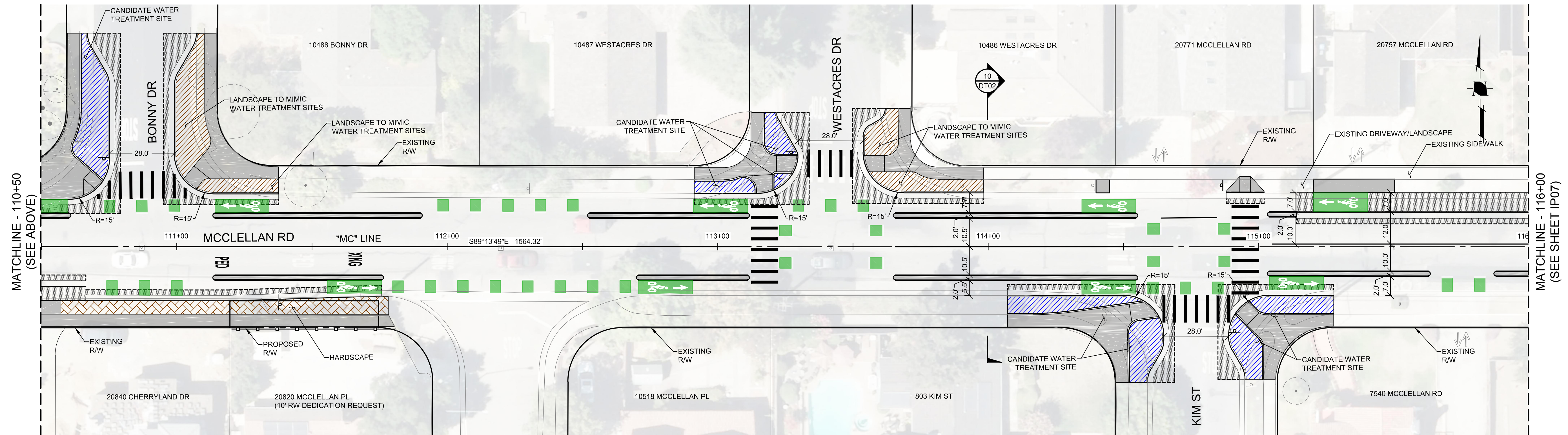
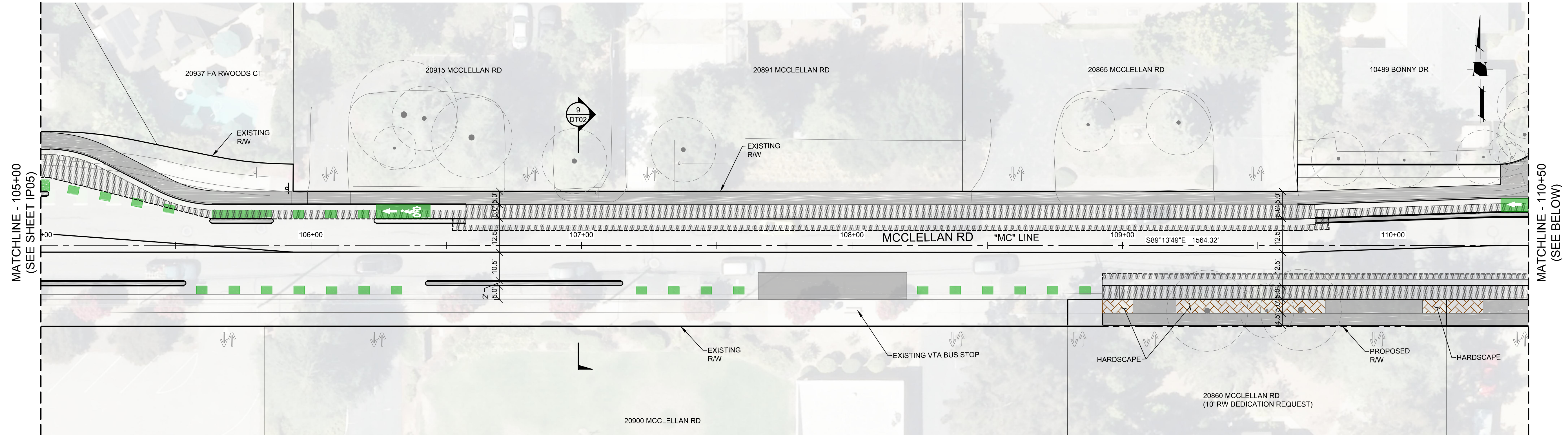
- TOP OF CURB ELEVATIONS AT DRIVEWAYS AND OTHER DEPRESSED AREAS REPRESENT THEORETICAL FULL HEIGHT CURB ELEVATION. DEPRESSED CURB SECTIONS AT DRIVEWAYS SHALL BE CONSTRUCTED 0.45' BELOW ELEVATION SHOWN PER CITY STANDARD DETAIL.

**SHEET KEYNOTES**

- REMOVE EXIST AC DIKE/CURB AND GUTTER
- REMOVE EXIST CONCRETE SIDEWALK/ DRIVEWAY/ WALKWAY
- REMOVE EXIST ASPHALT CONCRETE DRIVEWAY/ WALKWAY
- REMOVE EXIST FENCE
- REMOVE EXIST PRIVATE ENHANCEMENT
- REMOVE EXIST STORM DRAIN INLET AND PIPE
- REMOVE EXIST ROADSIDE SIGN
- REMOVE PAVER
- REMOVE MIDWEST GUARDRAIL SYSTEM
- REMOVE TRAFFIC ISLAND
- ABANDON EXIST SDI
- REMOVE ADA RAMP
- REMOVE BOLLARD
- PROTECT EXIST UTILITY IN PLACE
- PROTECT EXIST MAILBOX IN PLACE
- PROTECT EXIST TREE IN PLACE
- PROTECT EXIST FENCE AND POSTS IN PLACE
- PROTECT EXIST PRIVATE ENHANCEMENT IN PLACE
- PROTECT EXIST ROADSIDE SIGN IN PLACE
- ADJUST UTILITY TO GRADE
- RELOCATE EXIST FENCE
- RELOCATE EXIST MAILBOX
- RELOCATE UTILITY POLE AND GUY WIRES (WBO)
- RELOCATE EXIST ROADSIDE SIGN
- RELOCATE UTILITY (WBO)
- RELOCATE UPRR GATE
- RELOCATE BOLLARD
- CONSTRUCT A1-6 CURB AND GUTTER PER CITY OF CUPERTINO STANDARD DETAIL 1-16
- CONSTRUCT A2-6 CURB AND GUTTER PER CITY OF CUPERTINO STANDARD DETAIL 1-16
- CONSTRUCT SIDEWALK LEVEL BICYCLE LANE PER CITY OF CUPERTINO STANDARD DETAIL 1-19
- INSTALL PRECAST CURB
- CONSTRUCT SIDEWALK LEVEL BICYCLE LANE
- CONSTRUCT MIDWEST GUARDRAIL SYSTEM
- CONSTRUCT BICYCLE LANE RAMP
- CONSTRUCT MEDIAN ISLAND
- CONNECT TO EXIST RCP WITH CONCRETE COLLAR (SEE SHEET DT04)
- CONSTRUCT BUS PAD
- CONSTRUCT CONCRETE VALLEY GUTTER

CONTRACTOR AGREES THAT HE SHALL ASSUME SOLE AND COMPLETE RESPONSIBILITY FOR JOB SITE CONDITIONS DURING THE COURSE OF CONSTRUCTION OF THIS PROJECT, INCLUDING THE SAFETY OF ALL PERSONS AND PROPERTY THAT ARE NEARBY. THE CONTRACTOR SHALL MAINTAIN CONTINUOUSLY AND AT ALL TIMES LIMITED TO NORMAL WORKING HOURS, AND THAT THE CONTRACTOR SHALL BE RESPONSIBLE FOR THE SAFETY OF ALL PERSONS AND PROPERTY THAT ARE NEARBY. THE CONTRACTOR SHALL MAINTAIN CONTINUOUSLY AND AT ALL TIMES LIMITED TO NORMAL WORKING HOURS, AND THAT THE CONTRACTOR SHALL BE RESPONSIBLE FOR THE SAFETY OF ALL PERSONS AND PROPERTY THAT ARE NEARBY.

S:\PROJECTS\468300\468308 - MCCLELLAN CYCLE TRACKS\DWG\OT DRAWINGS\468308\IP06.DWG



**HMM**  
 Land Use Entitlements  
 Land Planning  
 Landscape Architecture  
 Civil Engineering  
 Utility Design  
 Land Surveying  
 Stormwater Compliance

1570 Oakland Road  
 San Jose, CA 95131  
 (408) 487-2200  
 HMM.ca

Date:	December 1, 2017
Scale:	1" = 20'
Designed:	AN
Drawn:	AN
Checked:	JC
Proj. Engr:	JC
File:	

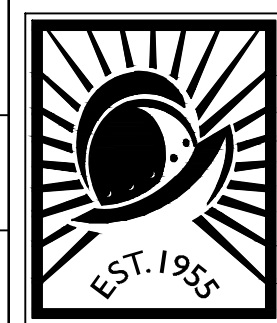
NO.	REVISIONS	DESIGN BY	DESIGN DATE	CITY APPR.	APPR. DATE



IMPROVEMENT PLANS FOR  
**McCLELLAN ROAD**  
**SEPARATED BIKEWAYS**

CUPERTINO CALIFORNIA

FOR CITY OF CUPERTINO USE  
 PROJECT # \_\_\_\_\_  
 PUBLIC WORKS INSPECTOR: \_\_\_\_\_  
 PROJECT ENGINEER: \_\_\_\_\_  
 NAME \_\_\_\_\_ DATE \_\_\_\_\_





**GENERAL SHEET NOTES**

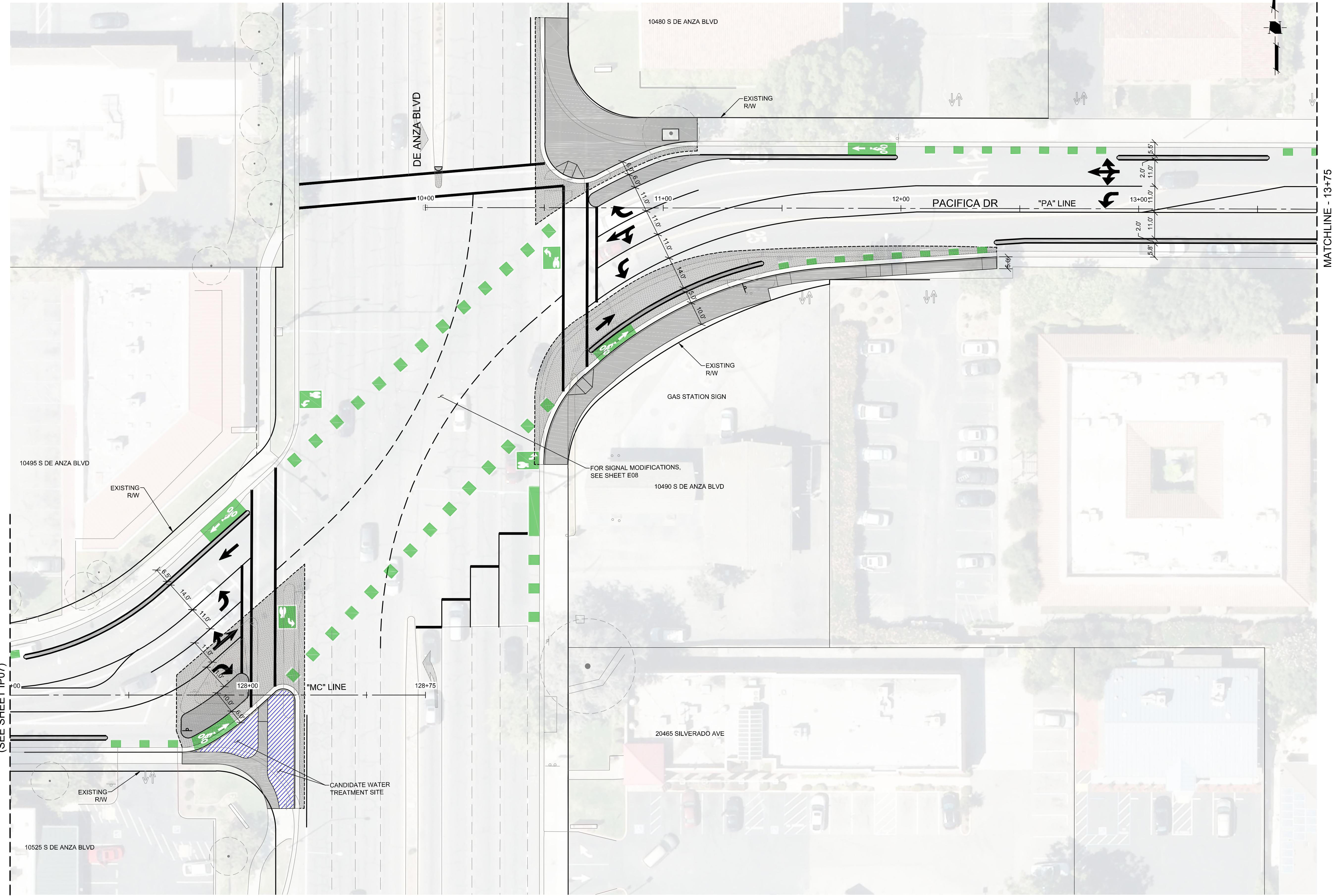
- TOP OF CURB ELEVATIONS AT DRIVEWAYS AND OTHER DEPRESSED AREAS REPRESENT THEORETICAL FULL HEIGHT CURB ELEVATION. DEPRESSED CURB SECTIONS AT DRIVEWAYS SHALL BE CONSTRUCTED 0.45' BELOW ELEVATION SHOWN PER CITY STANDARD DETAIL.

**SHEET KEYNOTES**

- REMOVE EXIST AC DIKE/CURB AND GUTTER
- REMOVE EXIST CONCRETE SIDEWALK/ DRIVEWAY/ WALKWAY
- REMOVE EXIST ASPHALT CONCRETE DRIVEWAY/ WALKWAY
- REMOVE EXIST FENCE
- REMOVE EXIST PRIVATE ENHANCEMENT
- REMOVE EXIST STORM DRAIN INLET AND PIPE
- REMOVE EXIST ROADSIDE SIGN
- REMOVE PAVER
- REMOVE MIDWEST GUARDRAIL SYSTEM
- REMOVE TRAFFIC ISLAND
- ABANDON EXIST SDI
- REMOVE ADA RAMP
- REMOVE BOLLARD
- PROTECT EXIST UTILITY IN PLACE
- PROTECT EXIST MAILBOX IN PLACE
- PROTECT EXIST TREE IN PLACE
- PROTECT EXIST FENCE AND POSTS IN PLACE
- PROTECT EXIST PRIVATE ENHANCEMENT IN PLACE
- PROTECT EXIST ROADSIDE SIGN IN PLACE
- ADJUST UTILITY TO GRADE
- RELOCATE EXIST FENCE
- RELOCATE EXIST MAILBOX
- RELOCATE UTILITY POLE AND GUY WIRES (WBO)
- RELOCATE EXIST ROADSIDE SIGN
- RELOCATE UTILITY (WBO)
- RELOCATE UPRR GATE
- RELOCATE BOLLARD
- CONSTRUCT A1-6 CURB AND GUTTER PER CITY OF CUPERTINO STANDARD DETAIL 1-16
- CONSTRUCT A2-6 CURB AND GUTTER PER CITY OF CUPERTINO STANDARD DETAIL 1-16
- CONSTRUCT SIDEWALK PER CITY OF CUPERTINO STANDARD DETAIL 1-19
- INSTALL PRECAST CURB
- CONSTRUCT SIDEWALK LEVEL BICYCLE LANE
- CONSTRUCT MIDWEST GUARDRAIL SYSTEM
- CONSTRUCT BICYCLE LANE RAMP
- CONSTRUCT MEDIAN ISLAND
- CONNECT TO EXIST RCP WITH CONCRETE COLLAR (SEE SHEET DT04)
- CONSTRUCT BUS PAD
- CONSTRUCT CONCRETE VALLEY GUTTER

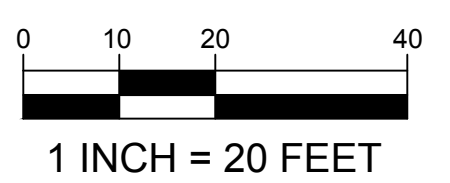
CONTRACTOR AGREES THAT HE SHALL ASSUME SOLE AND COMPLETE RESPONSIBILITY FOR JOB SITE CONDITIONS DURING THE COURSE OF CONSTRUCTION OF THIS PROJECT, INCLUDING THE SAFETY OF ALL PERSONS AND PROPERTY THAT ARE NEARBY. HIS RESPONSIBILITIES SHALL BE CONTINUOUS AND NOT BE LIMITED TO NORMAL WORKING HOURS, AND THAT THE CONTRACTOR SHALL BE RESPONSIBLE FOR OBTAINING ALL NECESSARY PERMITS AND APPROVALS, IN CONNECTION WITH THE PERFORMANCE OF WORK ON THIS PROJECT, EXCEPTING FOR LIABILITY ARISING FROM THE SOLE NEGLIGENCE OF THE OWNER OR THE ENGINEER.

S:\PROJECTS\468200\468200-088 - McCLELLAN CYCLE TRACKS\DWG\LOT DRAWINGS\468200R.DWG



MATCHLINE - 127+00  
(SEE SHEET IP07)

MATCHLINE - 13+75  
(SEE SHEET IP09)



**HMM**  
 Land Use Entitlements  
 Land Planning  
 Landscape Architecture  
 Civil Engineering  
 Utility Design  
 Land Surveying  
 Stormwater Compliance

1570 Oakland Road  
 San Jose, CA 95131  
 (408) 487-2200  
 HMM.ca

Date:	December 1, 2017
Scale:	1" = 20'
Designed:	AN
Drawn:	AN
Checked:	JC
Proj. Engr:	JC
File:	

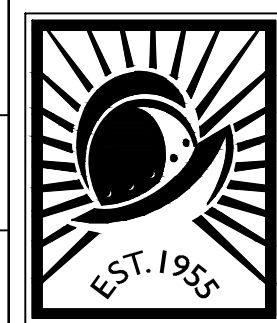
NO.	REVISIONS	DESIGN BY	DESIGN DATE	CITY APPR.	APPR. DATE



IMPROVEMENT PLANS FOR  
**McCLELLAN ROAD  
 SEPARATED BIKEWAYS**

CUPERTINO CALIFORNIA

FOR CITY OF CUPERTINO USE  
 PROJECT # \_\_\_\_\_  
 PUBLIC WORKS INSPECTOR:  
 VOICE MAIL:  
 PROJECT ENGINEER  
 NAME \_\_\_\_\_ DATE \_\_\_\_\_





CONTRACTOR AGREES THAT HE SHALL ASSUME SOLE AND COMPLETE RESPONSIBILITY FOR JOB SITE CONDITIONS DURING THE COURSE OF CONSTRUCTION OF THIS PROJECT, INCLUDING THE SAFETY OF ALL PERSONS AND PROPERTY. THAT THIS REQUIREMENT SHALL APPLY CONTINUOUSLY AND NOT BE LIMITED TO NORMAL WORKING HOURS; AND THAT THE CONTRACTOR SHALL BE RESPONSIBLE FOR THE PROTECTION OF ALL UTILITIES AND STRUCTURES ON THIS PROJECT, EXCEPTING FOR LIABILITY ARISING FROM THE SOLE NEGLIGENCE OF THE OWNER OR THE ENGINEER.

S:\PROJECTS\4819000\4819008 - MCCLELLAN CYCLE TRACKS\DWG\PLOT DRAWING\GS4819008.PLOT.DWG

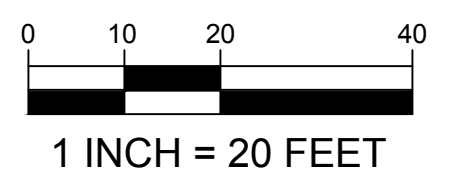
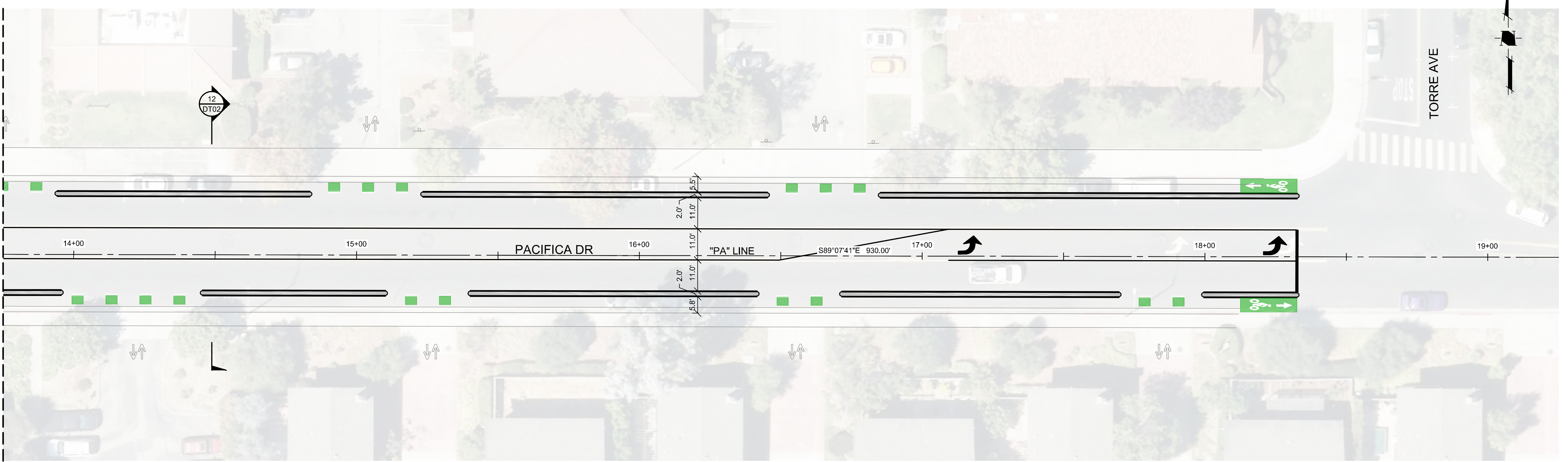
**GENERAL SHEET NOTES**

1. TOP OF CURB ELEVATIONS AT DRIVEWAYS AND OTHER DEPRESSED AREAS REPRESENT THEORETICAL FULL HEIGHT CURB ELEVATION. DEPRESSED CURB SECTIONS AT DRIVEWAYS SHALL BE CONSTRUCTED 0.45' BELOW ELEVATION SHOWN PER CITY STANDARD DETAIL.

**SHEET KEYNOTES**

1. REMOVE EXIST AC DIKE/CURB AND GUTTER
2. REMOVE EXIST CONCRETE SIDEWALK/ DRIVEWAY/ WALKWAY
3. REMOVE EXIST ASPHALT CONCRETE DRIVEWAY/ WALKWAY
4. REMOVE EXIST FENCE
5. REMOVE EXIST PRIVATE ENHANCEMENT
6. REMOVE EXIST STORM DRAIN INLET AND PIPE
7. REMOVE EXIST ROADSIDE SIGN
8. REMOVE PAVER
9. REMOVE MIDWEST GUARDRAIL SYSTEM
10. REMOVE TRAFFIC ISLAND
11. ABANDON EXIST SDI
12. REMOVE ADA RAMP
13. REMOVE BOLLARD
20. PROTECT EXIST UTILITY IN PLACE
21. PROTECT EXIST MAILBOX IN PLACE
22. PROTECT EXIST TREE IN PLACE
23. PROTECT EXIST FENCE AND POSTS IN PLACE
24. PROTECT EXIST PRIVATE ENHANCEMENT IN PLACE
25. PROTECT EXIST ROADSIDE SIGN IN PLACE
30. ADJUST UTILITY TO GRADE
40. RELOCATE EXIST FENCE
41. RELOCATE EXIST MAILBOX
42. RELOCATE UTILITY POLE AND GUY WIRES (WBO)
43. RELOCATE EXIST ROADSIDE SIGN
44. RELOCATE UTILITY (WBO)
45. RELOCATE UPRR GATE
46. RELOCATE BOLLARD
50. CONSTRUCT A1-6 CURB AND GUTTER PER CITY OF CUPERTINO STANDARD DETAIL 1-16
51. CONSTRUCT A2-6 CURB AND GUTTER PER CITY OF CUPERTINO STANDARD DETAIL 1-16
52. CONSTRUCT SIDEWALK PER CITY OF CUPERTINO STANDARD DETAIL 1-19
53. INSTALL PRECAST CURB
54. CONSTRUCT SIDEWALK LEVEL BICYCLE LANE
55. CONSTRUCT MIDWEST GUARDRAIL SYSTEM
56. CONSTRUCT BICYCLE LANE RAMP
57. CONSTRUCT MEDIAN ISLAND
58. CONNECT TO EXIST RCP WITH CONCRETE COLLAR (SEE SHEET DT04)
59. CONSTRUCT BUS PAD
60. CONSTRUCT CONCRETE VALLEY GUTTER

MATCHLINE - 13+75  
(SEE SHEET IP08)



**HMH**  
 Land Use Entitlements  
 Land Planning  
 Landscape Architecture  
 Civil Engineering  
 Utility Design  
 Land Surveying  
 Stormwater Compliance

1570 Oakland Road  
 San Jose, CA 95131

(408) 487-2200  
 HMH.ca.com

Date:	December 1, 2017						
Scale:	1" = 20'						
Designed:	AN						
Drawn:	AN						
Checked:	JC						
Proj. Engr:	JC						
File:							



IMPROVEMENT PLANS FOR  
**MCCLELLAN ROAD  
 SEPARATED BIKEWAYS**

CUPERTINO CALIFORNIA

FOR CITY OF CUPERTINO USE  
 PROJECT # \_\_\_\_\_  
 PUBLIC WORKS INSPECTOR:  
 VOICE MAIL:  
 PROJECT ENGINEER  
 NAME \_\_\_\_\_ DATE \_\_\_\_\_



**CITY OF  
 CUPERTINO**

**IP09**

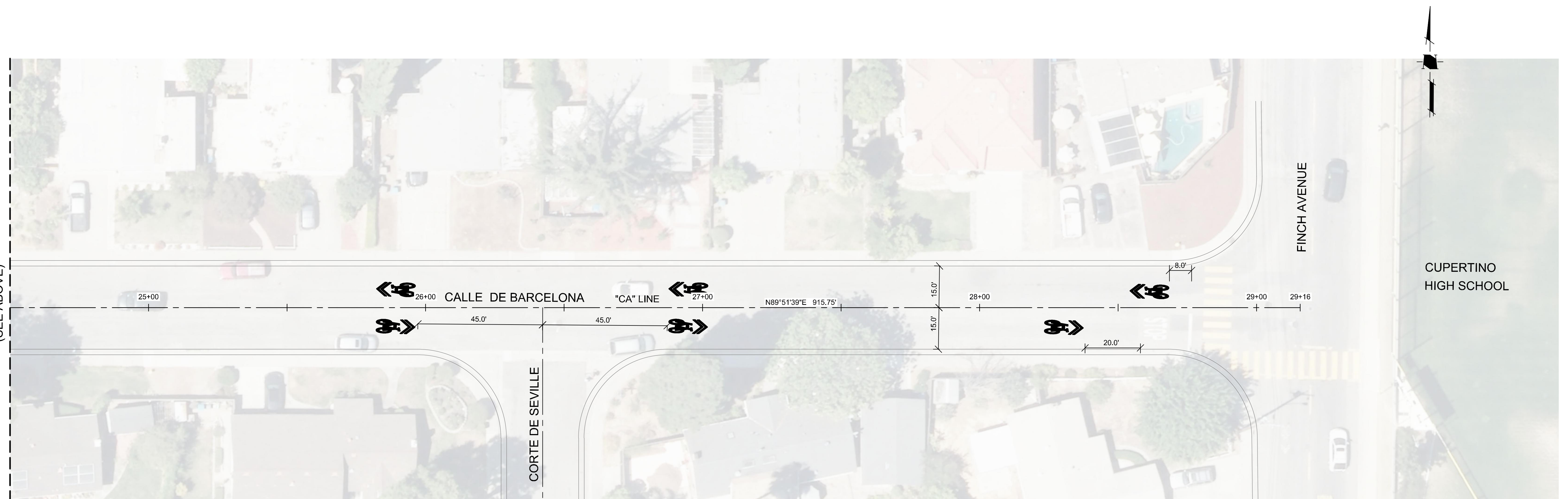
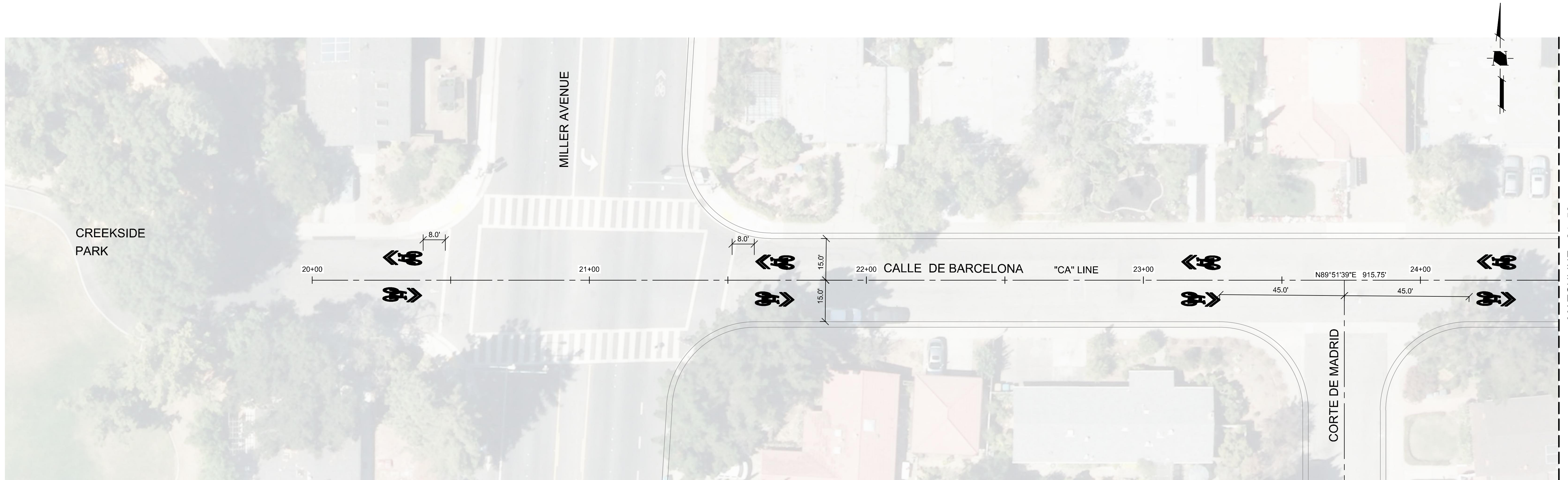
SHEET 13 OF 23

**GENERAL SHEET NOTES**

1. TOP OF CURB ELEVATIONS AT DRIVEWAYS AND OTHER DEPRESSED AREAS REPRESENT THEORETICAL FULL HEIGHT CURB ELEVATION. DEPRESSED CURB SECTIONS AT DRIVEWAYS SHALL BE CONSTRUCTED 0.45' BELOW ELEVATION SHOWN PER CITY STANDARD DETAIL.

**SHEET KEYNOTES**

1. REMOVE EXIST AC DIKE/CURB AND GUTTER
2. REMOVE EXIST CONCRETE SIDEWALK/ DRIVEWAY/ WALKWAY
3. REMOVE EXIST ASPHALT CONCRETE DRIVEWAY/ WALKWAY
4. REMOVE EXIST FENCE
5. REMOVE EXIST PRIVATE ENHANCEMENT
6. REMOVE EXIST STORM DRAIN INLET AND PIPE
7. REMOVE EXIST ROADSIDE SIGN
8. REMOVE PAVER
9. REMOVE MIDWEST GUARDRAIL SYSTEM
10. REMOVE TRAFFIC ISLAND
11. ABANDON EXIST SDI
12. REMOVE ADA RAMP
13. REMOVE BOLLARD
20. PROTECT EXIST UTILITY IN PLACE
21. PROTECT EXIST MAILBOX IN PLACE
22. PROTECT EXIST TREE IN PLACE
23. PROTECT EXIST FENCE AND POSTS IN PLACE
24. PROTECT EXIST PRIVATE ENHANCEMENT IN PLACE
25. PROTECT EXIST ROADSIDE SIGN IN PLACE
30. ADJUST UTILITY TO GRADE
40. RELOCATE EXIST FENCE
41. RELOCATE EXIST MAILBOX
42. RELOCATE UTILITY POLE AND GUY WIRES (WBO)
43. RELOCATE EXIST ROADSIDE SIGN
44. RELOCATE UTILITY (WBO)
45. RELOCATE UPRR GATE
46. RELOCATE BOLLARD
50. CONSTRUCT A1-6 CURB AND GUTTER PER CITY OF CUPERTINO STANDARD DETAIL 1-16
51. CONSTRUCT A2-6 CURB AND GUTTER PER CITY OF CUPERTINO STANDARD DETAIL 1-16
52. CONSTRUCT SIDEWALK PER CITY OF CUPERTINO STANDARD DETAIL 1-19
53. INSTALL PRECAST CURB
54. CONSTRUCT SIDEWALK LEVEL BICYCLE LANE
55. CONSTRUCT MIDWEST GUARDRAIL SYSTEM
56. CONSTRUCT BICYCLE LANE RAMP
57. CONSTRUCT MEDIAN ISLAND
58. CONNECT TO EXIST RCP WITH CONCRETE COLLAR (SEE SHEET DT04)
59. CONSTRUCT BUS PAD
60. CONSTRUCT CONCRETE VALLEY GUTTER



CONTRACTOR AGREES THAT THE CONTRACTOR SHALL ASSUME SOLE AND COMPLETE RESPONSIBILITY FOR THE COURSE OF CONSTRUCTION OF THIS PROJECT, INCLUDING THE PROTECTION OF ALL EXISTING UTILITIES AND STRUCTURES. THE CONTRACTOR SHALL BE RESPONSIBLE FOR OBTAINING ALL NECESSARY PERMITS AND SHALL DEFEND, INDEMNIFY AND HOLD THE OWNER AND THE ENGINEER HARMLESS FROM ANY AND ALL LIABILITY, REAL OR ALLEGED, IN CONNECTION WITH THE PERFORMANCE OF WORK ON THIS PROJECT EXCEPTING FOR LIABILITY ARISING FROM THE SOLE NEGLIGENCE OF THE OWNER OR THE ENGINEER.

S:\PROJECTS\480300\480308 - MCCLELLAN CYCLE TRACKS\DWG\1010101.DWG



Land Use Entitlements  
Land Planning  
Landscape Architecture  
Civil Engineering  
Utility Design  
Land Surveying  
Stormwater Compliance

1570 Oakland Road  
San Jose, CA 95131

(408) 487-2200  
HMHca.com

Date:	December 1, 2017				
Scale:	1" = 20'				
Designed:	AN				
Drawn:	AN				
Checked:	JC				
Proj. Engr:	JC				
File:					



REVISIONS

DESIGN BY DESIGN DATE CITY APPR. APPR. DATE

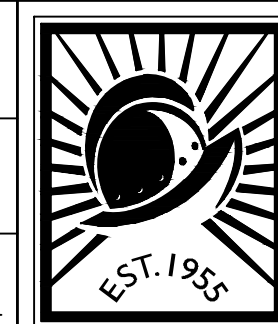


IMPROVEMENT PLANS FOR  
**McCLELLAN ROAD**  
**SEPARATED BIKEWAYS**

CUPERTINO CALIFORNIA

FOR CITY OF CUPERTINO USE  
PROJECT # \_\_\_\_\_  
PUBLIC WORKS INSPECTOR:  
VOICE MAIL:  
PROJECT ENGINEER

NAME \_\_\_\_\_ DATE \_\_\_\_\_



**CITY OF CUPERTINO**

**IP10**

SHEET 14 OF 23

