

Share the road safely with all other users, no matter how you choose to get to and from school. Use extra caution near younger students walking or biking to school.

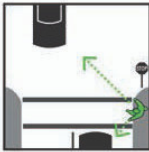
Obey adult crossing guards. They are there to help everyone cross congested intersections safely.

Walk or Skate Safely



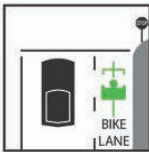
Don't assume drivers see you. Make eye contact before crossing intersections.

Be alert. Look for cars coming from all directions before entering the street - including behind you.

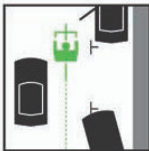


Cross at corners and crosswalks. This is where drivers expect pedestrians.

Bike Safely



Be predictable. Obey ALL stop signs and traffic signals. Never ride wrong way. The best way to avoid crashes as well as traffic tickets is to follow the same rules of the road as apply to car drivers.



Be alert. Watch out for drivers turning left or right, or coming out of driveways. Avoid car doors opening in front of you by riding out of the door zone. Yield to pedestrians.



Wear your helmet and buckle it every time. It's the law if you are under 18, and wise at any age. To best protect your brain, your helmet must fit properly: snug and level on your head, just above your eyebrows.



Be visible. Use a bright headlight and taillight at night.

Avoid texting, phone calls, or music while biking.

Family Tips for Safe Driving/Bicycling

1. **DO NOT** drop off students in Southern parking lot off Lazaneo Dr.
2. **DO NOT** drop off students in intersections and avoid idling your vehicle during drop-off/pick up
3. **Inside the drop-off loop, pull all the way forward and drop off along curb ONLY**
4. **Slow down and use extra caution in school zones**
5. **Signal your turns and ALWAYS yield to pedestrians**
6. **Don't make u-turns and other unsafe maneuvers that put others at risk**
7. **Avoid texting, phone calls, and other distractions while driving**
8. **Cyclists- please dismount from your bicycles prior to crossing at crosswalks**
9. **Cyclists- please use proper turn signals when riding**

We welcome volunteers to help with Safe Routes 2 School events and programs at this school! E-mail: saferroutes@cupertino.org

City of Cupertino
Safe Routes to School
www.cupertino.org/saferroutes



LAWSON MIDDLE SCHOOL

Suggested Routes



CUPERTINO

Lawson Middle School

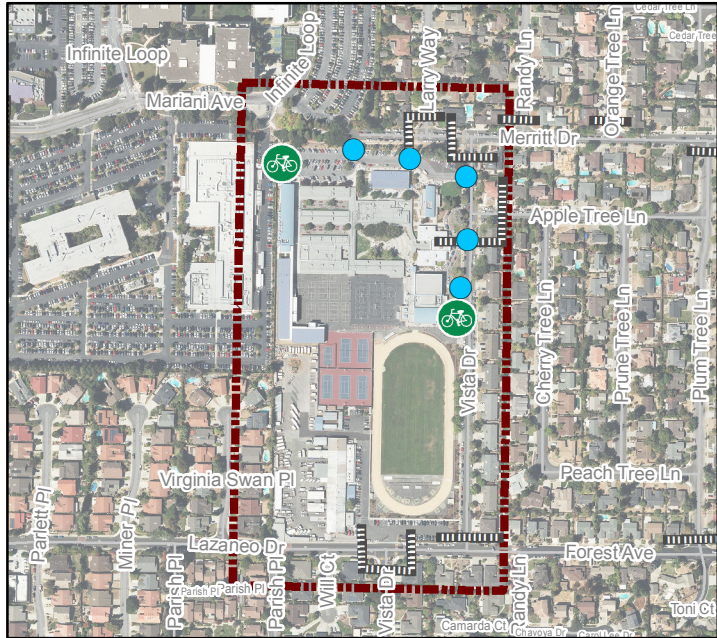
Suggested Routes to School

About Safe Routes 2 School:

Cupertino Safe Routes 2 School is a partnership program between the City of Cupertino, Cupertino Schools, Fremont Union High School District, Cupertino Union School District, and the Santa Clara County Sheriff's office. We aim to reduce traffic and pollution and increase safety by bringing people together to craft solutions to the impending traffic concerns facing our community.

- Pedestrian and Bike Access
- Suggested Route (Bike or Walk)
- Bike Parking
- Est Walking Time (Bike Time)
- Crossing Guard
- Crosswalks
- Pedestrian Flags
- Bike Lane
- Bike Route
- Traffic Signals
- City Boundary
- Stop Signs

*Use sidewalks and crosswalks when available



Contact Us:

For more information or ways to get involved, visit: cupertino.org/saferoutes or email saferoutes@cupertino.org

