

Prepare for Winter Storms

Are you flood safe? Santa Clara County has had several damaging floods over the years. It is important that you make the necessary plans to protect your family and property from flooding. Most homeowner's and renters insurance do not cover flood damage; and typically there is a 30-day waiting period for a policy to go into effect.

Floodwater can flow swiftly through neighborhoods and away from streams when creeks "overbank" or flood. Dangerously fast-moving floodwaters can flow thousands of feet away from the flooded creek within minutes.

Don't wait for the damage to happen. Plan ahead to keep your family and property safe.

www.valleywater.org/Floodready



Keep floodsafe with tips from the Santa Clara Valley Water District!

Keep this information handy!

Report street flooding or blocked storm drains or contact your local floodplain manager to learn if your home is in a floodplain:

Campbell	(408) 866-2145	*Palo Alto	(650) 496-6974
*Cupertino	(408) 777-3269		(650) 329-2413‡
	(408) 299-2507‡	*San José	(408) 794-1900
*Gilroy	(408) 846-0444		(408) 277-8956‡
	(408) 846-0350‡	*Santa Clara	(408) 615-3080
*Los Altos	(650) 947-2785		(408) 615-5640‡
	(650) 947-2827‡	Saratoga	(408) 868-1245
Los Altos Hills	(650) 941-7222		(408) 299-2507‡
Los Gatos	(408) 399-5770	*Sunnyvale	(408) 730-7400
*Milpitas	(408) 586-2600	*Unincorporated	(408) 494-2750
	(408) 586-2400‡	(East Yard)	
Monte Sereno	(408) 354-7635		(408) 366-3100
	(408) 299-2507‡	(West Yard)	
*Morgan Hill	(408) 776-7333		(408) 683-1240
	(408) 779-2101‡	(South Yard)	
*Mountain View	(650) 903-6329	Santa Clara Valley	
	(650) 903-6395‡	Water District	(408) 630-2378
*Participating CRS communities		‡ Use this number after business hours	

WHAT TO DO

Protect your family and property from flooding

before

- Consider flood insurance. To get insured, call **1-888-379-9531** or go to www.floodsmart.gov.
- Prepare a family emergency plan and emergency kit for your home and car with supplies. Store important documents and valuables in a safe deposit box. For more information, visit: www.ready.gov/make-a-plan
- Designate a family meeting spot.
- Examine your house for cracks in the foundation, exterior walls and small openings around pipes. Seal them.
- Build a sandbag barrier to block shallow water from entering structures. Use of sandbag guidelines: valleywater.org/sandbags/
- Place valuables in a high place (2nd floor, if possible) and move vehicles to higher ground.
- Keep rain gutters and drainage channels free of debris.



Download the free Flood App! Visit www.redcross.org/prepare/mobile-apps/flood

Text "GETFLOOD" to 90999 or search "Red Cross Flood" in the Apple App Store or Google Play.

during

- Be aware that flash flooding can occur. If a flood is imminent, avoid low-lying areas and seek shelter in the highest area possible.
- Tune to radio station KCBS (740 AM) for emergency information.
- If advised to evacuate, do so immediately. Turn off utilities at the main switches or valves. Disconnect electrical appliances. Do not touch electrical equipment if you are wet or standing in water.
- DO NOT drive into flooded areas. If floodwaters rise around your car, abandon the car and move to higher ground. A foot of water will cause many vehicles to float. Two feet of rushing water can carry away most vehicles, including SUVs and pick-ups.



Sign up for the free "Alert SCC" Santa Clara County emergency alert system at www.alertscc.com.



Download the ReadySCC app to get emergency notifications, create your emergency plan, follow a detailed guide for preparedness and more.

after

- Listen for news reports on whether the community's water supply is safe to drink.
- Never drive through flooded roadways. Play it smart, play it safe. Whether driving or walking, any time you come to a flooded area, **Turn Around Don't Drown®**. bit.ly/2hBE7WD Don't walk, swim, drive or play in floodwater.
- DO NOT walk in floodwaters. Water may be contaminated from oil, gasoline or raw sewage. Underground or downed power lines may also have electrically charged the water. Stay away from downed power lines and report them to your power company
- Return home only when authorities indicate it is safe.

Santa Clara Valley
Water District



CONTACT US

See trash or downed trees in a creek? Want to report dumping or other problems? Let us know. Use our Access Valley Water customer request and information system to submit requests directly to a water district staff person. Go to Valleywater.org or download the **Access Valley Water App**.

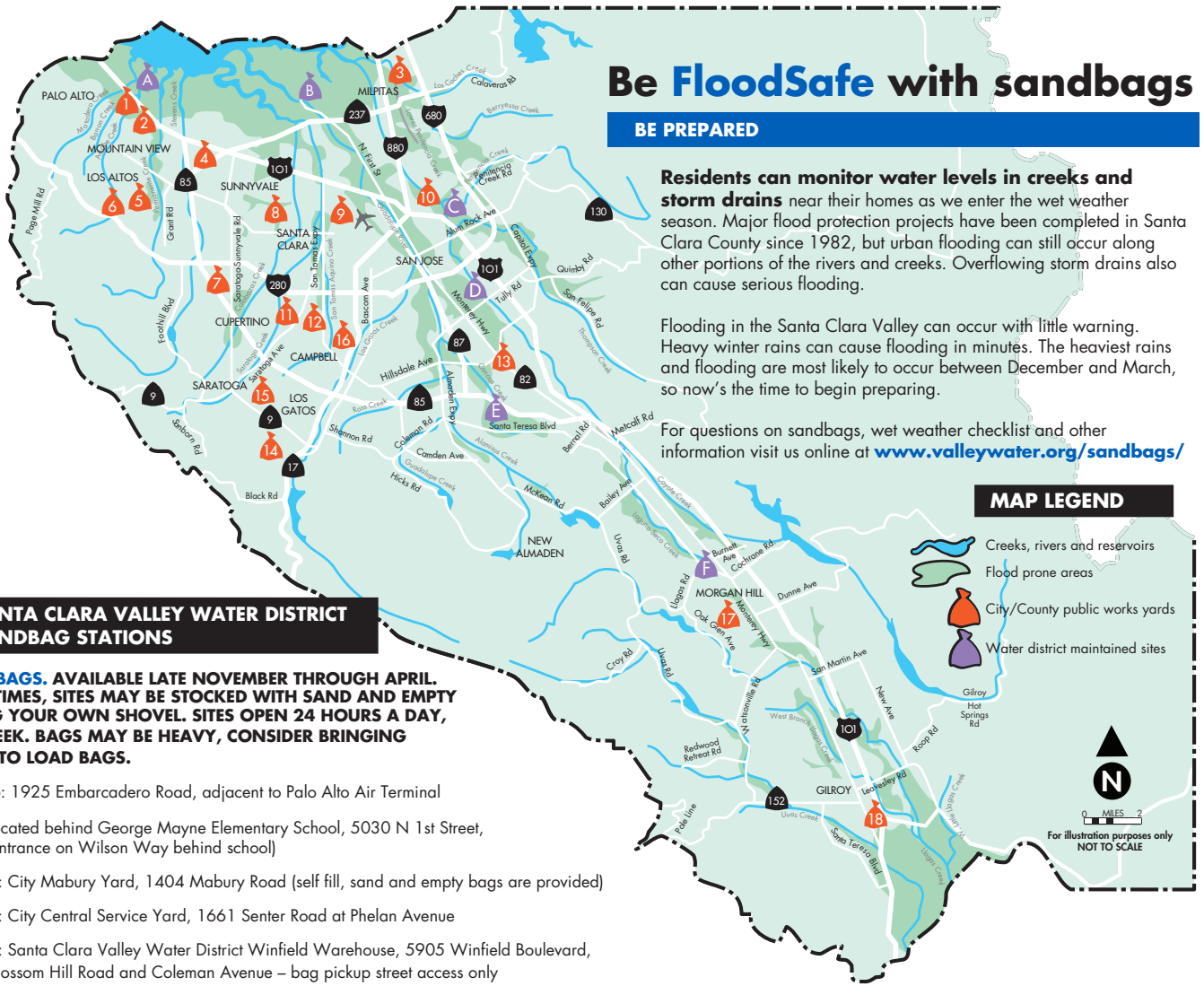
Be FloodSafe with sandbags

BE PREPARED

Residents can monitor water levels in creeks and storm drains near their homes as we enter the wet weather season. Major flood protection projects have been completed in Santa Clara County since 1982, but urban flooding can still occur along other portions of the rivers and creeks. Overflowing storm drains also can cause serious flooding.

Flooding in the Santa Clara Valley can occur with little warning. Heavy winter rains can cause flooding in minutes. The heaviest rains and flooding are most likely to occur between December and March, so now's the time to begin preparing.

For questions on sandbags, wet weather checklist and other information visit us online at www.valleywater.org/sandbags/



SANTA CLARA VALLEY WATER DISTRICT SANDBAG STATIONS

FILLED SANDBAGS. AVAILABLE LATE NOVEMBER THROUGH APRIL. AT CERTAIN TIMES, SITES MAY BE STOCKED WITH SAND AND EMPTY BAGS. BRING YOUR OWN SHOVEL. SITES OPEN 24 HOURS A DAY, 7 DAYS A WEEK. BAGS MAY BE HEAVY, CONSIDER BRINGING ASSISTANCE TO LOAD BAGS.

- A Palo Alto:** 1925 Embarcadero Road, adjacent to Palo Alto Air Terminal
- B Alviso:** Located behind George Mayne Elementary School, 5030 N 1st Street, (entrance on Wilson Way behind school)
- C San Jose:** City Mabury Yard, 1404 Mabury Road (self fill, sand and empty bags are provided)
- D San Jose:** City Central Service Yard, 1661 Senter Road at Phelan Avenue
- E San Jose:** Santa Clara Valley Water District Winfield Warehouse, 5905 Winfield Boulevard, between Blossom Hill Road and Coleman Avenue – bag pickup street access only
- F Morgan Hill:** El Toro Fire Station, 18300 Old Monterey Road, next to the Union Pacific Railroad overpass above Monterey Highway

OTHER SOURCES OF UNFILLED SANDBAGS

UNFILLED SANDBAGS. BRING YOUR OWN SHOVEL. EMPTY BAGS SUPPLIED BY THE WATER DISTRICT. CONSIDER BRINGING ASSISTANCE TO FILL AND LOAD BAGS. PROOF OF RESIDENCY MAY BE REQUIRED AT SOME SITES. CHECK INDIVIDUAL SITES FOR OPERATING HOURS.

- 1 Palo Alto:** Mitchell Park, 600 E. Meadow Drive near baseball field. Bags and sand available all day. (650) 496-6974, after hours: (650) 329-2413
- 2 Palo Alto:** Rinconada Park Tennis Court Parking Lot (intersection of Hopkins Avenue and Newell Road). (650) 496-6974, after hours: (650) 329-2413
- 3 Milpitas:** 540 S. Abel Street. Additional bags located at the Sports Center at 1325 E. Calaveras Blvd. (408) 586-2643, after hours: (408) 586-2400. BOTH sites will have sand and bags 24/7.
- 4 Mountain View:** Public Services, 231 N. Whisman Ave. (Located at Whisman Rd. and Gladys Ave.) (650) 903-6329, after hours: (650) 903-6395. Bags and sand available all day at parking lot.
- 5 Los Altos:** Municipal Service Center, 707 Fremont Ave. at McKenzie Park parking lot. Bags and sand available all day. (650) 947-2785, after hours: (650) 947-2770
- 6 Los Altos Hills:** Corporation Yard, 27500 Purissima Rd. at Little League Field at little league field, (650) 941-7222, Mon.- Fri. 7:30 a.m. - 5:30 p.m.
- 7 Cupertino:** City Corporation Yard, 10555 Mary Ave. Bags and sand available all day outside the gate. (408) 777-3269, Mon.- Fri. 6 a.m. - 3:30 p.m., after hours: County Communications (408) 299-2507
- 8 Sunnyvale:** Corporation Yard, 221 Commercial St. at end of California Street. Bags and sand available all day. (408) 730-7510, Mon.- Fri. 6:30 a.m. - 4:30 p.m., after hours: (408) 730-7180

- 9 Santa Clara:** City Corporation Yard, 1700 Walsh Ave. (408) 615-3080, after hours: (408) 615-5640. Available 8 a.m.– 4 p.m. inside gate (Must call first)
- 10 San Jose:** County East Yard, 1505 Schallenberger Rd., Mon. - Fri., 7:30 am. - 4 p.m. (408) 494-2750, after hours: County Communications (408) 299-2507
- 11 San Jose:** County West Yard, 11030 Doyle Rd., bags and sand available anytime outside gate. (408) 366-3100, after hours: County Communications (408) 299-2507
- 12 San Jose:** City West Yard, 5090 Williams Road, filled sandbags available anytime outside gate. (408) 277-4373
- 13 San Jose:** City South Yard, 4420 Monterey Rd. at Skyway Drive, filled sandbags available anytime outside gate. (408) 361-6818
- 14 Los Gatos/Monte Sereno:** 41 Miles Avenue at Balzer Field parking lot (Monte Sereno citizens pick up at Los Gatos site), bags and sand available anytime at lot. (408) 399-5770, after hours: (408) 354-8600
- 15 Saratoga:** Corporation Yard, 19700 Allendale Ave., near Post Office, bags and sand available anytime outside gate. (408) 868-1245, after hours: County Communications (408) 299-2507
- 16 Campbell:** City Corporation Yard, 290 South Dillon Ave., (408) 866-2145, Mon.–Fri. 7 a.m. - 3:30 p.m.
- 17 Morgan Hill:** City Corporation Yard, 100 Edes Ct., Mon. - Fri. 8 a.m. - 5 p.m., open all day, bags and sand available anytime outside gate. (408) 776-7333, after hours (408) 779-2101
- 18 Gilroy:** Fire Station, 7070 Chestnut St. at 10th Street, bags and sand available in the parking lot behind fire station. (408) 846-0451, after hours: (408) 846-0350 (leave msg)