


 **57 people** attended a site visit on 11/18

 **36 comment cards** were collected

 **50% support** the project

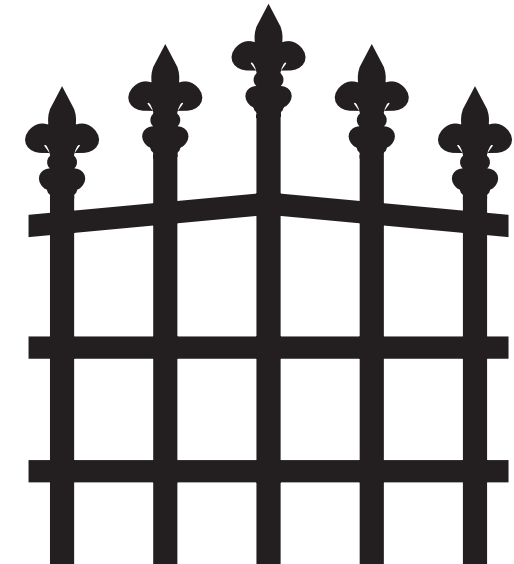
 **17% are concerned** about the project

 **33% had questions** about the project

## Major Themes



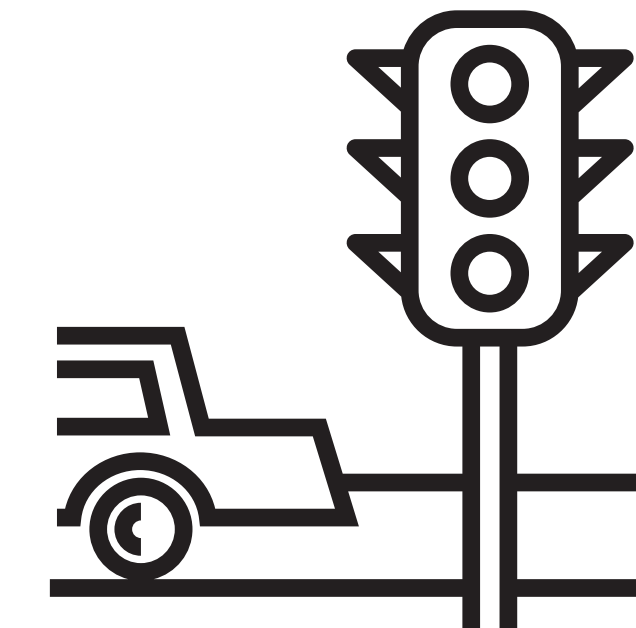
**Security and privacy** for those who live adjacent to the potential trail



**Aesthetics** of the barrier that would separate the potential trail



**Improved transportation options** for nearby residents



**Improved traffic congestion** for community members



**Cost** to implement

## What We Heard...

"**Access to Wilson Park** would be great!"

"Who has **legal responsibility** for any damages from crime or injury as a result of this path?"

[Would provide] "Safe **school transport route.**"

"Nice **exposure to nature** and the creek."

"**Safety has to be addressed** if the trail is for kids [to get] to school."

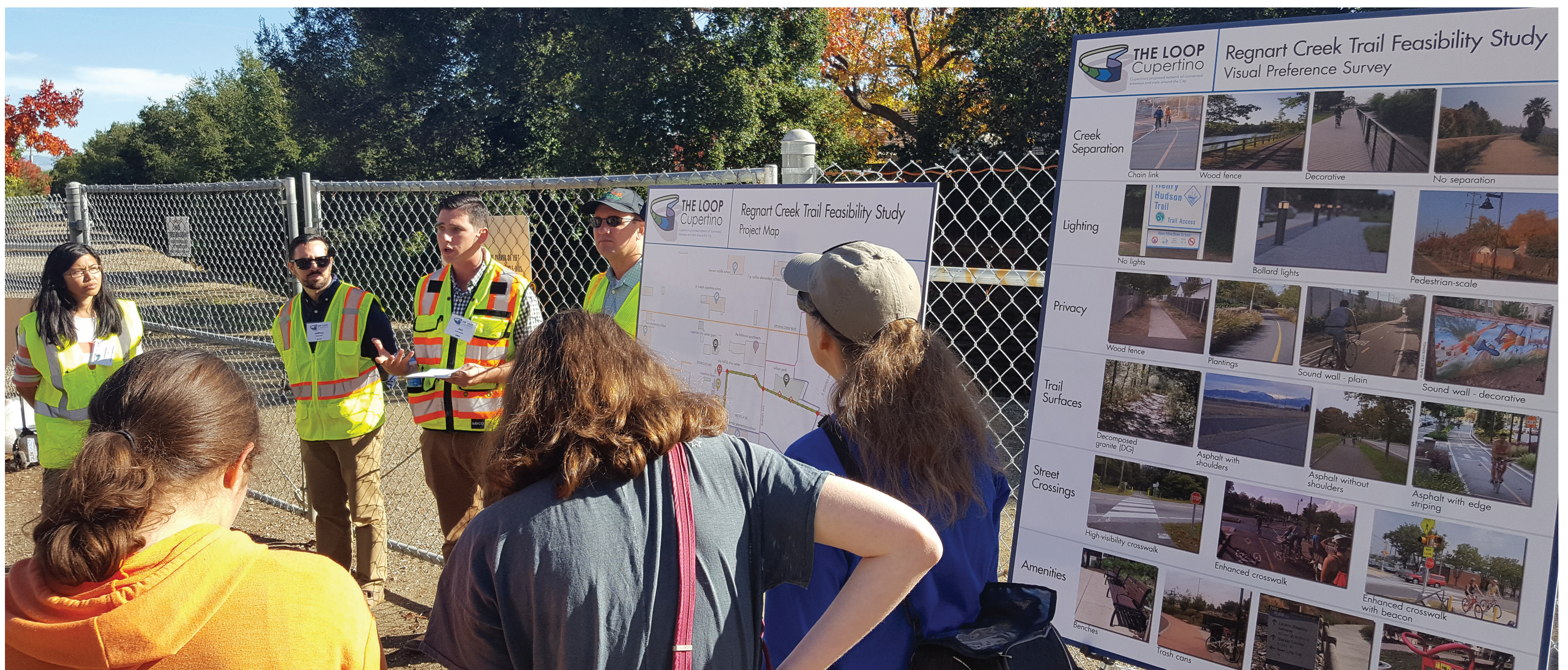
"The crossing at **Blaney** is very problematic from a safety standpoint."

[Would provide] "Safe **dog walking route.**"

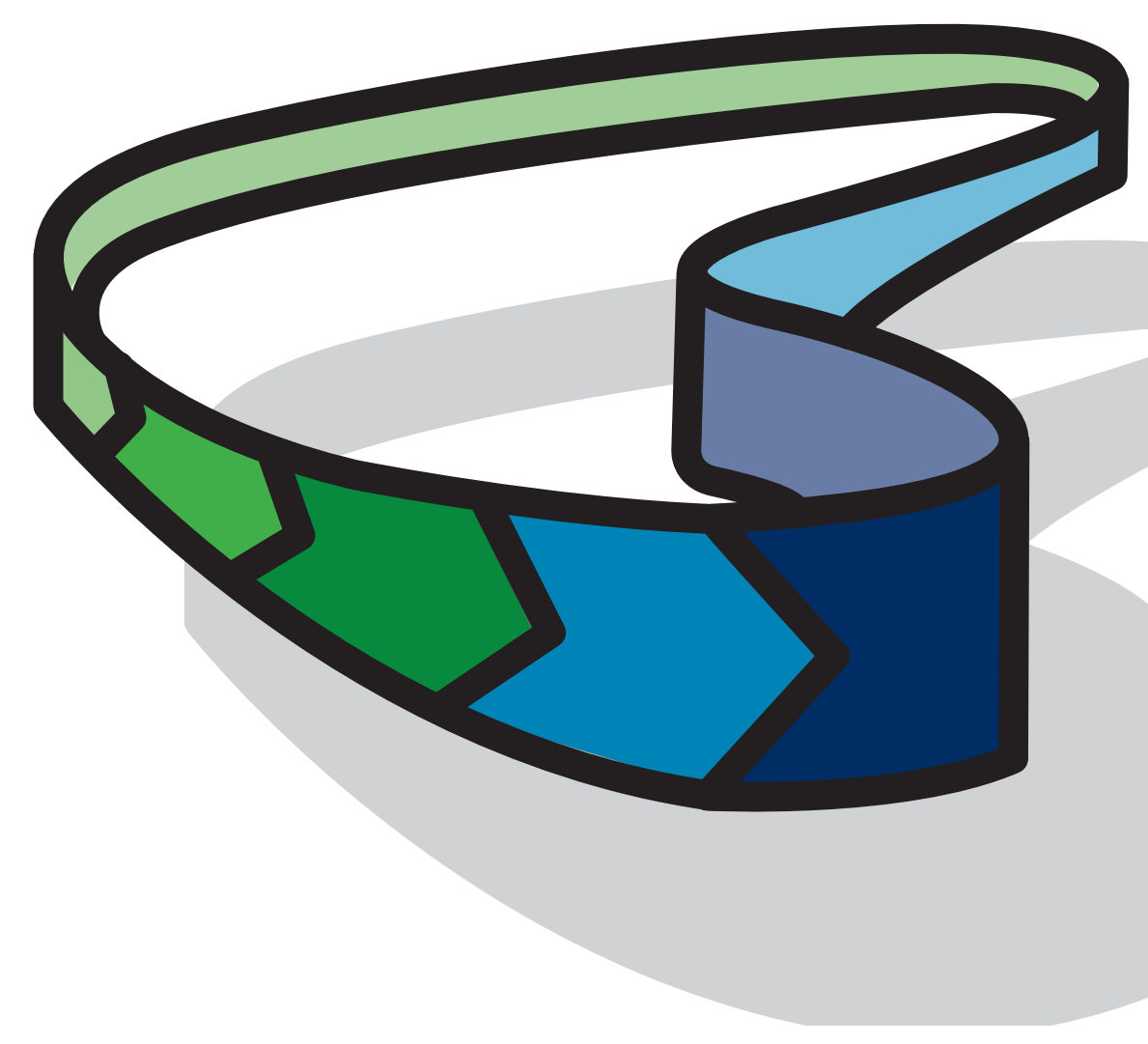
"**Bollard lights** are preferred."

"I am **totally against** this project."

"Double **thumbs up!**"







# THE LOOP Cupertino

Cupertino's proposed network of connected bikeways and trails around the City

# Regnart Creek Trail Feasibility Study Nearby Examples

## Los Gatos Creek Trail

San Jose,  
Los Gatos

10 miles  
long

Open  
during  
daylight  
hours



## Stevens Creek Trail

City of Mountain View – 5 miles long

Open during daylight hours

The trail includes bridges and undercrossings that allow people on the west side of Highway 85 to avoid using El Camino Real to access the neighborhoods, schools, and businesses on the east side of Highway 85.



## San Tomas Aquino Creek Trail

Santa Clara

8 miles long

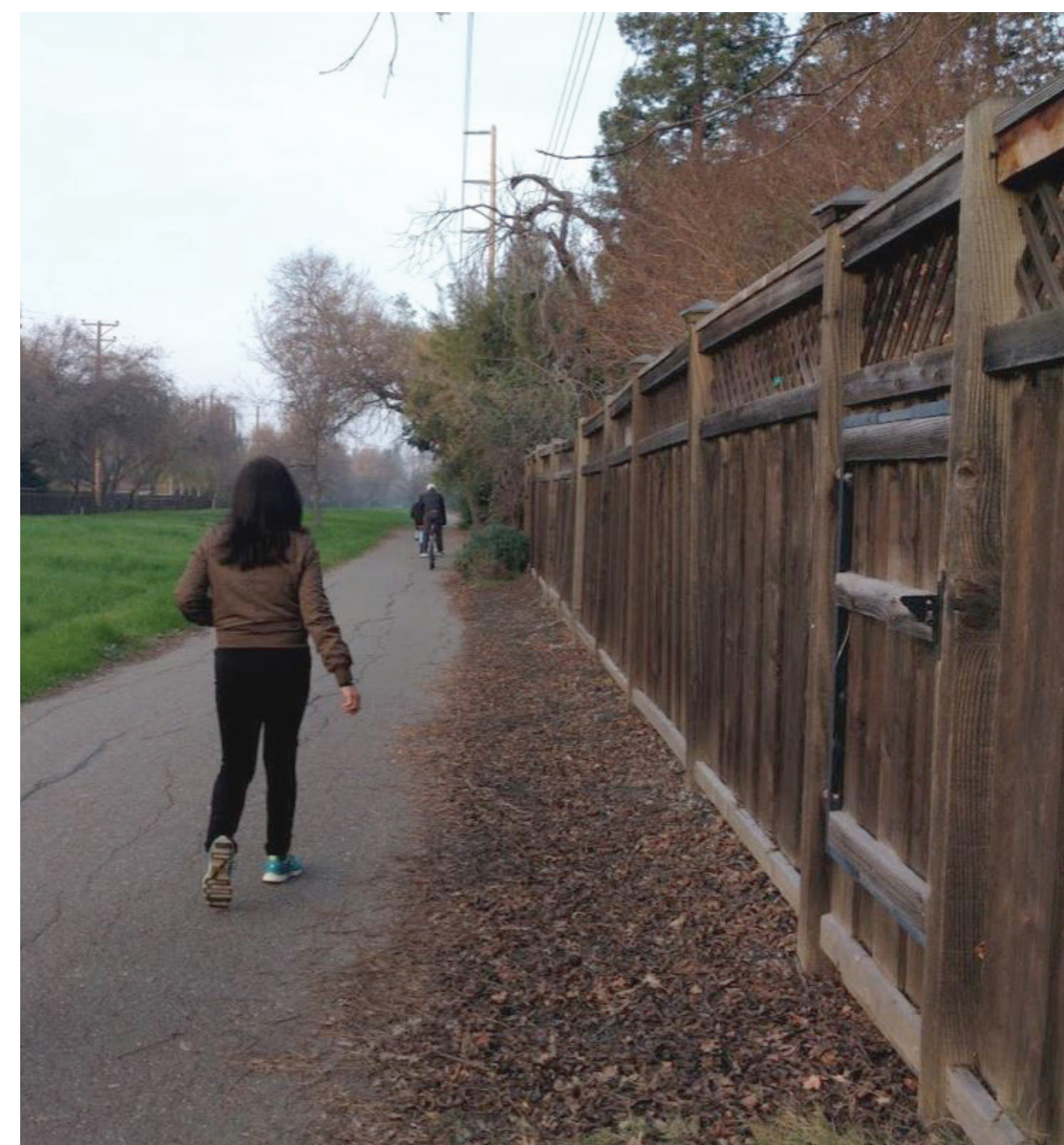
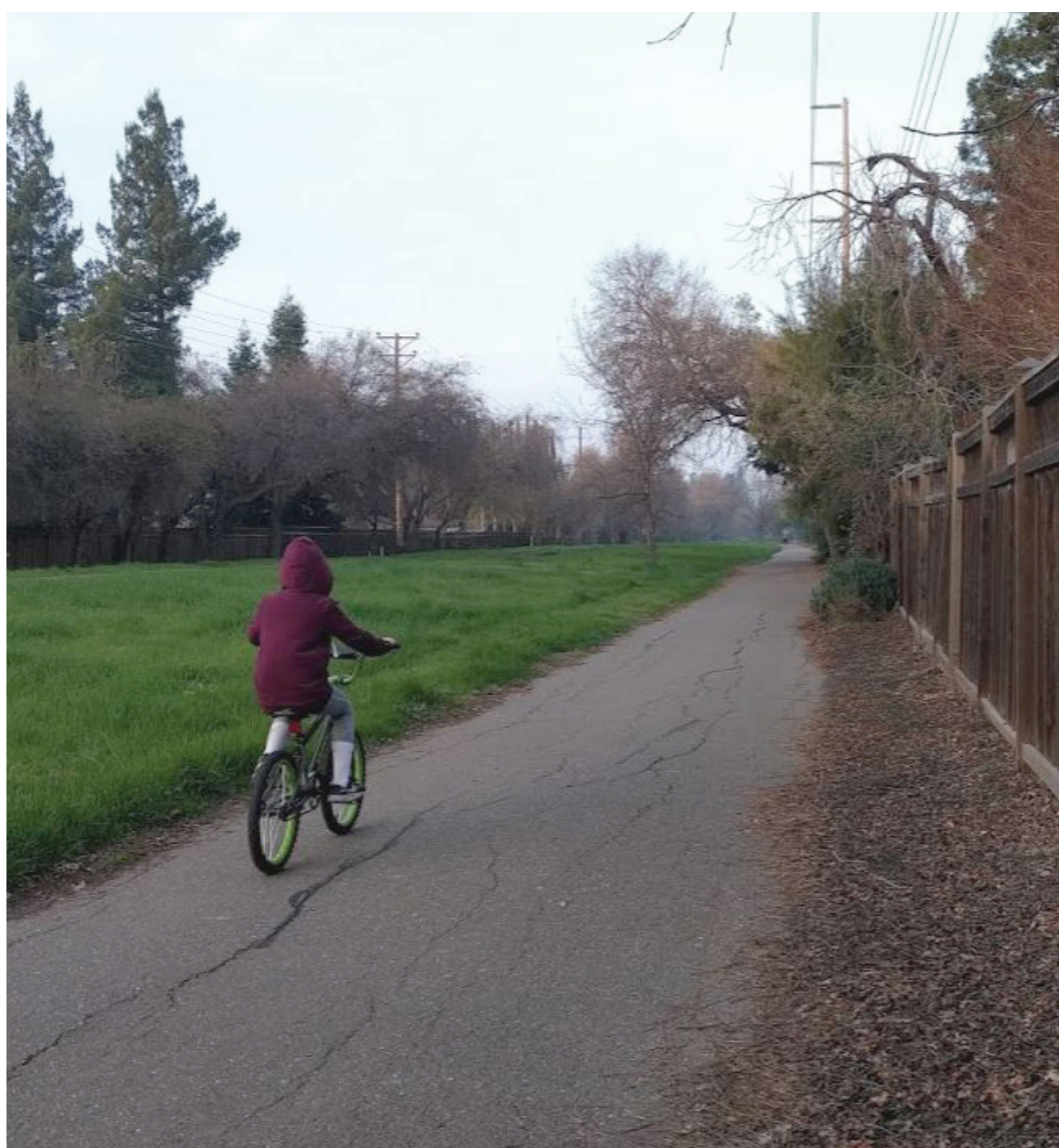
Open during  
daylight hours



## Iron Horse Regional Trail

Connecting seven communities between Concord  
and Pleasanton – 32 miles long

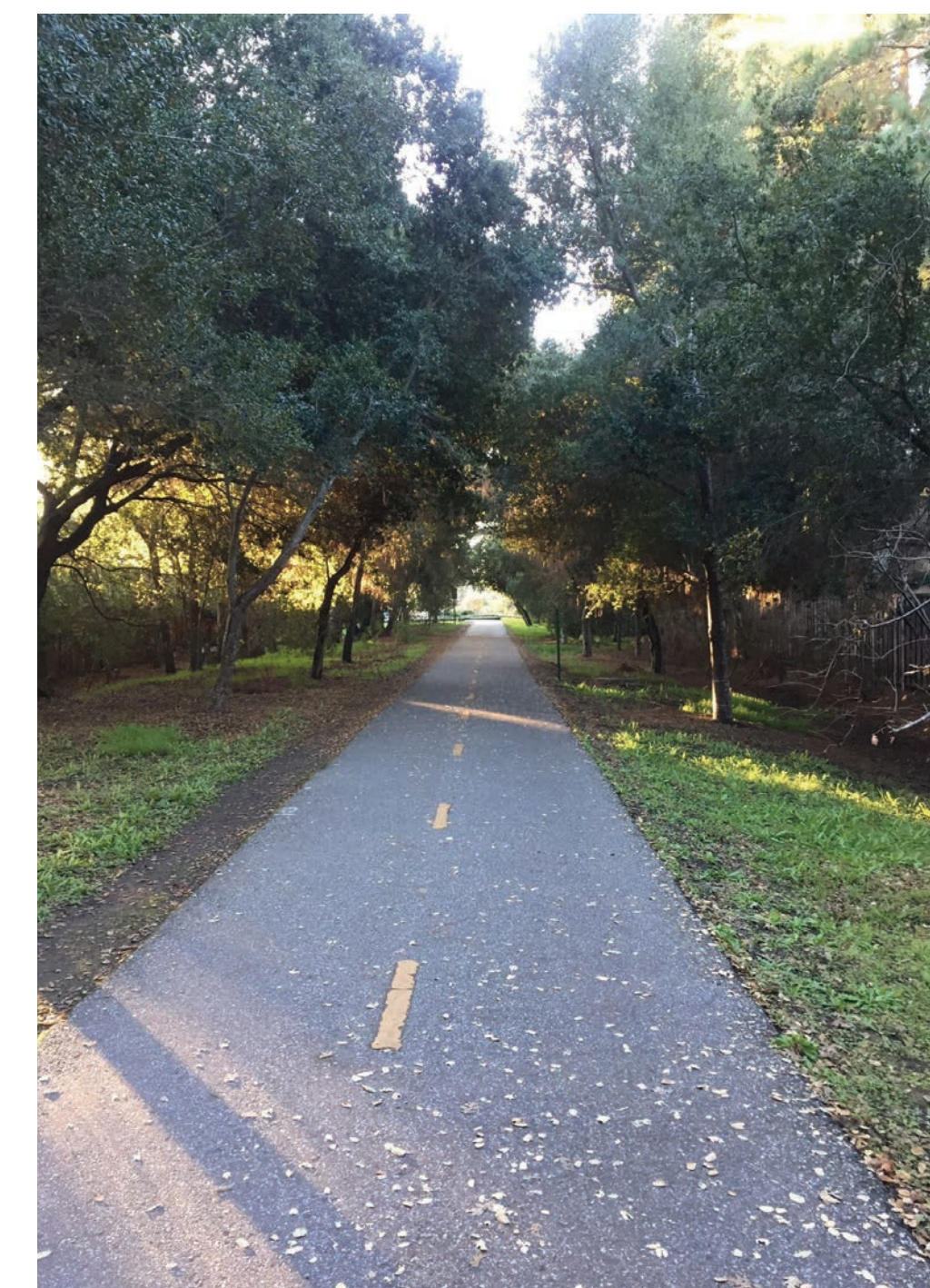
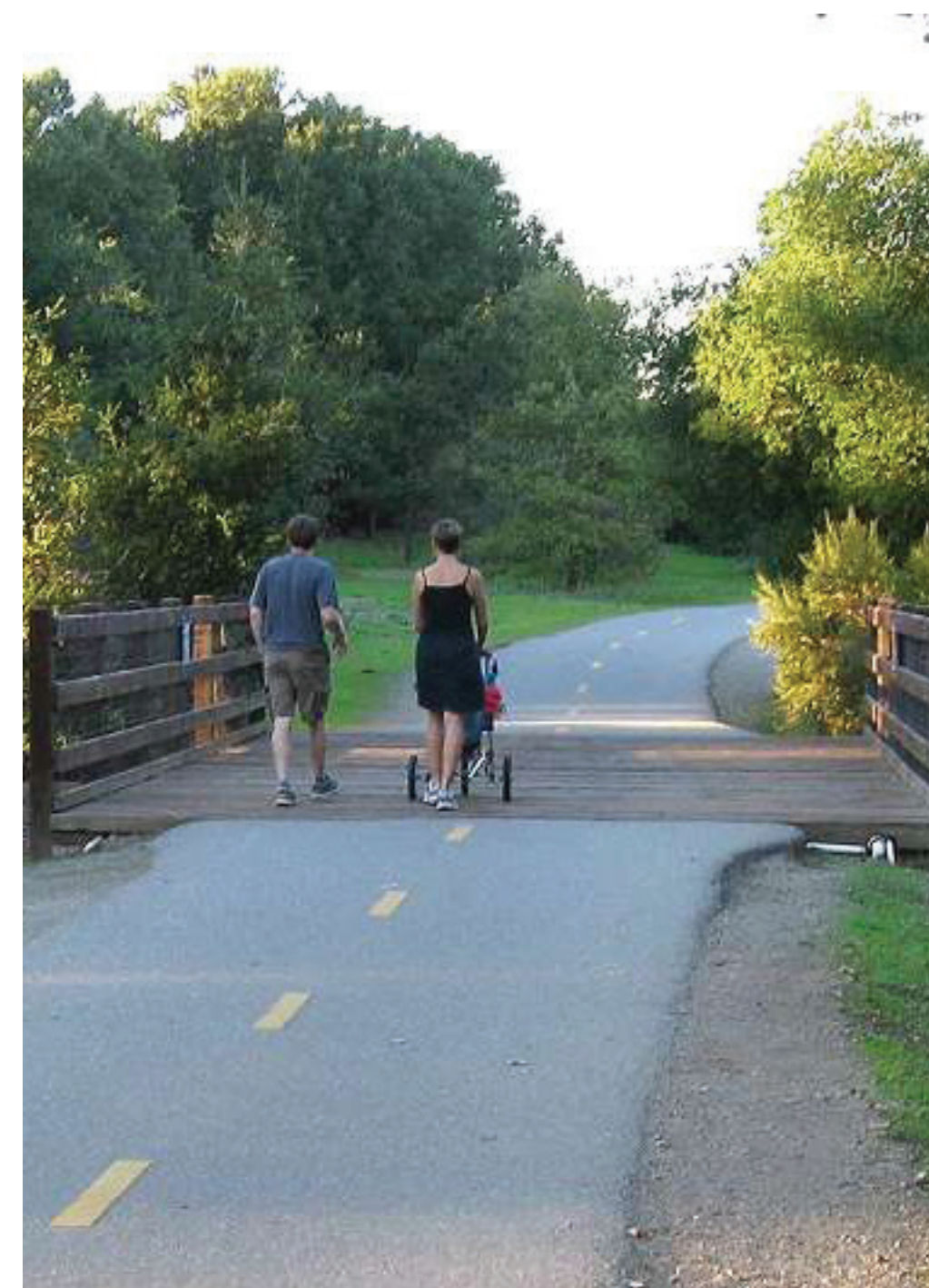
Open between 5 a.m. and 10 p.m.



## Bol Park Bike Path

Palo Alto

2.7 miles long



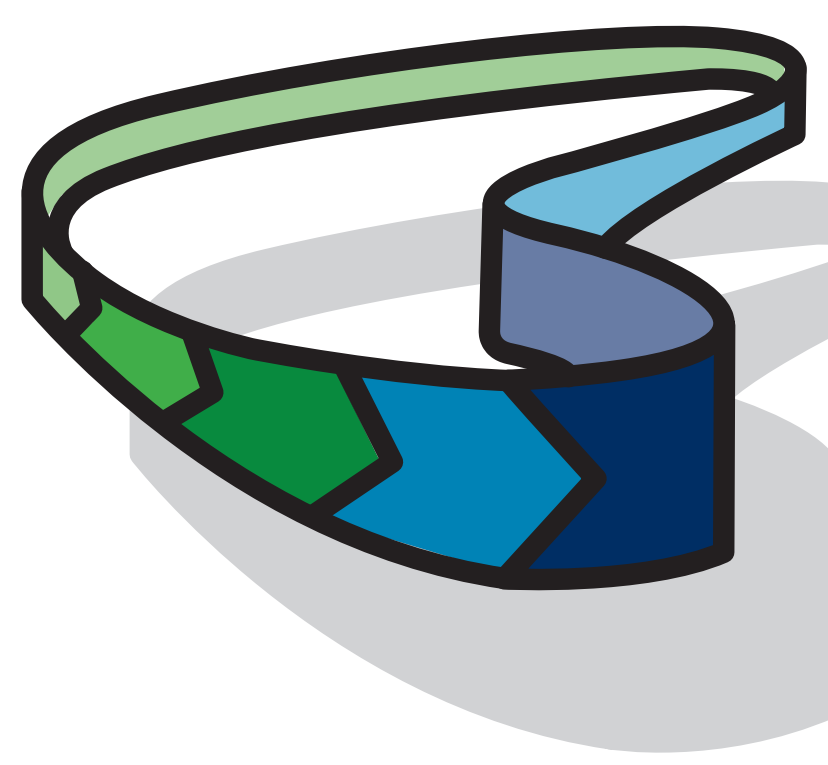
## Guadalupe River Trail

San Jose – 11 miles long total

Open during daylight hours







**THE LOOP**  
Cupertino  
Cupertino's proposed network of connected  
bikeways and trails around the City

# Regnart Creek Trail Feasibility Study

## **Vote!**

If a trail were built along Regnart Creek,  
would you or your family use it?



Not Sure/I Need  
More Information

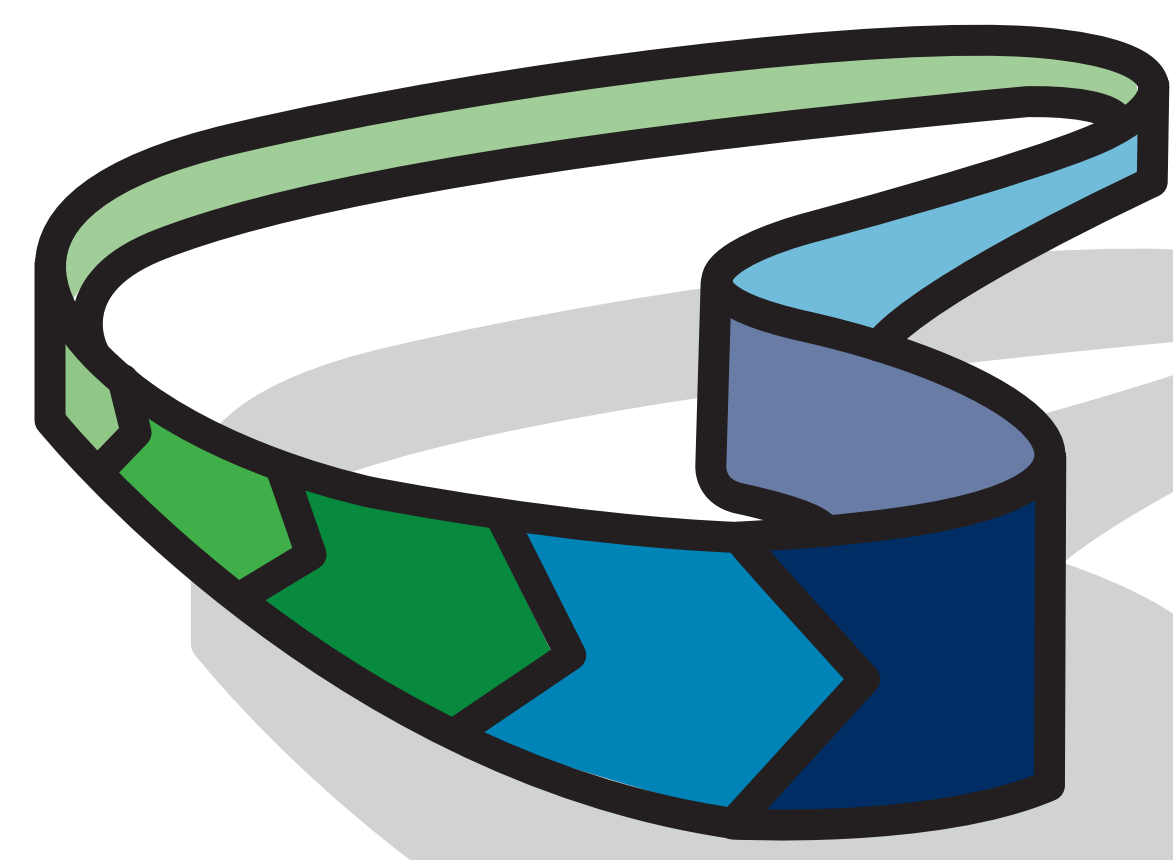
---

Tell us your vision for this corridor.

What are your **ideas**?

What are your **concerns**?

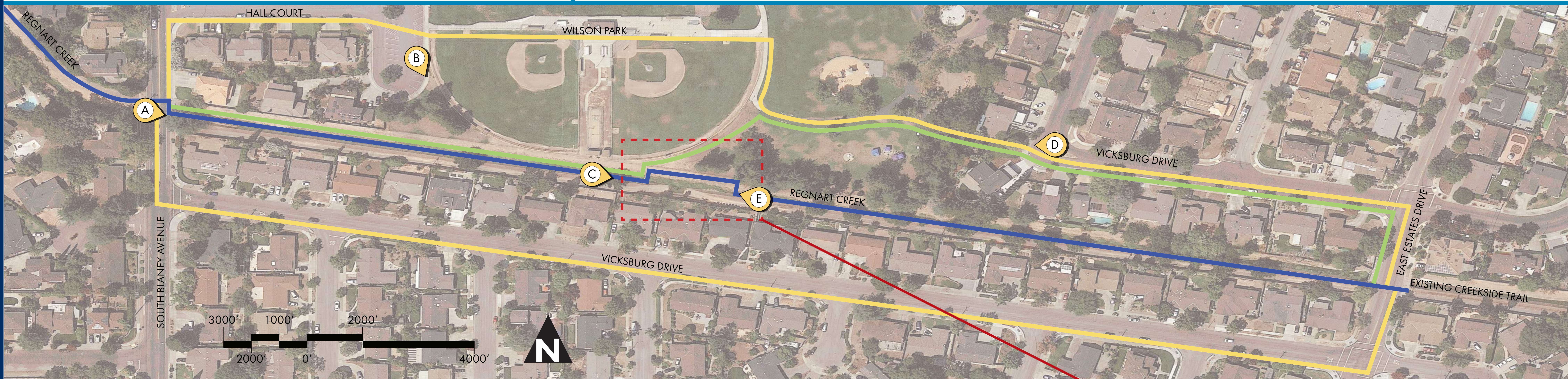




# THE LOOP Cupertino

Cupertino's proposed network of connected bikeways and trails around the City

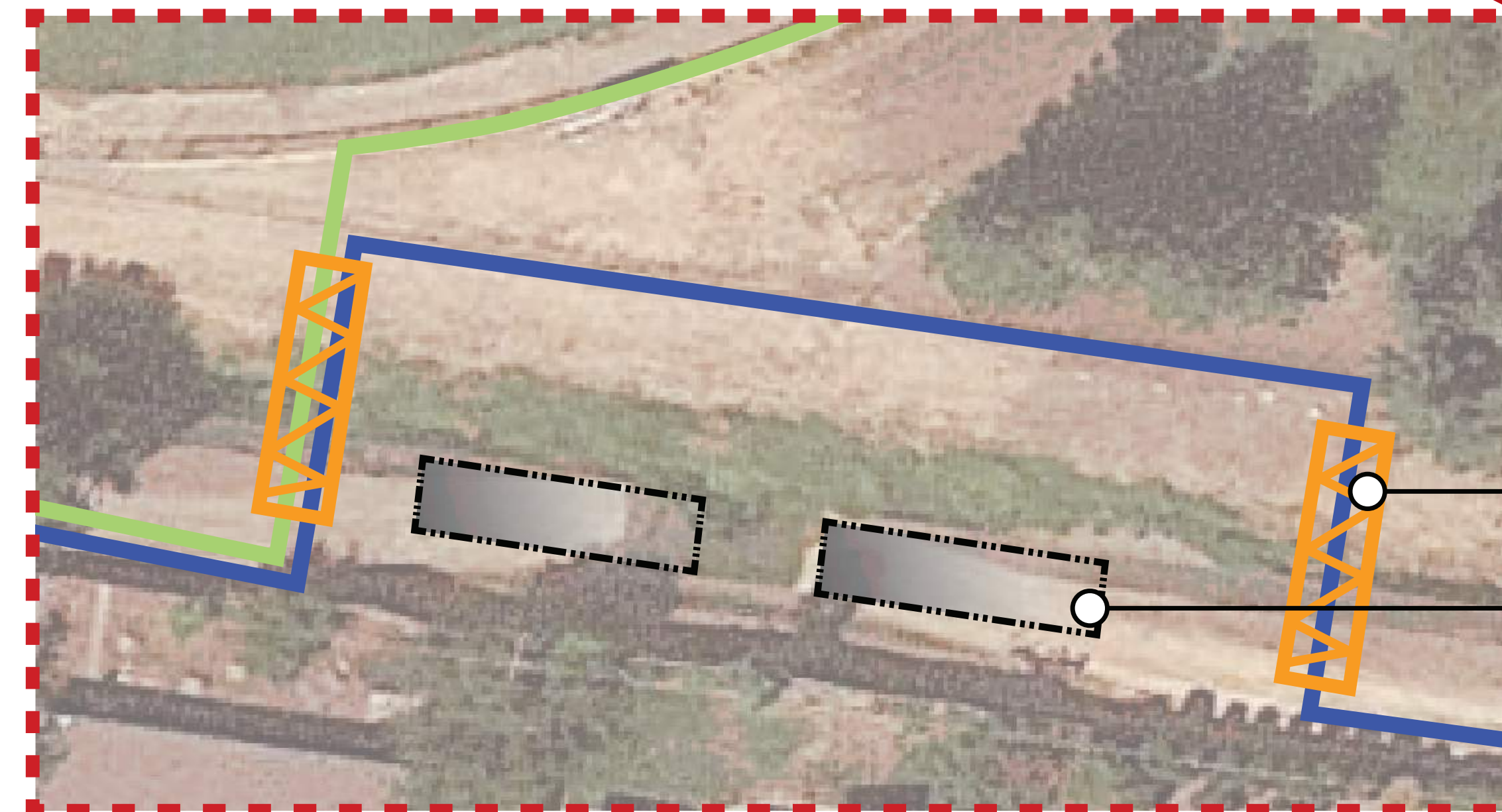
## Regnart Creek Trail Feasibility Study S. Blaney Ave. to E. Estates Dr. Segment



### PEDESTRIAN BRIDGE EXAMPLES



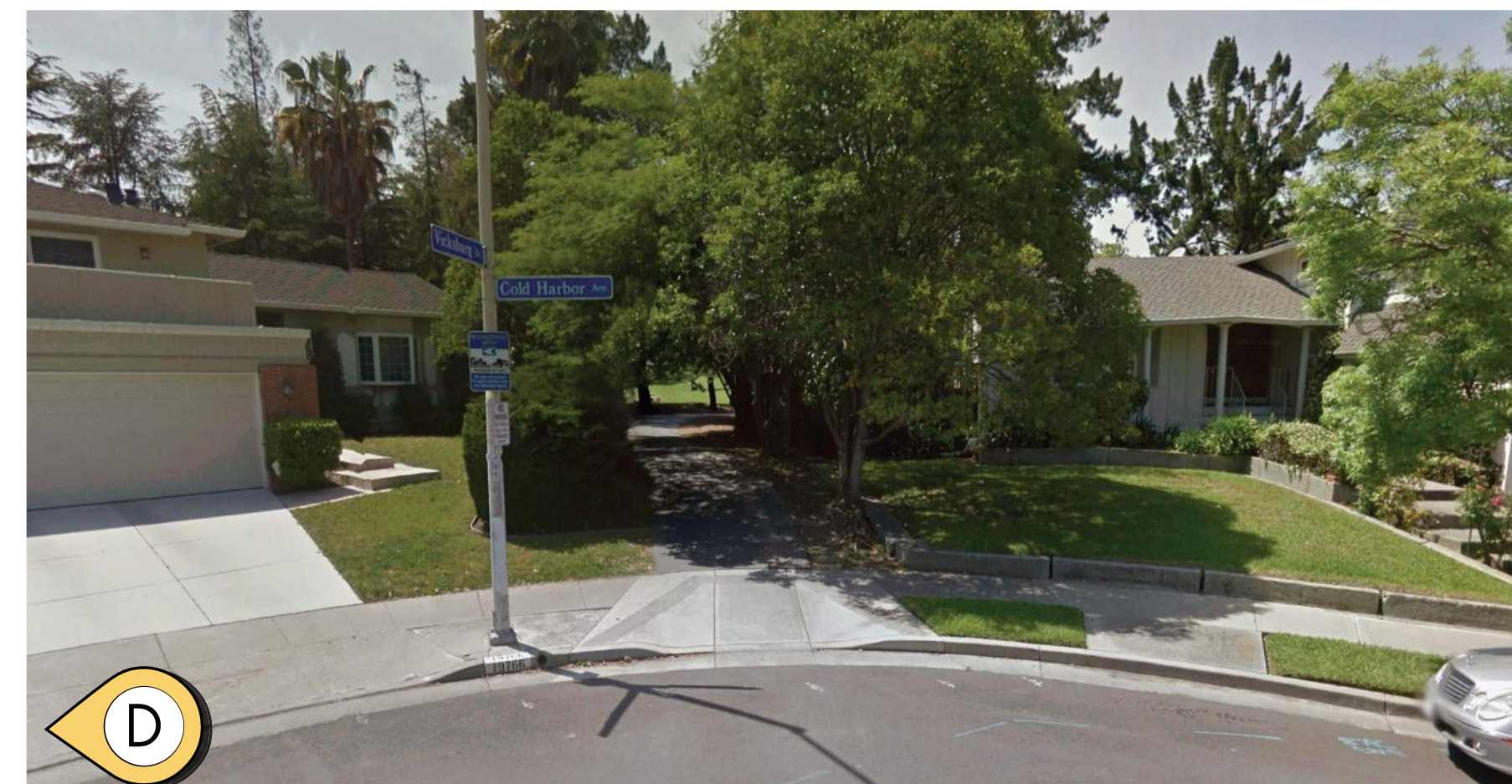
### ACCESS ROAD ENLARGEMENT



### LEGEND

- EXISTING ALTERNATE ROUTES
- PROPOSED TRAIL
- ALTERNATIVE ROUTE

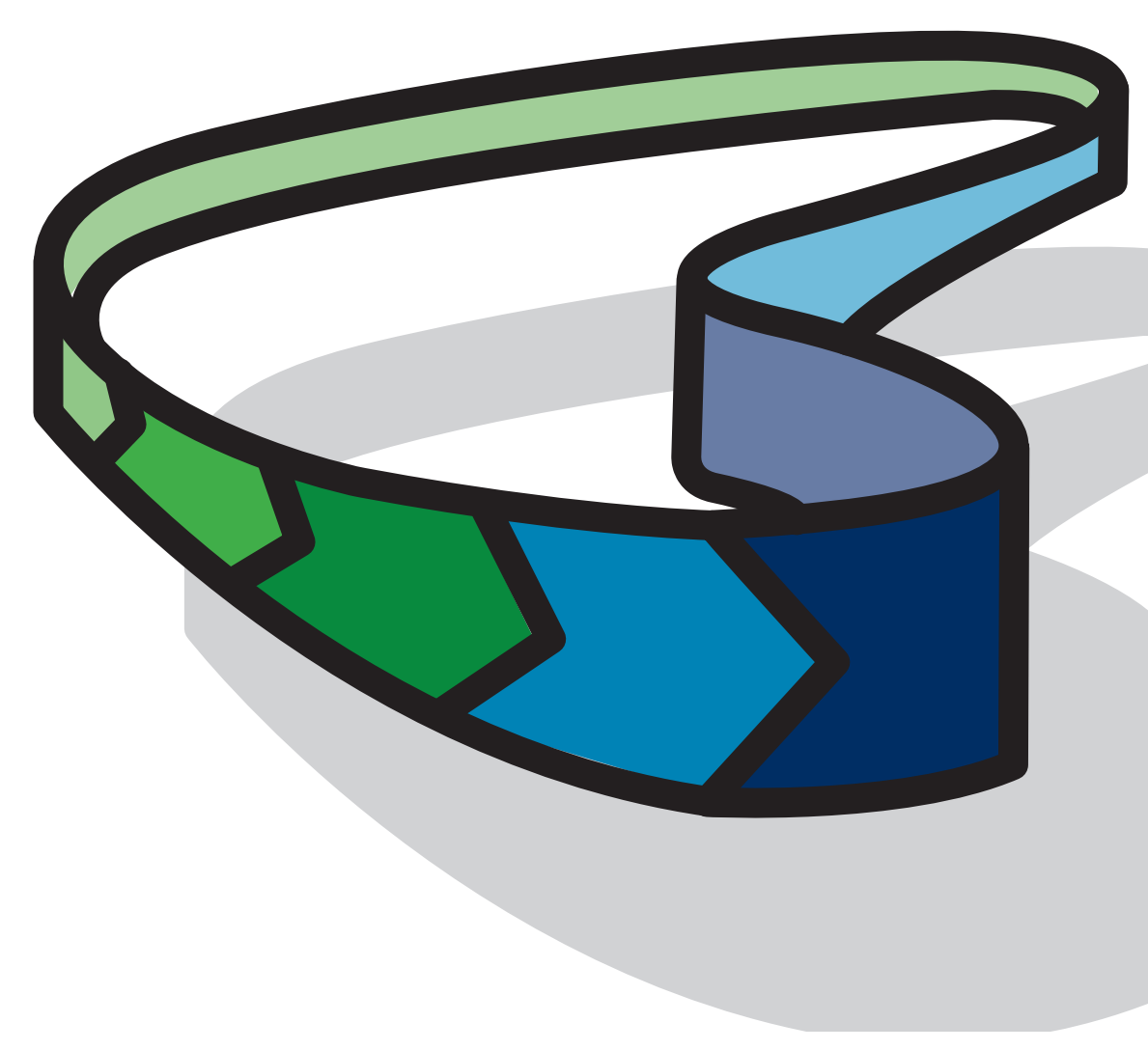
### SITE PHOTOS



### PEDESTRIAN BRIDGE SIMULATION







# THE LOOP Cupertino

Cupertino's proposed network of connected bikeways and trails around the City

## Regnart Creek Trail Feasibility Study Process + Schedule

### 2017

### 2018



EXISTING CONDITIONS  
REVIEW

PUBLIC ENGAGEMENT

CONCEPTUAL DESIGN DEVELOPMENT

PUBLIC  
ENGAGEMENT

REFINEMENT OF  
DESIGNS

EVALUATION OF  
DESIGNS

PUBLIC  
ENGAGEMENT

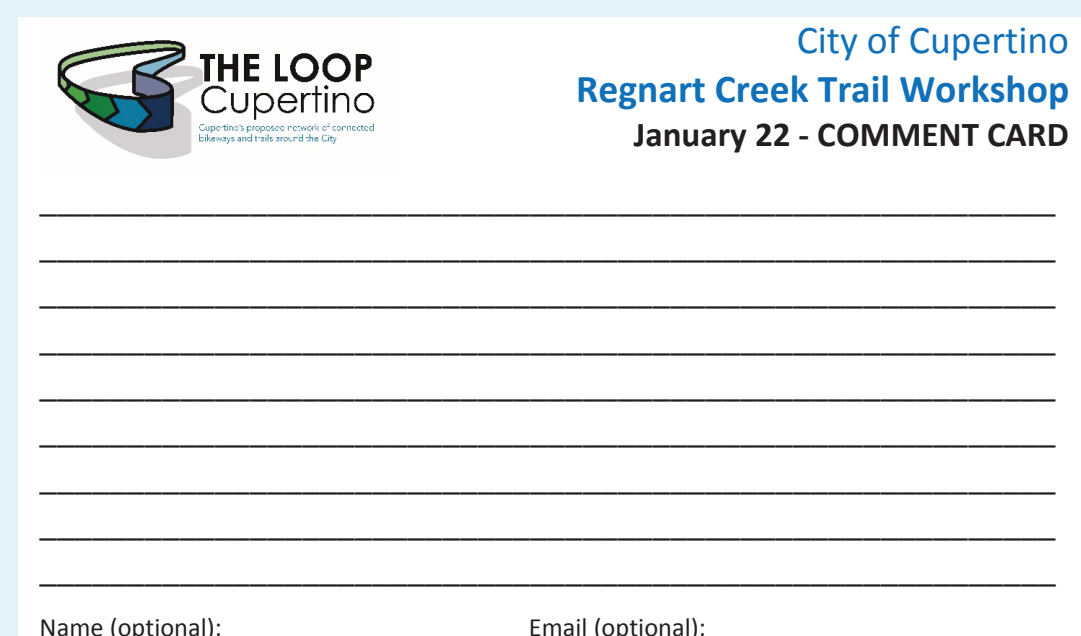
PREPARATION OF  
FEASIBILITY STUDY

COUNCIL ACTION

### HOW TO PROVIDE INPUT

City staff welcomes ongoing feedback at any time throughout the project by one of the following methods:

- Fill out our comment cards at our workshops



- E-mail: [jenniferc@cupertino.org](mailto:jenniferc@cupertino.org)

- Call: 408.777.3237

### HOW TO STAY UPDATED

- Join our mailing list today!

- Visit the Regnart Creek Trail web page:
  - » Go to [www.cupertino.org/bikeplan](http://www.cupertino.org/bikeplan)
  - » Scroll down and click on [Regnart Creek Trail](#)