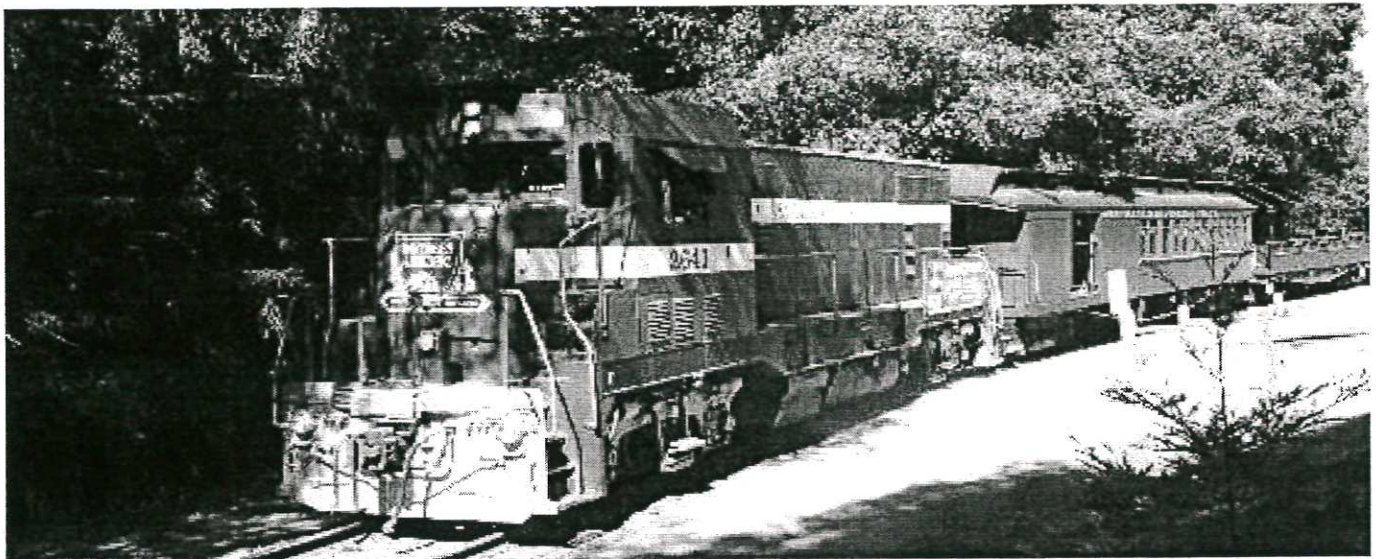


Share Discovery Through Travel

From the Mountains to the Sea:



Scenic Santa Cruz Beach Train and Seymour Marine Discovery Center

Wednesday, June 20, 8:45am-5pm

Experience a day that is uniquely Californian, as we travel and explore from the wilds of the Santa Cruz Mountains to the Pacific Coast.

The Santa Cruz Big Trees & Pacific Railway operates passenger and freight services on one of the oldest and most historic line in California. Today, you can enjoy the fresh air of the Santa Cruz Mountains on a scenic open-air train ride through Henry Cowell Redwoods State Park and down the striking San Lorenzo River Gorge before arriving at the famous beaches of Santa Cruz.

There's much more --Turn the page for details!



CUPERTINO

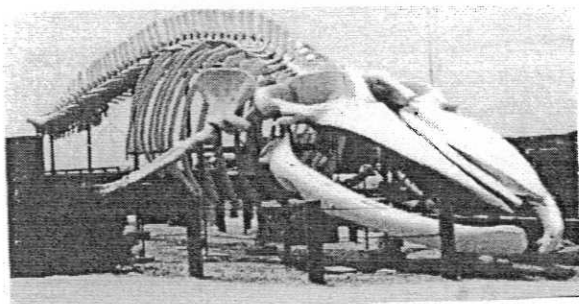
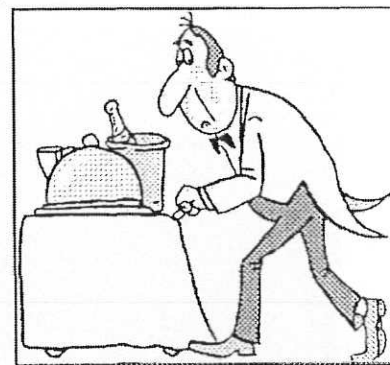
City of Cupertino
Recreation and Community Services Department
Creating a Positive, Healthy, and Connected Community

From the Mountains to the Sea:

Scenic Santa Cruz Beach Train and Seymour Marine Discovery Center

Wednesday, June 20, 8:45am-5pm

A delicious lunch awaits you at The Crow's Nest, a Santa Cruz staple since 1969. Enjoy a choice of chicken breast marsala, spice-rubbed top sirloin, seafood thermidor, or butternut squash ravioli. Finish lunch with a delectable dessert of chocolate mousse pie.



Come touch a friendly shark, see how marine scientists work, and take in the spectacular Monterey Bay at the Seymour Marine Discovery Center. Our 45-minute, docent-led tour will offer a deeper dive into the adventure of ocean research in Santa Cruz and around the world, including the enormous "Ms. Blue" --at 87-feet long, she's one of the world's biggest whale skeletons!

ACTIVITY LEVEL: Low to Moderate; 45-minute walking tour, and boarding and deboarding train for open-air ride to Santa Cruz

COST:
\$139

TRIP INCLUDES: Scenic Train Ride, Docent-led Tour, Delicious Lunch, Transportation, Tips, and Travel Staff

Itinerary is subject to change.

Please plan to arrive at the Cupertino Senior Center 30 minutes prior to trip departure.

samtacruzs.trp 1/28/18

Cupertino Senior Center
21251 Stevens Creek Blvd. Cupertino, CA 95014
Phone: (408) 777-3150 Fax: (408) 777-3156
www.cupertino.org/senior