

CITY OF CUPERTINO
PROJECT NO. 2018-07

CITY OF CUPERTINO

SENIOR CENTER REPAIRS - ACOUSTIC PANEL INSTALLATION

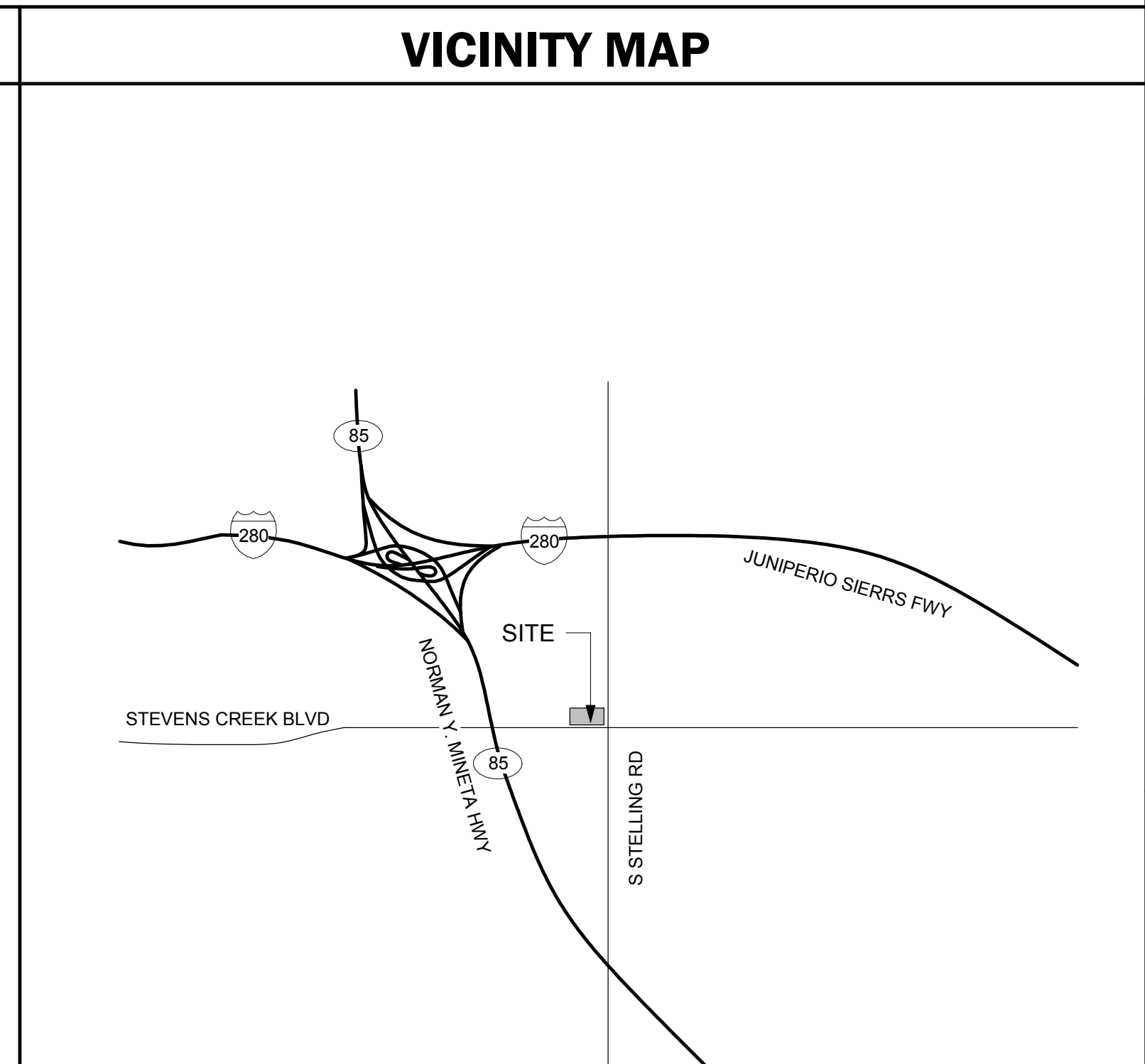
21251 STEVENS CREEK BLVD.,
CUPERTINO, CA

CONSTRUCTION DOCUMENTS

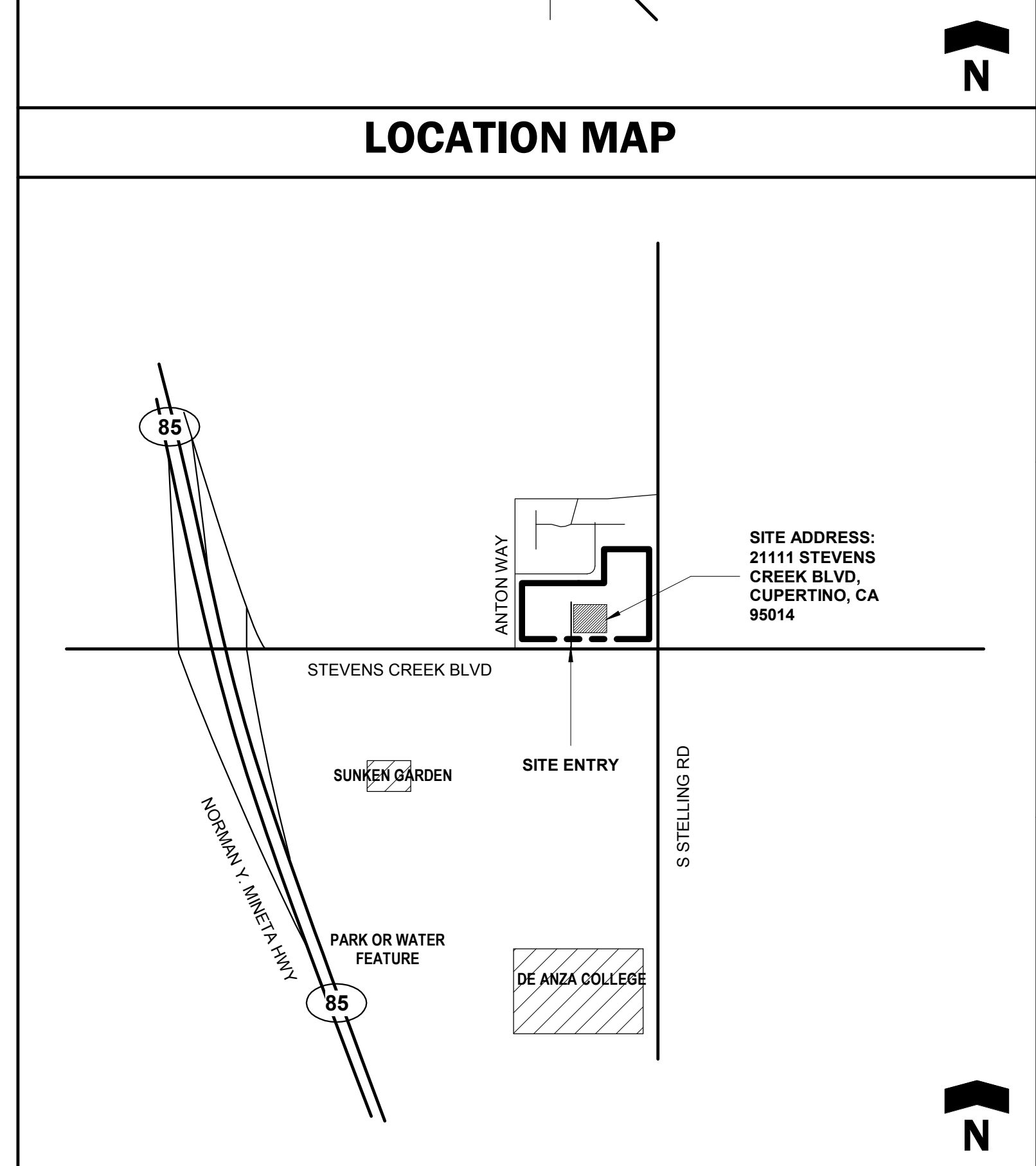
JUNE 28, 2018

DIRECTORY
<p>CITY OF CUPERTINO ALEX ACENAS 10300 TORRE AVENUE CUPERTINO, CA 95014 TEL: (408) 777-3232 CONTACT: ALEXA@CUPERTINO.ORG</p> <p>ARCHITECT PERKINS EASTMAN 1904 FRANKLIN ST., SUITE 909 OAKLAND, CA 94612 TEL: (510) 654-2544 FAX: (510) 654-2546 CONTACT: STEVE PARKER CONTACT: S.PARKER@PERKINSEASTMAN.COM</p>

SHEET INDEX
<p>GENERAL</p> <p>G001 COVER SHEET G002 ABBREVIATIONS, SYMBOLS, AND GENERAL NOTES G003 CONSTRUCTION BEST MANAGEMENT PRACTICES</p> <p>ARCHITECTURE</p> <p>AD101 DEMOLITION ELEVATIONS</p> <p>A101 FIRST FLOOR PLAN A401 INTERIOR ELEVATIONS A501 ACOUSTIC PANEL DETAILS</p>



PROJECT DATA
<p>SCOPE OF WORK REPLACEMENT AND INSTALLATION OF NEW 1" FABRIC-WRAPPED ACOUSTIC WALL PANELING IN THE RECEPTION HALL.</p> <p>REVIEWED BY: <i>Michael Zimmerman</i> MICHAEL ZIMMERMAN, CAPITOL IMPROVEMENT PROGRAM MANAGER June 29, 2018 DATE</p> <p>APPROVED BY: <i>Tim Borden</i> TIMM BORDEN, DIRECTOR OF PUBLIC WORKS June 29, 2018 DATE</p>



SENIOR CENTER REPAIRS - ACOUSTIC PANEL INSTALLATION
CITY OF CUPERTINO
21251 STEVENS CREEK BLVD.,
CUPERTINO, CA

JOB	21828.00
SCALE	AS NOTED
PM	SP
DATE	JUNE 28, 2018

COVER SHEET

**PERKINS
— EASTMAN
Dougherty**
1904 Franklin Avenue, Suite 909
Oakland CA 94612
T. +1 510 654 2544
www.perkinseastman.com

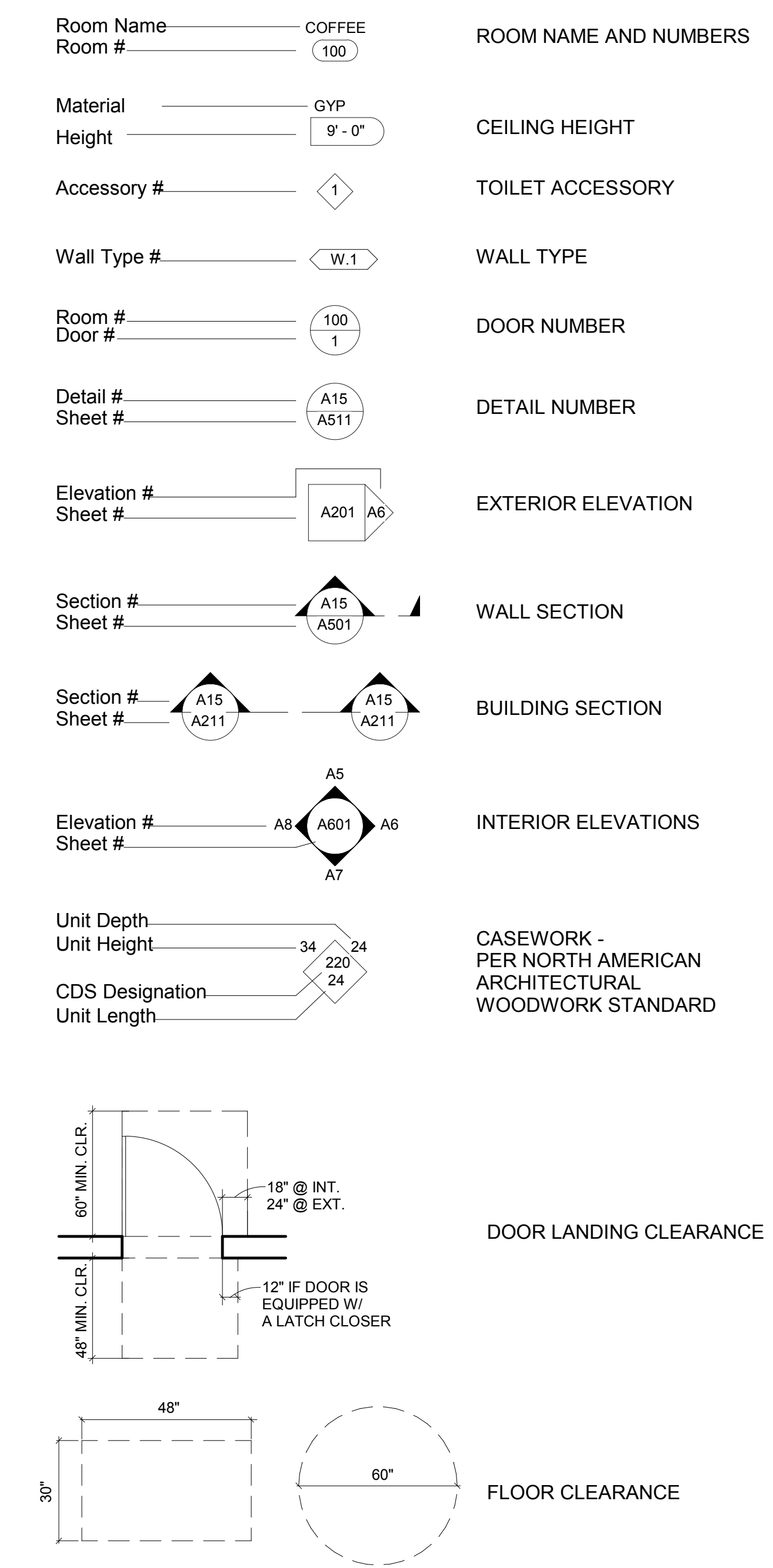
G001

ABBREVIATIONS

FOR ADDITIONAL ABBREVIATIONS, SEE OTHER DISCIPLINE SHEETS. ABBREVIATIONS MAY VARY BETWEEN DISCIPLINES.

@	AT CENTERLINE	MAX. MECH. MFR.	MAXIMUM MECHANICAL MANUFACTURER
A.F.F.	ABOVE FINISH FLOOR	MIN. MISC. M.O.	MINIMUM MISCELLANEOUS MASONRY OPENING
A.C.	ASPHALTIC CONCRETE	NO./# N.T.S.	NUMBER NOT TO SCALE
ALUM.	ALUMINUM	O.C.	ON CENTER
APPROX. ARCH.	APPROXIMATELY ARCHITECT	O.F.C.I.	OWNER FURNISHED CONTRACTOR
BLDG.	BUILDING	O.F.O.I	OWNER FURNISHED OWNER INSTALLED
C.J.	CONTROL JOINT	O.H.	OPPOSITE HAND
CL.G.	CEILING	O.L.F.	OCCUPANT LOAD FACTOR
CONC.	CONCRETE	P.H.	PANIC HARDWARE
C.M.U.	CONCRETE MASONRY UNITS	P.L.	PROPERTY LINE
CONT.	CONTINUOUS	R.	STAIR RISER
D.G.	DECOMPOSED GRANITE	RAD.	RADIUS
DIA.	DIAMETER	REF.	REFRIGERATOR
DN.	DOWN	REQ'D.	REQUIRED
D.F.	DRINKING FOUNTAIN	RM.	ROOM
D.S.	DOWNSPOUT	R.O.	ROUGH OPENING
DWG.	DRAWING	SF	SQUARE FEET
(E)	EXISTING	SIM.	SIMILAR
E.A.	EACH	SPEC.	SPECIFICATIONS
E.J.	EXPANSION JOINT	S.S.	STAINLESS STEEL OR SERVICE SINK
ELEC.	ELECTRIC	STRUCT.	STRUCTURAL
ELEV.	ELEVATOR	SYM.	SYMMETRICAL
EQ.	EQUAL	T.	STAIR TREAD
EQUIP.	EQUIPMENT	T. & G.	TONGUE AND GROOVE
EXT.	EXTERIOR	T.O.C.	TOP OF CURB
F.D.	FLOOR DRAIN	T.O.D.	TOP OF DECK
F.E.	FIRE EXTINGUISHER (WALL HUNG)	T.O.P.	TOP OF PARAPET
F.E.C.	FIRE EXTINGUISHER AND CABINET	T.O.S.	TOP OF STEEL
F.F.	FINISH FLOOR	T.O.W.	TOP OF WALL
F.O.C.	FACE OF CONCRETE	TEMP.	TEMPORARY
F.O.M.	FACE OF MASONRY	TYP.	TYPICAL
F.O.S.	FACE OF STUD	U.N.O.	UNLESS NOTED OTHERWISE
F.R.P.	FIBERGLASS REINFORCED PLASTIC	U.O.N.	UNLESS OTHERWISE NOTED
F.S.	FLOOR SINK	U.	URINAL
F.V.	FIELD VERIFY	V.C.T.	VINYL COMPOSITION TILE
FT.	FOOT OR FEET	V.I.F.	VERIFY IN FIELD
		VERT.	VERTICAL
GA.	GAUGE OR GAGE	W/	WITH
GALV.	GALVANIZE	W.C.	WATER CLOSET
GYP.	GYPSUM		
H.M.	HOLLOW METAL		
HORIZ.	HORIZONTAL		
HT.	HEIGHT		
INT.	INTERIOR		
LAB.	LABORATORY		
LAM. PLAS.	LAMINATED PLASTIC		
LAV.	LAVATORY		

SYMBOLS



GENERAL NOTES

1. VERIFY DIMENSIONS, LOCATIONS OF EXISTING UTILITIES, AND CONDITIONS ON THE JOB SITE PRIOR TO THE START OF WORK OR PORTIONS OF THE WORK. NOTIFY THE ARCHITECT IMMEDIATELY OF ANY DISCREPANCIES BETWEEN THE ACTUAL FIELD CONDITIONS AND THE CONSTRUCTION DOCUMENTS. EXISTING CONDITIONS ARE INDICATED AS A RESULT OF FIELD OBSERVATIONS, INFORMATION SHOWN ON AVAILABLE DOCUMENTS AND FIELD CONDITIONS AT THE TIME OF PREPARATION, AND ARE NOT GUARANTEED TO BE ACCURATE.
2. MATERIALS AND WORKMANSHIP SHALL COMPLY WITH GOVERNING CODES, ORDINANCES, REGULATIONS AND LAWS.
3. WHERE CONFLICT OCCURS BETWEEN THE REQUIREMENTS OF LAWS, CODES, ORDINANCES, RULES AND REGULATIONS, THE MOST STRINGENT SHALL GOVERN.
4. DIMENSIONS SHOWN ON DRAWINGS SUPERSEDE SCALED DIMENSIONS.
5. DETAILS MARKED 'TYPICAL' SHALL APPLY IN SIMILAR CASES.
6. WHERE NO SPECIFIC DETAIL IS SHOWN, THE FRAMING OR CONSTRUCTION SHALL BE IDENTICAL OR SIMILAR TO THAT INDICATED FOR LIKE CASES OF CONSTRUCTION OR PER COMMON INDUSTRY PRACTICE IF THERE ARE NO LIKE CASES.
7. PRIOR TO THE START OF WORK COORDINATE THE REQUIREMENTS OF THE TRADES INDICATED HEREIN AND THE REQUIREMENTS OF THE DRAWINGS AND SPECIFICATIONS.
8. IT IS THE CONTRACTOR'S RESPONSIBILITY TO SUBDIVIDE THE WORK.
9. THE INTENT OF THESE DRAWINGS AND SPECIFICATIONS IS THAT THE WORK BE IN ACCORDANCE WITH TITLE 24, CALIFORNIA CODE OF REGULATIONS. SHOULD EXISTING CONDITIONS SUCH AS DETERIORATION OR NON COMPLYING CONSTRUCTION BE DISCOVERED WHICH IS NOT COVERED BY THE CONTRACT DOCUMENTS WHEREIN THE NEW WORK WILL NOT COMPLY WITH TITLE 24, CALIFORNIA CODE OF REGULATIONS, NOTIFY THE OWNER AND MAKE CORRECTIONS REQUIRED TO BRING THE NEW WORK INTO COMPLIANCE WITH THE CODE.
10. CHANGES TO THE APPROVED DRAWINGS AND SPECIFICATIONS SHALL BE MADE BY A WRITTEN CHANGE ORDER AND IF REQUIRED BY STATUTE, APPROVED BY THE AGENCY HAVING JURISDICTION, IN COMPLIANCE WITH THE GOVERNING CODES.
11. PROVIDE THE OWNER, THE OWNER'S REPRESENTATIVE, AND THE PROJECT INSPECTOR FULL ACCESS TO THE SITE AT ALL TIMES.
12. DIMENSIONS ARE TO GRID LINES, FACE OF CONCRETE, FACE OF CONCRETE MASONRY UNITS, AND FACE OF STUDS, UNLESS NOTED OTHERWISE.
13. WHERE CONFLICTS OCCUR IN THE DOCUMENTS, BID THE MORE EXPENSIVE ITEM.
14. SAFEGAURDS DURING DEMOLITION AND CONSTRUCTION SHALL COMPLY WITH CBC CHAPTER 33 AND CFC CHAPTER 33.

MODERNIZATION NOTES

1. CONSTRUCTION ACTIVITIES SHALL BE CONTAINED WITHIN FENCED OR BARRICADED AREAS. CONSTRUCTION ACTIVITIES THAT GENERATE DISRUPTIVE NOISE, ODORS, AND DUST TO BE SCHEDULED TO MINIMIZE DISRUPTION TO OCCUPANTS AT THE SITE AND NEIGHBORING PROPERTY. MODIFY THE PROJECT SCHEDULE AT THE OWNER'S REQUEST WHEN DISRUPTIONS CANNOT BE AVOIDED.
2. BUILDINGS UNDERGOING ALTERATION OR DEMOLITION SHALL BE IN ACCORDANCE WITH CFC CHAPTER 33 AND CBC CHAPTER 33. MAINTAIN EXISTING FIRE ALARM SYSTEM UNTIL THE NEW SYSTEM OR SYSTEM MODIFICATIONS ARE FUNCTIONAL.
3. WHERE ITEMS ARE CUT, DEMOLISHED OR REMOVED, PATCH SURFACES AFFECTED TO MATCH ADJACENT SURFACES. MATCH MATERIAL, TEXTURE, AND PATTERN. REMOVE FASTENERS AND ANCHORS AND PATCH HOLES.
4. WHERE ITEMS ARE CUT, REMOVED OR DEMOLISHED AND PAINTING OR FINISHING IS REQUIRED TO MATCH ADJACENT SURFACES, PAINT OR FINISH THE ENTIRE PLANE OF THE REPAIR.
5. THESE DRAWINGS DO NOT SHOW MATERIALS TO BE REMOVED AND REINSTALLED IN ORDER TO INSTALL NEW WORK. THE EXTENT OF REMOVAL AND REINSTALLATION IS TO BE DETERMINED BY THE CONTRACTOR AND IS NOT CONSIDERED DEMOLITION. REINSTALL MATERIALS PER THE DEMOLISHED ITEMS' NOTES ABOVE.
6. REMOVE, DEMOLISH OR DISPOSE MEANS REMOVE FROM THE SITE AND DISPOSE IN A LEGAL FASHION.

APPLICABLE CODES & STANDARDS

- GENERAL CODES & STANDARDS**
- 2016 CA ADMINISTRATIVE CODE TITLE 24 PART 1
 - 2016 CA BUILDING CODE TITLE 24 PART 2 VOLUME 1 AND 2
 - 2016 CA ELECTRICAL CODE TITLE 24 PART 3
 - 2016 CA MECHANICAL CODE TITLE 24 PART 4
 - 2016 CA PLUMBING CODE TITLE 24 PART 5
 - 2016 CA ENERGY CODE TITLE 24 PART 6
 - 2016 CA FIRE CODE TITLE 24 PART 9
 - 2016 CA BUILDING STANDARDS TITLE 24 PART 12
 - TITLE 19 - CCR STATE FIRE MARSHAL REGULATIONS CHANGES
 - NFPA 101 - LIFE SAFETY CODE, 2015
 - AMERICANS WITH DISABILITIES ACT (ADA), TITLE II: ADA STANDARDS FOR ACCESSIBLE DESIGN (APPENDIX A OF 28 CFR PART 36)
- FIRE SPRINKLER**
- NFPA 13 - INSTALLATION OF SPRINKLER SYSTEMS 2013 EDITION
 - NFPA 14 - INSTALLATION OF STANDPIPE SYSTEMS, PRIVATE HYDRANT AND HOSE SYSTEMS 2016 EDITION
 - NFPA 24 - INSTALLATION OF PRIVATE FIRE SERVICE MAINS AND THEIR APPURTENANCES 2016 EDITION
 - NFPA 25 - INSPECTION, TESTING, MAINTENANCE OF WATER-BASED FIRE PROTECTION SYSTEMS 2017 EDITION
- FIRE ALARM**
- NFPA 72 - NATIONAL FIRE ALARM CODE (CA AMENDED) 2016 EDITION



SENIOR CENTER REPAIRS - ACOUSTIC PANEL INSTALLATION
 CITY OF CUPERTINO
 21251 STEVENS CREEK BLVD.,
 CUPERTINO, CA

JOB	21828.00
SCALE	AS NOTED
PM	SP
DATE	JUNE 28, 2018

ABBREVIATIONS, SYMBOLS,
 AND GENERAL NOTES

PERKINS
— EASTMAN
Dougherty
 1904 Franklin Avenue, Suite 909
 Oakland CA 94612
 T. +1 510 654 2544
 www.perkinseastman.com

G002

1 2 3 4 5 6 7 8 9 10

M L K J H G F E D C B A

In the Santa Clara Valley, storm drains flow directly to our local creeks, and on to San Francisco Bay, with no treatment.

Storm water pollution is a serious problem for wildlife dependent on our waterways and for the people who live near polluted streams or bays.

Proper management of construction sites reduces pollution significantly.

This sheet summarizes the "Best Management Practices" (BMPs) for storm water pollution prevention.

ORDINANCE OF THE CITY OF CUPERTINO FOR STORM WATER POLLUTION PREVENTION & WATERCOURSE PROTECTION: Chapter 9.18

9.18.040 Discharge into the storm drain prohibited

It is unlawful to cause, allow, or permit to be discharged, any discharge not composed entirely of stormwater to the storm drain system or to surface waters or to any location where it would contact or eventually be transported to surface waters, including flood plain areas, unless specifically called out in the Municipal Regional Permit as an exempt or conditionally exempt discharge.

9.18.070 Accidental Discharge

All persons shall notify the Director of Public Works immediately upon accidentally discharging pollutants of concern to enable countermeasures to be taken by the City to minimize damage to storm drains and the receiving waters. Initial notification shall be followed, within five (5) business days of the date of occurrence, by a detailed written statement describing the causes of the accidental discharge and the measures being taken to prevent future occurrences. Such notification will not relieve persons of liability for violations of this chapter or for any fines imposed on the City on account thereof under Section 13350 of the California Water Code, or for violation of Section 5650 of the California Fish and Wildlife Code, or any other applicable provisions of State or Federal laws.

9.18.220 Violation*

Any person who violates any provision of this Chapter shall be guilty of a misdemeanor and upon conviction thereof shall be punished as provided in Chapter 1.12 of the City of Cupertino Municipal Code.

Chapter 1.12: General Penalty, Section 1.12.010, paragraph D, states*:

Unless otherwise specified by this code, an infraction is punishable by:

1. A fine not to exceed \$100 for a first violation
2. A fine not to exceed \$200 for a second violation
3. A fine not to exceed \$500 for a third violation of the same chapter within one year.

9.18.240 Civil penalty for illicit discharges*

Any person who discharges pollutants, in violation of this Chapter, by the use of illicit connections shall be civilly liable to the City in a sum not to exceed **twenty-five thousand dollars per day per violation** for each day in which such violation occurs.

*Excerpts – For complete CODE language refer to the City of Cupertino Municipal Code.

Cupertino
Building Dept:
408-777-3228
Public Works Dept:
408-777-3354

Santa Clara County
Recycling Hotline:
800-533-8414
www.reducewaste.org
www.recyclestuff.com
Small Business Hazardous Waste:
408-299-7300

Cupertino Sanitary Sewer Distr
408-253-7071

Santa Clara Valley Urban Runoff
Pollution Prevention Prgm
800-794-2482

State Office of Emergency
Services
1-800-652-7550 (24 hrs)

Report spills to 911

General Construction and Site Supervision

Storm Drain Pollution from Construction Activities

Construction sites are common sources of storm water pollution. Materials and wastes that blow or wash into a storm drain, gutter, or street have a direct impact on local creeks and the Bay. As a contractor, or site supervisor, owner or operator of a site, you may be responsible for any environmental damage caused by your subcontractors or employees.

General Principles

- Keep an orderly site and ensure good housekeeping practices are used.
- Maintain equipment properly.
- Cover materials when they are not in use.
- Keep materials away from streets, storm drains and drainage channels.
- Ensure dust control water doesn't leave site or discharge to storm drains.

Advance Planning To Prevent Pollution

- Schedule excavation and grading activities for dry weather periods. To reduce soil erosion, plant temporary vegetation or place other erosion controls before rain begins. Use the Erosion and Sediment Control Manual, available from the Regional Water Quality Control Board, as a reference.
- Control the amount of runoff crossing your site (especially during excavation) by using berms or temporary or permanent drainage ditches to divert water flow around the site. Reduce stormwater runoff velocities by constructing temporary check dams or berms where appropriate.

Train your employees and subcontractors.

The city can provide training and obtain copies of the State's General Construction Activity Stormwater Permit if your construction site's disturbed area totals 5 acres or more. Information on the General Permit can be obtained from the Regional Water Quality Control Board. (This criteria will change to one acre as of Mar. 2003.)

Painting and Application of Solvents and Adhesives



Paint Removal

- Paint chips and dust from non-hazardous dry stripping and sand blasting may be swept up or collected in plastic drop cloths and disposed of as trash.

- Chemical paint stripping residue, and chips and dust from marine paints, or paint containing lead, mercury or tributyl tin must be disposed of as hazardous wastes. Lead based paint removal requires a state-certified contractor.

- When stripping or cleaning building exteriors with high-pressure water, block storm drains. Direct washwater onto a dirt area and spade into soil. Or, check with Cupertino Sanitary District to find out if you can mop or vacuum the washwater and dispose of it in a sanitary sewer drain. Sampling of the washwater may be required.

- Washwater from painted buildings constructed before 1978 can contain high amounts of Lead, even if paint chips are not present. Before you begin stripping paint or cleaning pre-1978 building exteriors with water under high pressure, test paint for lead by taking paint scrapings to a local laboratory. (See Yellow Pages for a state-certified laboratory.)

- If there is loose paint on the building, or if the paint tests positive for lead, block storm drains. Check with Cupertino Sanitary District to determine whether you may discharge water to the sanitary sewer, or if you must send it offsite for disposal as hazardous waste.

Paint Disposal, Return or Donation

- Dispose of unwanted liquid paint, thinners, solvents, glues, and cleaning fluids as hazardous waste (call the Small Business Hazardous Waste Prgm: 299-7300).

- Or Return to supplier. (Unopened cans of paint may be able to be returned. Check with the vendor regarding its "buy-back" policy.)

- Donate excess paint (call 299-7300 to donate).

Handling Paint Products

- Keep all liquid paint products and wastes away from the gutter, street, and storm drains.

Painting Cleanup

- Never clean brushes or rinse paint containers into a street, gutter, storm drain, French drain, or creek.

- For water-based paints, paint out brushes to the extent possible, and rinse into an inside sink drain that goes to the sanitary sewer.

- For oil-based paints, paint out brushes to the extent possible and clean with thinner or solvent. Filter and reuse thinners and solvents, where possible. Dispose of excess liquids and residue as hazardous waste.

- When thoroughly dry, empty paint cans, used brushes, rags, and drop cloths may be disposed of as garbage.

Landscaping, Gardening, and Pool Maintenance

Landscaping/Garden Maintenance

- Protect stockpiles and landscaping materials from wind and rain by storing them under tarps or secured plastic sheeting.

- Schedule grading and excavation projects during dry weather.
- Use temporary check dams or ditches to divert runoff away from storm drains.

- Protect storm drains with sandbags, gravel-filled bags, straw wattles, or other sediment controls.

- Re-vegetation is an excellent form of erosion control for any site.

- Store pesticides, fertilizers, and other chemicals indoors or in a shed or storage cabinet.

- Use pesticides sparingly, according to instructions on the label. Rinse empty containers, and use rinsewater as product. Dispose of rinsed, empty containers in the trash. Dispose of unused pesticides as hazardous waste.

- In Cupertino, residents with curbside recycling can collect lawn, garden and tree trimmings in yardwaste totes. Yardwaste will be collected and composted by the city's contractor. Residents are encouraged to compost yardwaste on-site themselves. Or take yardwaste to a landfill where it will be composted.

- Landscaping contractors should take all debris and pruning waste to a landfill that composts yard waste (BFI's Newby Island and Zanker Rd. landfill are the nearest).

- Do not blow or rake leaves into the street.

Storm Drain Pollution from Landscaping and Swimming Pool Maintenance

Many landscaping activities expose soils and increase the likelihood that earth and garden chemicals will run off into the storm drains during irrigation or when it rains. Swimming pool water containing chlorine and copper-based algaecides should never be discharged to storm drains. These chemicals are toxic to aquatic life.

Pool/Fountain/Spa Maintenance

Draining pools or spas

When it's time to drain a pool, spa, or fountain please be sure to call the Cupertino Sanitary District before you start. For further guidance on flow rate restrictions, backflow prevention, and handling space cleaning waste (such as acid wash). Discharge flows should be kept to the low levels typically possible through a garden hose. Higher flow rates may be prohibited by local ordinance.

- Never discharge pool or spa water to a street or storm drain; discharge to a sanitary sewer cleanout.

- If possible, when emptying a pool or spa, let chlorine dissipate for a few days and then recycle/rinse water by draining it gradually onto a landscaped area.

- Do not use copper-based algaecides. Control algae with chlorine or other alternatives, such as sodium bromide.

Filter Cleaning

- Never clean a filter in the street or near a storm drain. Rinse cartridge and diatomaceous earth filters onto a dirt area, and spade filter residue into soil. Dispose of spent diatomaceous earth in the garbage.

- If there is no suitable dirt area, call Cupertino Sanitary for instructions on discharging filter backwash or rinsewater to the sanitary sewer.

Earth-Moving Activities

Storm Drain Pollution from Earth-Moving Activities

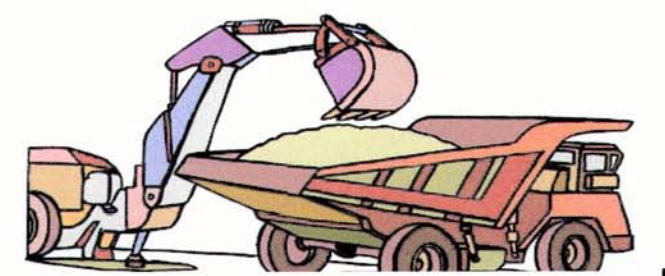
Soil excavation and grading operations loosen large amounts of soil that can flow or blow into storm drains when handled improperly. Sediments in runoff can clog storm drains, smother aquatic life, and destroy habitats in creeks and the Bay. Effective erosion control practices reduce the amount of runoff crossing a site and slow the flow with check dams or roughened ground surfaces.

Practices During Construction

- Remove existing vegetation only when absolutely necessary. Plant temporary vegetation for erosion control on slopes or where construction is not immediately planned.

- Protect downslope drainage courses, streams, and storm drains with wattles, or temporary drainage swales. Use check dams or ditches to divert runoff around excavations. Refer to the Regional Water Quality Control Board's Erosion and Sediment Control Field Manual for proper erosion and sediment control measures.

- Cover stockpiles and excavated soil with secured tarps or plastic sheeting.



Removal of BMP Facilities

The Project Contractor is responsible for removal of all BMP Facilities located within the Public Right of Way upon project final inspection.

Dewatering Operations

Storm Drain Pollution From Dewatering Activities

Be sure to call your city's storm water inspector at 408-472-9907 before discharging water to a street, gutter, or storm drain. Filtration or diversion through a basin, tank, and sediment trap may be required. Reuse water for dust control, irrigation or another on-site purpose to the greatest extent possible.

Check for Sediment or Toxic Pollutants

- Check for odors, discoloration, or an oily sheen on groundwater.

- Ask your city inspector whether the groundwater must be tested by a certified laboratory.

- Depending on the test results, you may be allowed to discharge pumped groundwater to the storm drain OR you may be required to discharge to the sanitary sewer or collect and haul the water off-site for treatment and disposal at an appropriate treatment facility.

- When discharging to a storm drain, protect the inlet using a barrier of burlap bags filled with drain rock, or cover inlet with filter fabric anchored under the grate.

- Contact Cupertino Sanitary District at 253-7071 prior to discharging to the sanitary sewer.

Fresh Concrete and Mortar Application



Storm Drain Pollution from Fresh Concrete and Mortar Applications

Fresh concrete and cement-related mortars that wash into lakes, streams, or estuaries are toxic to fish and the aquatic environment. Disposing of these materials to the storm drains or creeks can block storm drains, causes serious problems, and is prohibited by law.

General Business Practices

- Wash out concrete mixers only in designated washout areas in your yard, away from storm drains and waterways, where the water will flow into a temporary waste pit in a dirt area. Let water percolate through soil and dispose of settled, hardened concrete as garbage. Whenever possible, recycle washout by pumping back into mixers for reuse.

- Wash out chutes onto dirt areas that do not flow to streets or drains.

- Always store both dry and wet materials under cover, protected from rainfall and runoff and away from storm drains or waterways. Protect dry materials from wind.

- Secure bags of cement after they are open. Be sure to keep wind-blown cement powder away from streets, gutters, storm drains, rainfall, and runoff.

- Do not use diesel fuel as a lubricant on concrete forms, tools, or trailers.

During Construction

- Don't mix up more fresh concrete or cement than you will use in a two-hour period.
- Set up and operate small mixers on tarps or heavy plastic drop cloths.

- When cleaning up after driveway or sidewalk construction, wash fines onto dirt areas, not down the driveway or into the street or storm drain.

- Protect applications of fresh concrete and mortar from rainfall and runoff until the material has dried.

- Wash down exposed aggregate concrete only when the washwater can (1) flow onto a dirt area, (2) drain onto a bermed surface from which it can be pumped and disposed of properly, or (3) be vacuumed from a catchment created by blocking a storm drain inlet. If necessary, divert runoff with temporary berms. Make sure runoff does not reach gutters or storm drains.

- When breaking up pavement, be sure to pick up all the pieces and dispose of properly. Recycle large chunks of broken concrete. See www.reducewaste.org for info on recyclers.

- Never bury waste material. Dispose of small amounts of excess dry concrete, grout, and mortar in the trash.

- Never dispose of washout into the street, storm drains, drainage ditches, or streams.



Heavy Equipment Operation

Stormwater Pollution from Heavy Equipment on Construction Sites

Poorly maintained vehicles and heavy equipment that leak fuel, oil, antifreeze or other fluids on the construction site are common sources of storm drain pollution. Prevent spills and leaks by isolating equipment from runoff channels, and by watching for leaks and other maintenance problems. Remove construction equipment from the site as soon as possible.

Site Planning and Preventive Vehicle Maintenance

- Designate one area of the construction site, well away from streets or storm drain inlets, for auto and equipment parking, refueling, and routine vehicle and equipment maintenance. Contain the area with berms, sand bags, or other barriers.

- Maintain all vehicles and heavy equipment. Inspect frequently for and repair leaks.

- Perform major maintenance, repair jobs, and vehicle and equipment washing off-site, where clean up is easier.

- If you must drain and replace motor oil, radiator coolant, or other fluids on site, use drip pans or drop cloths to catch drips and spills. Collect all spent fluids, store in separate containers, and properly dispose as hazardous waste (recycle whenever possible).

- Do not use diesel oil to lubricate equipment parts, or clean equipment. Use only water for any on-site cleaning.

- Cover exposed fifth wheel hitches and other oily or greasy equipment during rain events.

- Spill Cleanup
 - Clean up spills immediately.
 - Never hose down "dirty" pavement or impermeable surfaces where fluids have spilled. Use dry clean up methods (absorbent materials, cat litter, and/or rags) whenever possible and properly dispose of absorbent materials.

- Sweep up spilled dry materials immediately. Never attempt to "wash them away" with water, or bury them.

- Use as little water as possible for dust control. Ensure water used doesn't leave a slick or discharge to storm drains.

- Clean up spills on dirt areas by digging up and properly disposing of contaminated soil.

- Call 911 for significant spills.
- If the spill poses a significant hazard to human health and safety, property or the environment, you must also report it to the State Office of Emergency Services.

Small Business Hazardous Waste Disposal Prgm

Businesses that generate less than 27 gallons or 220 pounds of hazardous waste per month are eligible to use this program. Call 408-299-7300 for a quote.



UPDATED SEPTEMBER 2016

APPROVED BY:
TIMM BORDEN, RC# 45612
DIRECTOR OF PUBLIC WORKS

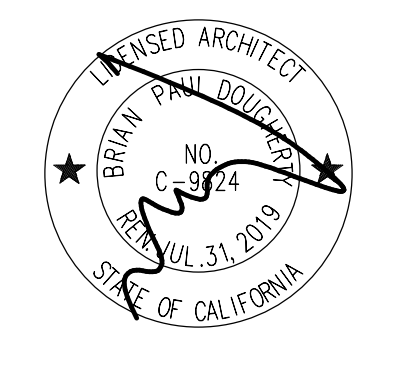
9/1/16
DATE

CONSTRUCTION BEST MANAGEMENT PRACTICES

CITY OF CUPERTINO

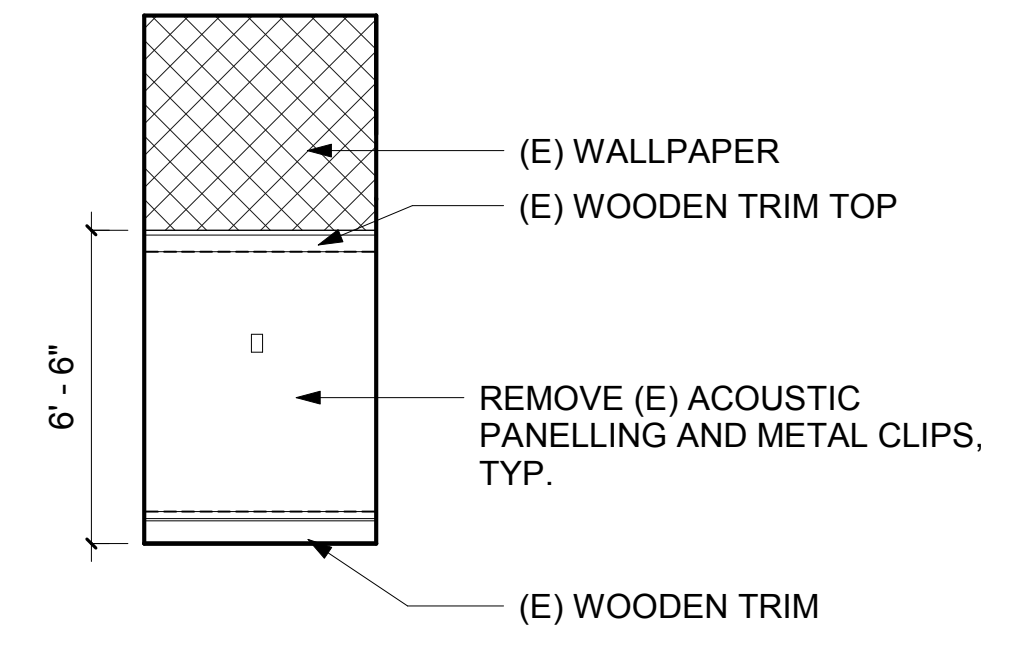
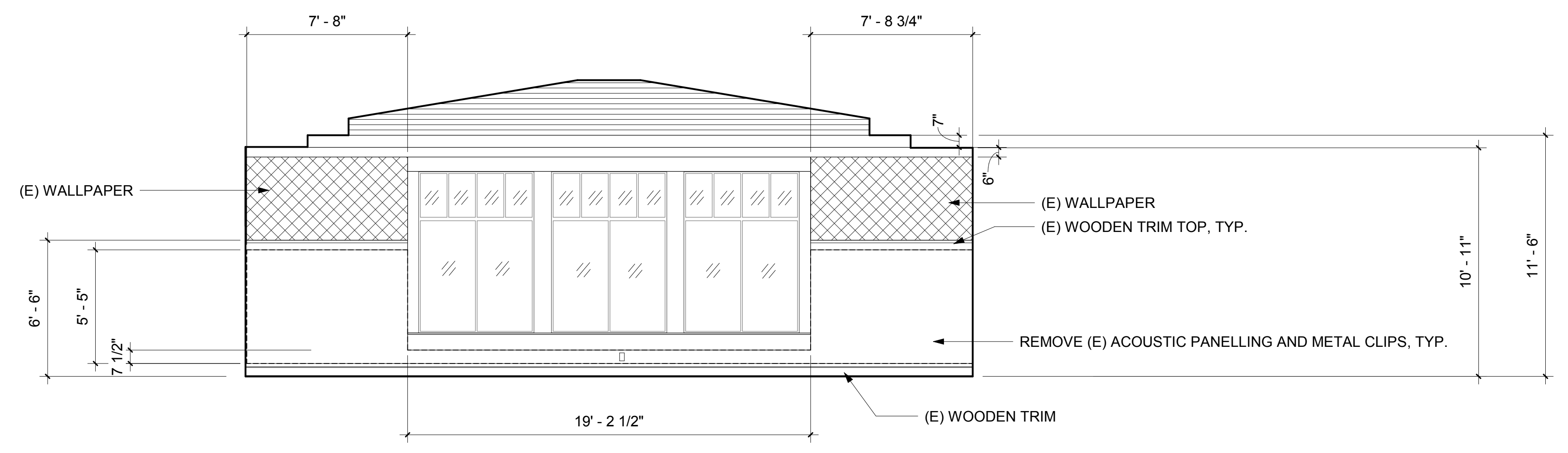
DEPARTMENT OF PUBLIC WORKS

G003



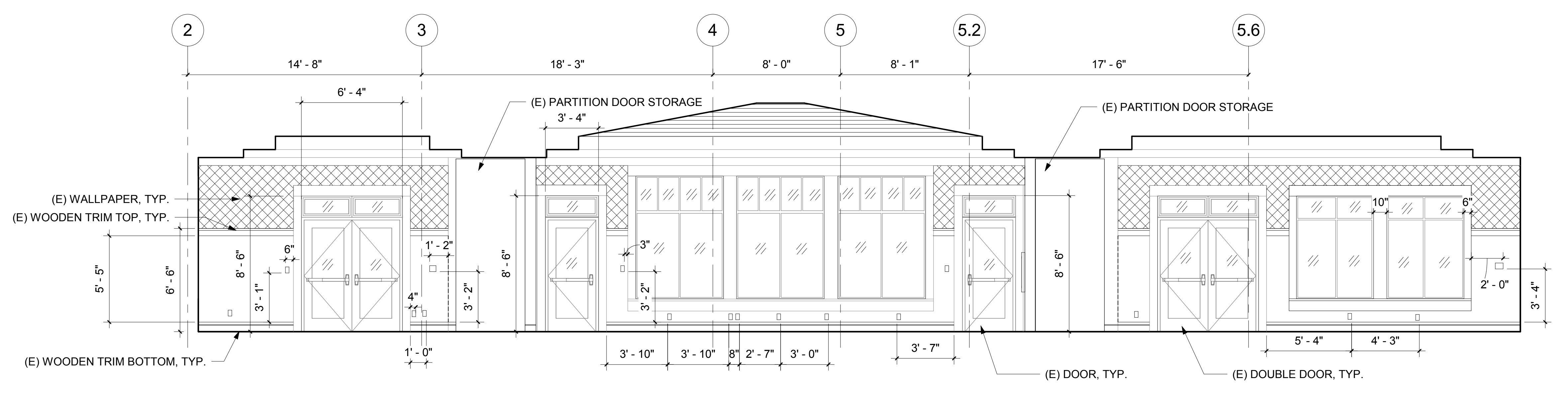
DEMOLITION NOTES

1. ITEMS ARE EXISTING UNLESS NOTED OTHERWISE
2. ALL DIMENSIONS TO BE FIELD VERIFIED



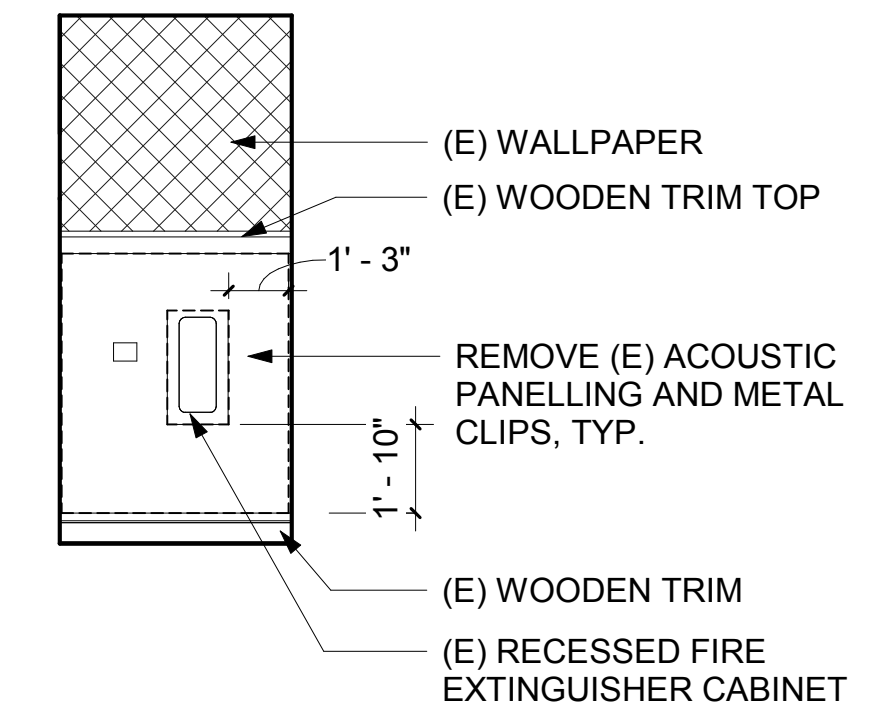
DEMO - RECEPTION HALL, 101 - NORTH ELEVATION D2
1/4" = 1'-0"

DEMO - RECEPTION HALL, WING WALL - NORTH ELEVATION A2
1/4" = 1'-0"

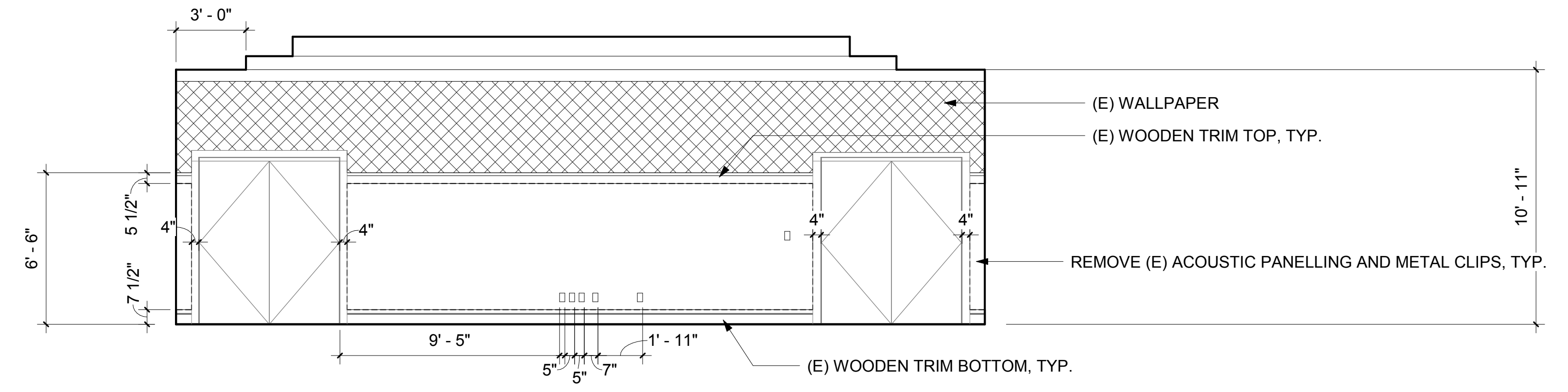


NOTE: NO ACOUSTIC PANELLING THIS ELEVATION - FOR REFERENCE ONLY

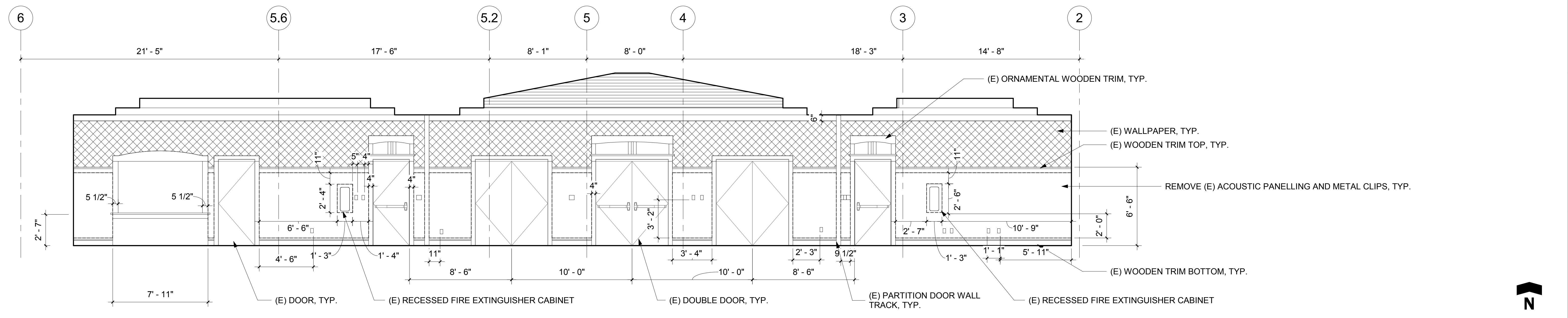
DEMO - RECEPTION HALL, 101 - EAST ELEVATION D5
1/4" = 1'-0"



DEMO - RECEPTION HALL, WING WALL - SOUTH ELEVATION A5
1/4" = 1'-0"



DEMO - RECEPTION HALL, 101 - SOUTH ELEVATION A7
1/4" = 1'-0"



DEMO - RECEPTION HALL, 101 - WEST ELEVATION A10
1/4" = 1'-0"

SENIOR CENTER REPAIRS - ACOUSTIC PANEL INSTALLATION

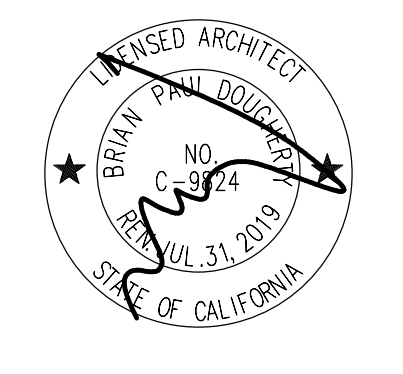
CITY OF CUPERTINO
21251 STEVENS CREEK BLVD.,
CUPERTINO, CA

JOB	21828.00
SCALE	AS NOTED
PM	SP
DATE	JUNE 28, 2018

DEMOLITION ELEVATIONS

PERKINS EASTMAN Dougherty
1904 Franklin Avenue, Suite 909
Oakland CA 94612
T. +1 510 654 2544
www.perkinseastman.com

AD101



SENIOR CENTER REPAIRS - ACOUSTIC PANEL INSTALLATION

JOB	21828.00
SCALE	AS NOTED
PM	SP
DATE	JUNE 28, 2018

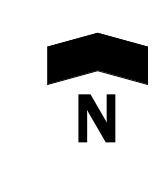
FIRST FLOOR PLAN

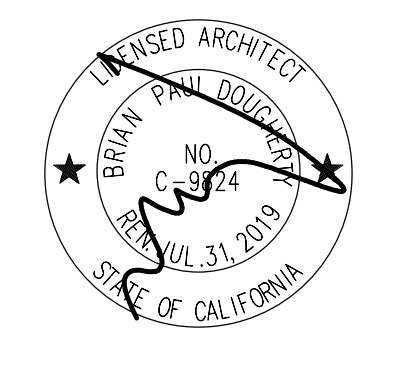
**PERKINS
— EASTMAN
Dougherty**

1904 Franklin Avenue, Suite 909
Oakland CA 94612
T. +1 510 654 2544
www.perkinseastman.com

A101

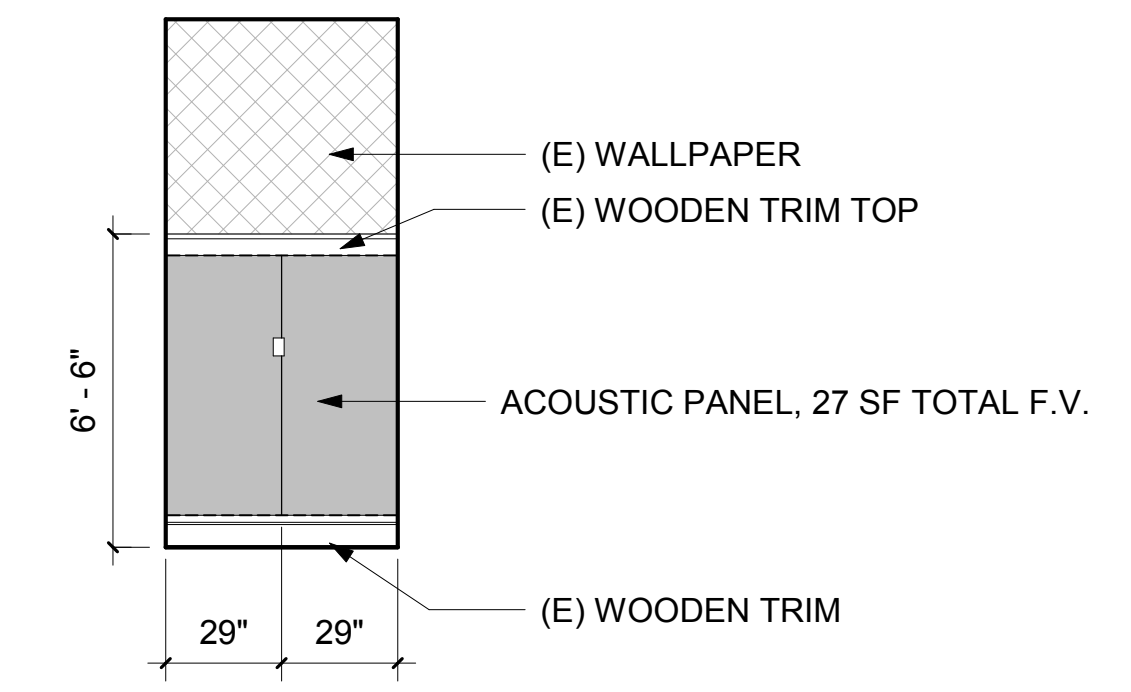
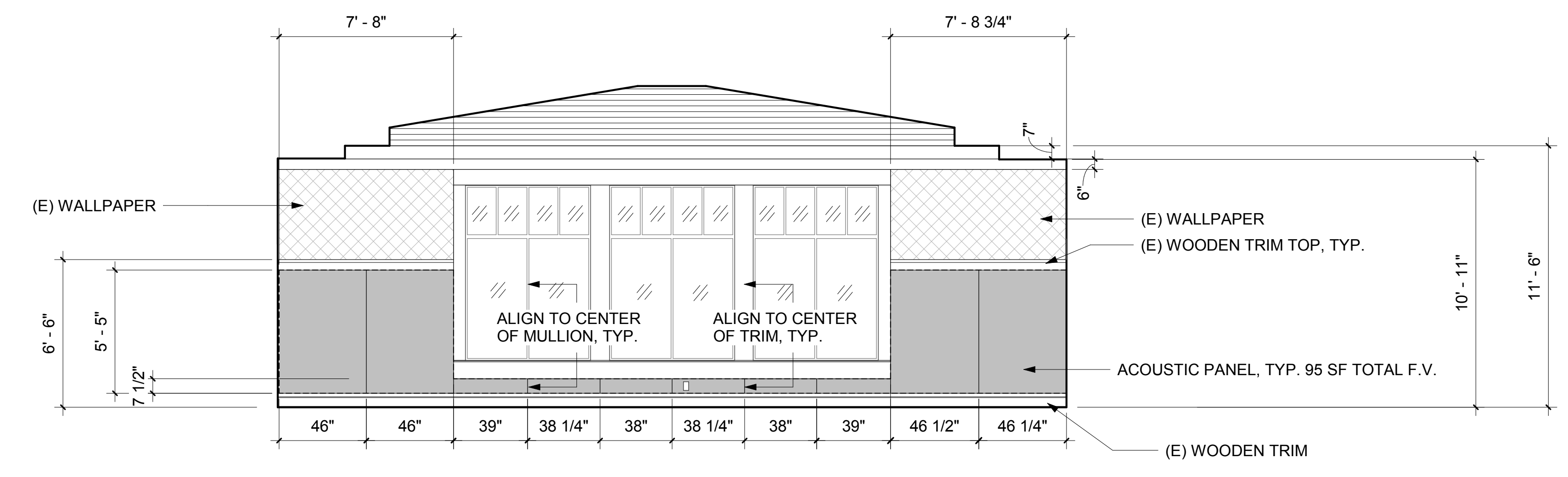
FLOOR PLAN A10
3/16" = 1'-0"





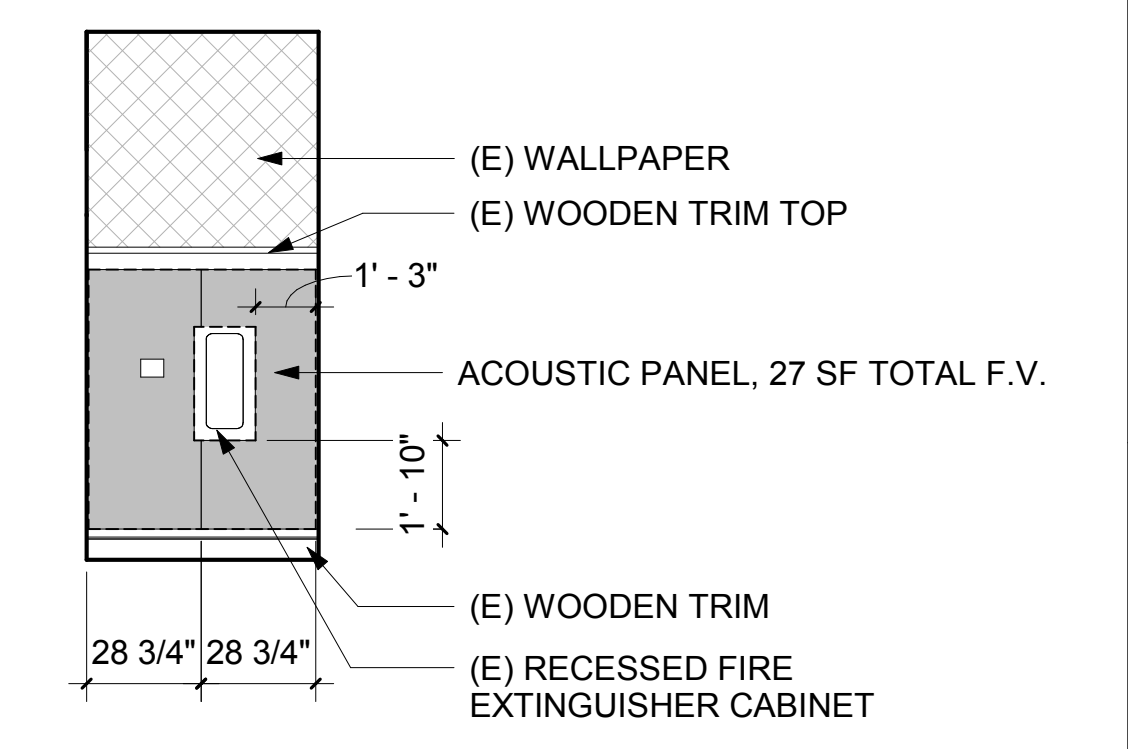
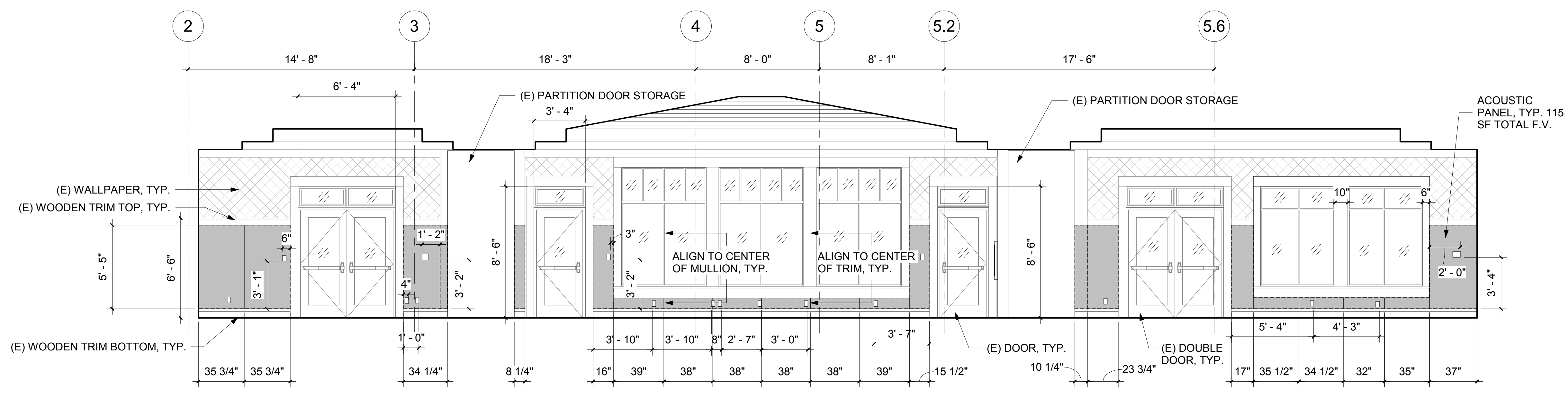
NOTES:

1. ALL SWITCHES, OUTLETS, DATA PORTS, FIRE ALARM PULLS AND SIMILAR TO BE EXTENDED TO BE FLUSH WITH FINISHED ACOUSTIC PANEL.
2. ALL DIMENSIONS TO BE FIELD VERIFIED



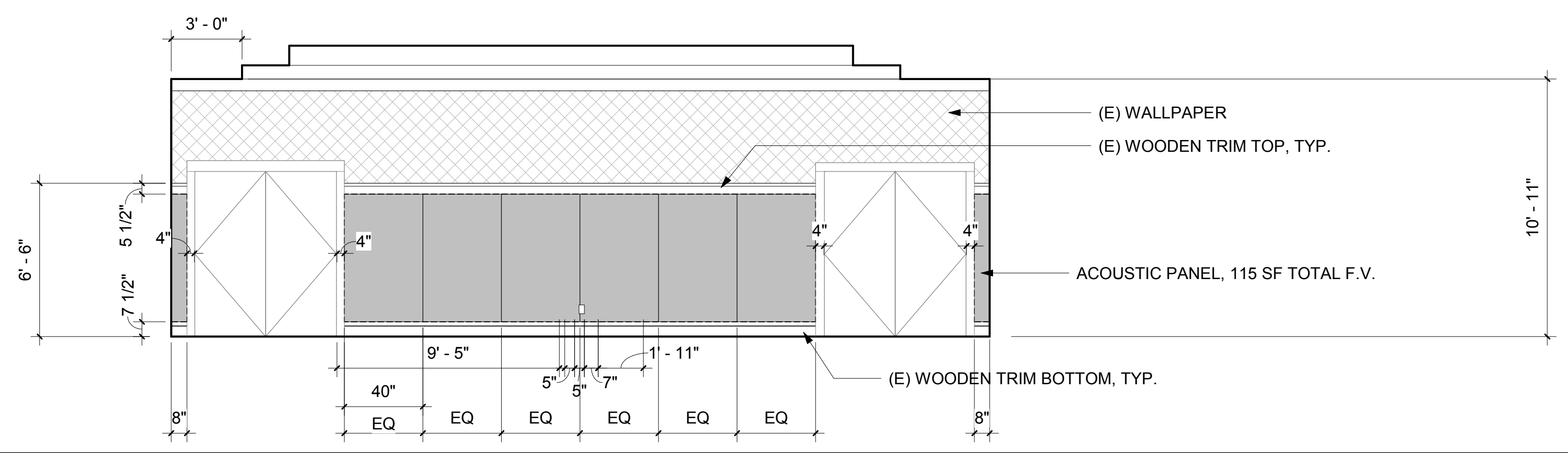
RECEPTION HALL, 101 - NORTH ELEVATION C2
1/4" = 1'-0"

RECEPTION HALL, WING WALL - NORTH ELEVATION A2
1/4" = 1'-0"



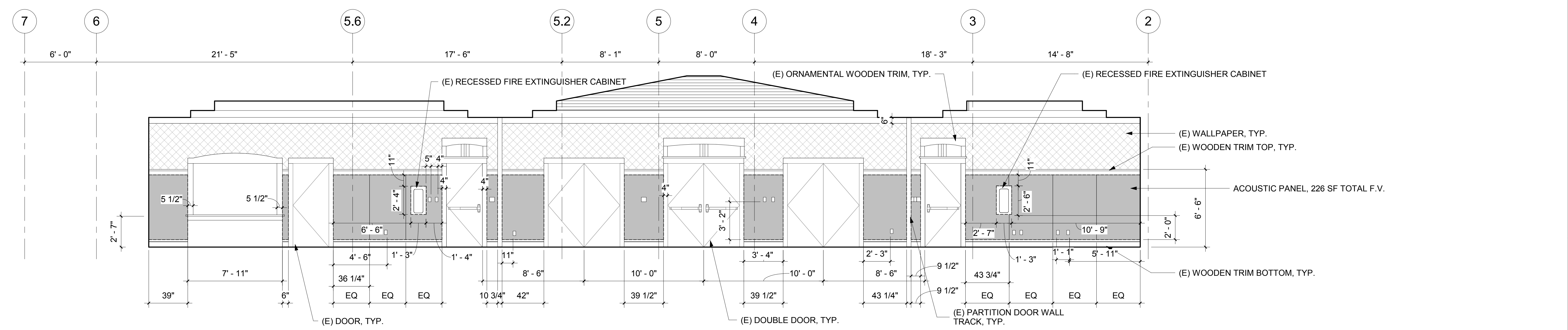
RECEPTION HALL, 101 - EAST ELEVATION C5
1/4" = 1'-0"

RECEPTION HALL, WING WALL - SOUTH ELEVATION A5
1/4" = 1'-0"



605 SF TOTAL - ACOUSTIC

RECEPTION HALL, 101 - SOUTH ELEVATION A7
1/4" = 1'-0"



RECEPTION HALL, 101 - WEST ELEVATION A10
1/4" = 1'-0"

SENIOR CENTER REPAIRS - ACOUSTIC PANEL INSTALLATION

CITY OF CUPERTINO
21251 STEVENS CREEK BLVD.,
CUPERTINO, CA

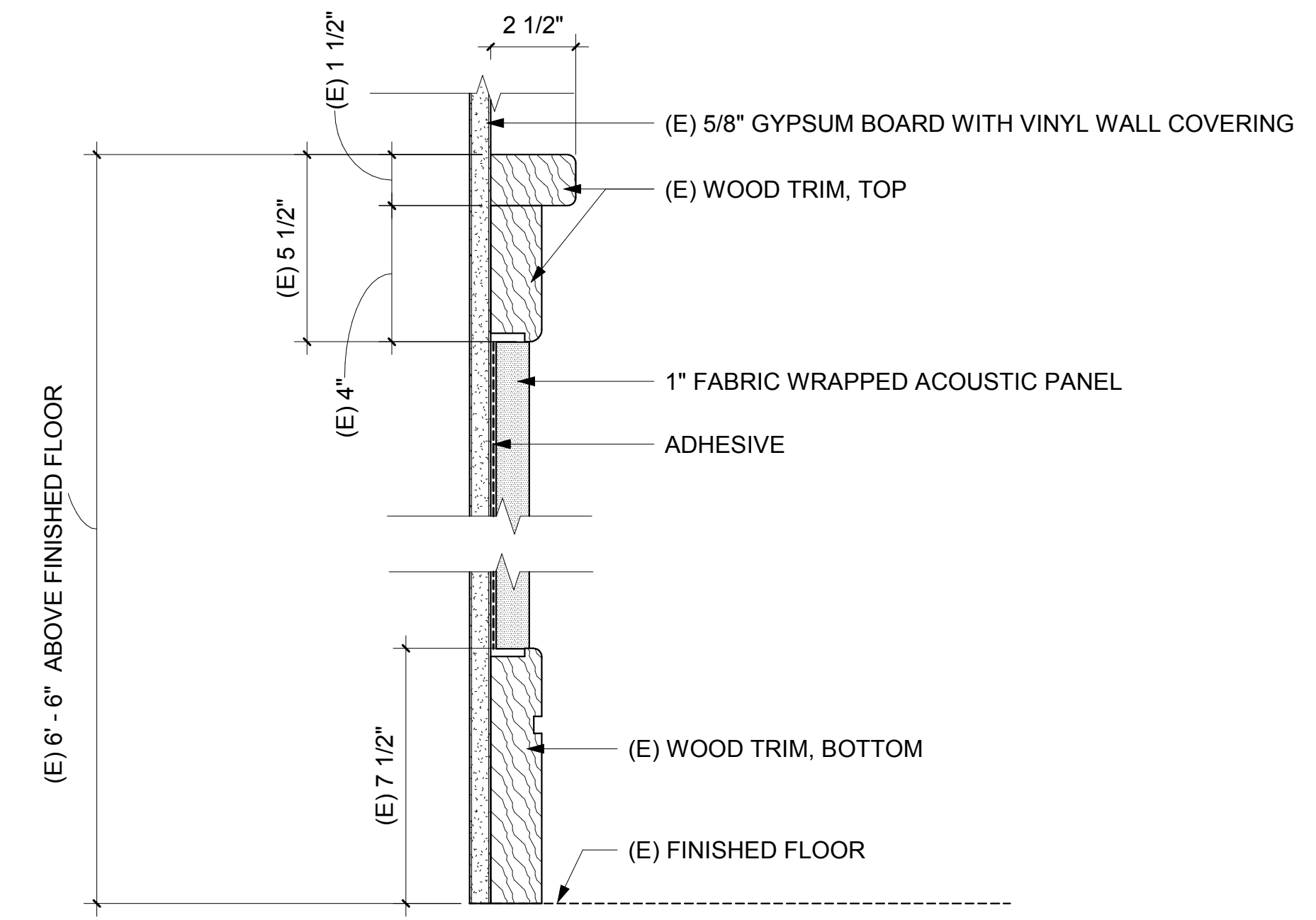
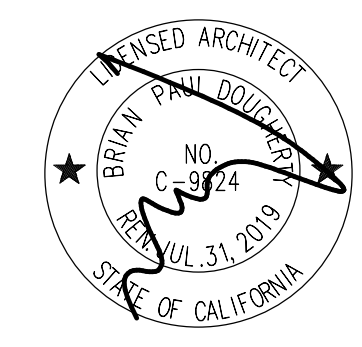
JOB	21828.00
SCALE	AS NOTED
PM	SP
DATE	JUNE 28, 2018

INTERIOR ELEVATIONS

**PERKINS
— EASTMAN
Dougherty**

1904 Franklin Avenue, Suite 909
Oakland CA 94612
T. +1 510 654 2544
www.perkinseastman.com

A401



ACOUSTIC PANEL AT RECEPTION HALL **A3**
 3" x 1'-0"

1
2
3
4
5
6
7
8
9
10

M | L | K | J | H | G | F | E | D | C | B | A

SENIOR CENTER REPAIRS - ACOUSTIC PANEL INSTALLATION

CITY OF CUPERTINO
 21251 STEVENS CREEK BLVD.,
 CUPERTINO, CA

JOB	21828.00
SCALE	AS NOTED
PM	SP
DATE	JUNE 28, 2018

ACOUSTIC PANEL DETAILS

**PERKINS
 — EASTMAN
 Dougherty**
 1904 Franklin Avenue, Suite 909
 Oakland CA 94612
 T. +1 510 654 2544
 www.perkinseastman.com

A501