

VALLCO TOWN CENTER

OWNER - VALLCO PROPERTY OWNER LLC
965 PAGE MILL ROAD, PALO ALTO, CA 94304
T. 650-344-1500

ARCHITECTURE - RAFAEL VINOLY ARCHITECTS
50 VANDAM STREET, NEW YORK, NY 10013
T. 212-924-6500

ARCHITECTURE - RAFAEL VINOLY ARCHITECTS
1033 N. WOLFE ROAD, OUPERTING, CA 95014
T. 408-627-7900

LANDSCAPE ARCHITECTURE - OLIN PARTNERSHIP LTD.
192 S. INDEPENDENCE MALL, W. SUITE 1120, PHILADELPHIA, PA 19106
T. 215-440-0030

CIVIL - SANDIS CIVIL ENGINEERS SURVEYORS PLANNERS, INC.
1700 S. WINCHESTER BLVD, SUITE 200, CAMPBELL, CA 95008
T. 408-636-0500

TRANSPORTATION ENGINEERING - ARUP NORTH AMERICA, LTD.
880 MISSION STREET, SUITE 700, SAN FRANCISCO, CA 94105
T. 415-557-9445

LIGHTING - ONE LUX STUDIO
158 WEST 29TH STREET, 10TH FLOOR, NEW YORK, NY 10001
T. 212-253-8750

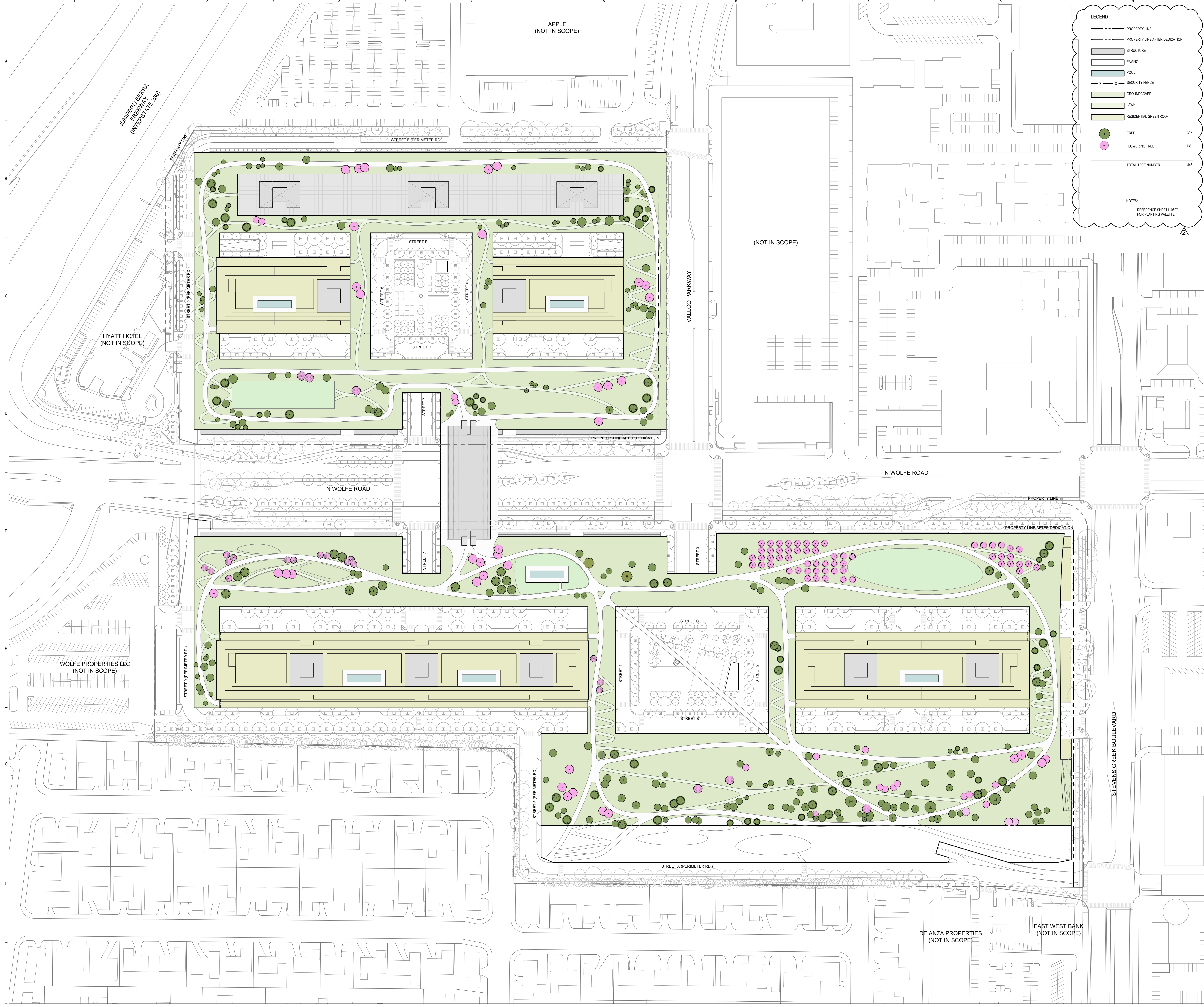
SIGNAGE - EXIT
1617 JFK BLVD, SUITE 1665, PHILADELPHIA, PA 19103
T. 215-581-1550

PARKING ENGINEERING - WATRY DESIGN, INC.
2099 GATEWAY PLACE, SUITE 550, SAN JOSE, CA 95110
T. 408-932-7900

LEGEND

- PROPERTY LINE
- PROPERTY LINE AFTER DEDICATION
- ▭ STRUCTURE
- ▭ PAVING
- ▭ POOL
- ▭ GROUND COVER
- ▭ SECURITY FENCE
- ▭ LAWN
- ▭ RESIDENTIAL GREEN ROOF
- TREE 307
- FLOWERING TREE 136
- TOTAL TREE NUMBER 443

NOTES:
1. REFERENCE SHEET L-0607 FOR PLANTING PALETTE

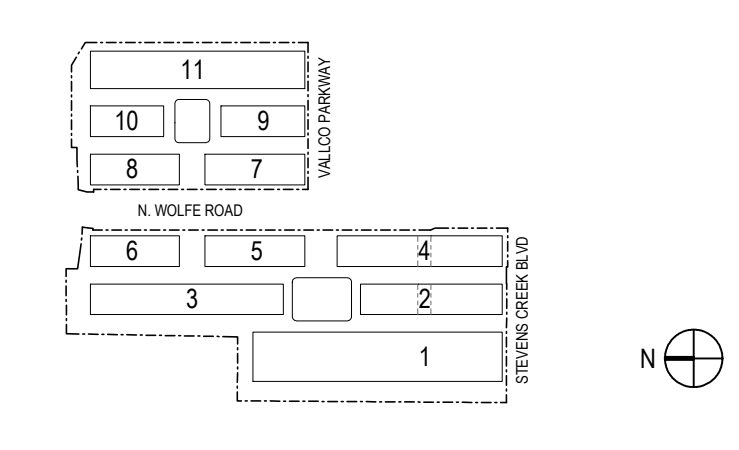


NOT FOR CONSTRUCTION

DISCLAIMER
THE ARCHITECT/ENGINEER SHALL HAVE NO RESPONSIBILITY FOR ANY LIABILITY, LOSS, COST, DAMAGE OR EXPENSE ARISING FROM OR RELATING TO ANY USE OF THIS DOCUMENT FOR ANY PURPOSE OTHER THAN ITS INTENDED PURPOSE ON THIS PROJECT. THIS DOCUMENT IS TO BE CONSIDERED IN CONJUNCTION WITH ALL RELATED DOCUMENTATION ON ANY DISCREPANCIES IDENTIFIED IN THIS DOCUMENT MUST BE REPORTED IMMEDIATELY TO THE ARCHITECT BEFORE PROCEEDING. CONTRACTORS MUST VERIFY ALL DIMENSIONS PRIOR TO PROCEEDING WITH ANY WORK. ONLY FIGURED DIMENSIONS ARE TO BE USED FOR VERIFICATION.

SB-35 DEVELOPMENT APPLICATION

REV	DESCRIPTION	DATE
REV-0	SB-35 DEVELOPMENT APPLICATION	03/27/2018
REV-1	SB-35 DEVELOPMENT APPLICATION	07/31/2018
REV-2	SB-35 DEVELOPMENT APPLICATION	09/22/2018



KEY PLAN AND NORTH ARROW

ARCHITECTS PROJECT NUMBER 708011

PROJECT PHASE SB-35 DEVELOPMENT APPLICATION

IF THIS DRAWING IS NOT 36"X48" IT IS A REDUCED PRINT. REFER TO GRAPHIC SCALE.



SCALE 1/8"=1'-0"

LANDSCAPE SITE PLAN GREEN ROOF LEVEL

SHEET TITLE
P-0604
SHEET NUMBER

© 2018 RAFAEL VINOLY ARCHITECTS PCL

N:\Projects\2018\1803-Vallco Town Center\CAD\CAD\CAD\Landscapes\Plan Green Roof Level.dwg, Chen, Rong 8/27/2018 10:31:32 AM
 N:\Projects\2018\1803-Vallco Town Center\CAD\CAD\CAD\Landscapes\Plan Green Roof Level.dwg, Chen, Rong 8/27/2018 10:31:32 AM

VALLCO TOWN CENTER

OWNER - VALLCO PROPERTY OWNER LLC
 965 PAGE MILL ROAD, PALO ALTO, CA 94304
 T. 650-344-1500

ARCHITECTURE - RAFAEL VINOLY ARCHITECTS
 50 VANDAM STREET, NEW YORK, NY 10013
 T. 212-924-6500

ARCHITECTURE - RAFAEL VINOLY ARCHITECTS
 1033 N. WOLFE ROAD, CUPERTINO, CA 95014
 T. 408-627-7900

LANDSCAPE ARCHITECTURE - OLIN PARTNERSHIP LTD.
 150 S. INDEPENDENCE MALL, W. SUITE 1120, PHILADELPHIA, PA 19106
 T. 215-440-0000

CIVIL - SANDIS CIVIL ENGINEERS SURVEYORS PLANNERS, INC.
 1700 S. WINCHESTER BLVD, SUITE 200, CAMPBELL, CA 95008
 T. 408-636-0500

TRANSPORTATION ENGINEERING - ARUP NORTH AMERICA, LTD.
 580 MISSION STREET, SUITE 700, SAN FRANCISCO, CA 94105
 T. 415-567-8445

LIGHTING - ONE LUX STUDIO
 158 WEST 29TH STREET, 10TH FLOOR, NEW YORK, NY 10001
 T. 212-205-6750

SIGNAGE - EXIT
 1617 JFK BLVD, SUITE 1665, PHILADELPHIA, PA 19103
 T. 215-581-1550

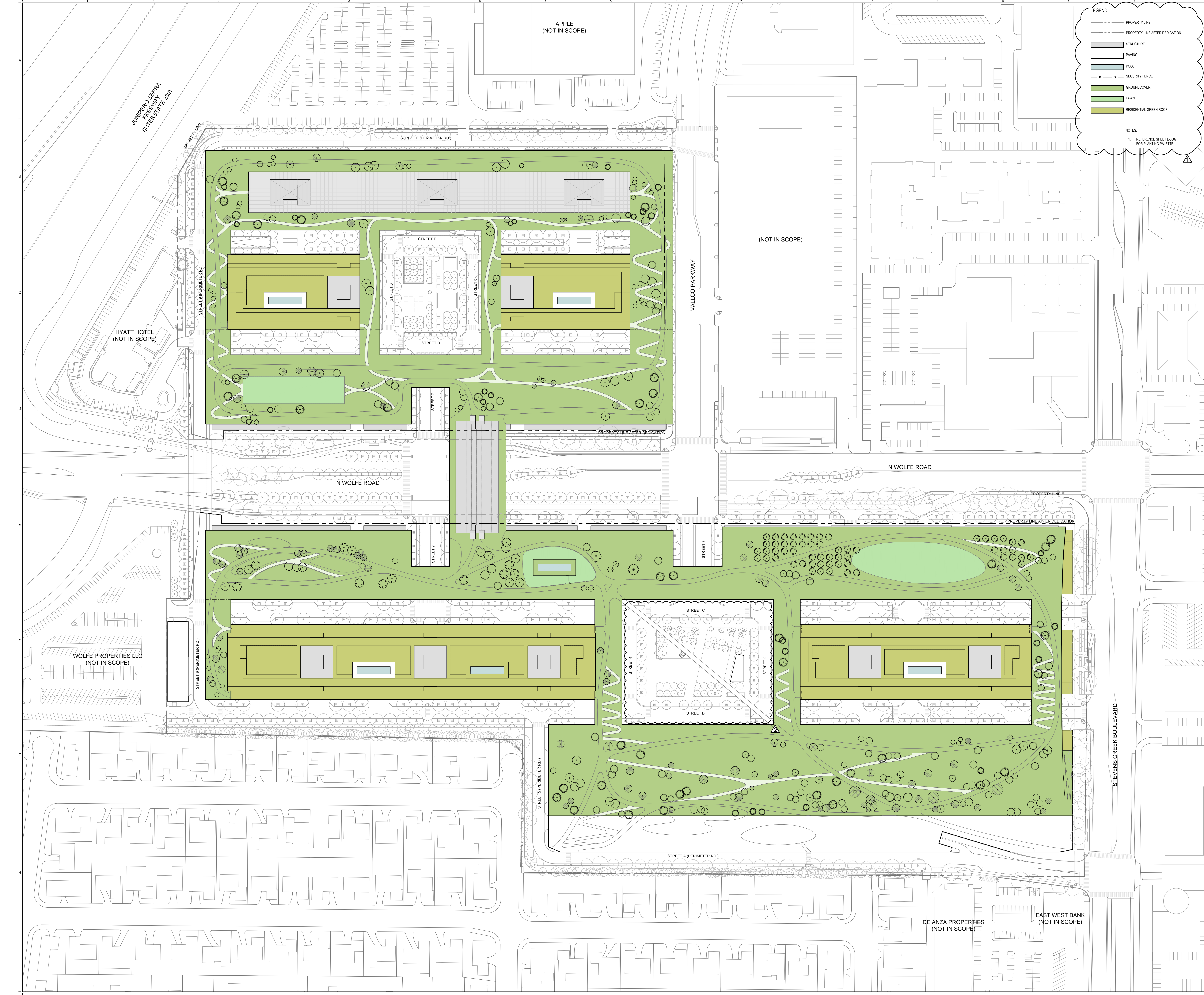
PARKING ENGINEERING - WATRY DESIGN, INC.
 2090 GATEWAY PLACE, SUITE 550, SAN JOSE, CA 95110
 T. 408-302-7900

LEGEND

- PROPERTY LINE
- PROPERTY LINE AFTER DEDICATION
- ▭ STRUCTURE
- ▭ PAVING
- ▭ POOL
- SECURITY FENCE
- ▭ GROUNDCOVER
- ▭ LAWN
- ▭ RESIDENTIAL GREEN ROOF

NOTES

- REFER SHEET L-007 FOR PLANTING PALETTE

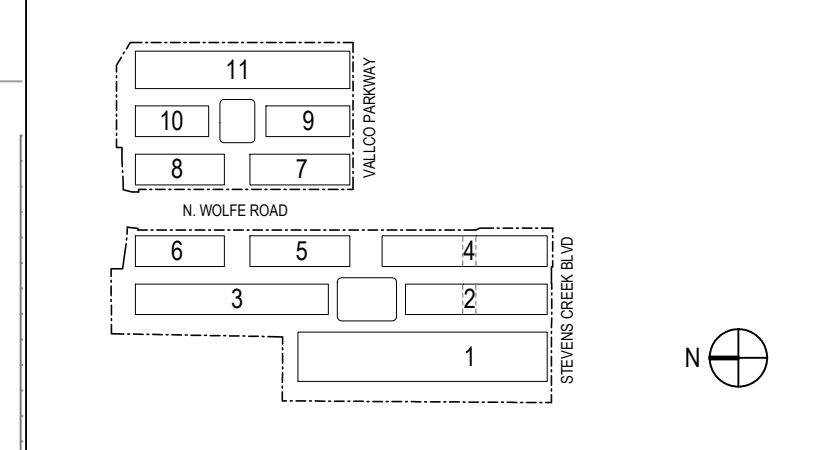


NOT FOR CONSTRUCTION

DISCLAIMER
 THE ARCHITECT/ENGINEER SHALL HAVE NO RESPONSIBILITY FOR ANY LIABILITY, LOSS, COST, DAMAGE OR EXPENSE ARISING FROM OR RELATING TO ANY USE OF THIS DOCUMENT FOR ANY PURPOSE OTHER THAN ITS INTENDED PURPOSE ON THIS PROJECT. THIS DOCUMENT IS TO BE CONSIDERED IN CONJUNCTION WITH ALL RELATED DOCUMENTATION. ANY DISCREPANCIES IDENTIFIED IN THIS DOCUMENT MUST BE REPORTED IMMEDIATELY TO THE ARCHITECT BEFORE PROCEEDING. CONTRACTORS MUST VERIFY ALL DIMENSIONS PRIOR TO PROCEEDING WITH ANY WORK. ONLY FIGURED DIMENSIONS ARE TO BE USED FOR VERIFICATION.

SB-35 DEVELOPMENT APPLICATION

REV	DESCRIPTION	DATE
REV-0	SB-35 DEVELOPMENT APPLICATION	03/27/2018
REV-1	SB-35 DEVELOPMENT APPLICATION	07/31/2018
REV-2	SB-35 DEVELOPMENT APPLICATION	08/22/2018



ARCHITECTS PROJECT NUMBER: 708011

PROJECT PHASE: SB-35 DEVELOPMENT APPLICATION

IF THIS DRAWING IS NOT 36"x48" IT IS A REDUCED PRINT. REFER TO GRAPHIC SCALE.

SCALE: 1/8"=1'-0"

PLANTING PLAN GREEN ROOF LEVEL - GROUNDCOVERS

SHEET TITLE:

P-0606

SHEET NUMBER:

© 2018 RAFAEL VINOLY ARCHITECTS PCL

V:\Projects\2018\1808-Vallco Town Center\CAD\City Submission\01\Plantings\Planting Plan Green Roof Level - Groundcovers.dwg; Chen, Rong 8/27/2018 10:54:28 AM

VALLCO TOWN CENTER

OWNER - VALLCO PROPERTY OWNER LLC
 965 PAGE MILL ROAD, PALO ALTO, CA 94304
 T. 650-344-1500

ARCHITECTURE - RAFAEL VINOLY ARCHITECTS
 50 VANDAM STREET, NEW YORK, NY 10013
 T. 212-924-6500

ARCHITECTURE - RAFAEL VINOLY ARCHITECTS
 1033 N. WOLFE ROAD, CUPERTINO, CA 95014
 T. 408-627-7900

LANDSCAPE ARCHITECTURE - OLIN PARTNERSHIP LTD.
 192 S. INDEPENDENCE MALL, W. SUITE 1120, PHILADELPHIA, PA 19106
 T. 214-440-0000

CIVIL - SANDIS CIVIL ENGINEERS SURVEYORS PLANNERS, INC.
 1700 S. WINCHESTER BLVD, SUITE 200, CAMPBELL, CA 95008
 T. 408-636-0500

TRANSPORTATION ENGINEERING - ARUP NORTH AMERICA, LTD.
 880 MISSION STREET, SUITE 700, SAN FRANCISCO, CA 94105
 T. 415-997-9445

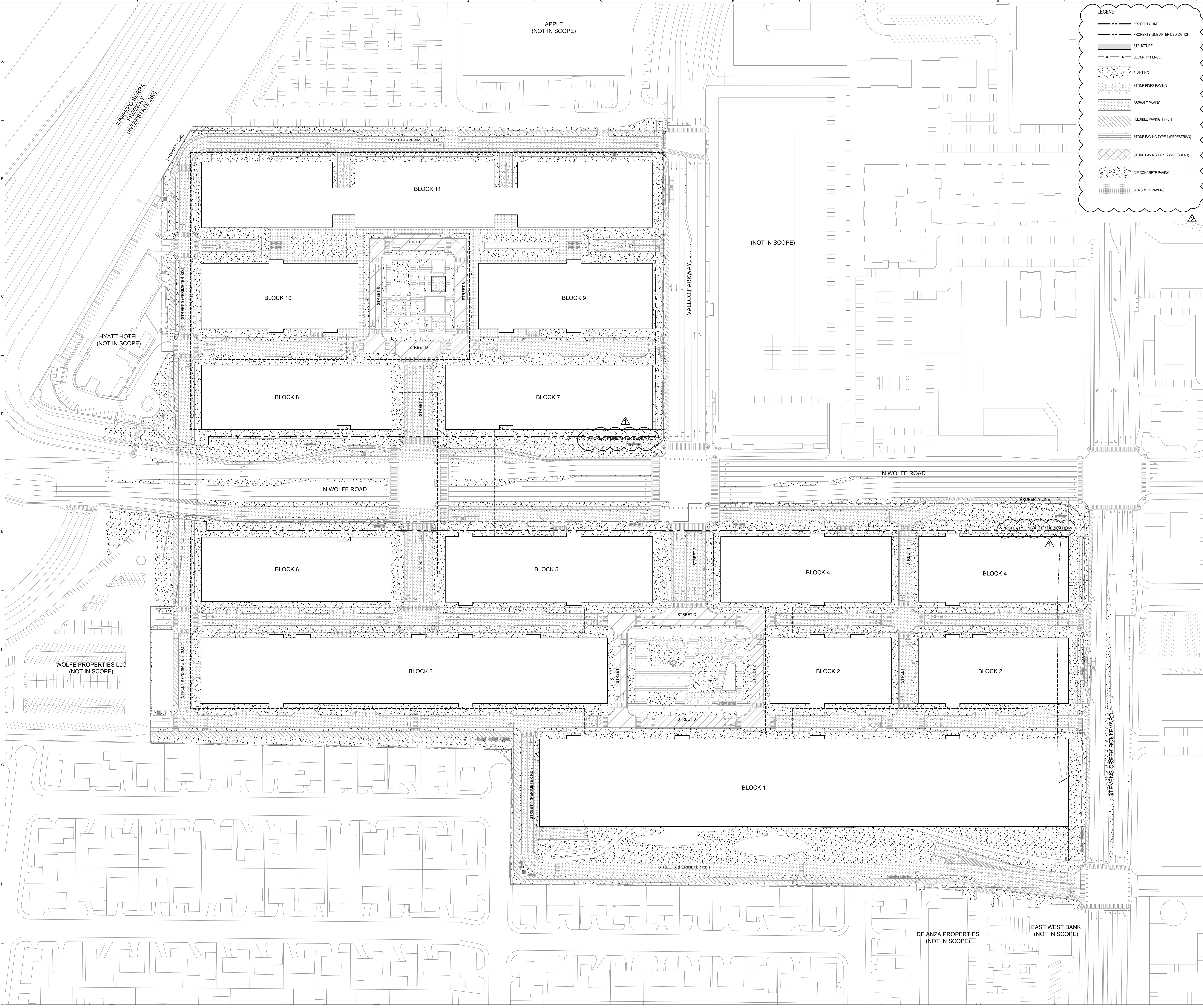
LIGHTING - ONE LUX STUDIO
 158 WEST 29TH STREET, 10TH FLOOR, NEW YORK, NY 10001
 T. 212-205-8750

SIGNAGE - EXIT
 1817 JFK BLVD, SUITE 1665, PHILADELPHIA, PA 19103
 T. 215-961-1950

PARKING ENGINEERING - WATRY DESIGN, INC.
 2099 GATEWAY PLACE, SUITE 550, SAN JOSE, CA 95110
 T. 408-932-7900

LEGEND

- PROPERTY LINE
- - - PROPERTY LINE AFTER DEDICATION
- ▭ STRUCTURE
- ▭ SECURITY FENCE
- PLANTING
- STONE FINES PAVING
- ASPHALT PAVING
- FLEXIBLE PAVING TYPE 1
- STONE PAVING TYPE 1 (PEDESTRIAN)
- STONE PAVING TYPE 2 (VEHICULAR)
- OP CONCRETE PAVING
- CONCRETE PAVERS

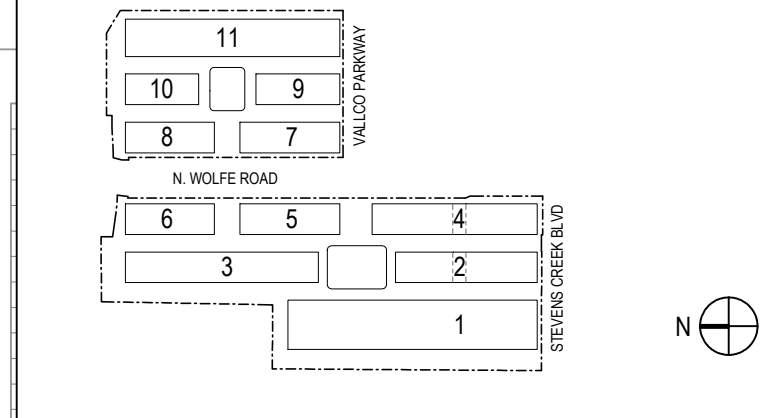


NOT FOR CONSTRUCTION

DISCLAIMER
 THE ARCHITECT/ENGINEER SHALL HAVE NO RESPONSIBILITY FOR ANY LIABILITY, LOSS, COST, DAMAGE OR EXPENSE ARISING FROM OR RELATING TO ANY USE OF THIS DOCUMENT FOR ANY PURPOSE OTHER THAN ITS INTENDED PURPOSE ON THIS PROJECT. THIS DOCUMENT IS TO BE CONSIDERED IN CONJUNCTION WITH ALL RELATED DOCUMENTATION. ANY DISCREPANCIES IDENTIFIED IN THIS DOCUMENT MUST BE REPORTED IMMEDIATELY TO THE ARCHITECT BEFORE PROCEEDING. CONTRACTORS MUST VERIFY ALL DIMENSIONS PRIOR TO PROCEEDING WITH ANY WORK. ONLY FIGURED DIMENSIONS ARE TO BE USED FOR VERIFICATION.

SB-35 DEVELOPMENT APPLICATION

REV	DESCRIPTION	DATE
REV 0	SB-35 DEVELOPMENT APPLICATION	03/27/2018
REV 1	SB-35 DEVELOPMENT APPLICATION	07/31/2018
REV 2	SB-35 DEVELOPMENT APPLICATION	09/22/2018



KEY PLAN AND NORTH ARROW

ARCHITECTS PROJECT NUMBER 708011

PROJECT PHASE SB-35 DEVELOPMENT APPLICATION

IF THIS DRAWING IS NOT 36"x48" IT IS A REDUCED PRINT. REFER TO GRAPHIC SCALE.



LANDSCAPE MATERIALS PLAN
 STREET LEVEL

SHEET TITLE
P-0608

SHEET NUMBER
 © 2018 RAFAEL VINOLY ARCHITECTS PCL

V:\Projects\2018\1803-Vallco Town Center\CAD\CAD City Submission\01\Arch\Drawings\01_Paving Perim Perim 8/21/2018 10:56:22 AM

VALLCO TOWN CENTER

OWNER - VALLCO PROPERTY OWNER LLC
965 PAGE MILL ROAD, PALO ALTO, CA 94304
T. 650-344-1500

ARCHITECTURE - RAFAEL VINOLY ARCHITECTS
50 VANDAM STREET, NEW YORK, NY 10013
T. 212-924-5560

ARCHITECTURE - RAFAEL VINOLY ARCHITECTS
1033 N. WOLFE ROAD, CUPERTINO, CA 95014
T. 408-627-7000

LANDSCAPE ARCHITECTURE - OLIN PARTNERSHIP LTD.
192 S. INDEPENDENCE HALL, V. SUITE 1123, PHILADELPHIA, PA 19106
T. 215-440-0000

CIVIL - SANDIS CIVIL ENGINEERS SURVEYORS PLANNERS, INC.
1700 S. WINCHESTER BLVD, SUITE 200, CAMPBELL, CA 95008
T. 408-636-0500

TRANSPORTATION ENGINEERING - ARUP NORTH AMERICA, LTD.
860 MISSION STREET, SUITE 700, SAN FRANCISCO, CA 94105
T. 415-597-9445

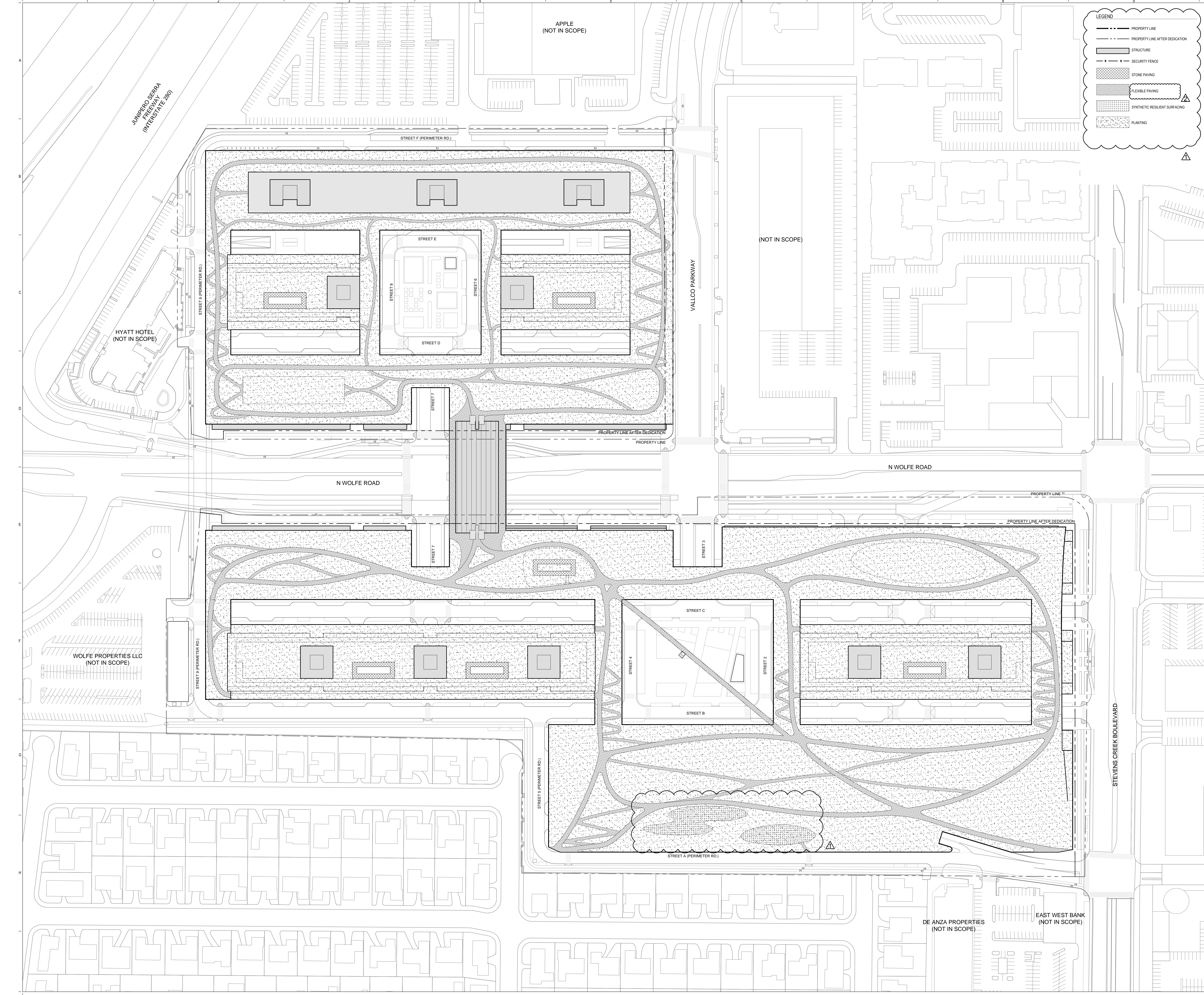
LIGHTING - ONE LUX STUDIO
158 WEST 29TH STREET, 10TH FLOOR, NEW YORK, NY 10001
T. 212-201-5750

SIGNAGE - EX-IT
1817 JFK BLVD, SUITE 1665, PHILADELPHIA, PA 19103
T. 215-561-1150

PARKING ENGINEERING - WATRY DESIGN, INC.
2099 GATEWAY PLACE, SUITE 550, SAN JOSE, CA 95110
T. 408-932-7500

LEGEND

- PROPERTY LINE
- - - PROPERTY LINE AFTER DEDICATION
- ▭ STRUCTURE
- - - SECURITY FENCE
- ▨ STONE PAVING
- ▩ FLEXIBLE PAVING
- ▧ SYNTHETIC RESILIENT SURFACING
- ▦ PLANTING

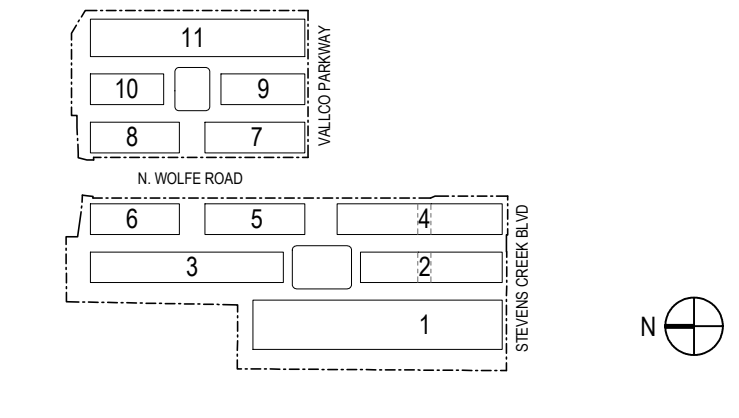


NOT FOR CONSTRUCTION

DISCLAIMER
THE ARCHITECT / ENGINEER SHALL HAVE NO RESPONSIBILITY FOR ANY LIABILITY, LOSS, COST, DAMAGE OR EXPENSE ARISING FROM OR RELATING TO ANY USE OF THIS DOCUMENT FOR ANY PURPOSE OTHER THAN ITS INTENDED PURPOSE ON THIS PROJECT. THIS DOCUMENT IS TO BE CONSIDERED IN CONJUNCTION WITH ALL RELATED DOCUMENTATION. ANY DISCREPANCIES IDENTIFIED IN THIS DOCUMENT MUST BE REPORTED IMMEDIATELY TO THE ARCHITECT BEFORE PROCEEDING. CONTRACTORS MUST VERIFY ALL DIMENSIONS PRIOR TO PROCEEDING WITH ANY WORK. ONLY FIGURED DIMENSIONS ARE TO BE USED FOR VERIFICATION.

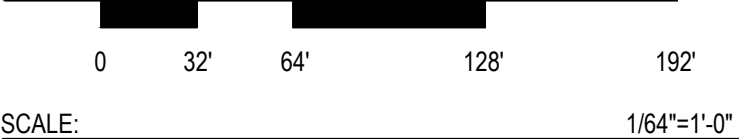
SB-35 DEVELOPMENT APPLICATION

REV	DESCRIPTION	DATE
REV-0	SB-35 DEVELOPMENT APPLICATION	03/27/2018
REV-1	SB-35 DEVELOPMENT APPLICATION	07/31/2018
REV-2	SB-35 DEVELOPMENT APPLICATION	09/22/2018



ARCHITECTS PROJECT NUMBER: 708011
PROJECT PHASE: SB-35 DEVELOPMENT APPLICATION

IF THIS DRAWING IS NOT 36"X48" IT IS A REDUCED PRINT. REFER TO GRAPHIC SCALE.



SCALE: 1/8"=1'-0"
**LANDSCAPE MATERIALS PLAN
GREEN ROOF LEVEL**

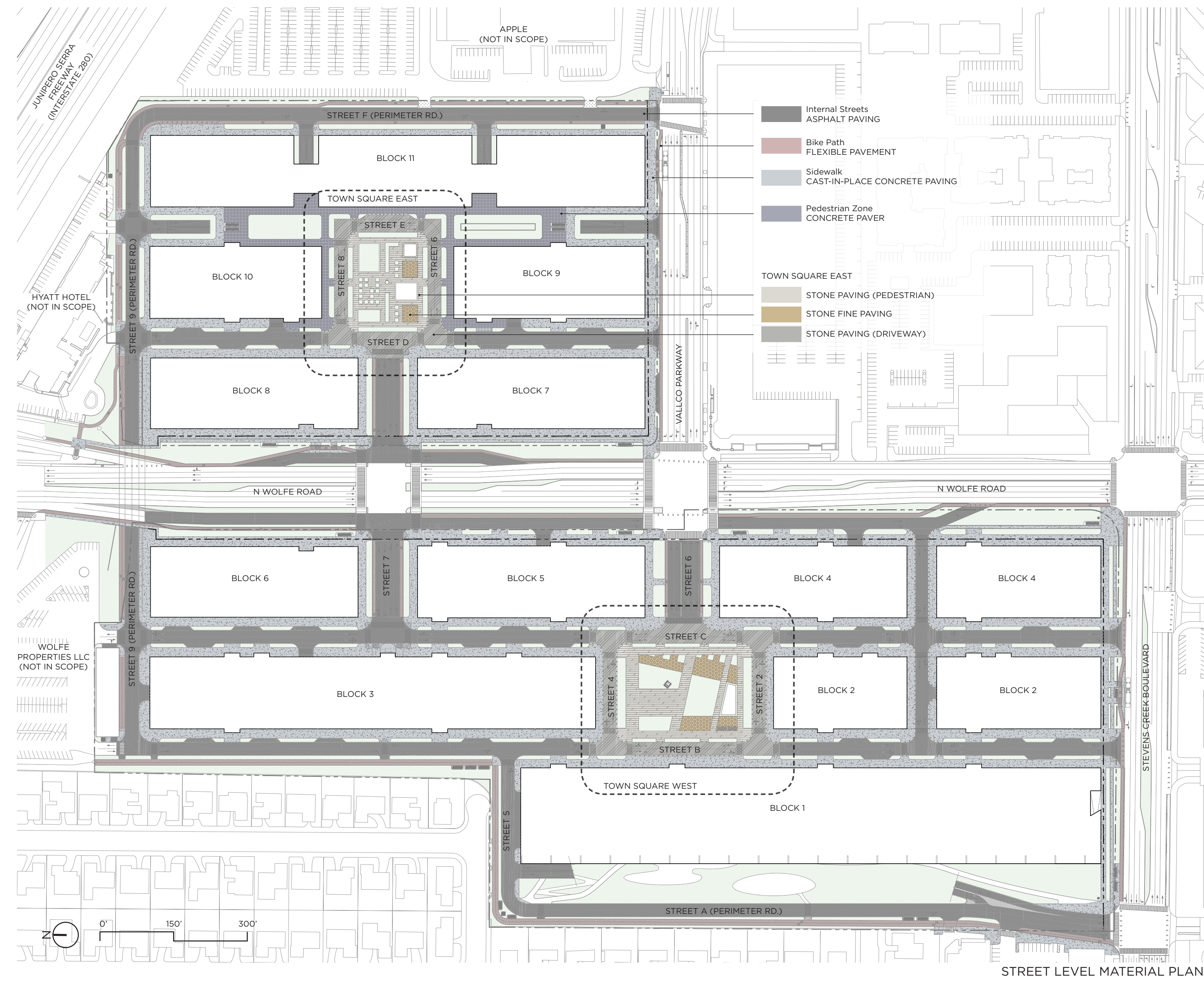
SHEET TITLE:
P-0609

SHEET NUMBER:
© 2018 RAFAEL VINOLY ARCHITECTS PCL

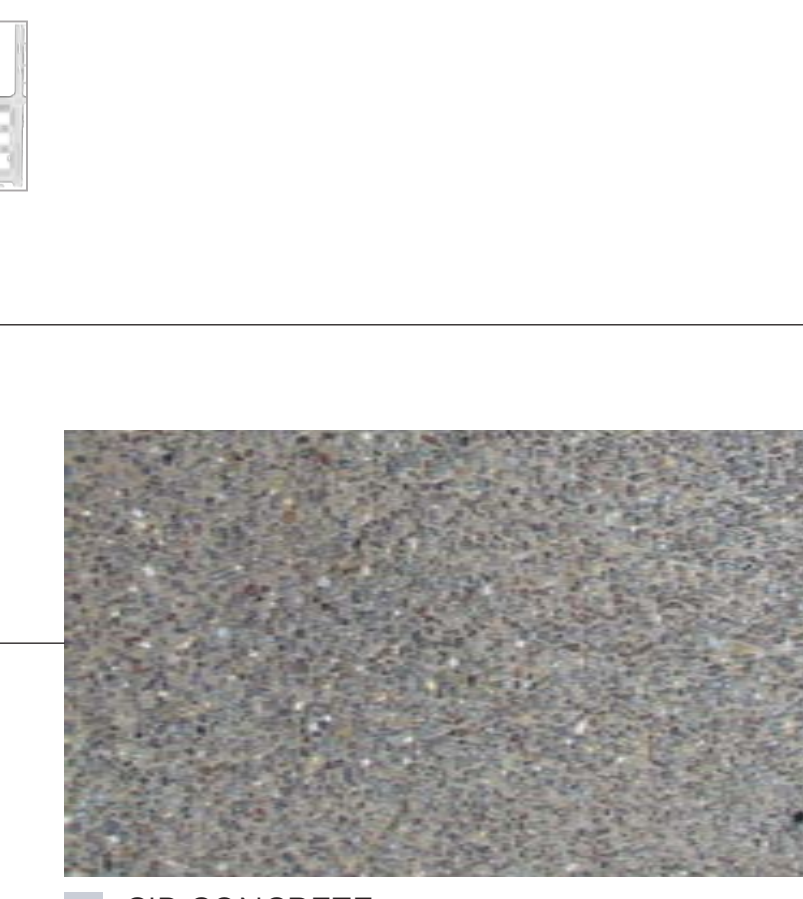
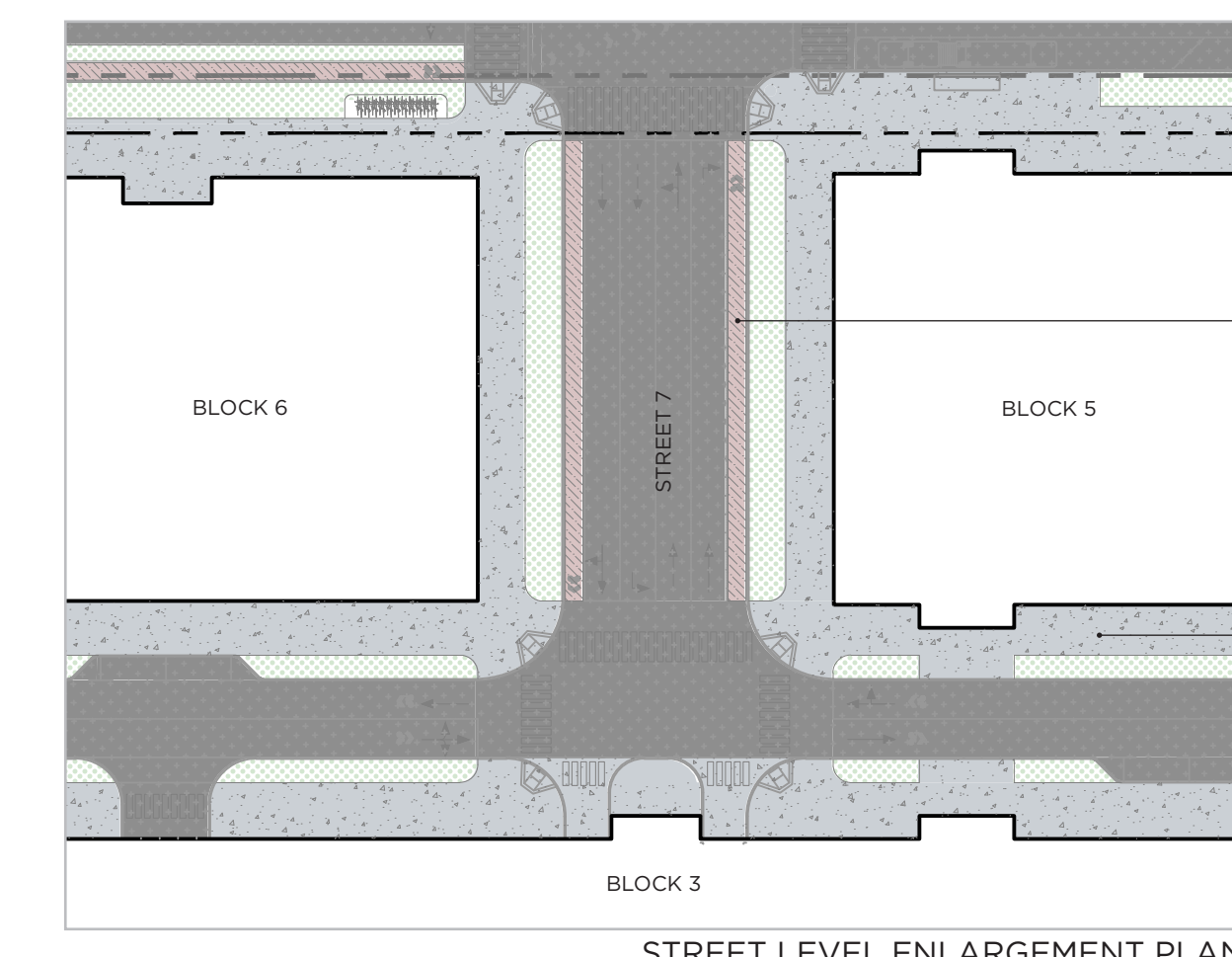
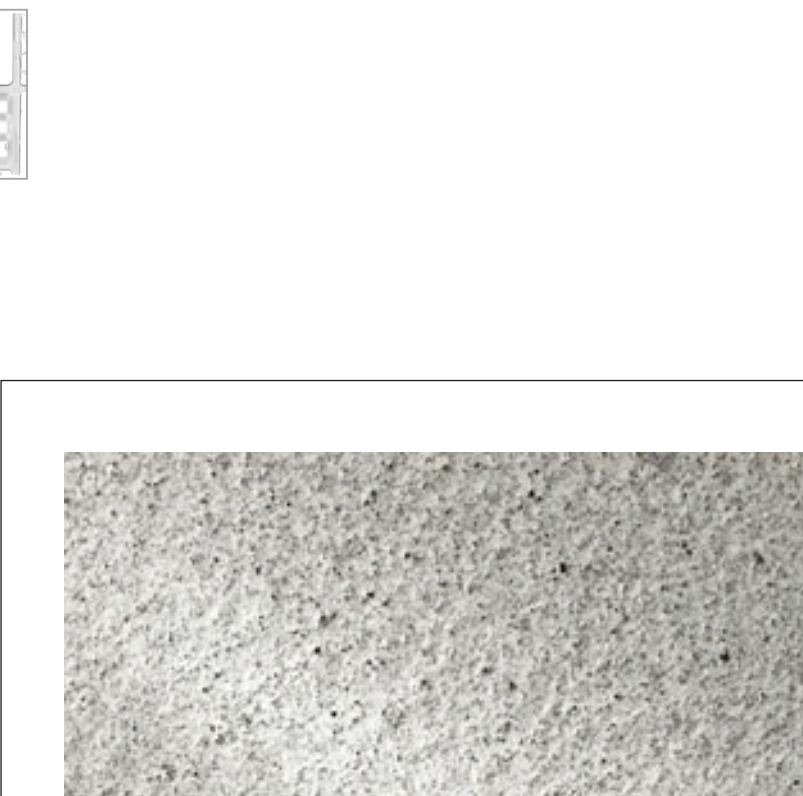
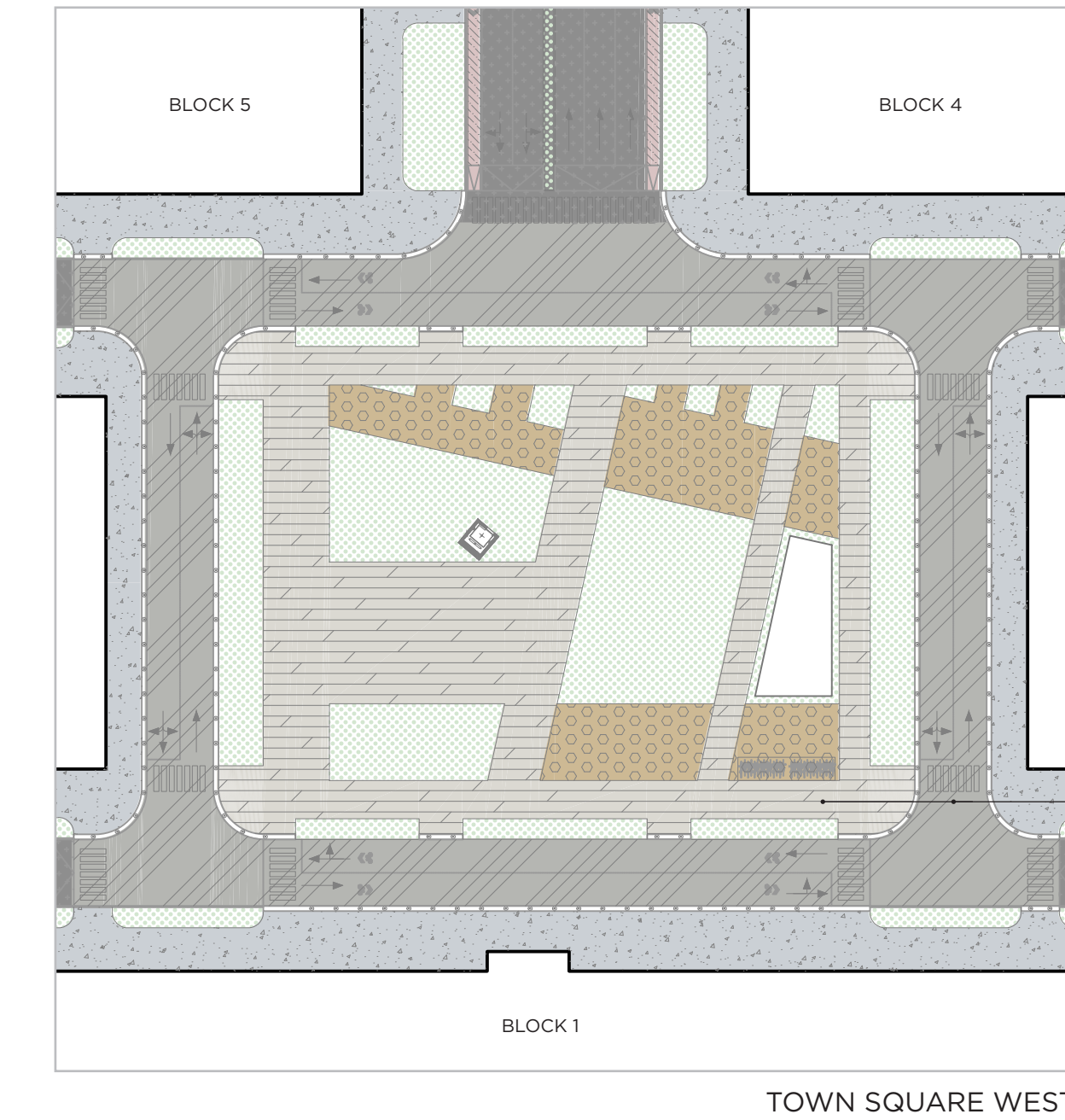
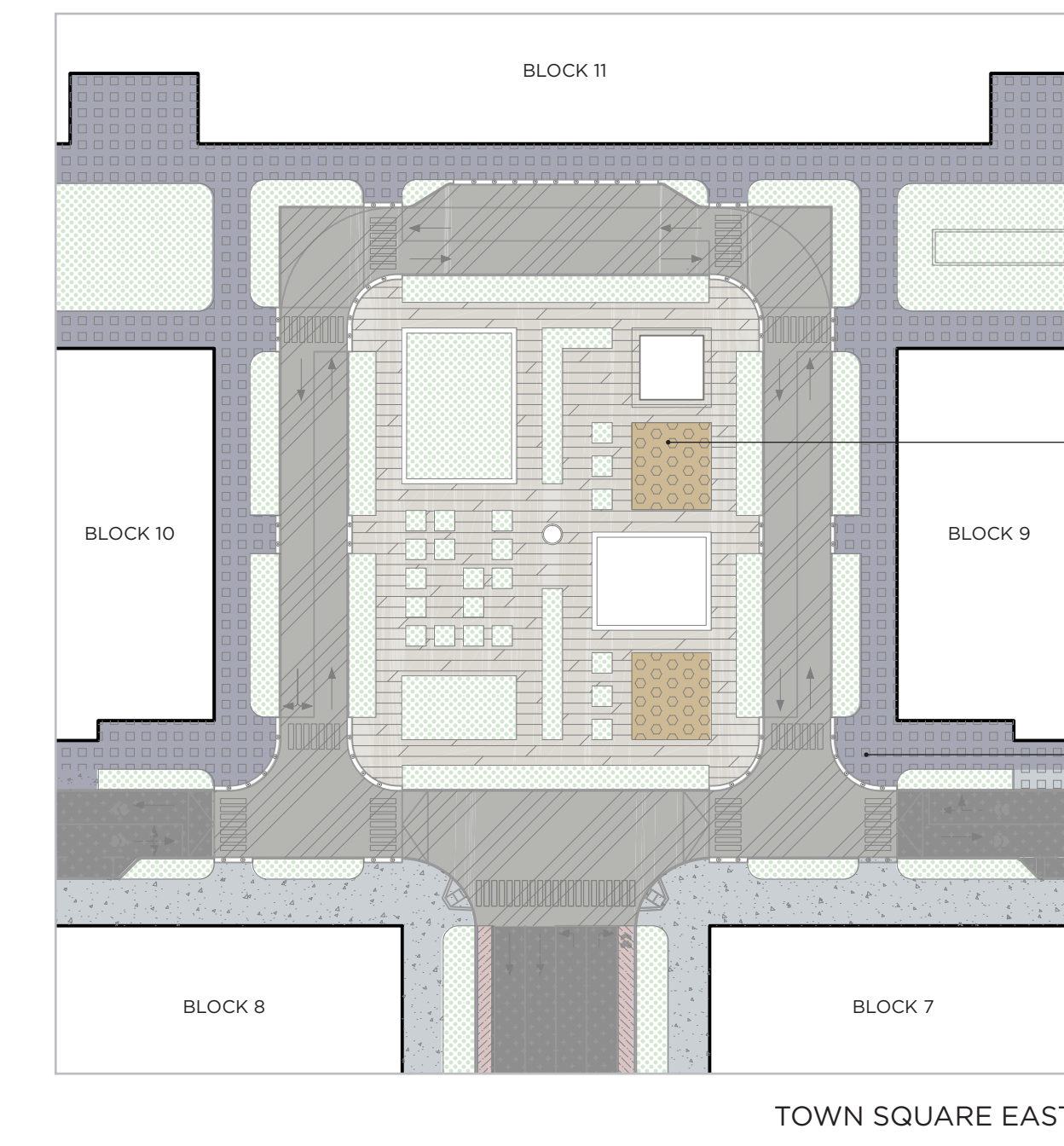
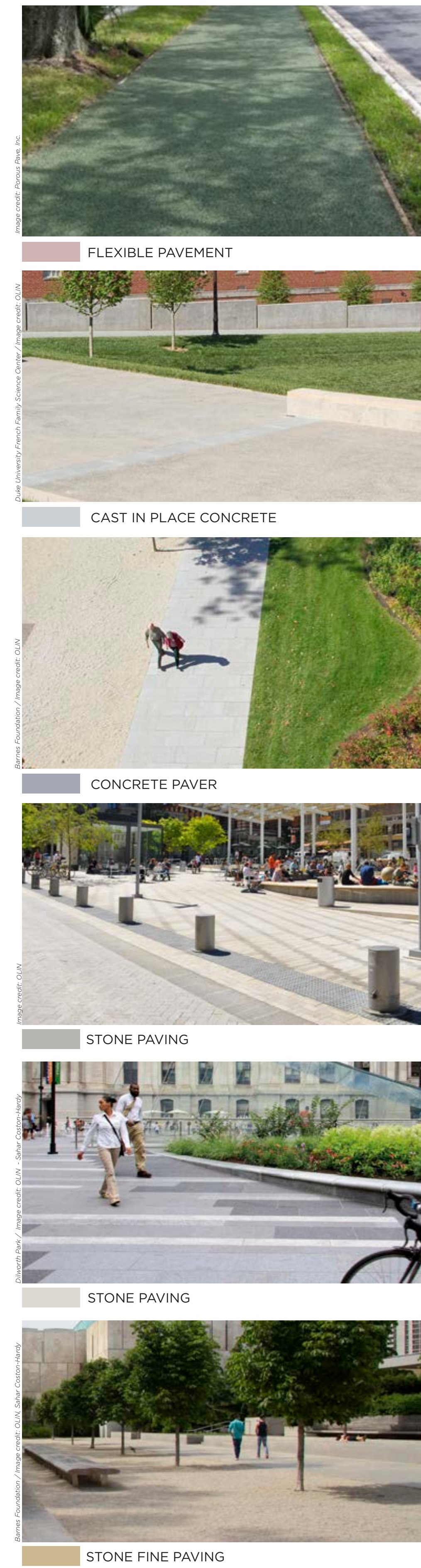
V:\Projects\2018\1803-Valco Town Center\CAD\CAD\CAD\Drawings\Permit\Set\0609_Landscape Materials Plan Roof.dwg, Chen, Rong 6/7/2018 11:02:45 AM

VALLCO TOWN CENTER

PAVING: STREET LEVEL

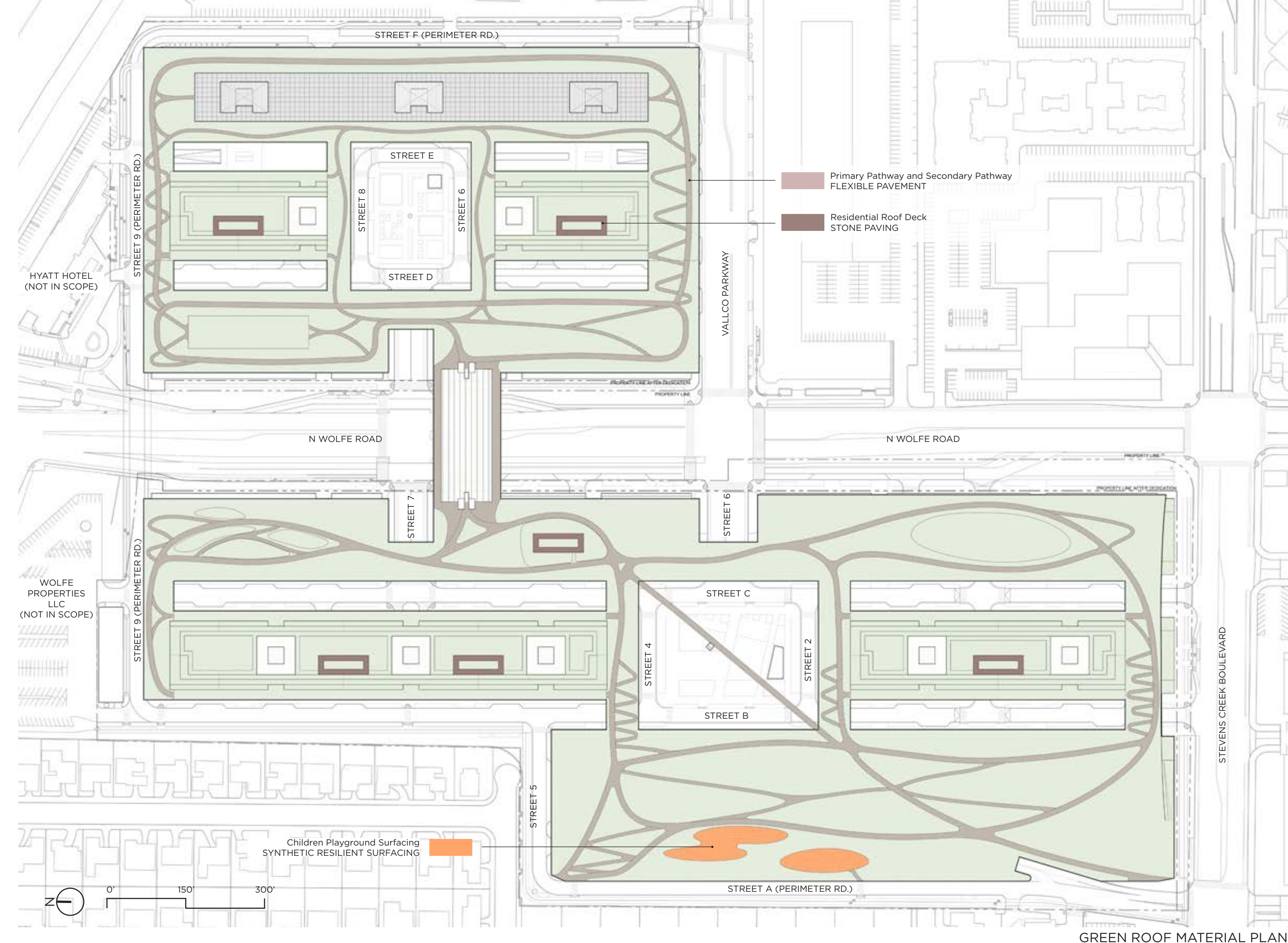


PRECEDENT IMAGES

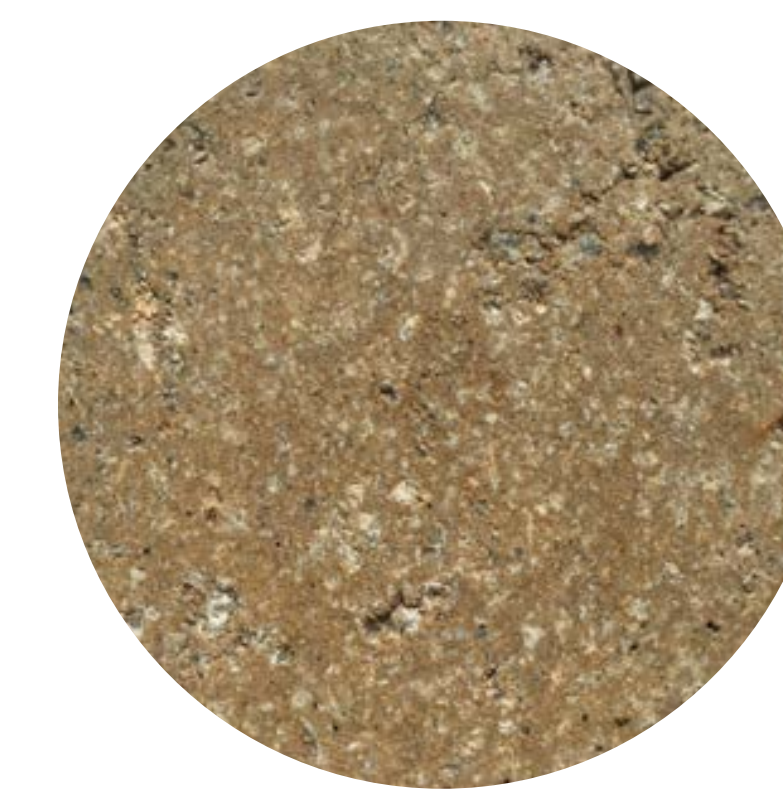
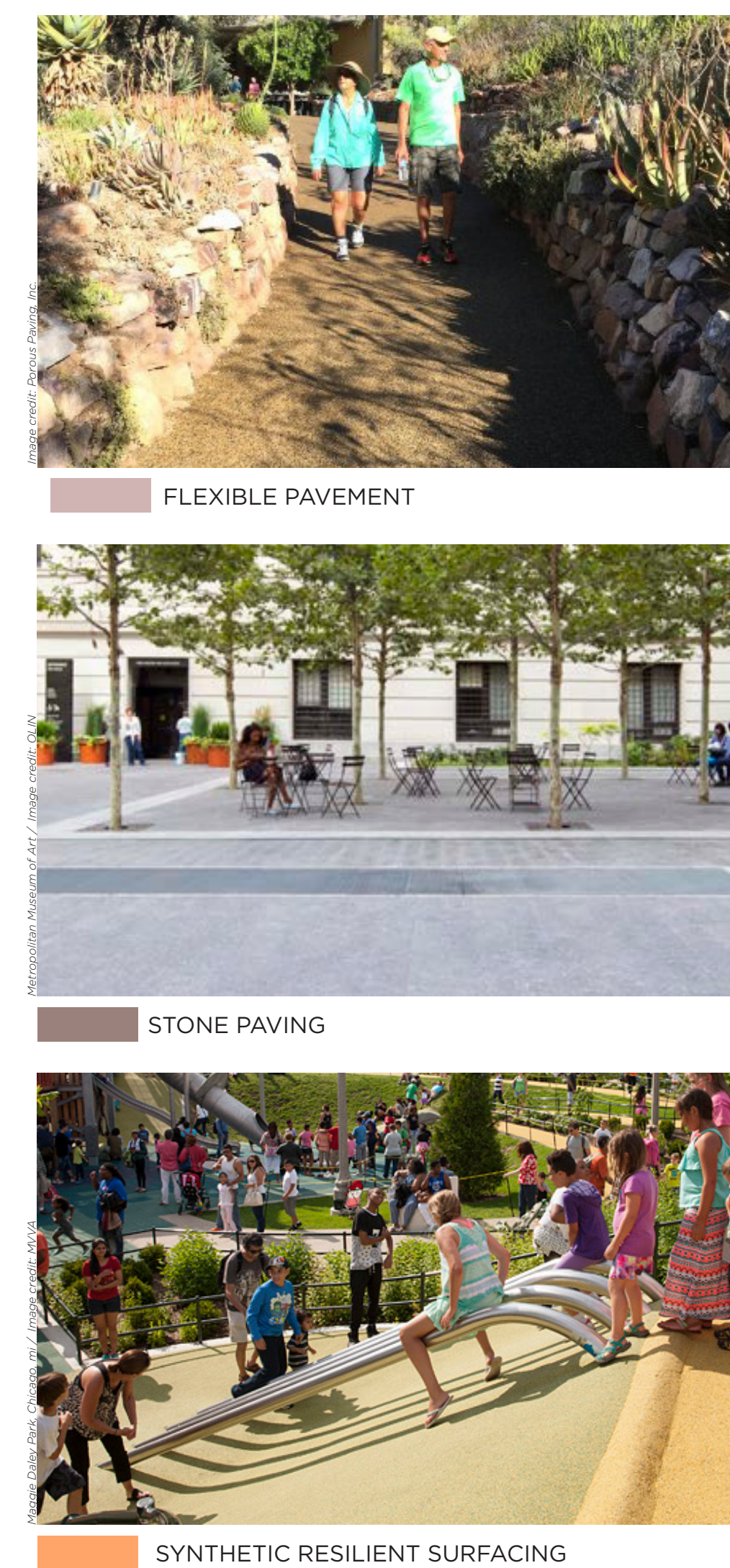


VALLCO TOWN CENTER

PAVING: GREEN ROOF LEVEL



PRECEDENT IMAGES



VALLCO TOWN CENTER

OWNER: VALLCO PROPERTY OWNER LLC
965 PAGE MILL ROAD, PALO ALTO, CA 94304
T. 650-944-1500

ARCHITECTURE: RAFAEL VINOly ARCHITECTS
50 VANDAM STREET, NEW YORK, NY 10013
T. 212-924-5600

ARCHITECTURE: RAFAEL VINOly ARCHITECTS
1833 N. WOLFE ROAD, CUPERTINO, CA 95014
T. 408-627-7900

LANDSCAPE ARCHITECTURE: OLIN PARTNERSHIP LTD.
190 S. INDEPENDENCE MALL W. SUITE 1125, PHILADELPHIA, PA 19106
T. 215-440-0820

CIVIL: SANDS CIVIL ENGINEERS SURVEYORS PLANNERS, INC.
1706 S. WINCHESTER BLVD., SUITE 200, CAMPBELL, CA 95008
T. 408-636-6900

TRANSPORTATION ENGINEERING: ARUP NORTH AMERICA, LTD.
580 MENLO PARK STREET, SUITE 700, SAN FRANCISCO, CA 94105
T. 415-957-9445

LIGHTING: ONE LUX STUDIO
1817 JFK BLVD, SUITE 1065, PHILADELPHIA, PA 19103
T. 215-961-1950

SCIENCE - EXIT
1817 JFK BLVD, SUITE 1065, PHILADELPHIA, PA 19103
T. 215-961-1950

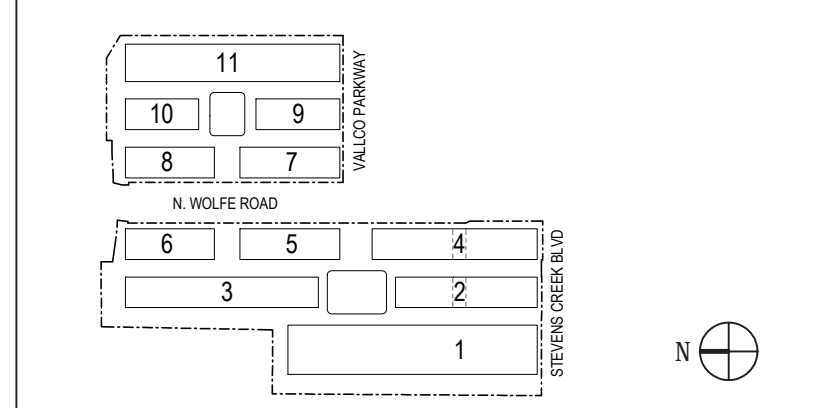
PARKING ENGINEERING: WATRY DESIGN, INC.
2099 GATEWAY PLACE, SUITE 550, SAN JOSE, CA 95110
T. 408-392-7900

NOT FOR CONSTRUCTION

DISCLAIMER
THE ARCHITECT / ENGINEER SHALL HAVE NO RESPONSIBILITY FOR ANY LIABILITY, LOSS, COST, DAMAGE OR EXPENSE ARISING FROM OR RELATING TO ANY USE OF THIS DOCUMENT FOR ANY PURPOSE OTHER THAN ITS INTENDED PURPOSE ON THIS PROJECT. THIS DOCUMENT IS TO BE CONSIDERED IN CONJUNCTION WITH ALL RELATED DOCUMENTATION. ANY DISCREPANCIES IDENTIFIED IN THIS DOCUMENT MUST BE REPORTED IMMEDIATELY TO THE ARCHITECT BEFORE PROCEEDING. CONTRACTORS MUST VERIFY ALL DIMENSIONS PRIOR TO PROCEEDING WITH ANY WORK. ONLY FIGURED DIMENSIONS ARE TO BE USED FOR VERIFICATION.

SB-35 DEVELOPMENT APPLICATION

REV	DESCRIPTION	DATE
REV. 0	SB-35 DEVELOPMENT APPLICATION	08/22/2018



ARCHITECTS PROJECT NUMBER: 709011

PROJECT PHASE: SB-35 DEVELOPMENT APPLICATION

IF THIS DRAWING IS NOT 36" x 48" IT IS A REDUCED PRINT. REFER TO GRAPHIC SCALE

SCALE: NTS

MATERIALS BOARD

SHEET TITLE:

P-0612

SHEET NUMBER: © 2018 RAFAEL VINOly ARCHITECTS PC