

# Share Discovery Through Travel

## **GRAND THEATRE and the ALVISO ADOBE**

Tuesday, February 5  
9:00am-5:00pm



Discover the rich history of the Grand Theatre Center, then on to an included lunch at The Rock House Pub and Grill. Enjoy a tour of the historic Alviso Adobe Community Park to reveal the history of the Ohlone, Rancho, and Dairy periods of the Amador Valley.

Since opening in 1923, the Grand Theatre has been used as a vaudeville venue, a movie theater and a dumping ground.

Today, the 37,000-square-foot theater complex houses the original 584-seat theater and the flexible Studio

Theater, as well as several galleries, studios and classrooms.

We will have a docent-led tour telling us about the historical and architectural elements and a general tour through the center complex.

*There's Still Much More! Turn The Page For Details!*

Alviso.trp/10/12/18

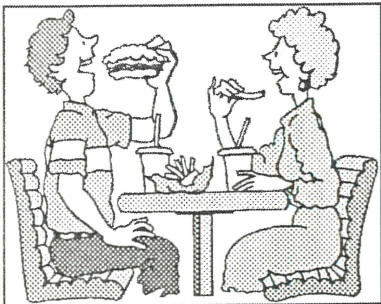


CUPERTINO

**City of Cupertino**  
**Recreation and Community Services Department**  
Creating a Positive, Healthy, and Connected Community

# GRAND THEATRE and the ALVISO ADOBE

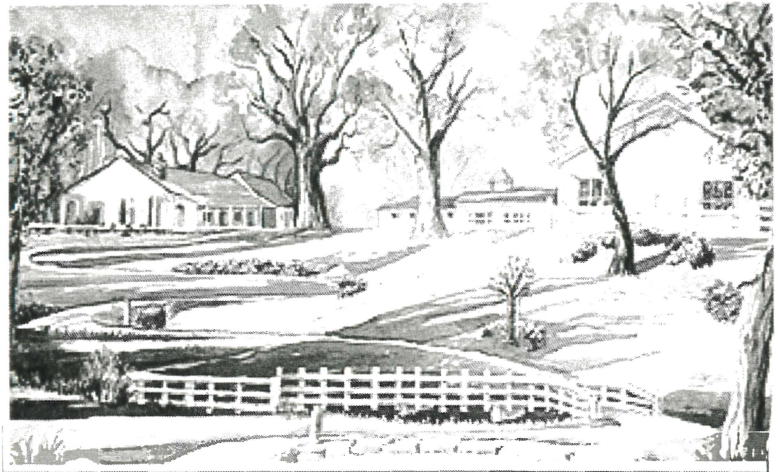
Tuesday,  
February 5  
9:00am-5:00pm



Enjoy lunch at the Rock House Pub and Grill, known for its satisfying menu. Choose from mouth-watering options such as **Drive-thru Burger**, **Grilled Chicken Sandwich** with Mozzarella, tomato, basil, and balsamic sauce, **Fish N' Chips**, or **Mac-N-Cheeses** with gouda gruyere, English white cheddar, parmesan, and cheddar. Finish up with a delectable dessert of **Ghiradelli Brownie a la mode**.

The Alviso Adobe Community Park is a unique site that tells the story of California from its earliest human history.

Our docent led tour of this fully restored interpretive park offers a rare glimpse of the history of Amador Valley, from its Native American beginnings to the days of the Spanish Rancheros to a popular and now a Community Park.



**ACTIVITY LEVEL:** Moderate;  
Walking at your own pace

**COST:**  
**\$93**

**TRIP INCLUDES:** Two Docent-led  
Tours,, Lunch, Transportation, Tips  
and Travel Staff

Itinerary is subject to change.

Please plan to meet at the Cupertino Senior Center 30 minutes prior to departure time.

Cupertino Senior Center  
21251 Stevens Creek Blvd. Cupertino, CA 95014  
Phone: (408) 777-3150 Fax: (408) 777-3156  
[www.cupertino.org/senior](http://www.cupertino.org/senior)