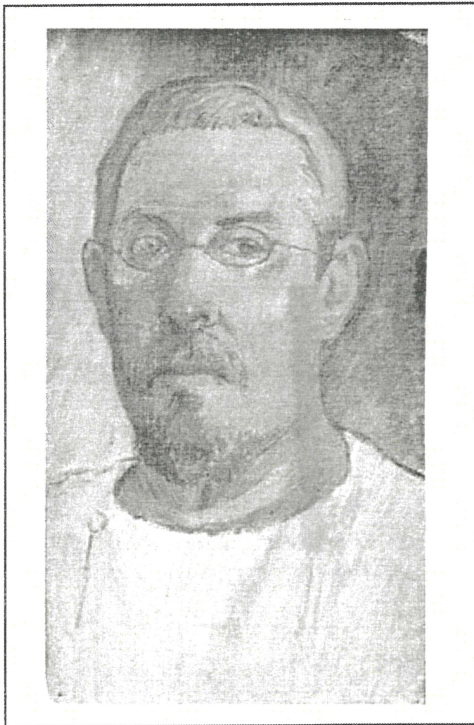


Share Discovery Through Travel

Monet & Gauguin at the de Young

Thursday, February 28, 8:00am-4:30pm

Two special, separate exhibitions featuring works by Claude Monet and Paul Gauguin will be at the de Young Museum. Join us for a chance to explore both of these grand exhibits.



First, enjoy a docent-led tour of *Monet: The Late Years*. During his late years, the well-traveled Monet stayed close to home, inspired by the variety of elements making up his own garden at Giverny. With its evolving scenery of flower beds, footpaths, willows, wisteria, and dymphaea, the garden became a personal laboratory for the artist's concentrated study of natural phenomena.

Boldly balancing representation and abstraction, Monet's radical late works redefined the old master of impressionism as a forebear of modernism.

There's Much More! Turn The Page For Details



City of Cupertino
Recreation and Community Services Department
Creating a Positive, Healthy, and Connected Community

Monet & Gauguin at the de Young

Thursday, February 28, 8:00am-4:30pm

There's More!

An exceptional display of more than fifty Gauguin paintings, wood carvings, and ceramics from the renowned collections of the Ny Carlsberg Glyptotek, Copenhagen, will be on view for the first time in San Francisco.

Enjoy time to peruse *Gauguin: A Spiritual Journey* at your own pace as this exhibition presents these pieces alongside Oceanic art and Gauguin works on paper from the Fine Arts Museums' permanent collections, exploring the intimate relationships that shaped his experiences, his work, and his development as an artist.



You will have time during this artistic day for a no-host lunch at the de Young Cafè. The cafe offers a fresh interpretation of American and European classic cuisine and features menu items crafted with seasonal ingredients from local purveyors and unique menu items themed to the current museum shows.

ACTIVITY LEVEL: Low to moderate;
Walking at your own pace

COST:
\$136

TRIP INCLUDES: One Docent-led
Tour, Admission, Transportation,
Tips and Travel Staff

Itinerary is subject to change.

Please plan to meet at the Cupertino Senior Center 30 minutes prior to departure time.

Cupertino Senior Center
21251 Stevens Creek Blvd. Cupertino, CA 95014
Phone: (408) 777-3150 Fax: (408) 777-3156
www.cupertino.org/senior

monet.trp 9/27/18