

LEHILA
CEMENT

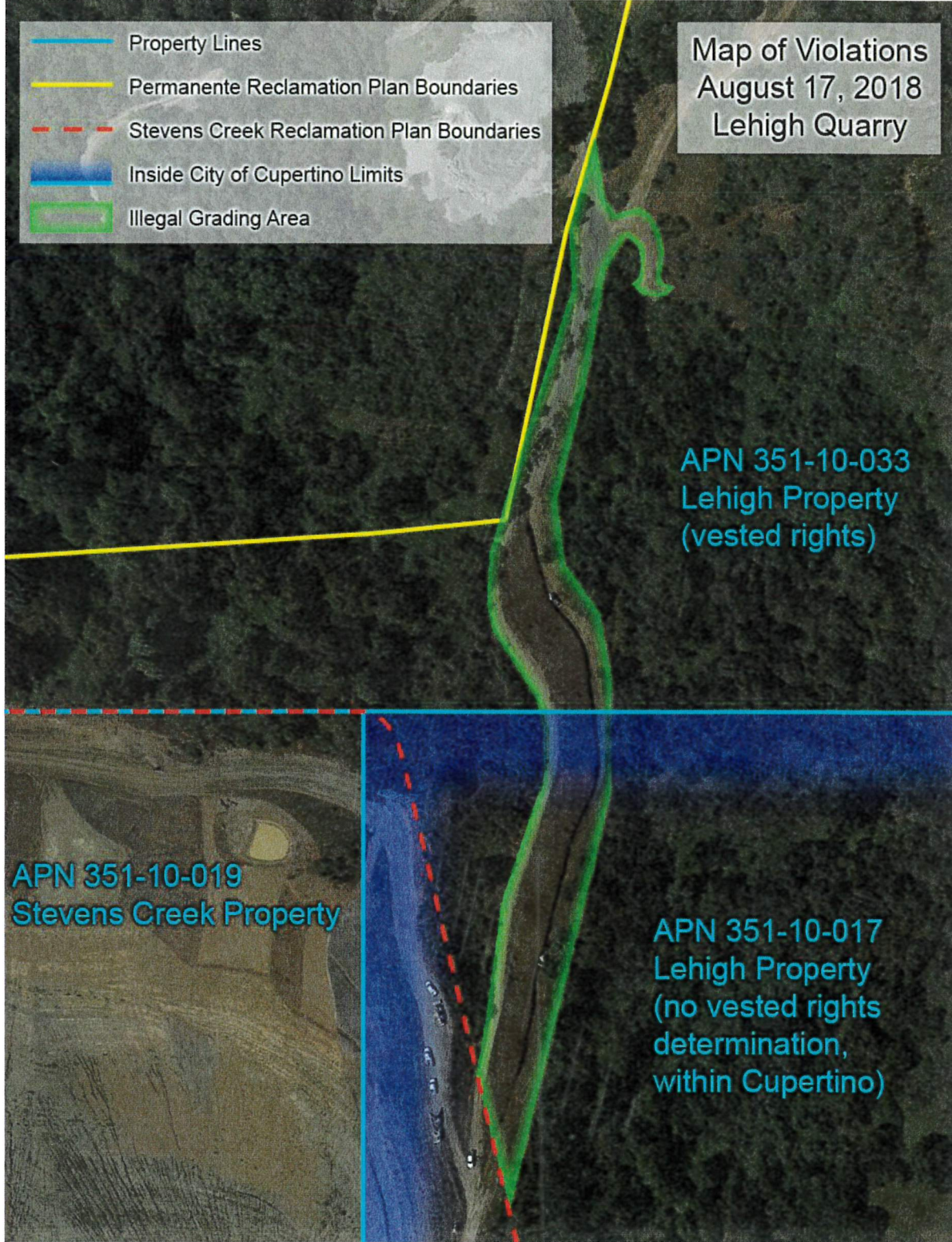
AREA OF
PROPOSED
HAUL ROAD →

City
of
CORVADO

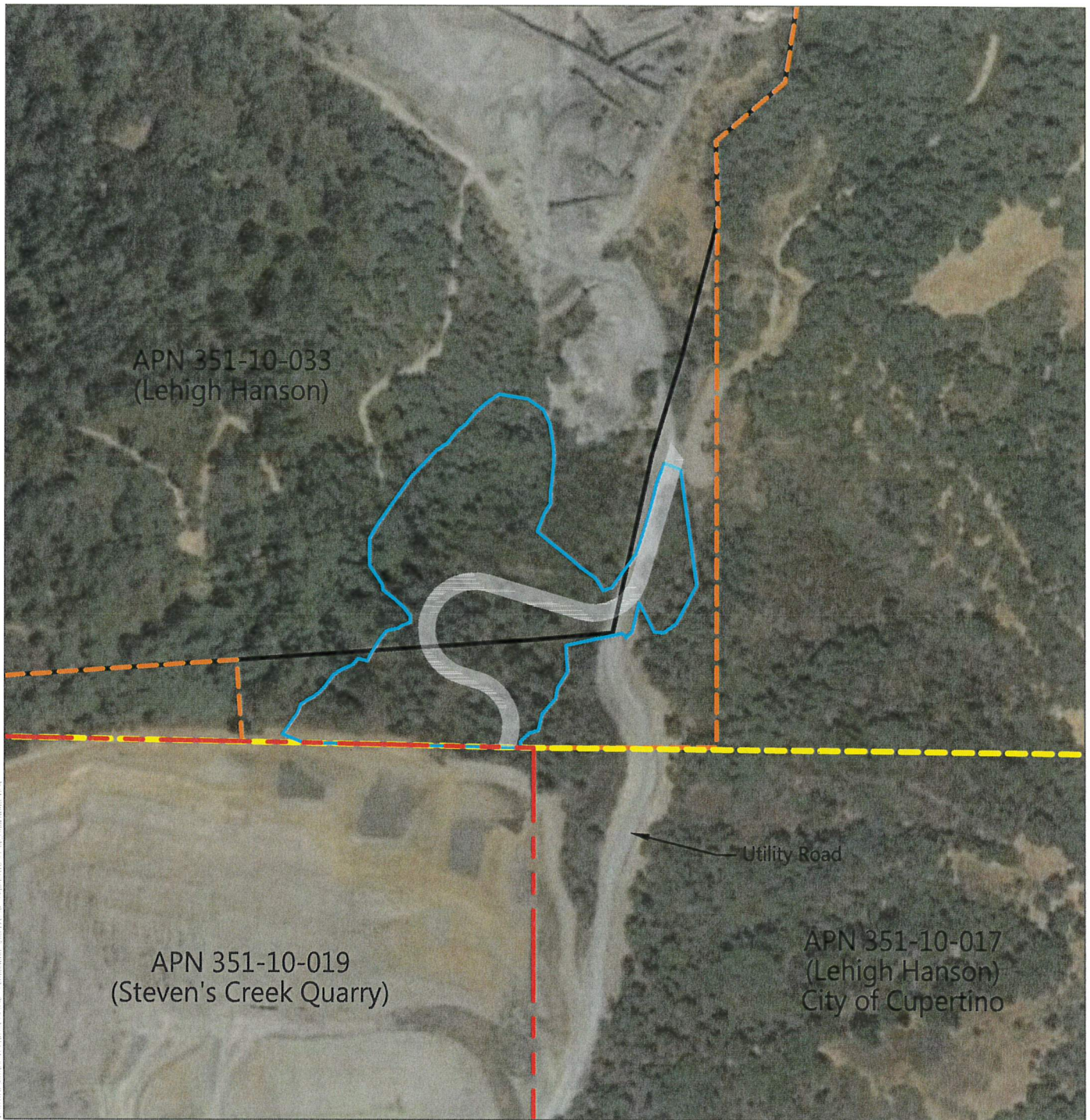
APPROXIMATE
AREA WITHIN
CITY REGULATED
BY COUNTY
PER 2008
AGREEMENT

STEVENS
CREEK
QUARRY





* The lines and areas on this document are for informational purposes only.



SOURCES: AERIAL: Towill, Inc. flown (8-1-2018); SITE BOUNDARY & RECLAMATION BOUNDARIES: Lehigh Southwest Cement Company, generated Nov. 2018; compiled by Benchmark Resources in 2018

NOTES:

1. See Sheet 1 for engineering and surveyor boundaries.



Detail of Haul Road Footprint and Boundary Adjustment

PERMANENTE QUARRY ROCK PLANT HAUL ROAD
RECLAMATION PLAN AMENDMENT

Figure 2

