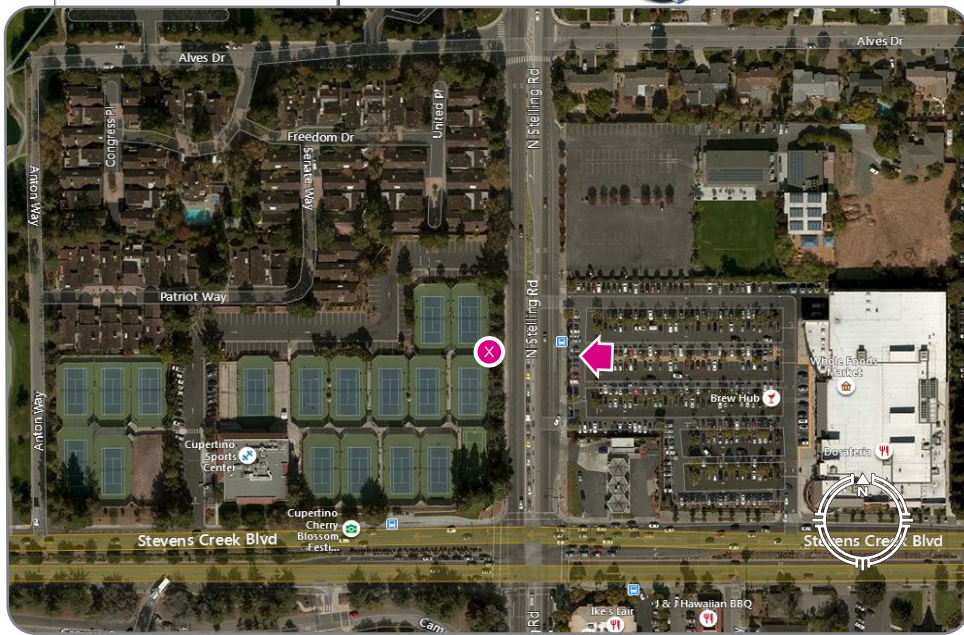


Microsoft® Virtual Earth™

LOCATION



View from the East looking West

EXISTING



PROPOSED



Completed March 23, 2019

CCL04011
CNU4011 Cupertino Sports Park
 21111 Stevens Creek Boulevard
 Cupertino, CA 95014

VIEW 1

APPLICANT
 AT&T Mobility
 5001 Executive Parkway
 San Ramon, CA 94583

CONTACT
 TSJ Consulting Inc.
 Tom Johnson
 27130 Paseo Espada, Suite #A-1426
 San Juan Capistrano, CA 92675
 p 925.785.3727

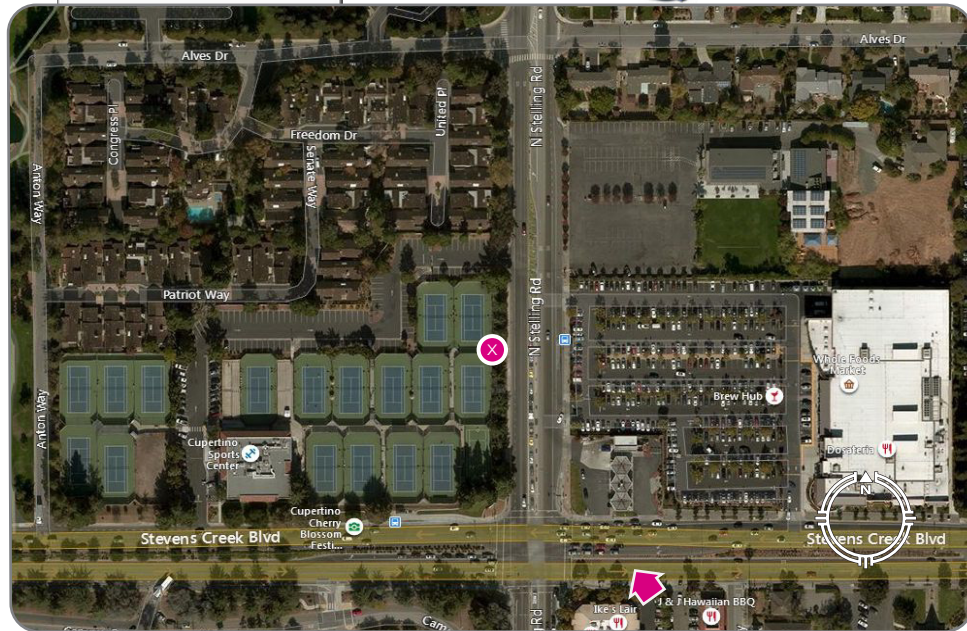


BLUE WATER DESIGN
bluewater-design.net
 michelle@bluewater-design.net
 p 425.615.0944

Photo simulation accuracy is based on information provided to Blue Water Design by the applicant.

Microsoft® Virtual Earth™

LOCATION



View from the Southeast looking Northwest

EXISTING



PROPOSED



Completed March 23, 2019

CCL04011
CNU4011 Cupertino Sports Park
 21111 Stevens Creek Boulevard
 Cupertino, CA 95014

VIEW 2

APPLICANT

AT&T Mobility
 5001 Executive Parkway
 San Ramon, CA 94583

CONTACT

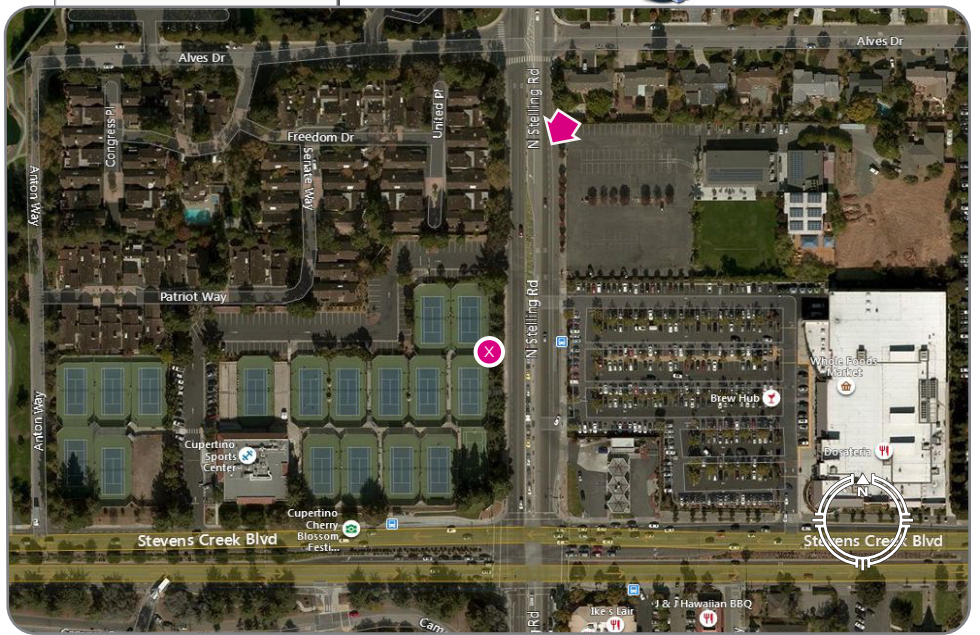
TSJ Consulting Inc.
 Tom Johnson
 27130 Paseo Espada, Suite #A-1426
 San Juan Capistrano, CA 92675
 p 925.785.3727



BLUE WATER DESIGN
bluewater-design.net
 michelle@bluewater-design.net
 p 425.615.0944

Microsoft® Virtual Earth™

LOCATION



View from the Northeast looking Southwest

EXISTING



PROPOSED



Completed March 23, 2019

CCL04011
CNU4011 Cupertino Sports Park
 21111 Stevens Creek Boulevard
 Cupertino, CA 95014

VIEW 3

APPLICANT
 AT&T Mobility
 5001 Executive Parkway
 San Ramon, CA 94583

CONTACT
 TSJ Consulting Inc.
 Tom Johnson
 27130 Paseo Espada, Suite #A-1426
 San Juan Capistrano, CA 92675
 p 925.785.3727



BLUE WATER DESIGN
bluewater-design.net
 michelle@bluewater-design.net
 p 425.615.0944

Photo simulation accuracy is based on information provided to Blue Water Design by the applicant.