

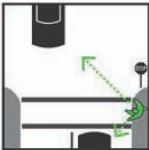
Share the road safely with all other users, no matter how you choose to get to and from school. Use extra caution near younger students walking or biking to school.

**Obey adult crossing guards.** They are there to help everyone cross congested intersections safely.

### Walk or Skate Safely



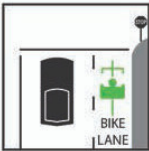
**Don't assume drivers see you.** Make eye contact before crossing intersections.



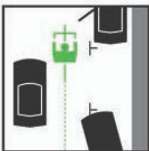
**Be alert.** Look for cars coming from all directions before entering the street - including behind you.

**Cross at corners and crosswalks.** This is where drivers expect pedestrians.

### Bike Safely



**Be predictable.** Obey ALL stop signs and traffic signals. Never ride wrong way. The best way to avoid crashes as well as traffic tickets is to follow the same rules of the road as apply to car drivers.



**Be alert.** Watch out for drivers turning left or right, or coming out of driveways. Avoid car doors opening in front of you by riding out of the door zone. Yield to pedestrians.



**Wear your helmet and buckle it every time.** It's the law if you are under 18, and wise at any age. To best protect your brain, your helmet must fit properly: snug and level on your head, just above your eyebrows.



**Be visible.** Use a bright headlight and taillight at night.

**Avoid texting, phone calls, or music while biking.**

## Family Tips for Safe Driving

1. Do not drop off students at intersections
2. Do not let students out in the street or in bike lanes
3. Slow down and use extra caution in school zones and along commute routes
4. Signal your turns and yield to pedestrians
5. No idling in school drop off loop. Please turn off your engine.
6. Follow all posted signs for turning directions coming out of drop off locations
7. Don't make u-turns and other unsafe maneuvers that put other road users at risk
8. Avoid texting, phone calls, and other distractions while driving

We welcome volunteers to help with Safe Routes 2 School events and programs at this school! E-mail: [saferoutes@cupertino.org](mailto:saferoutes@cupertino.org)

City of Cupertino  
Safe Routes to School  
[www.cupertino.org/saferoutes](http://www.cupertino.org/saferoutes)



# KENNEDY MIDDLE SCHOOL

Suggested Routes



CUPERTINO

# Kennedy Middle School

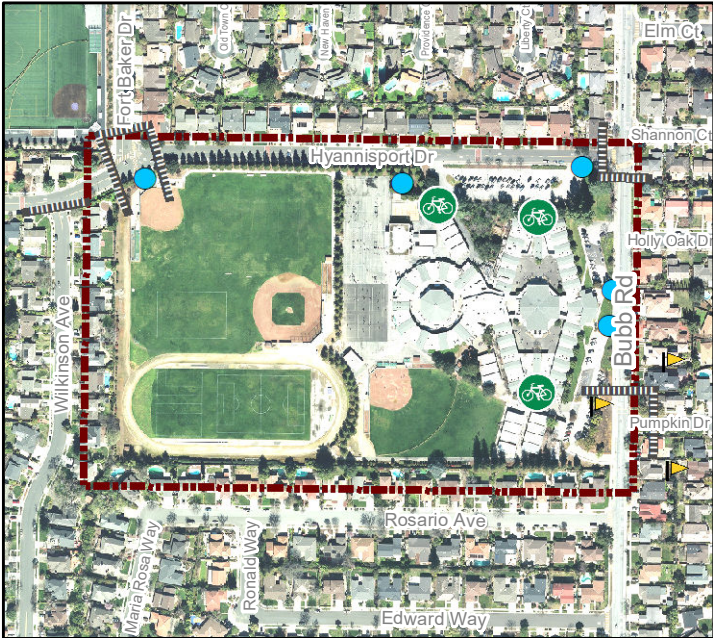
## Suggested Routes to School

### About Safe Routes 2 School:

Cupertino Safe Routes 2 School is a partnership program between the City of Cupertino, Cupertino Schools, Fremont Union High School District, Cupertino Union School District, and the Santa Clara County Sheriff's office. We aim to reduce traffic and pollution and increase safety by bringing people together to craft solutions to the impending traffic concerns facing our community.

- Pedestrian and Bike Access
- Bike Parking
- Crossing Guard
- ▲ Pedestrian Flags
- Traffic Signals
- Suggested Route (Bike or Walk)
- Est Walking Time (Bike Time)
- Crosswalks
- Bike Lane
- Bike Route
- City Boundary

\*Use sidewalks and crosswalks when available



### Contact Us:

For more information or ways to get involved, visit: [cupertino.org/saferoutes](http://cupertino.org/saferoutes) or email [saferoutes@cupertino.org](mailto:saferoutes@cupertino.org)

