

# LET'S TRAVEL TO JAPAN!

I. MATCH THE LANDMARKS USING THE FOLLOWING CHOICES:

- \_\_\_ MOUNT FUJI
- \_\_\_ TOKYO TOWER
- \_\_\_ GOLDEN TEMPLE

- \_\_\_ THE GREAT BUDDHA OF KAMAKURA
- \_\_\_ KYOTO IMPERIAL PALACE



**HOKKAIDO**

**OKINAWA**

**TOKYO**

**BUDHA**

**A**

**B**

**C**

**D**

**E**

- I. ANSWERS:  
 A. GOLDEN TEMPLE  
 B. KYOTO IMPERIAL PALACE  
 C. TOKYO TOWER  
 D. THE GREAT BUDDHA OF KAMAKURA  
 E. MOUNT FUJI

II. FILL-IN-THE-BLANK?

1. KNOWN IN THE WEST AS THE \_\_\_\_\_, THE SHINKANSEN IS A HIGH SPEED INTER CITY TRAIN IN JAPAN.
2. \_\_\_\_\_, ALSO KNOWN AS SAKURA, IS AN IMPORTANT SYMBOL FOR THE JAPANESE PEOPLE AS IT REPRESENTS THE END OF WINTER AND THE BEGINNING OF NEW LIFE AND THE GROWING SEASON OF SPRING.
3. \_\_\_\_\_ REFERS TO A LONG ROBE WITH WIDE SLEEVES TRADITIONALLY WORN WITH A BROAD SASH AS AN OUTER GARMENT BY THE JAPANESE.

- II. ANSWERS:  
 1. BULLET TRAIN  
 2. CHERRY BLOSSOMS  
 3. KIMONO

education.com Copyright © 2012-2013 by Education.com

More worksheets at [www.education.com/worksheets](http://www.education.com/worksheets)





## Connecting with Communities

### Around the World!

Did you know Cupertino has a sister city in Japan?

The City of Cupertino has four established Sister City relationships.

Toyokawa, Japan is one of them!

A Sister City relationship is a long-term, formal agreement that may include cultural, educational, business, and technical exchanges. These can include visits by delegations of civic and business leaders, student exchange programs, and cultural events.



# Fun Facts

About 60% of all animated shows are produced in Japan!



More paper is used to print comics than to print toilet paper.

Mount Fuji is the highest and tallest volcano in Japan.



Tokyo is one of the world's most populous cities.



## Kimono

A traditional Japanese garment that come in different styles and patterns.

They are hand-sewn into a T shape from 4 pieces of fabric called tans and tied with a obi (belt).



**Official Name:** Japan

**Capital:** Tokyo

**Continent:** Asia

**Population:** 126,500,000 million people

**Official Language:** Japanese

**Money:** Japanese yen

# Geography

- ⇒ Japan is an archipelago or in other words a string of islands.
- ⇒ It is in the eastern coast of Asia.
- ⇒ There are 4 Main Islands: Hokkaido, Honshu, Shikoku and Kyushu.
- ⇒ Honshu is the largest of the four.
- ⇒ In addition to those 4 main islands there are 4,000 smaller islands.



- ⇒ Almost four-fifths of Japan is covered with mountains.
- ⇒ Japan has about 200 volcanoes; 60 of them are active volcanoes!

- ⇒ The highest peak and most famous mountain is Mount Fuji.
- ⇒ Mount Fuji is a sleeping volcano which last erupted in 1707.



# Art

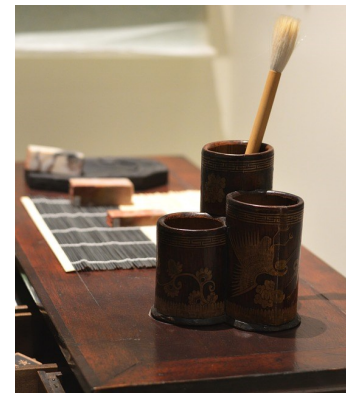
## IKEBANA

- ⇒ Is the art of arranging flowers, blossoms, branches, leaves and stems.
- ⇒ It is also known as Kadō.



## CALLIGRAPHY

- ⇒ Also called Shūji.
- ⇒ The art of writing by hand to create letters or symbols using a brush dipped in ink.
- ⇒ First introduced to Japan by China in the 6th century.



## UKIYO-E

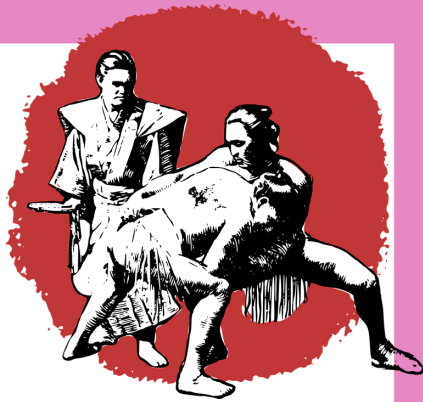
- ⇒ Paintings and woodblock prints showing the everyday life and interest of Japanese people.



# Sports

## SUMO

- ⇒ Sumo is the national sport of Japan..
- ⇒ The highest-ranking sumo wrestler
- ⇒ Each year six major sumo tournaments are held across the county.
- ⇒ Gained popularity in the late 17th century in Tomioka



## BASEBALL

- ⇒ Many consider baseball the unofficial national sport.
- ⇒ Known as yakyu or puro yakyu
- ⇒ In 1936 a professional league was established.
- ⇒ Popular teams include the Yomiui Giants and the Hanshin Tigers.
- ⇒ In Japan the baseball bat, playing field and strike zone are smaller.

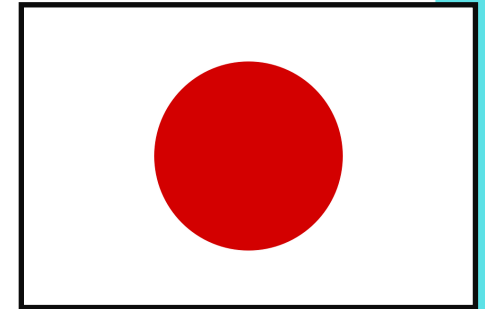
## OLYMPICS

- ⇒ Japan hosted the Summer Olympics in 1964.
- ⇒ They will host the summer Olympics again in 2020.



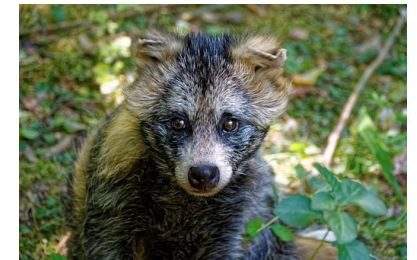
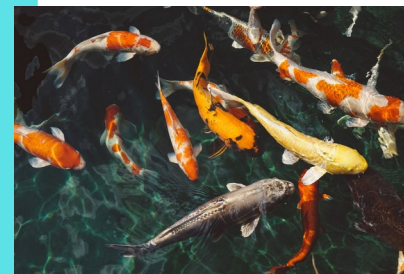
# Flag

- ⇒ The flag was first adopted in 1870.
- ⇒ The current design of the flag became the National Flag in 1999.
- ⇒ Japan's flag consists of a white background with a red disk in the center.
- ⇒ The red disk in the center represents the sun.



# National Symbols

- ⇒ **Animal:** Tanuki (Japanese Raccoon dog)
- ⇒ **Fish:** Koi
- ⇒ **Bird:** Green pheasant, Red-crowned crane



# Food



- ⇒ Japanese food consists of lots of rice (Gohan), fish, soy products and vegetables .
- ⇒ Several kinds of noodles (udon, soba and ramen) are very popular light meals.
- ⇒ Japanese people consume more fish than meat.

## **RAMEN**

Wheat noodles served in fish-based or meat broth, flavored with soy sauce or miso topped with sliced pork, nori, or scallions.



## **SUSHI**

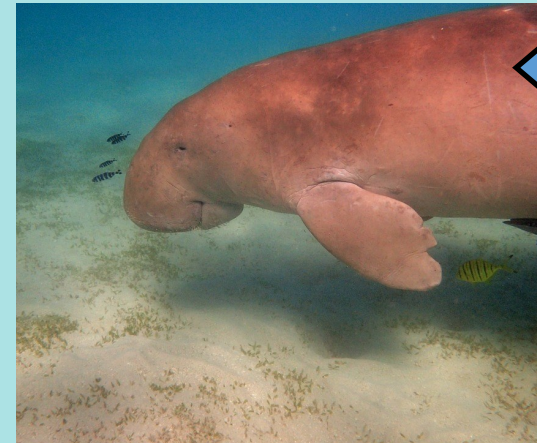
Raw fish wrapped in rice and seaweed.

## **MISO SOUP**

Soup made from stock called “dashi” mixed with miso paste.

## **TEMPURA**

A light and crispy deep fried vegetables, fish or seafood.



## **DUGONG**

- ⇒ The dugong has a large body and thick but smooth skin.
- ⇒ At birth they have a pale color but as they get older their color darkens.
- ⇒ It is referred as a sea cow because it eats sea grass.

## **JAPANESE MACAQUE**

- ⇒ Also called snow monkey.
- ⇒ They have a pinkish face with brown grey or yellow brown fur.
- ⇒ They are omnivorous who eat plants, insects and soil.



## **JAPANESE GIANT SALAMANDER**

- ⇒ Also known as Ōsanzhōu, meaning giant pepper fish.
- ⇒ It is the second largest salamander species in the world.
- ⇒ They can grow up to 5 feet long.

# Animals

⇒ Japan has 153 species of mammals in the country; 700 bird species, and 300 species of fish.

## TANUKI



- ⇒ Also known as the Japanese Raccoon dog.
- ⇒ The average adult weighs between 10–20 pounds.
- ⇒ They have thick fur, black-tipped bushy tail and short rounded ears.

## RED-CROWNED CRANE

⇒ A large crane known as a symbol of luck and longevity.

- ⇒ It is snow white in color with black on the lower parts of the wings.
- ⇒ Males have black cheeks, throats and necks while, females are gray in those spots.
- ⇒ They feed on rice, carrots and water plants.



## YAKITORI

Bite-sized chicken cubes grilled on a skewer often dipped into a salty soy sauce.



## YAKITON

-Pork cubes on skewers.

## UDON

A dense and chewy noodles made from wheat flour. Udon noodles can be eaten hot or cold and customized with many toppings.

## SOBA

Made from buckwheat flour. It is a long thin noodle that can be served in a hot broth or chilled with a dipping sauce.

## TAIYAKI

A fish-shaped sweet treat with various fillings.



## MOCHI

A rice cake made of mochigome, a short-grain japonica glutinous rice. The rice is pounded into paste and molded into a desired shape.

# Holidays



## HINAMATSURI

- ⇒ Or Doll's festival is celebrated on March 3.
- ⇒ This day is to wish happiness, health and growth to girls in Japanese families.
- ⇒ Displays of dolls are placed inside the house.

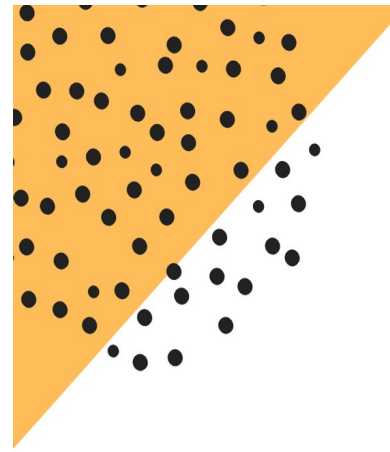
## KODOMO NO HI

- ⇒ Or Children's Day is celebrated on May 5.
- ⇒ Families celebrate the healthy growth and happiness of children.
- ⇒ Huge Koinobori are hung outside the house.



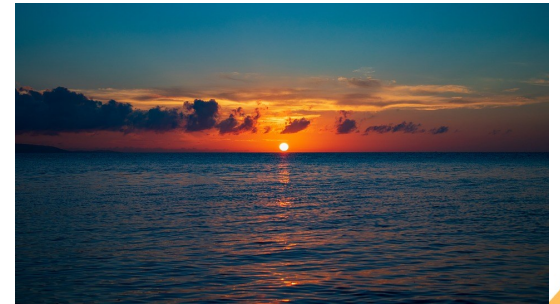
## KEIRO NO HI

- ⇒ Or Respect for the Aged day is celebrated on the third Monday of September.
- ⇒ Day to honor and celebrate the elderly.



## UMI NO HI

- ⇒ Or Ocean Day celebrated on the third Monday of July.
- ⇒ A day to celebrate the ocean.
- ⇒ Families take trips to the beach, enjoy firework displays by the sea and enjoy seafood.



## YAMA NO HI

- ⇒ Or Mountain Day is celebrated in August.
- ⇒ Day to honor the mountains and ecosystem of Japan.
- ⇒ First introduced in 2014.

## TANABATA

- ⇒ Or Star Festival is celebrated on July 7.
- ⇒ Long, narrow strips of colorful paper known as tanzaku are hung from bamboo branches.
- ⇒ Wishes are written on the tanzaku

