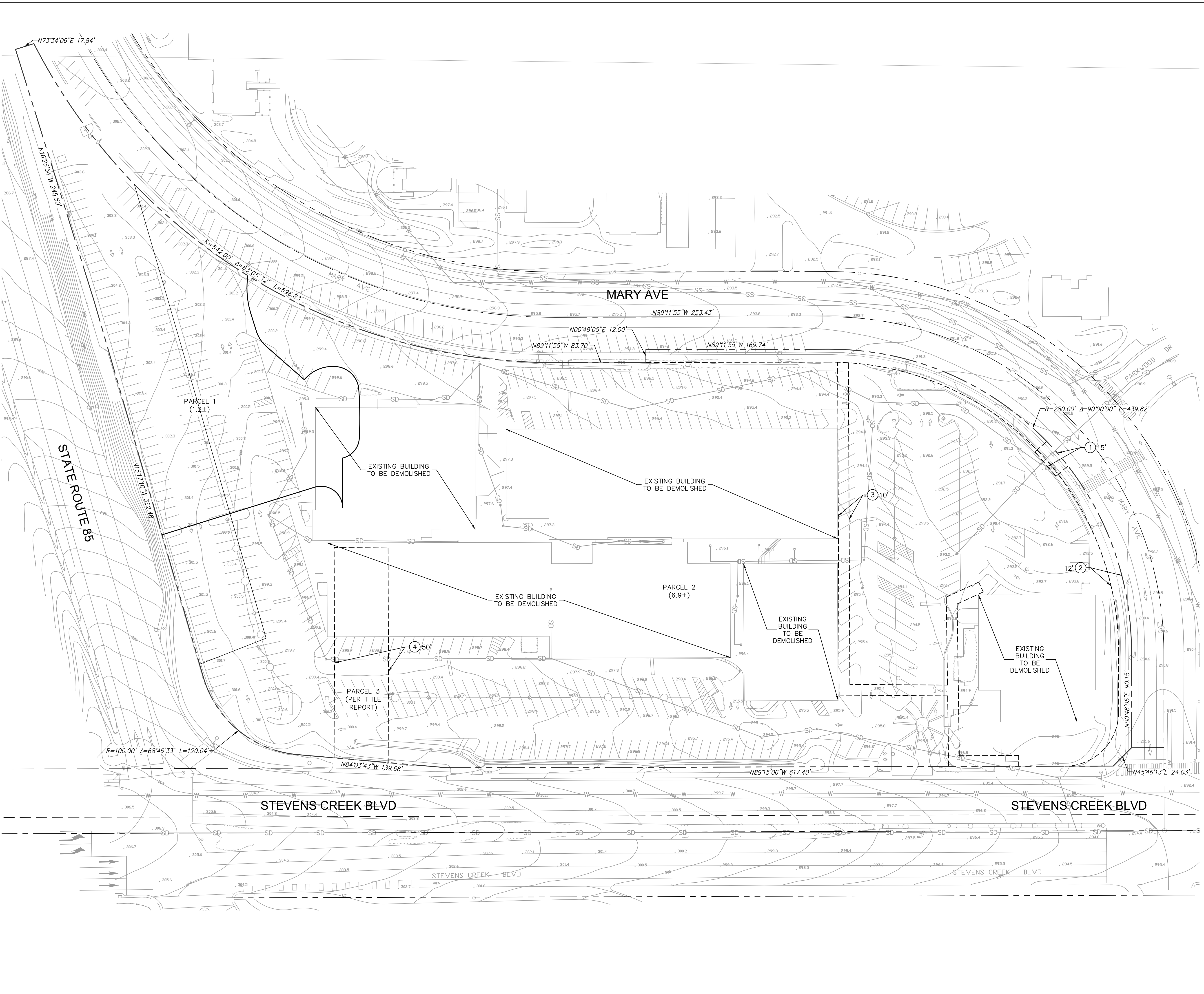


Plotted By: Sinha, Medha Sheet Set: KHA Layout: VTM-2 EXISTING CONDITIONS May 05, 2020 01:08:28pm K: S:\C-PLAN\097817001 - the oaks-kt properties-city of cupertino-kt\plan\sheet\ventative map\02 Existing Conditions_VTM - 097817001.dwg
 This document, together with the concepts and designs presented herein, is intended only for the specific purpose and client for which it was prepared. Reuse of and improper reliance on this document without written authorization and adaptation by Kimley-Horn and Associates, Inc. shall be without liability to Kimley-Horn and Associates, Inc.



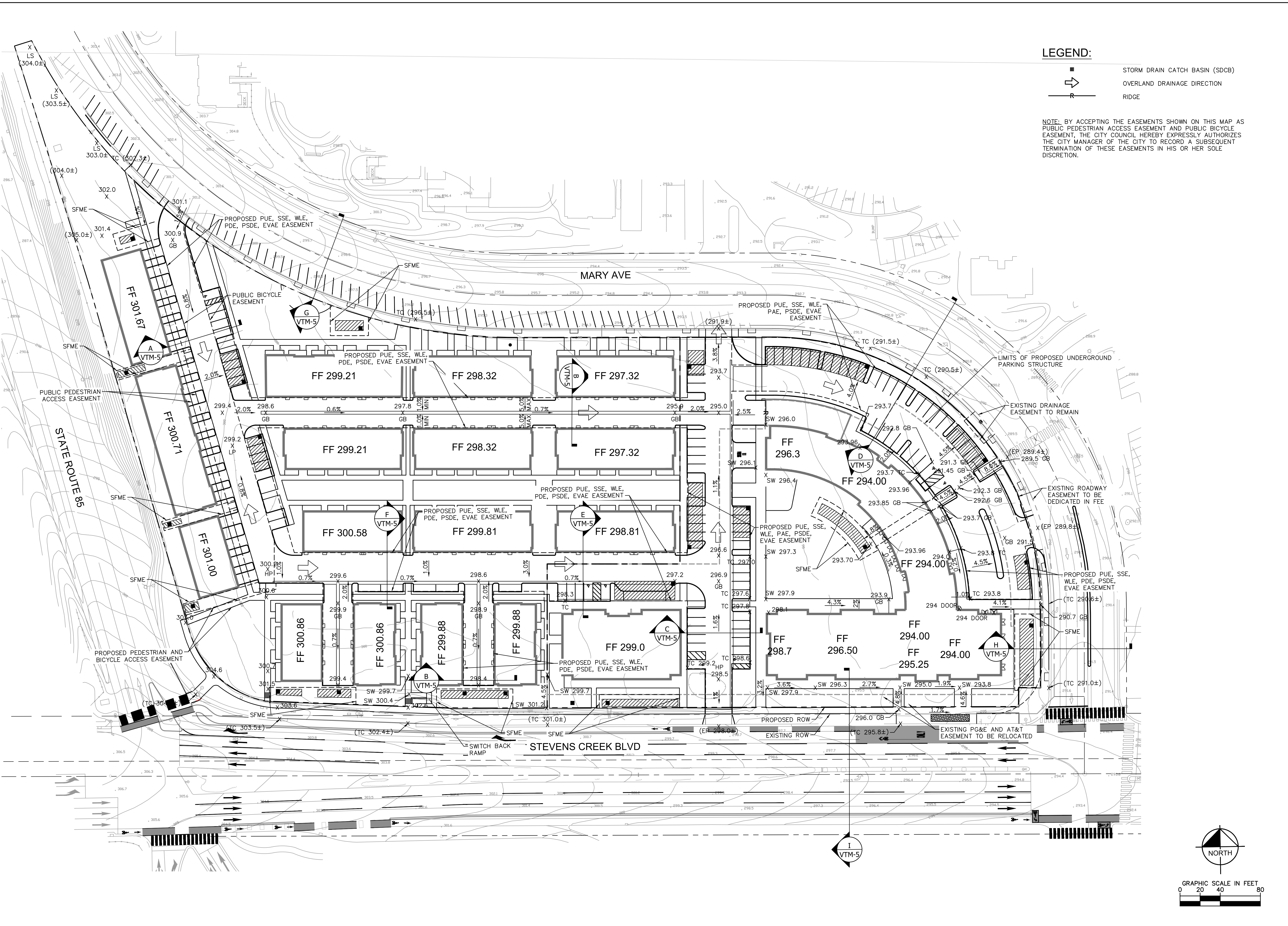
LEGEND

SS	SANITARY SEWER
SD	STORM DRAIN
W	WATER
---	LOT LINE
- - - -	EASEMENT
---	PROPERTY LINE

- NOTES**
- BASED UPON TITLE REPORT NO. NCS-758530-SC, DATED OCTOBER 13, 2015 AND PREPARED BY FIRST AMERICAN TITLE COMPANY.
- EASEMENT FOR DRAINAGE PURPOSES RECORDED OCTOBER 16, 1964 IN BOOK 6704, PAGE 688 O.R., RELINQUISHMENT OF EASEMENT RIGHTS TO THE CITY OF CUPERTINO RECORDED AUGUST 6, 1968 IN BOOK 8217, PAGE 613 O.R.
 - EASEMENT FOR PUBLIC ROADWAY AND UTILITIES RECORDED FEBRUARY 16, 1972 IN BOOK 9706, PAGE 155, O.R.
 - EASEMENT FOR PACIFIC GAS & ELECTRIC CO. AND PACIFIC TELEPHONE AND TELEGRAPH CO. RECORDED AUGUST 24, 1972 IN BOOK 9988, PAGE 71, O.R., NOTICE OF FINAL DESCRIPTION RECORDED MARCH 6, 1975 INK BOOK B307, PAGE 583, O.R.
 - DOCUMENT ENTITLED 'EASEMENT GRANT' RECORDED APRIL 25, 2012 AS INST. NO. 21637501, O.R.

<p>© 2017 KIMLEY-HORN AND ASSOCIATES, INC. 765 THE CITY DRIVE, SUITE 200, ORANGE, CA 92668 PHONE: 714-939-1030 FAX: 714-936-9488 WWW.KIMLEY-HORN.COM</p>		REVISIONS	DATE	BY
<p>KHA PROJECT 097817001 DATE 05/05/2020 SCALE AS SHOWN DESIGNED BY BH/KN DRAWN BY INI CHECKED BY MF</p>		<p>EXISTING CONDITIONS</p>		
<p>WESTPORT PREPARED FOR KT URBAN</p>		<p>CUPERTINO CA</p>		
<p>SHEET NUMBER VTM-2</p>		<p>GRAPHIC SCALE IN FEET 0 20 40 80</p>		

Plotted By: Sinha, Medha Sheet Set: VTM-3 GRADING AND DRAINAGE PLAN May 05, 2020 01:08:35pm K:\SAC_PLAN\097817001 - the oak-kat properties-city of cupertino-vtm-3 Grading & Drainage_VTM - 097817001.dwg
 This document, together with the concepts and designs presented herein, is intended only for the specific purpose and client for which it was prepared. Reuse of and improper reliance on this document without written authorization and adaptation by Kimley-Horn and Associates, Inc. shall be without liability to Kimley-Horn and Associates, Inc.



LEGEND:

- STORM DRAIN CATCH BASIN (SDCB)
- OVERLAND DRAINAGE DIRECTION
- RIDGE

NOTE: BY ACCEPTING THE EASEMENTS SHOWN ON THIS MAP AS PUBLIC PEDESTRIAN ACCESS EASEMENT AND PUBLIC BICYCLE EASEMENT, THE CITY COUNCIL HEREBY EXPRESSLY AUTHORIZES THE CITY MANAGER OF THE CITY TO RECORD A SUBSEQUENT TERMINATION OF THESE EASEMENTS IN HIS OR HER SOLE DISCRETION.

No.	REVISIONS	DATE	BY

Kimley-Horn

© 2017 KIMLEY-HORN AND ASSOCIATES, INC.
 765 THE CITY DRIVE, SUITE 200, ORANGE, CA 92668
 PHONE: 714-939-1030 FAX: 714-939-9488
 WWW.KIMLEY-HORN.COM

KHA PROJECT	DATE	SCALE	AS SHOWN	DESIGNED BY	DRAWN BY	CHECKED BY
097817001	05/05/2020	AS SHOWN		BH/KN		

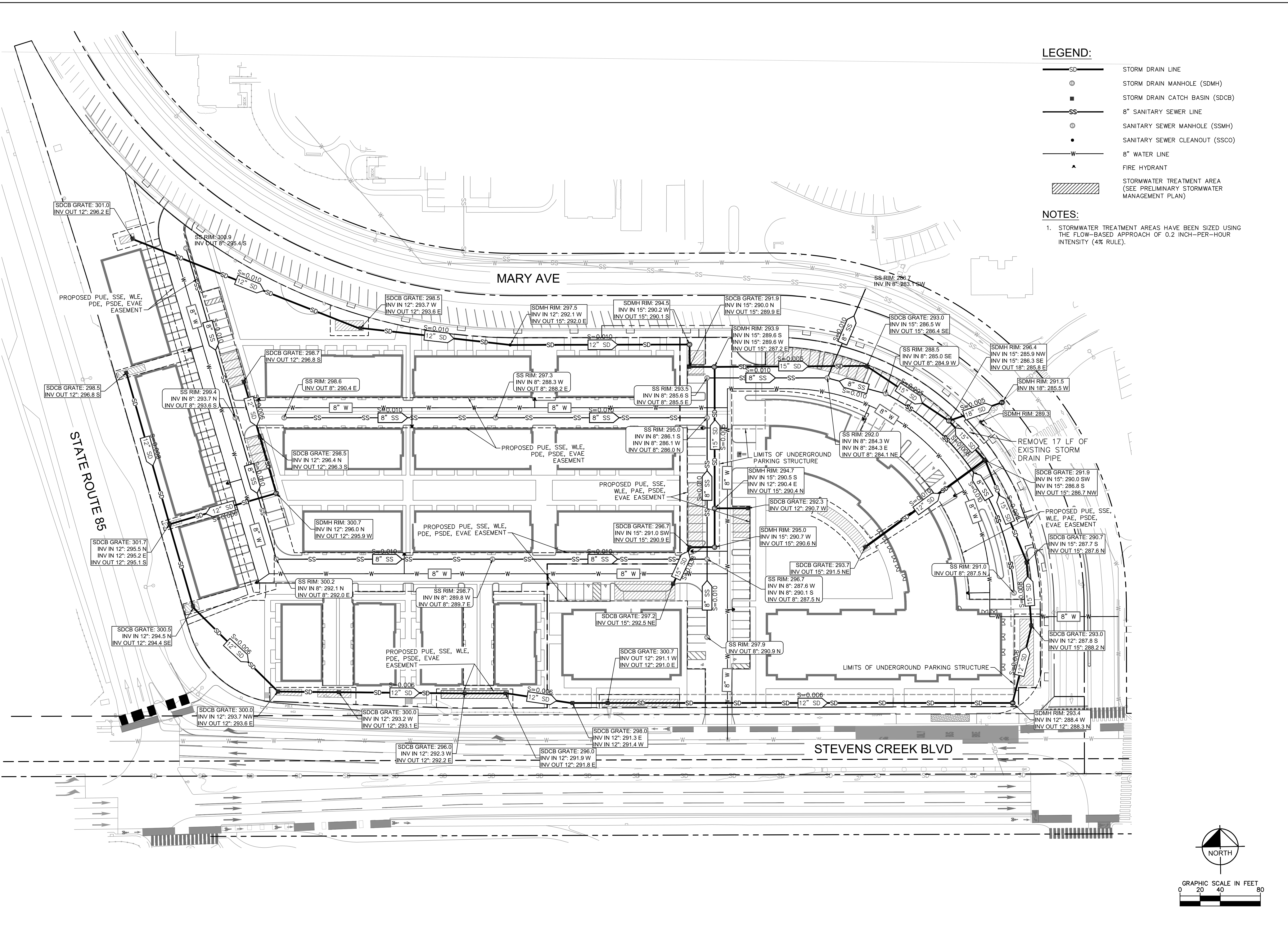
GRADING AND DRAINAGE PLAN

WESTPORT
 PREPARED FOR
 KT URBAN

CUPERTINO CA

SHEET NUMBER
VTM-3

Plotted By: Sinha, Medha Sheet Set: VTM-4 UTILITY PLAN May 05, 2020 01:08:46pm K:\S\C_PLAN\097817001 - the oaks-kt-properlies-city of cupertino-wa\CAD\plansheets\ventative_msp\C4 Utility Plan_VTM - 097817001.dwg
 This document, together with the concepts and designs presented herein, is intended only for the specific purpose and client for which it was prepared. Reuse of and improper reliance on this document without written authorization and adaptation by Kimley-Horn and Associates, Inc. shall be without liability to Kimley-Horn and Associates, Inc.



- LEGEND:**
- SD STORM DRAIN LINE
 - ⊙ STORM DRAIN MANHOLE (SDMH)
 - STORM DRAIN CATCH BASIN (SDCB)
 - SS 8" SANITARY SEWER LINE
 - ⊙ SANITARY SEWER MANHOLE (SSMH)
 - SANITARY SEWER CLEANOUT (SSCO)
 - W 8" WATER LINE
 - ▲ FIRE HYDRANT
 - ▨ STORMWATER TREATMENT AREA (SEE PRELIMINARY STORMWATER MANAGEMENT PLAN)
- NOTES:**
1. STORMWATER TREATMENT AREAS HAVE BEEN SIZED USING THE FLOW-BASED APPROACH OF 0.2 INCH-PER-HOUR INTENSITY (4% RULE).

No.	REVISIONS	DATE	BY

Kimley-Horn
 © 2017 KIMLEY-HORN AND ASSOCIATES, INC.
 765 THE CITY DRIVE, SUITE 200, ORANGE, CA 92668
 PHONE: 714-939-1030 FAX: 714-936-9488
 WWW.KIMLEY-HORN.COM

KHA PROJECT	097817001
DATE	05/05/2020
SCALE	AS SHOWN
DESIGNED BY	BH/KN
DRAWN BY	INI
CHECKED BY	MF

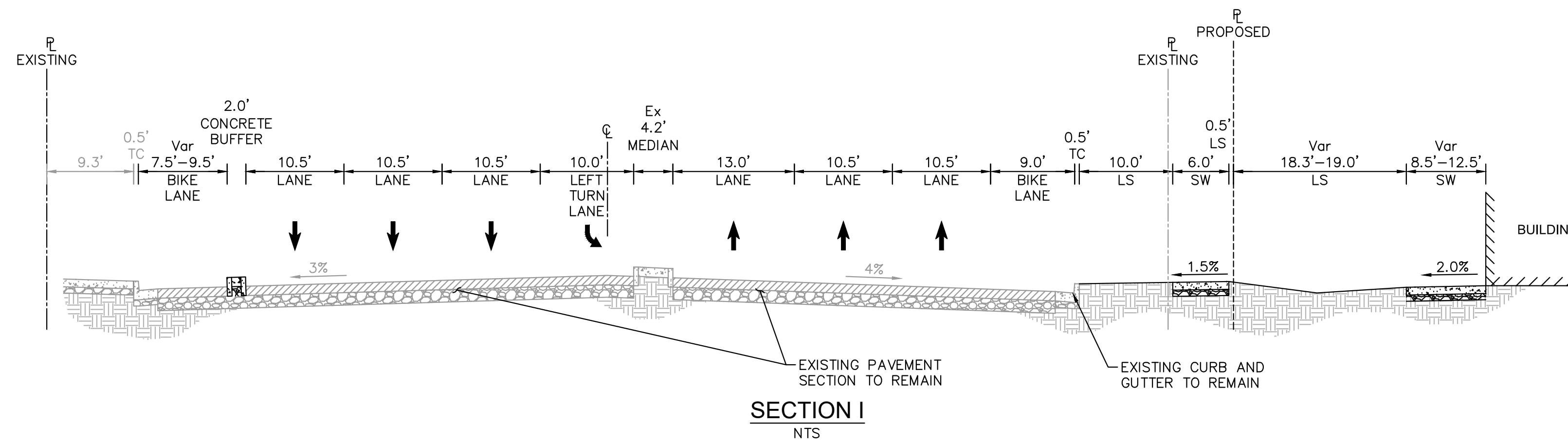
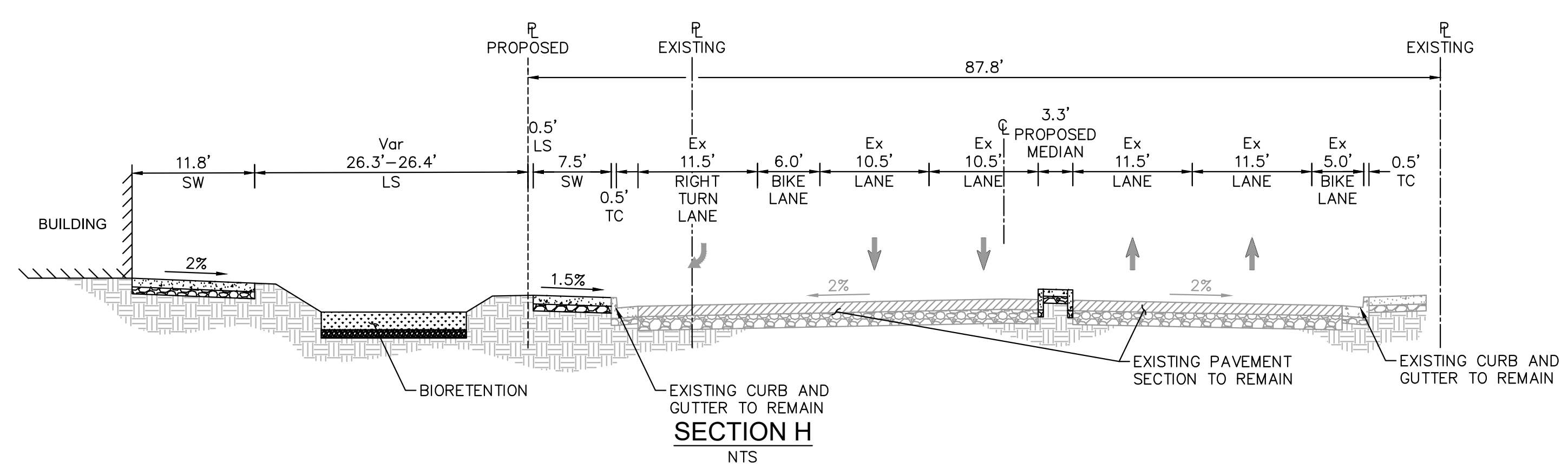
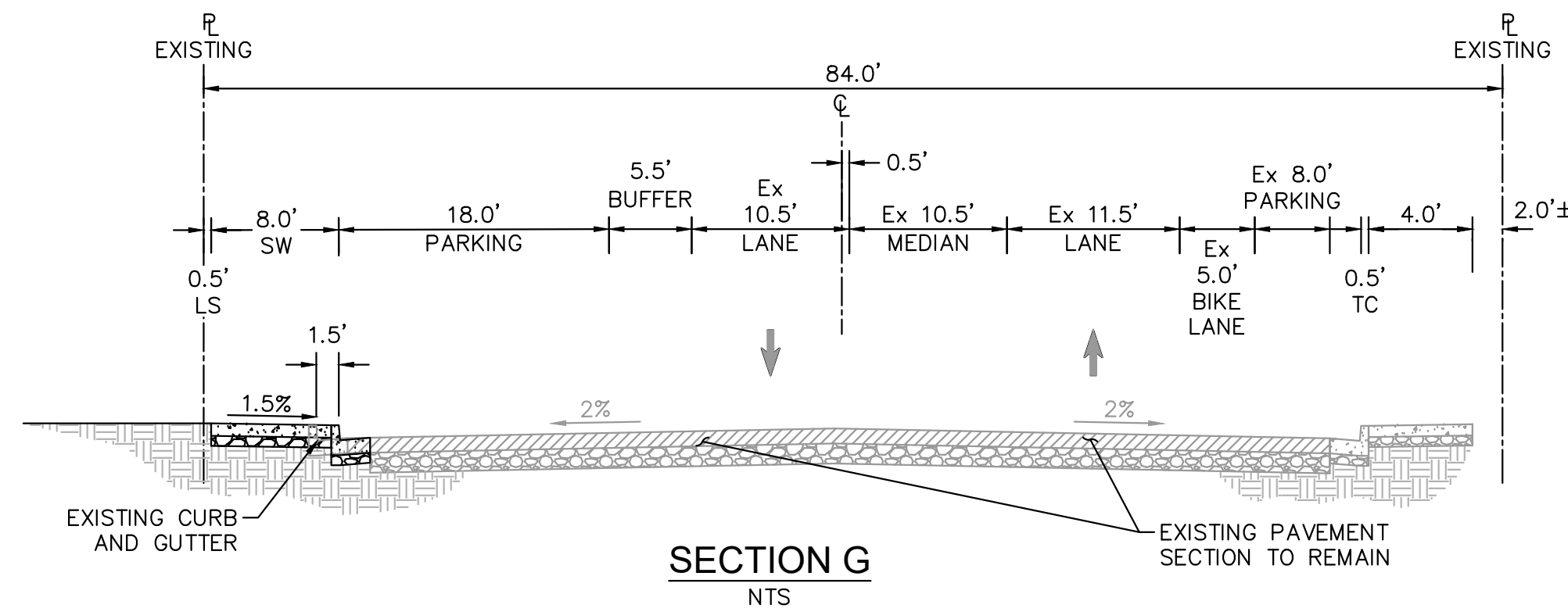
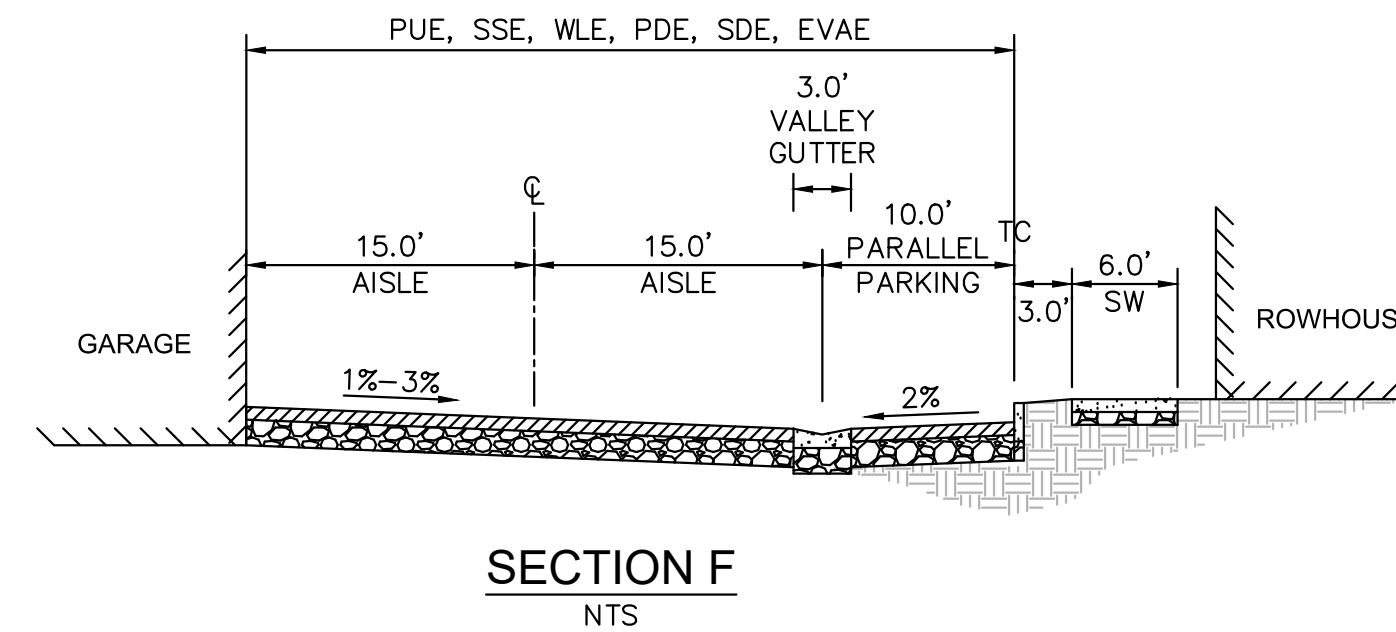
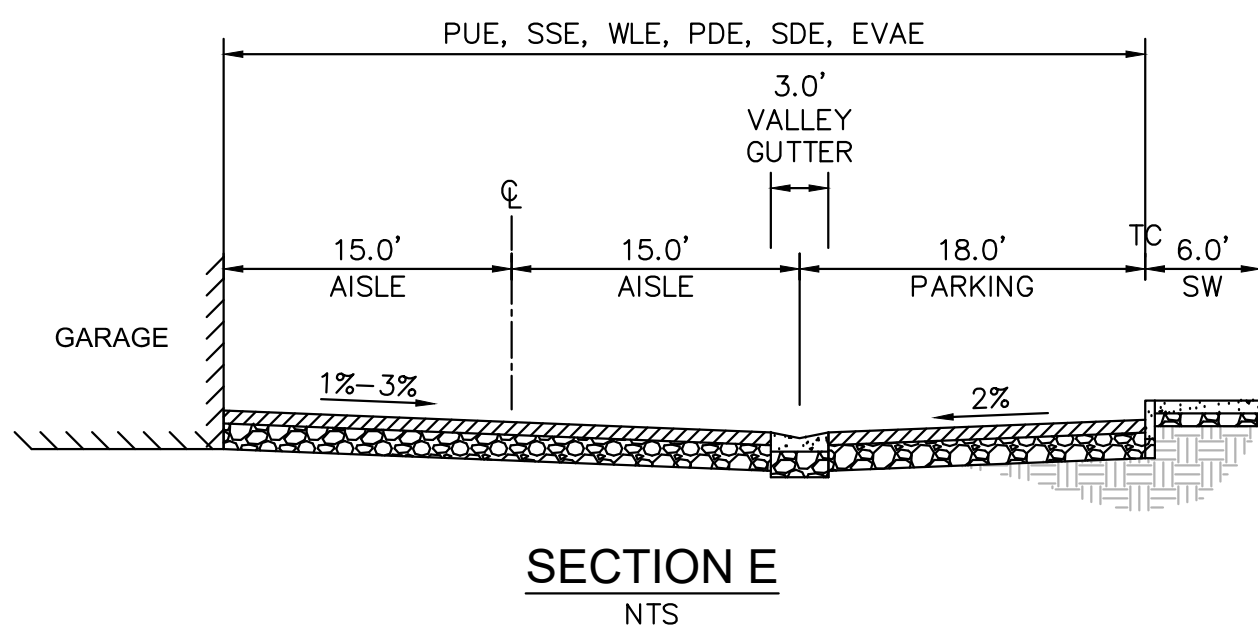
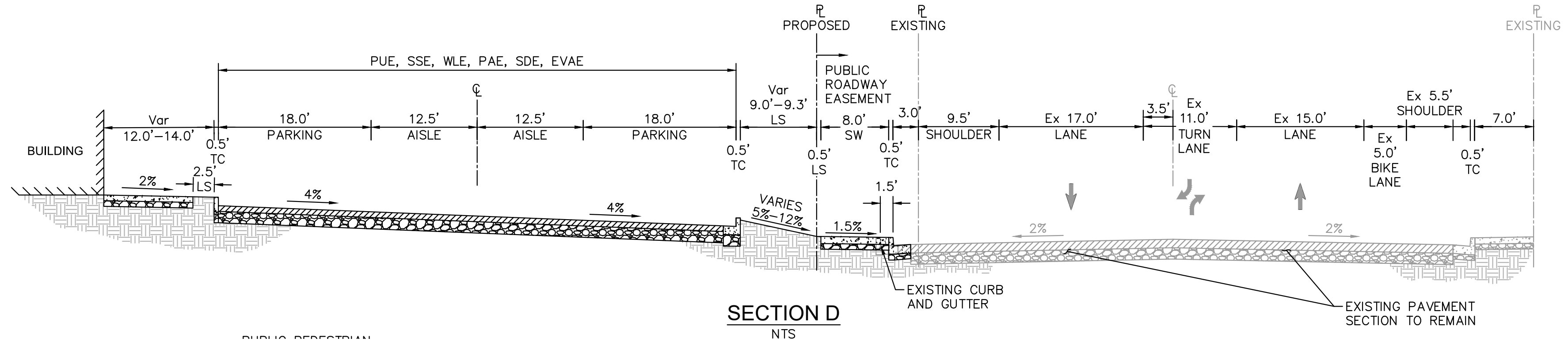
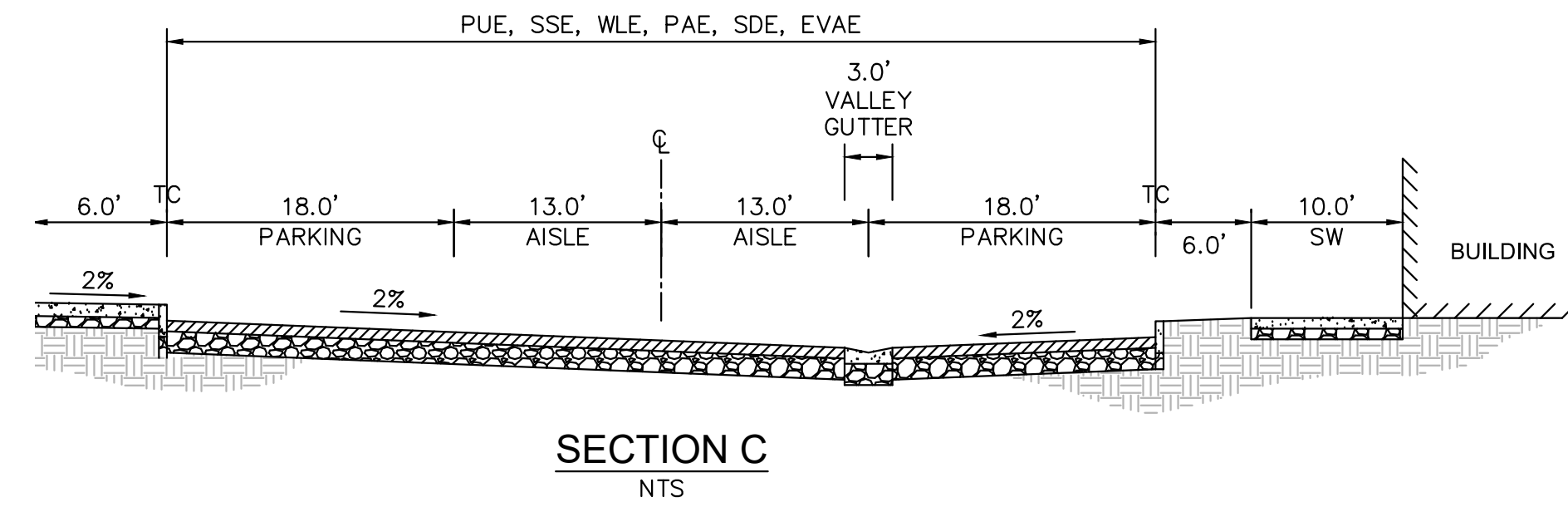
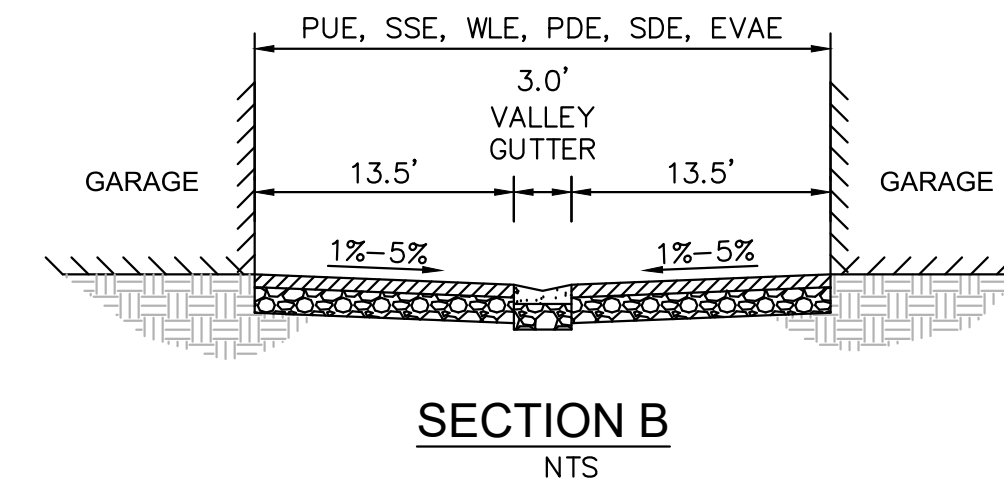
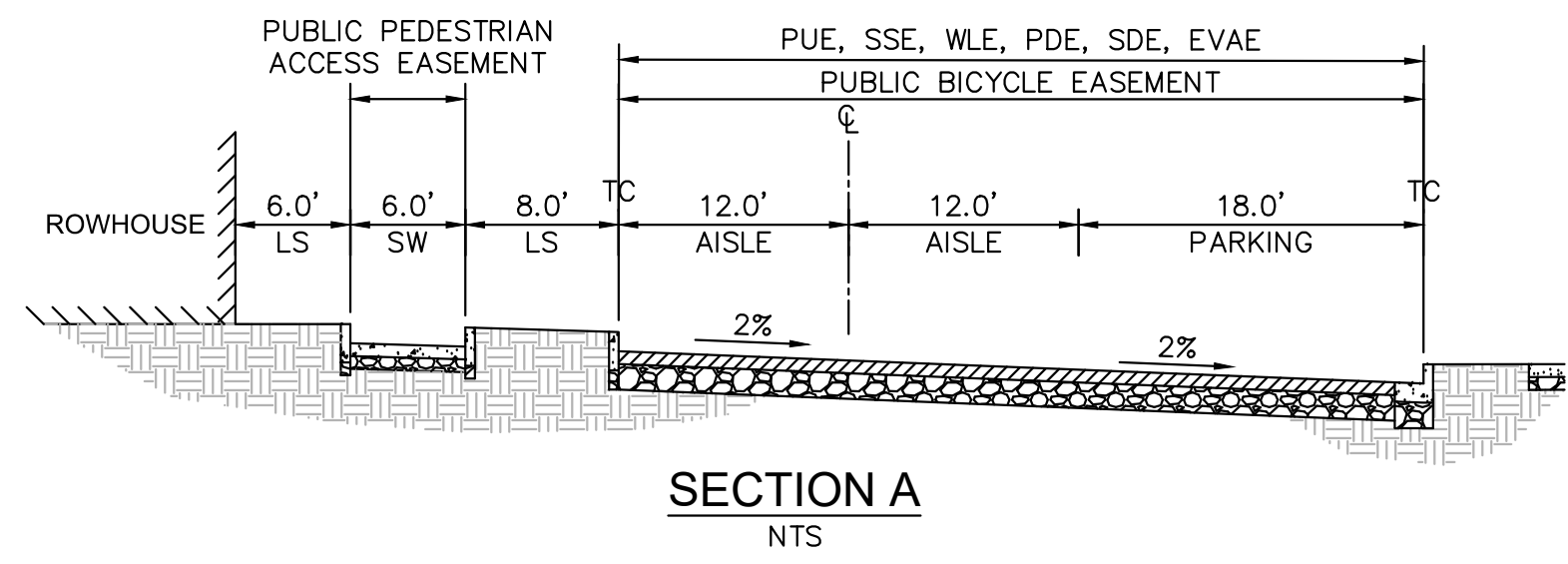
UTILITY PLAN

WESTPORT
 PREPARED FOR
 KT URBAN

CUPERTINO CA

SHEET NUMBER
VTM-4

Plotted By: Sina, Medha - Sheet Set:kha - Layout:VTM-5 SECTIONS - May 05, 2020 01:08:58am - K:\SIC PLAN\097817001 - the saks-kt properties-city of cupertino-lr\CAD\plansheets\ventative map\05 Details & Sections_VTM - 097817001.dwg
 This document, together with the concepts and designs presented herein, is intended only for the specific purpose and client for which it was prepared. Reuse or improper reliance on this document without written authorization and adaptation by Kimley-Horn and Associates, Inc. shall be without liability to Kimley-Horn and Associates, Inc.



NO.	REVISIONS	DATE	BY

Kimley-Horn
 © 2017 KIMLEY-HORN AND ASSOCIATES, INC.
 765 THE CITY DRIVE, SUITE 200, ORANGE, CA 92668
 PHONE: 714-939-1030 FAX: 714-939-9488
 WWW.KIMLEY-HORN.COM

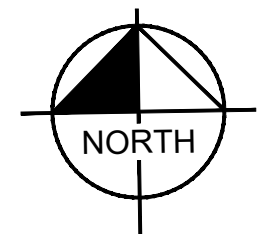
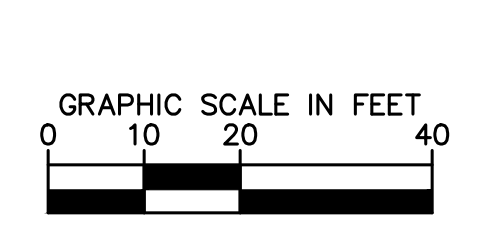
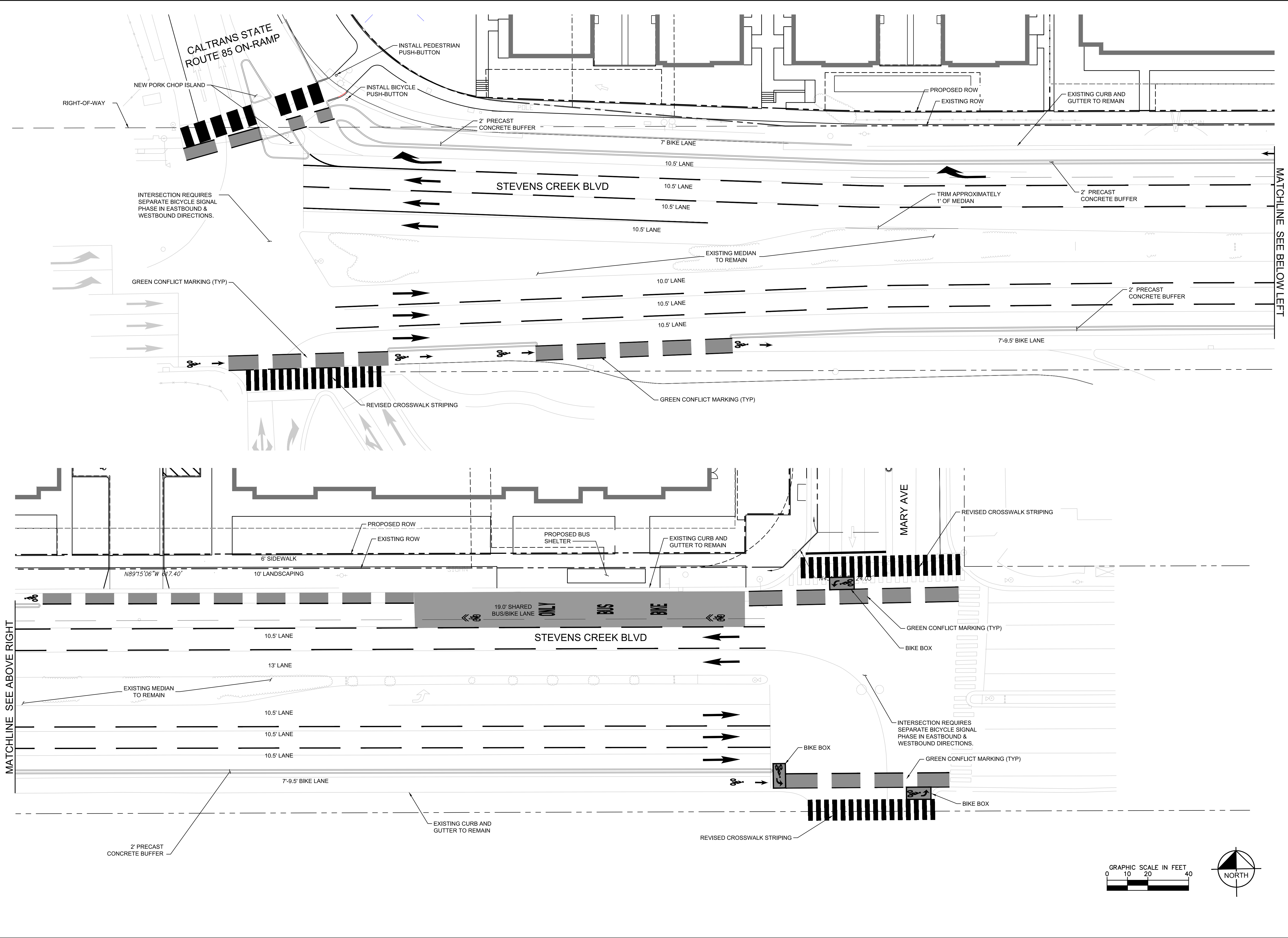
KHA PROJECT	097817001
DATE	05/05/2020
SCALE	AS SHOWN
DESIGNED BY	BH/KN
DRAWN BY	NM
CHECKED BY	MF

SECTIONS

WESTPORT
 PREPARED FOR
 KT URBAN
 CUPERTINO CA

SHEET NUMBER
VTM-5

Plotted By: Saha, Medha - Sheet Set: KHA - Layout: VTM-6 CLASS IV BIKEWAY DESIGN - May 05, 2020 01:08:07pm. K:\SAC_PLAN\097817001 - the odds-kt properties-city of cupertino-w\CAD\plansheets\ventative_map\06 Bikeway Design_VTM_097817001.dwg. This document, together with the concepts and designs presented herein, is intended only for the specific purpose and client for which it was prepared. Reuse or improper reliance on this document without written authorization and adaptation by Kimley-Horn and Associates, Inc. shall be without liability to Kimley-Horn and Associates, Inc.



NO.	REVISIONS	DATE	BY

Kimley-Horn
 © 2017 KIMLEY-HORN AND ASSOCIATES, INC.
 765 THE CITY DRIVE, SUITE 200, ORANGE, CA 92668
 PHONE: 714-939-1030 FAX: 714-938-9488
 WWW.KIMLEY-HORN.COM

KHA PROJECT	097817001
DATE	05/05/2020
SCALE	AS SHOWN
DESIGNED BY	BH/KN
DRAWN BY	NM
CHECKED BY	MF

CLASS IV BIKEWAY DESIGN

WESTPORT
 PREPARED FOR
 KT URBAN
 CUPERTINO CA

SHEET NUMBER
VTM-6