



Living with Wildfire in Santa Clara County

Community Webinar
September 2020



Presented by:



Santa Clara County Fire Department

Justin Stockman, Fire Captain

Luisa Rapport, Information Specialist



Most Destructive Wildfires

Top 20 Most Destructive California Wildfires

	FIRE NAME (CAUSE)	DATE	COUNTY	ACRES	STRUCTURES	DEATHS
1	CAMP FIRE (Powerlines)	November 2018	Butte County	153,336	18,804	85
2	TUBBS (Electrical)	October 2017	Napa & Sonoma	36,807	5,636	22
3	TUNNEL - Oakland Hills (Rekindle)	October 1991	Alameda	1,600	2,900	25
4	CEDAR (Human Related)	October 2003	San Diego	273,246	2,820	15
5	VALLEY (Electrical)	September 2015	Lake, Napa & Sonoma	76,067	1,955	4
6	WITCH (Powerlines)	October 2007	San Diego	197,990	1,650	2
7	WOOLSEY (Under Investigation)	November 2018	Ventura	96,949	1,643	3
8	CARR (Human Related)	July 2018	Shasta County, Trinity County	229,651	1,614	8
9	LNU LIGHTNING COMPLEX (Under Investigation)*	August 2020	Lake, Napa, Sonoma, Yolo & Solano	363,220	1,491	5
10	CZU AUGUST COMPLEX (Lightning)	August 2020	Santa Cruz, San Mateo	86,509	1,490	1
11	NUNS (Powerline)	October 2017	Sonoma	54,382	1,355	3
12	THOMAS (Powerline)	December 2017	Ventura & Santa Barbara	281,893	1,063	2
13	OLD (Human Related)	October 2003	San Bernardino	91,281	1,003	6
14	JONES (Undetermined)	October 1999	Shasta	26,200	954	1
15	BUTTE (Powerlines)	September 2015	Amador & Calaveras	70,868	921	2
16	ATLAS (Powerline)	October 2017	Napa & Solano	51,624	783	6
17	PAINT (Arson)	June 1990	Santa Barbara	4,900	641	1
18	FOUNTAIN (Arson)	August 1992	Shasta	63,960	636	0
19	SAYRE (Misc.)	November 2008	Los Angeles	11,262	604	0
20	CITY OF BERKELEY (Powerlines)	September 1923	Alameda	130	584	0

"Structures" include homes, outbuildings (barns, garages, sheds, etc) and commercial properties destroyed. This list does not include fire jurisdiction. These are the Top 20 regardless of whether they were state, federal, or local responsibility.

*Numbers not final



9/9/2020

Source: California Department of Forestry & Fire Protection



California's Fourth Climate Change Assessment



- California's Changing Climate 2018 indicates hotter & drier weather
- ***“The science is highly certain that California will continue to warm and experience greater impacts from climate change in the future.”***
- This report forecasts areas burned by wildfires could increase 77% as a result of the changing climate.



Wildland Areas in Santa Clara County

Santa Clara County Community Wildfire Protection Plan

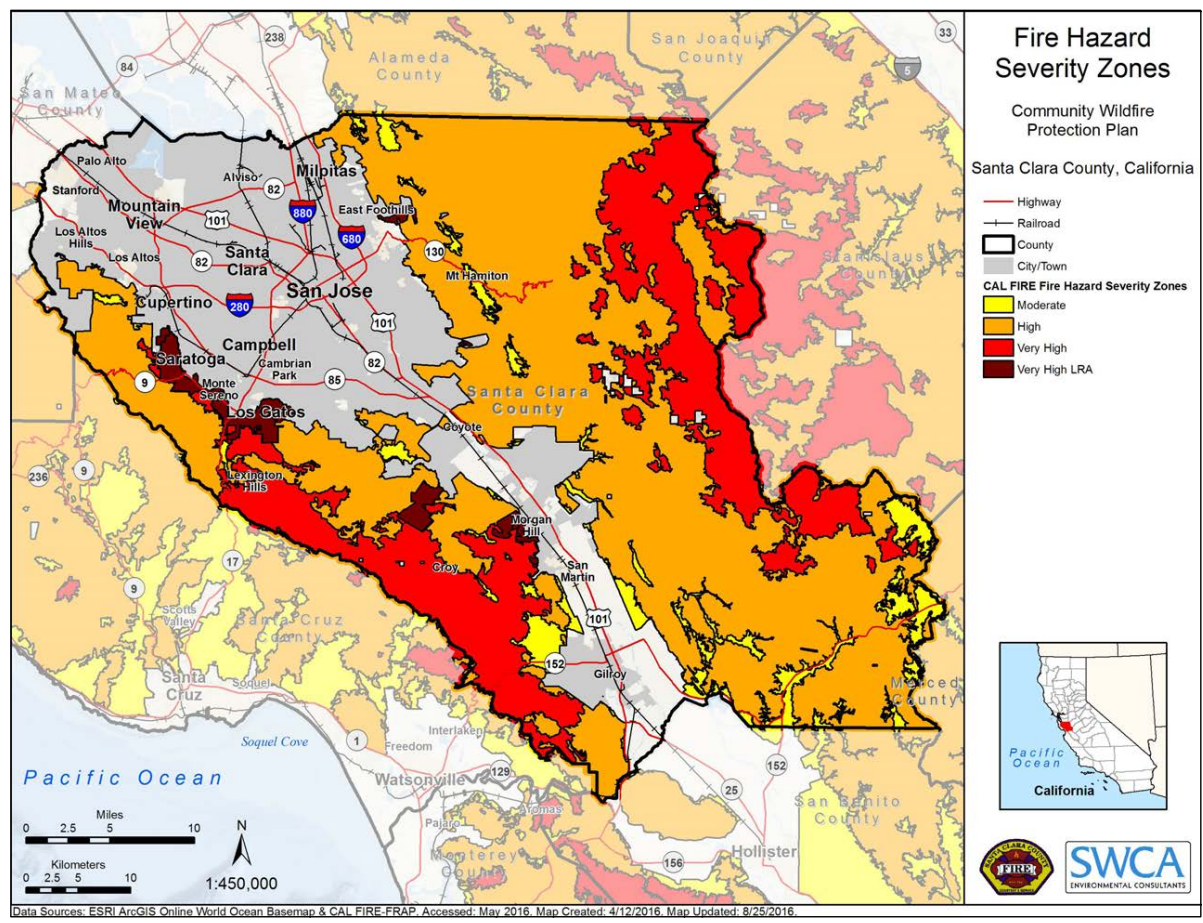
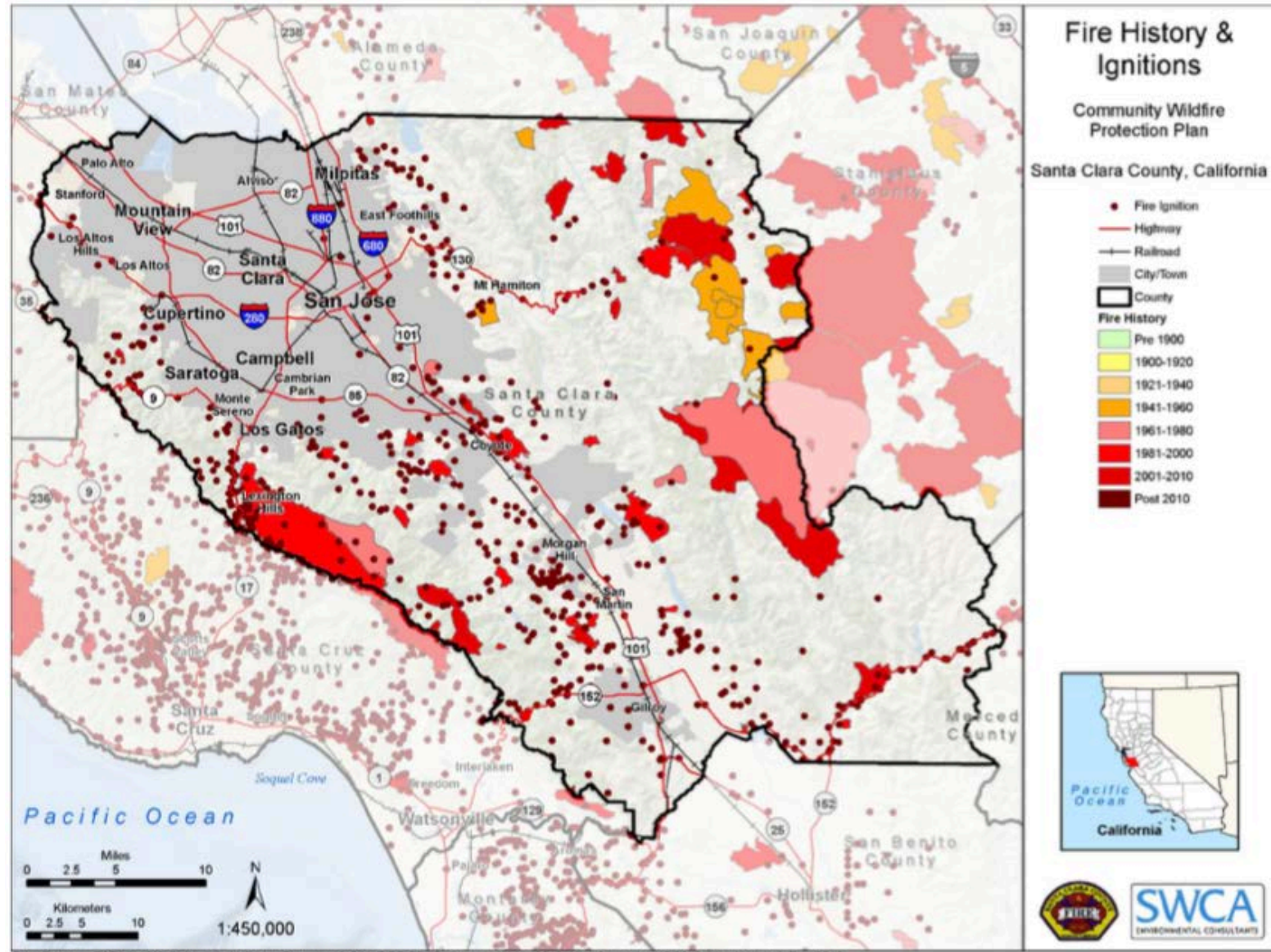


Figure 1.1. Fire hazard severity zones.

- 550,000 acres
- 200,000 acres are 'dual jurisdiction'
- Fire Hazard Severity Zones
 - Moderate
 - High
 - Very High
 - Very High LRA

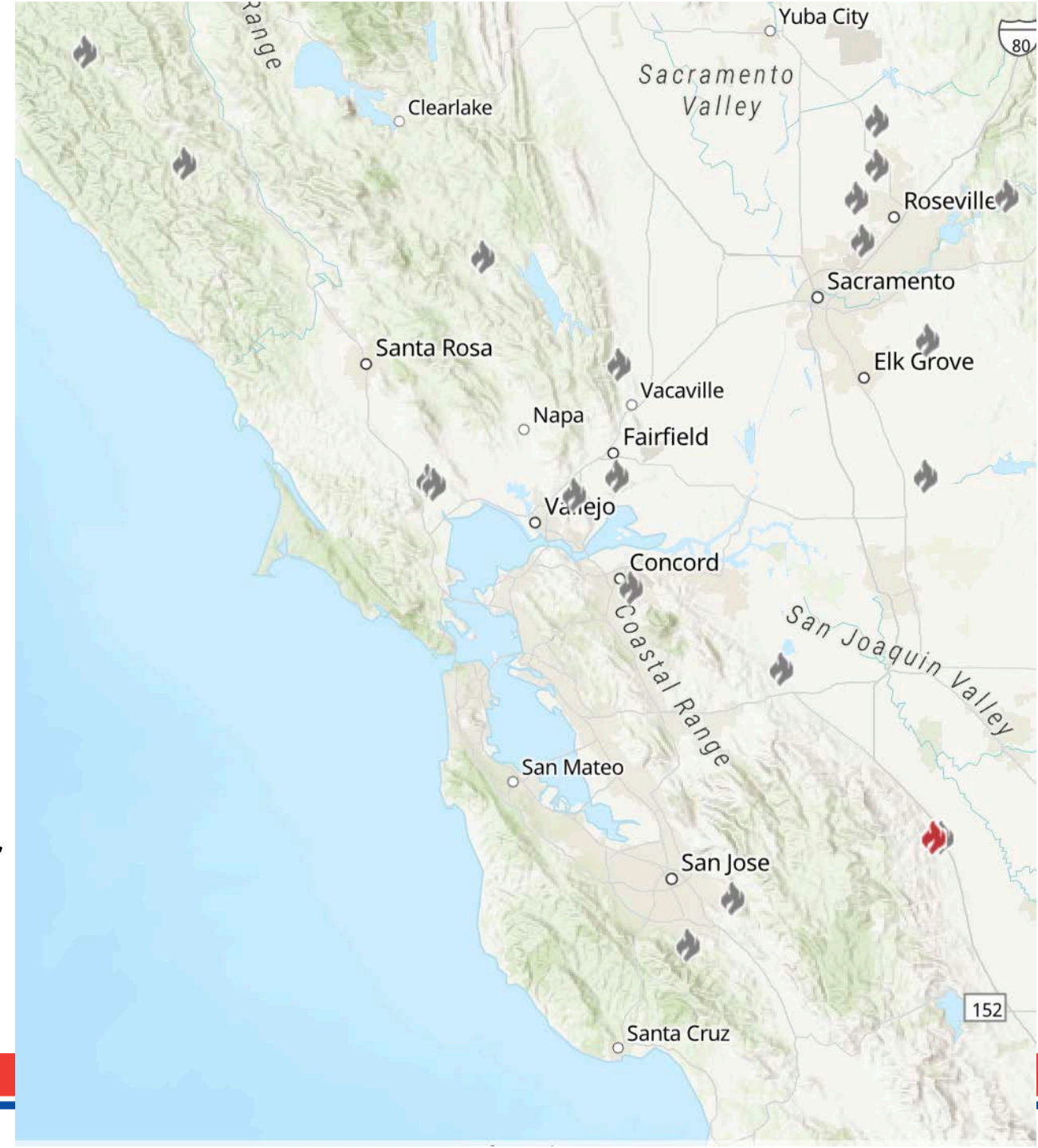
No single agency can address this challenge alone!

Local Fire History...



August 2020

- SCU Complex
 - 396,000 acres
 - Second largest fire in California history
 - Multiple counties involved
- CZU Complex
 - 86,000 acres
 - Unprecedented fire behavior for area
 - Limited resource availability



FUEL
(Dense & Dry Vegetation)



WEATHER
(Hotter & Drier)



**DEVASTATING
WILDFIRES**



**WILDLAND URBAN
INTERFACE
COMMUNITIES**



What are we doing?

&

What can you do?



Addressing the Wildfire Problem

FUEL
(Fuel Reduction)



WEATHER
(Quicker detection & response)



**WILDLAND URBAN
INTERFACE COMMUNITIES**
(Planning & Educating)



**DEVASTATING
WILDFIRES**





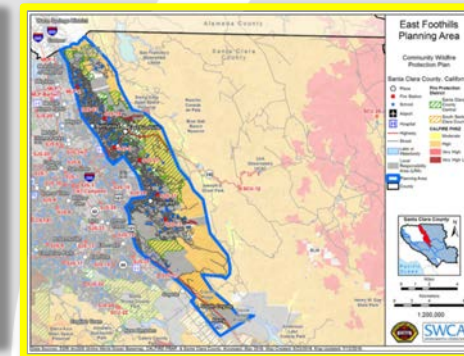
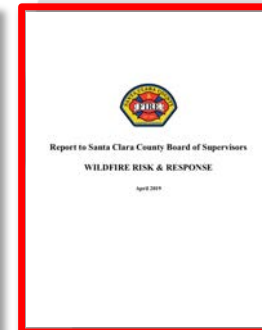
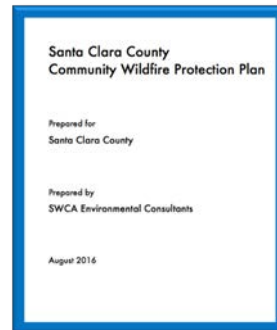
Fuel Reduction



Quicker Detection & Response



Coordinated Prevention & Planning





Mobile Operating Satellite Emergency System (MOSES)





Local Response Resources

- Mutual Aid - Santa Clara County Operational Area
- In-County Wildland Task Force
- South Bay Incident Management Team





BE READY
For a wildfire with...

READY

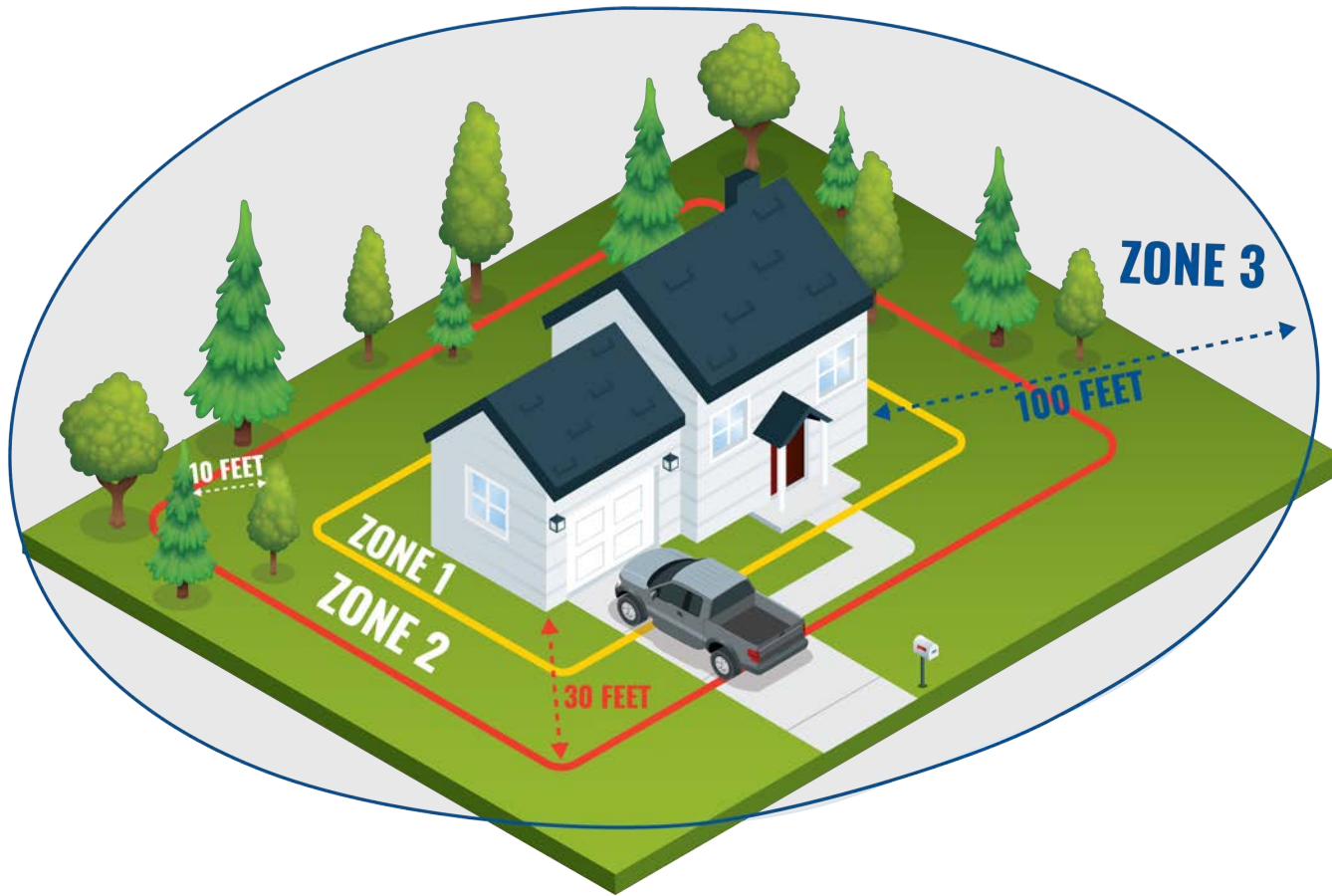
SET

GO!

sccfd.org/rsg



Get **READY**



- **Create defensible space**
 - **Zone 1** (0-5 ft non-combustibles)
 - **Zone 2** (5-30 ft clean & green)
 - **Zone 3** (30-100 ft reduced fuel)
- **Harden your home**
 - Roof
 - Windows
 - Deck
- **Register for AlertSCC**
 - www.alertscc.com
- **Download ReadySCC mobile app**



Get SET

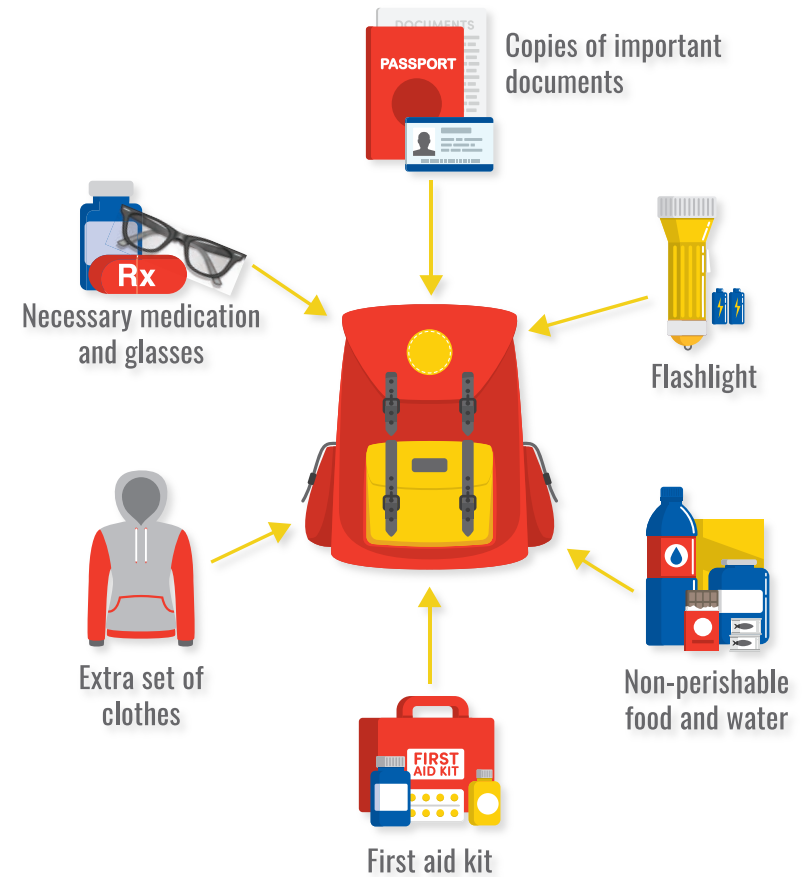
- Prepare your household for the possibility of having to evacuate

- **Create a Wildfire Action Plan**

- Designate a meeting location
- Identify evacuation routes (x2)
- Develop a communications plan
- Loss of power – battery backups
- Plan for large animals & pets

- **Assemble an emergency supply kit**

- Pack essential items to grab & go when needed



GO!

- **Prepare home for evacuation**
 - Inside & outside the home
 - Large animals & pets
- **DRESS for survival**
- **Call 911 ONLY for emergencies**
- **Leave early**



GO!

- **Evacuation ORDERS:** There is an immediate threat to life.
 - Leave now
 - Attempt to evacuate with pets & animals
 - Individuals have the right to refuse evacuation orders

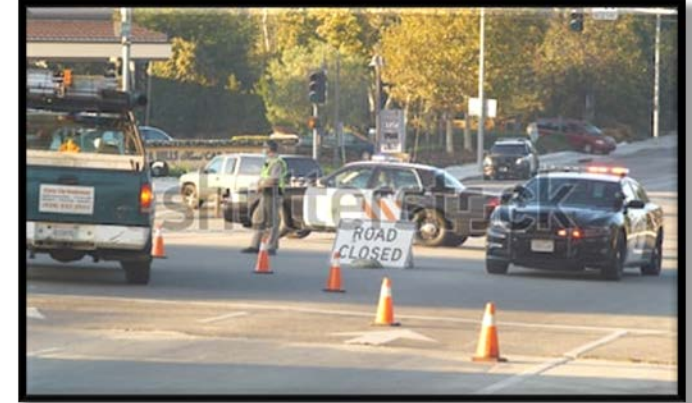
- **Evacuation WARNINGS:** Potential threat to life and/or property
 - Stay informed & leave early to avoid being caught in fire, smoke or road congestion
 - Leave sooner if you have special needs, pets/livestock, or feel unsafe

- **Shelter in Place**
 - **Stay secured in current location.**
 - May be used if evacuation not needed or would create a greater threat.



Evacuation Coordination

- **Decisions to evacuate or shelter are made in unified command – law & fire**
- **Evacuations are conducted by law enforcement**
- **Evacuation information will be shared via AlertSCC, social media, etc.**
- **Routes will be determined based on the location of the fire**
- **Door-to-door & vehicle loudspeaker – don't expect law enforcement to get to every house**



Stay Informed

Emergency Alerts

- ALERTSCC – when action is needed
- Register phone, mobile devices, email address, physical address

Social Media

- Facebook, Twitter, Nextdoor
- General information and incident updates

Other

- Horns, sirens, loudspeakers, etc.



SCCFD

- Facebook or Twitter - @SCCFireDept

SCCSO

- Facebook or Twitter - @SCCoSheriff

Cal Fire

- Facebook - @CalFire
- Twitter - @CAL_FIRE

SJFD

- Facebook- @SanJoseFD
- Twitter - @SJFD



Red Flag Warnings

- A red flag warning is a notice issued by the National Weather Service (NWS) current weather conditions are at extreme risk for wildfires and rapid spread.



- These conditions may include:



LOW RELATIVE HUMIDITY



STRONG WINDS



DRY FUELS



POSSIBILITY OF DRY LIGHTNING STRIKES



During Red Flag Warnings

Maintain Situational Awareness

- Monitor information sources
- Review your **Evacuation Plan Checklist**
- Place Emergency Supply Kit in your vehicle
- Prepare:
 1. Yourself (dress appropriately!)
 2. Your family
 3. Your pets
 4. Your home
- Leave immediately when ordered or if you feel unsafe!



Public Safety Power Shutoff

➤ Public Safety Power Shutoff (PSPS)

- If extreme fire danger conditions threaten your community, electricity may be turned off in the interest of public safety
- PSPS may last longer than 48 hours

➤ Medical Baseline Program

- Assistance program for residential customers who have special energy needs due to qualifying medical conditions
- Customers receive extra notifications in advance of a PSPS



®

Update your contact information with PG&E to receive PSPS notifications:

pge.com/mywildfirealerts • 866.743.6589



Resources & Information



Santa Clara County Fire Department

- www.sccfd.org/rsg
- 408.378.4010



Santa Clara County Sheriff

- www.sccgov.org/sites/sheriff
- 1.800.211.2220



District 3 Supervisor

- www.sccgov.org/sites/d3
- 408.299.5030



CA State Assembly District 28

- <https://a28.asmdc.org/>
- 408.446.2810

QUESTIONS

