

# NEW AND REDEVELOPMENT PROJECTS

## LITTER REDUCTION FACT SHEET

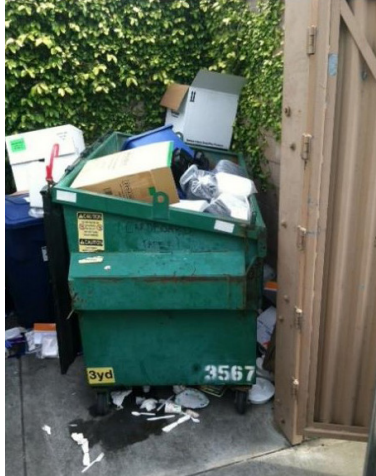
■ Architects ■ Engineers ■ Developers

*Help protect our local creeks, shorelines, and the San Francisco Bay.*

### WHY CONSIDER LITTER IN YOUR BUILDING DESIGN AND MAINTENANCE?

Neighborhoods and streets are connected to creeks, shorelines, and the San Francisco Bay via surface flow and storm drain systems. Improperly managed waste from buildings can litter the street and flow to our waterways without any cleaning or filtering. Reduce litter by addressing important building design and maintenance issues before the building is constructed. Municipalities in Santa Clara County are required to significantly reduce the amount of litter entering the Bay.

Incorporating the design concepts in this fact sheet will help meet local and State litter reduction goals. These concepts include considering litter management practices, different types of discarded materials (e.g., compost, recycling and special materials) and building operations during the design of new and redeveloped buildings.



**To protect our waterways,  
State and local water quality regulations  
require a significant reduction in litter.**

### HOW CAN YOUR BUILDING DESIGN AND OPERATIONS INCORPORATE LITTER MANAGEMENT PRACTICES?

A variety of public guidance resources exist to assist architects, engineers, contractors, and developers incorporate litter management practices into their designs. Municipal requirements may vary.

#### Follow these Steps to Reduce Litter and Waste in Your Building Design and Operation

1. Comply with litter-related **Conditions of Approval** issued by your municipality. Confirm requirements early on.
2. **Work with Hauler and Municipal Staff** to create a Discard Collection Plan (See back for details).
3. Determine the **Right Size, Right Service** with municipality and hauler at occupancy stage.

#### ● **Conditions of Approval**

Both the design phase and occupancy phase of development projects should meet the permitting agency's Conditions of Approval. For instance: trash, recycling and compost facilities should be large enough for building activities; and discard storage and collection areas should be accessible and convenient for building users, as well as collection vehicles. Address these issues in the Discard Collection Plan in step 2.

#### ● **Work with Hauler and Municipal Staff** **Find Your Recycling and Garbage Service Providers** *Santa Clara County and San Jose State University* [www.RecycleStuff.org](http://www.RecycleStuff.org)

To reduce litter incorporate a Discard Collection Plan into your design: coordinate early and often with hauler and municipal staff. Staff can inform you of access needs, zoning and other requirements.

#### ● **"Right Size, Right Service"**

Building owners and designers must work together with municipal staff and haulers to determine the right size, type, and number of containers, and the right service frequency, to meet litter and waste reduction goals.

# DISCARD COLLECTION PLANS FOR NEW AND REDEVELOPMENT PROJECTS

## WHAT IS A DISCARD COLLECTION PLAN?

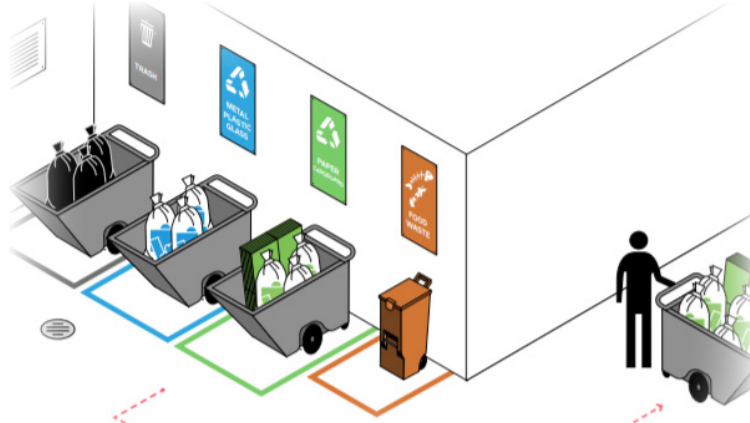
The plan describes the building site and key elements of how discarded materials will be collected, stored, set out for collection and accessed by hauler vehicles and staff. A well-thought out plan can help reduce litter and waste. See the link below to the SMCWPPP Litter Reduction Toolkit for more details.

### Key Elements

- Property map and hauler access
- Indoor collection system
- Special material collection areas
- Discard area enclosure design

### Discard Management and Storage

- Chutes can be used to collect materials internally.
- Organized storage of materials reduces litter and waste.
- On service day(s), materials are brought out.



(Graphic courtesy of AIANY)



### Container Staging and Hauler Service

- Areas where containers will be staged for collection by the hauler must be set-up to reduce litter (e.g. enclosed, away from storm drains, accessible to hauler vehicles).
- Plan for different vehicle and container types.



## ADDITIONAL RESOURCES AND GUIDANCE DOCUMENTS

- Litter Reduction Toolkit | [SMCWPPP](#) | [flowstobay.org/preventing-stormwater-pollution/in-my-place-of-business/property-managers](http://flowstobay.org/preventing-stormwater-pollution/in-my-place-of-business/property-managers)
- AIANY Zero Waste Design Guidelines | [Center for Architecture](#) | [zerowastedesign.org](http://zerowastedesign.org)
- Recycling and Waste Reduction Commission | [County of Santa Clara](#) | [sccgov.org/sites/rwr/rwrc/Pages/rwrc.aspx](http://sccgov.org/sites/rwr/rwrc/Pages/rwrc.aspx)
- Milpitas Design Guidelines | [City of Milpitas](#) | [ci.milpitas.ca.gov/\\_pdfs/engdesignguidelines/eng\\_dg\\_xxi\\_solidwasterecycling.pdf](http://ci.milpitas.ca.gov/_pdfs/engdesignguidelines/eng_dg_xxi_solidwasterecycling.pdf)
- Palo Alto Design Guidelines | [City of Palo Alto](#) | [cityofpaloalto.org/civicax/filebank/documents/61373](http://cityofpaloalto.org/civicax/filebank/documents/61373)
- San José Design Guidelines | [City of San José](#) | [sanjoseca.gov/home/showdocument?id=15629](http://sanjoseca.gov/home/showdocument?id=15629)
- Sunnyvale Design Guidelines | [City of Sunnyvale](#) | [sunnyvale.ca.gov/civicax/filebank/blobload.aspx?BlobID=23590](http://sunnyvale.ca.gov/civicax/filebank/blobload.aspx?BlobID=23590)
- Space Guidelines for Refuse Services | [Stop Waste](#) | [stopwaste.org/resource/space-guidelines-recycling-organics-and-refuse-services](http://stopwaste.org/resource/space-guidelines-recycling-organics-and-refuse-services)
- Franchise Agreement Best Practices | [ZLI](#) | [scvurppp.org/pdfs/1314/Final\\_BMP-Litter-Trash\\_Recommendations\\_060314.pdf](http://scvurppp.org/pdfs/1314/Final_BMP-Litter-Trash_Recommendations_060314.pdf)