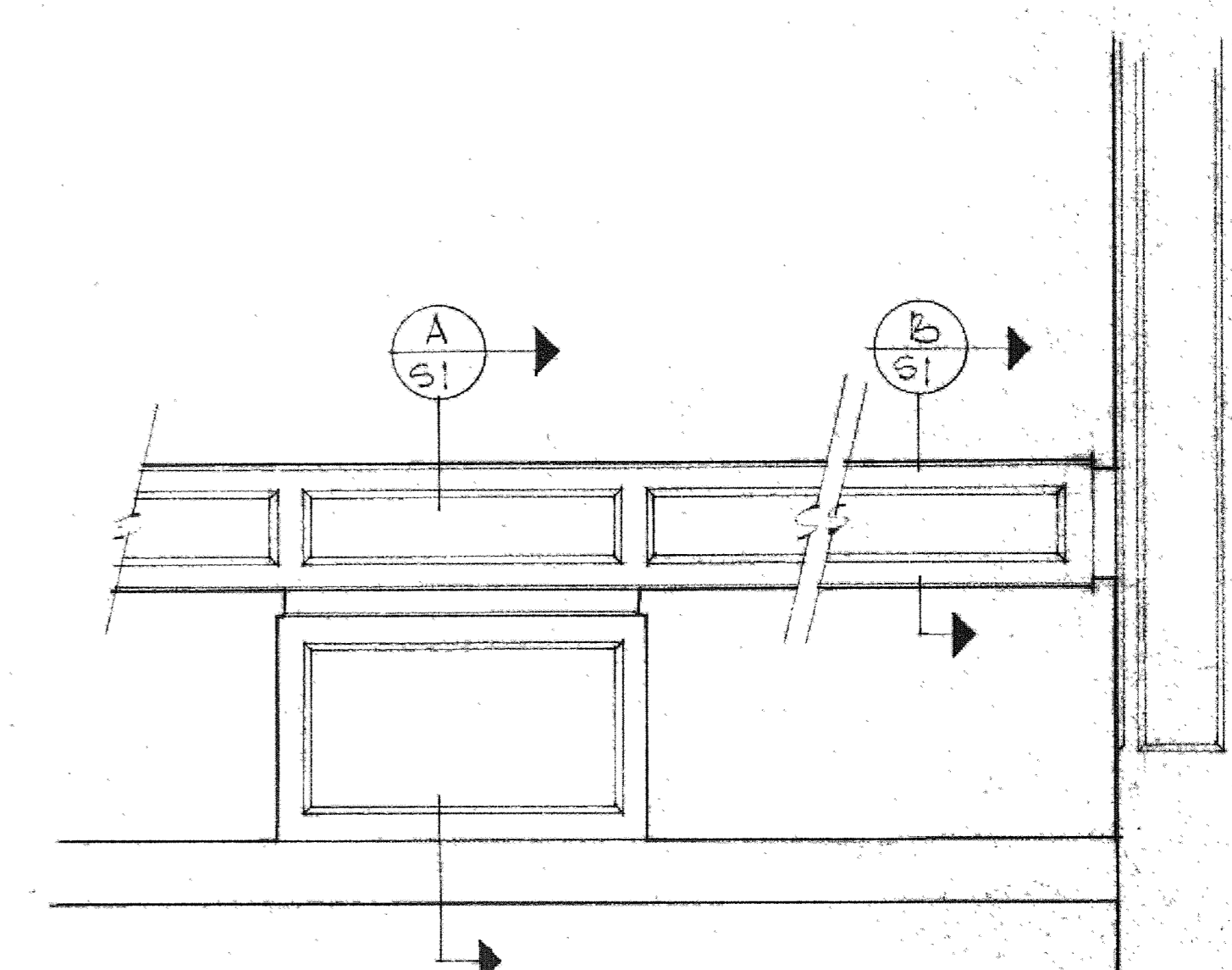
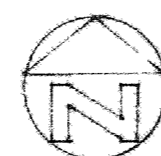
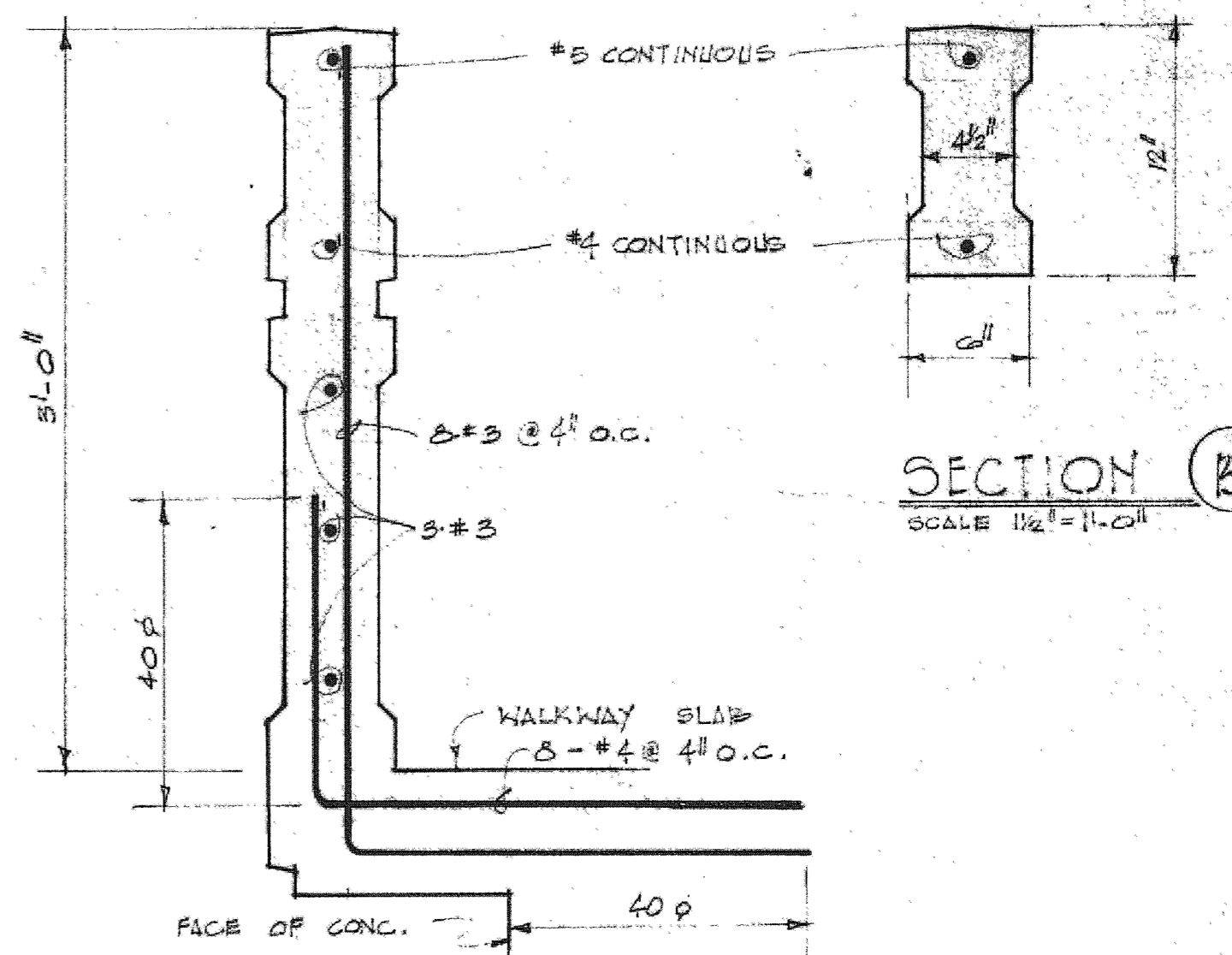


BASEMENT FOUNDATION PLAN
 1/8" = 1'-0"



CONCRETE HANDRAIL
 SCALE: 3/8" = 1'-0"

SEE ARCHITECTURAL FOR DETAILING



SECTION A
 SCALE: 1 1/2" = 1'-0"

SECTION B
 SCALE: 1 1/2" = 1'-0"

SYMBOLS

- (A-5.7) DETAIL DESIGNATION SHEET DETAIL IS ON
- (C1) COLUMN DESIGNATION, COLUMN SCHEDULE SHEET NO. C-6
- (G1) GIRDER DESIGNATION, SCHEDULE SHEET NO. G-4
- (B5) BEAM DESIGNATION, SCHEDULE SHEET NO. B-4
- (S7) SLAB DESIGNATION, SCHEDULE SHEET NO. S-6
- FIG. 10.1 BOTTOM OF FIG. ELEV., RELATIVE TO TOP OF FIRST FLOOR SLAB
- 10.1 LOCATION OF STEP IN FIG.
- 10.1 CONCRETE JOIST DESIGNATION, SCHEDULE SHEET NO. C-4

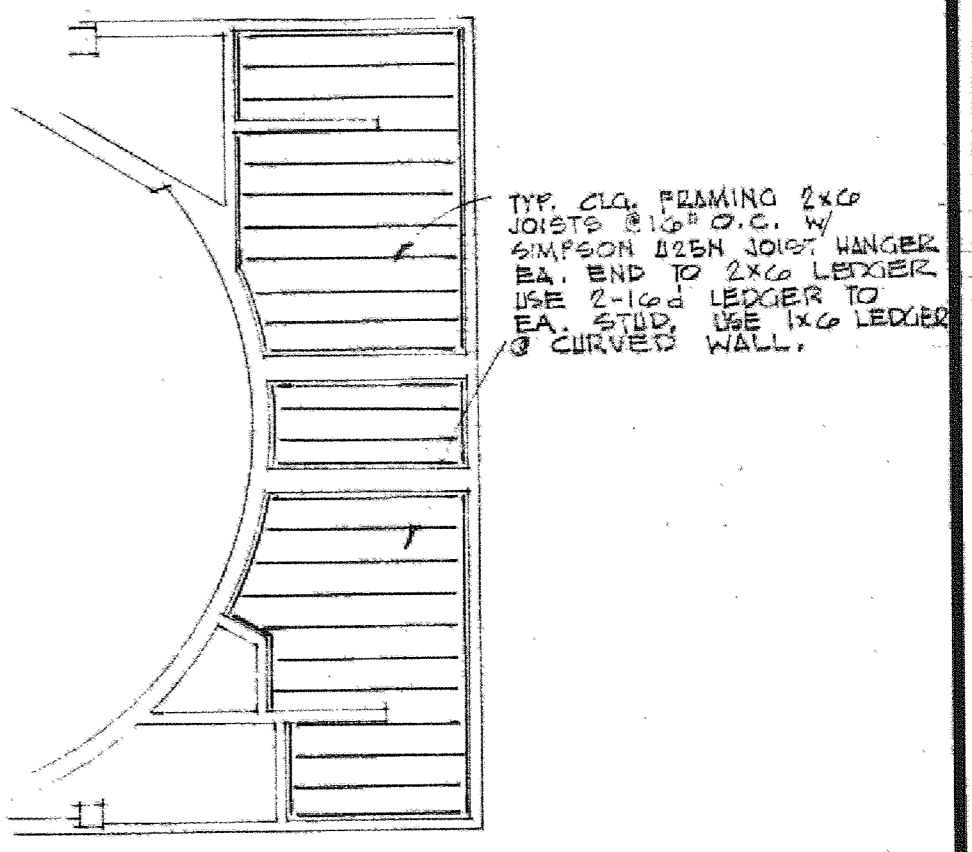
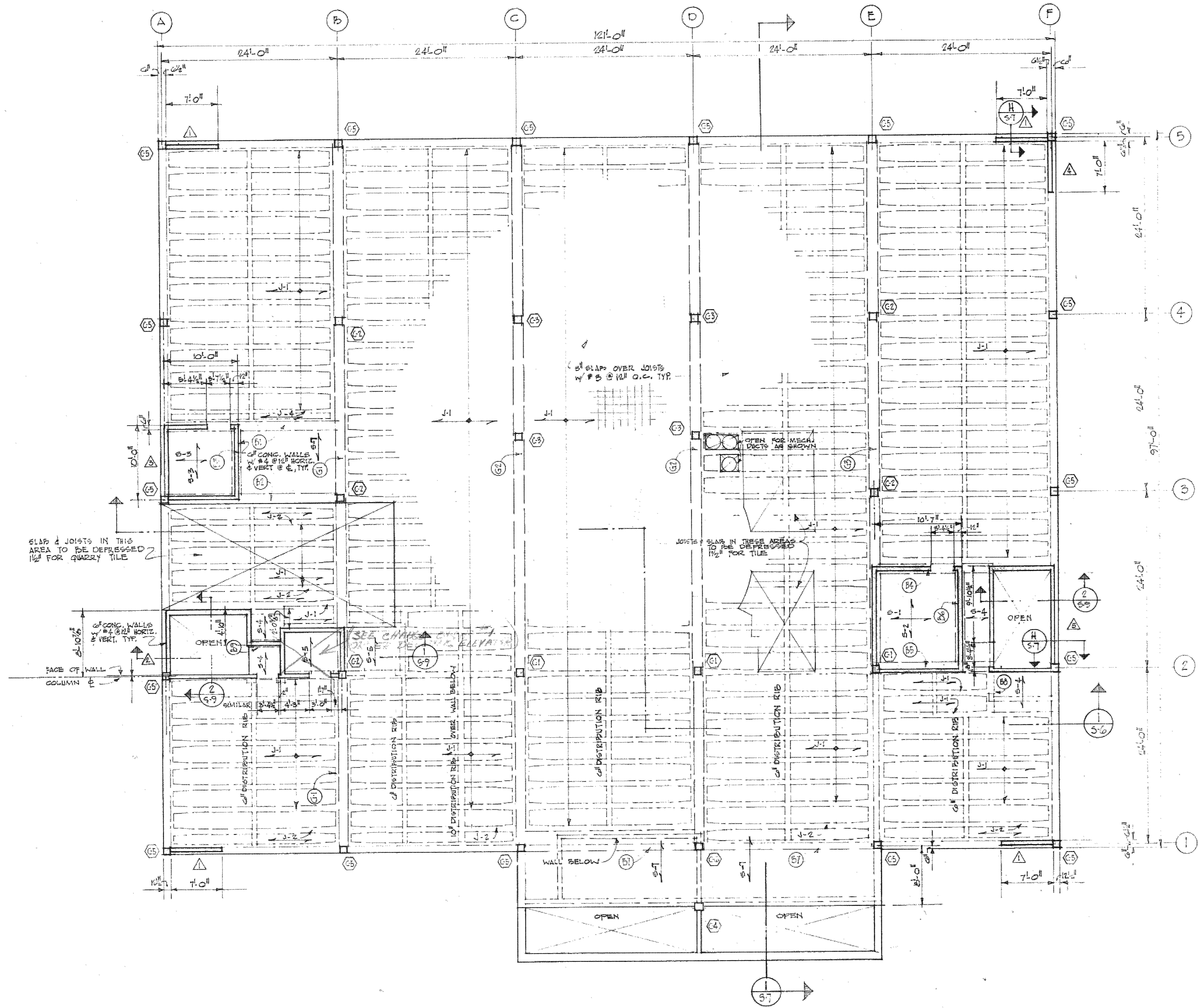
CUPERTINO CITY HALL
 S.E. CORNER OF RODRIGUES & TORRE, CUPERTINO, CALIFORNIA
 BASEMENT FOUNDATION PLAN

WILFRED E. BLESSING A.I.A.
 ARCHITECT & LANDSCAPE ARCHITECT
 1954 THE ALAMEDA
 SAN JOSE, CALIFORNIA 95126

KIRK C. MCFARLAND, JR.
 STRUCTURAL ENGINEER
 SAN JOSE, CALIFORNIA

DRAWN BY: [initials]
 CHECKED: [initials]
 DATE: 11/1/65
 REVISED:

SHEET
51
 OF 50



CLG. FRAMING PLAN for TOILET RM
SCALE 1/8" = 1'-0"

SHEAR WALL SCHEDULE

MARK	WALL THICKNESS	AMB. TO B/S TO WALL	REBAR EA. END OF WALL	REMARKS
△	6"	7	2	TYP. WALL STEEL #4 @ 12" EA. WAY
△	6"	6	1	DO.
△	6"	5	1	DO.
△	6"	4	1	DO.
△	6"	10	2	DO.

NOTE:
REBAR @ EACH END OF WALL SHALL BE FULL HEIGHT W/ NO SPICE @ TOP OF FOUNDATION. PROVIDE #3 DOWELS @ 6" FROM FOUNDATION FOR ENTIRE LENGTH OF WALL.

FIRST FLOOR FRAMING PLAN
1/8" = 1'-0"

DRAWN: W.S.
CHECKED:
DATE: OCT. 1, 1955

WILFRED E. BLESSING A.I.A.
ARCHITECT & LANDSCAPE ARCHITECT

Wob

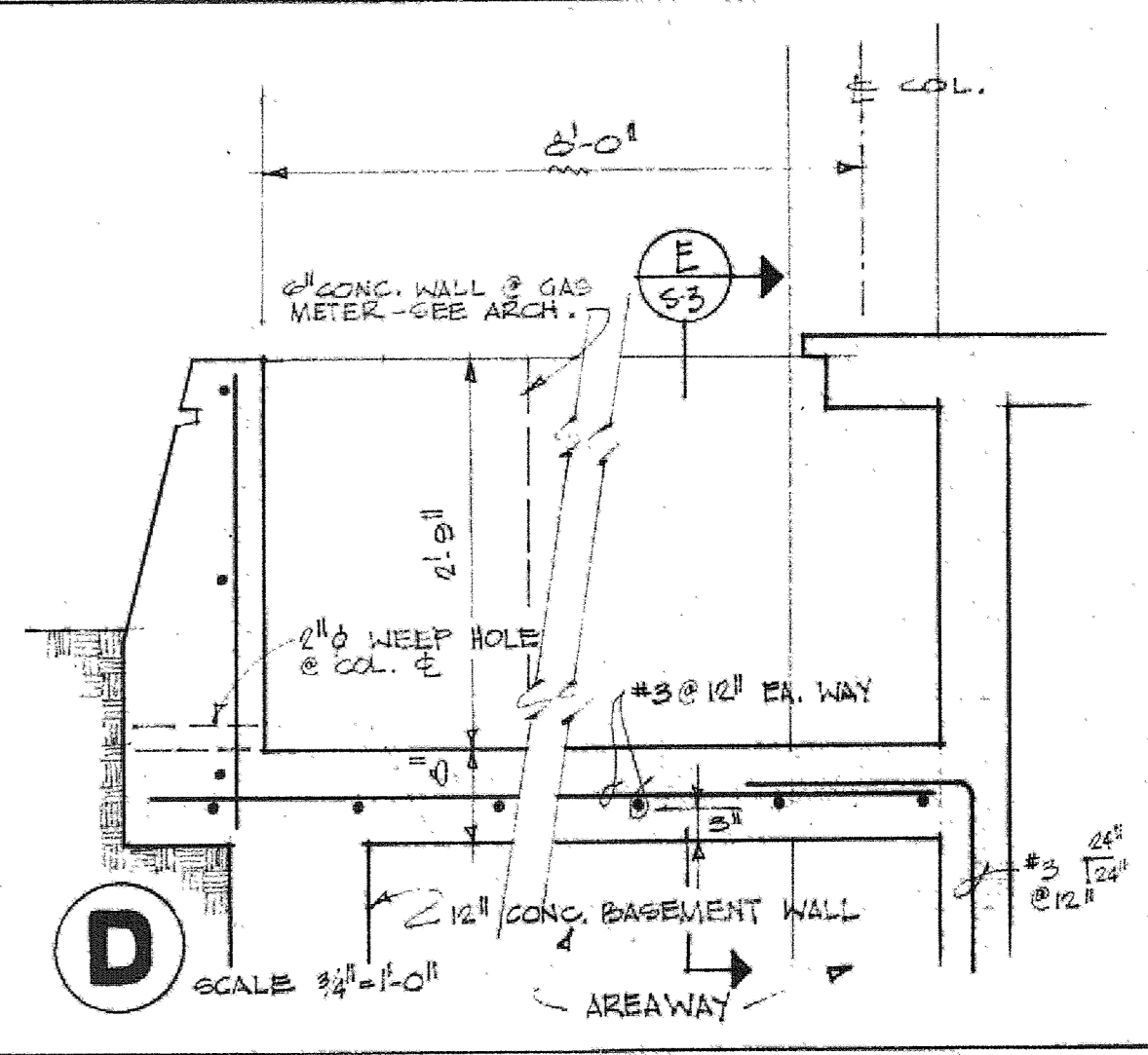
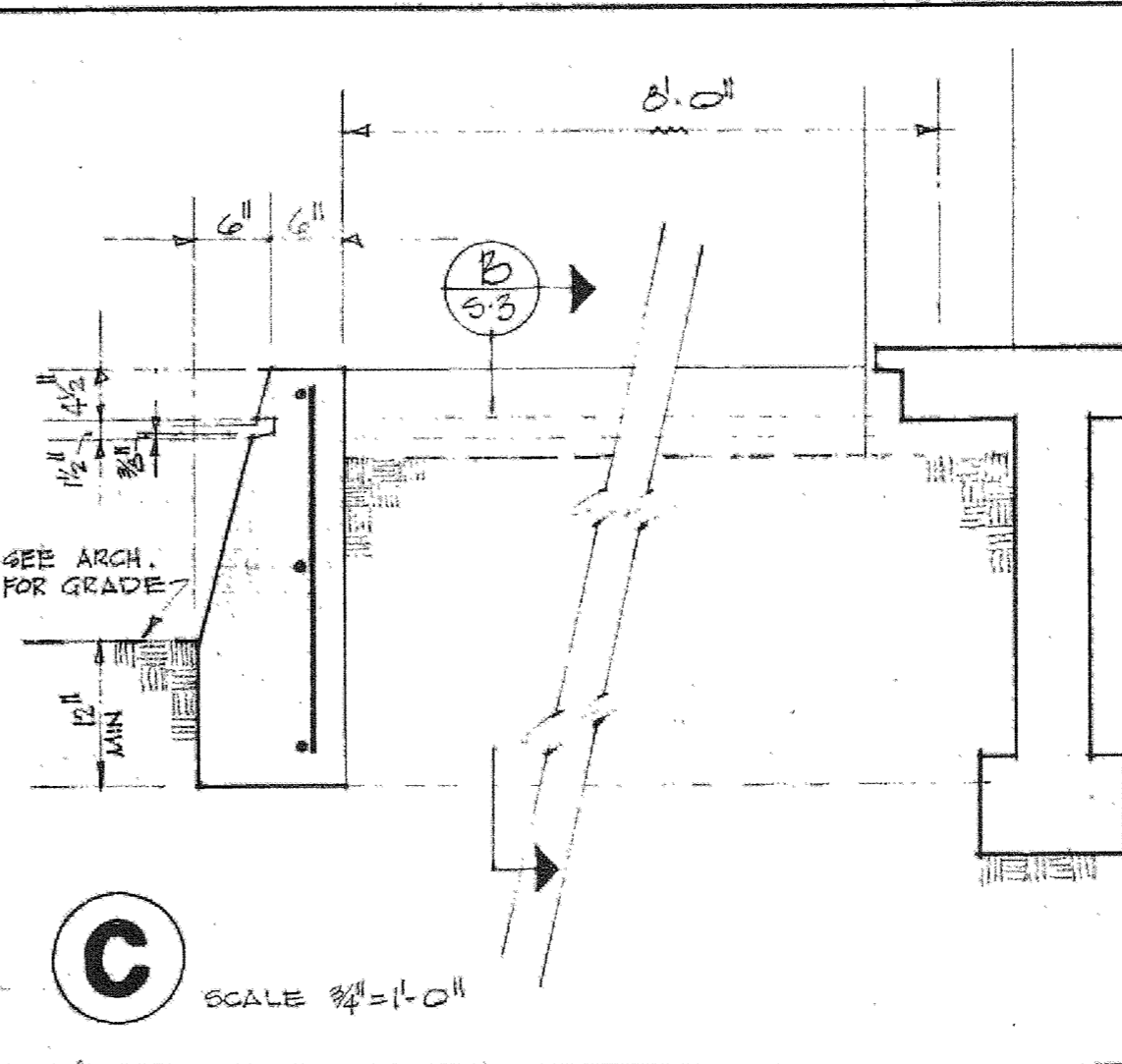
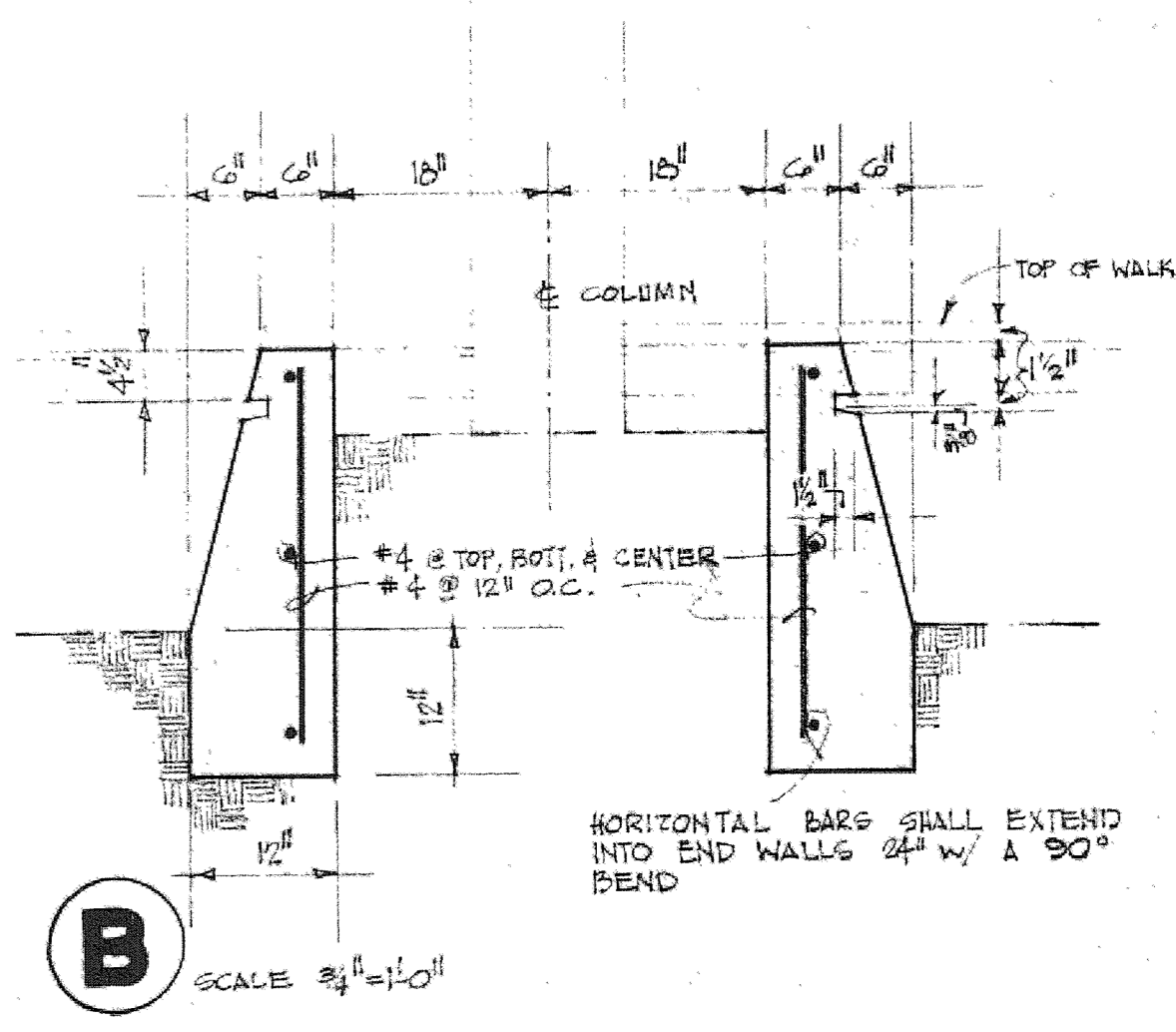
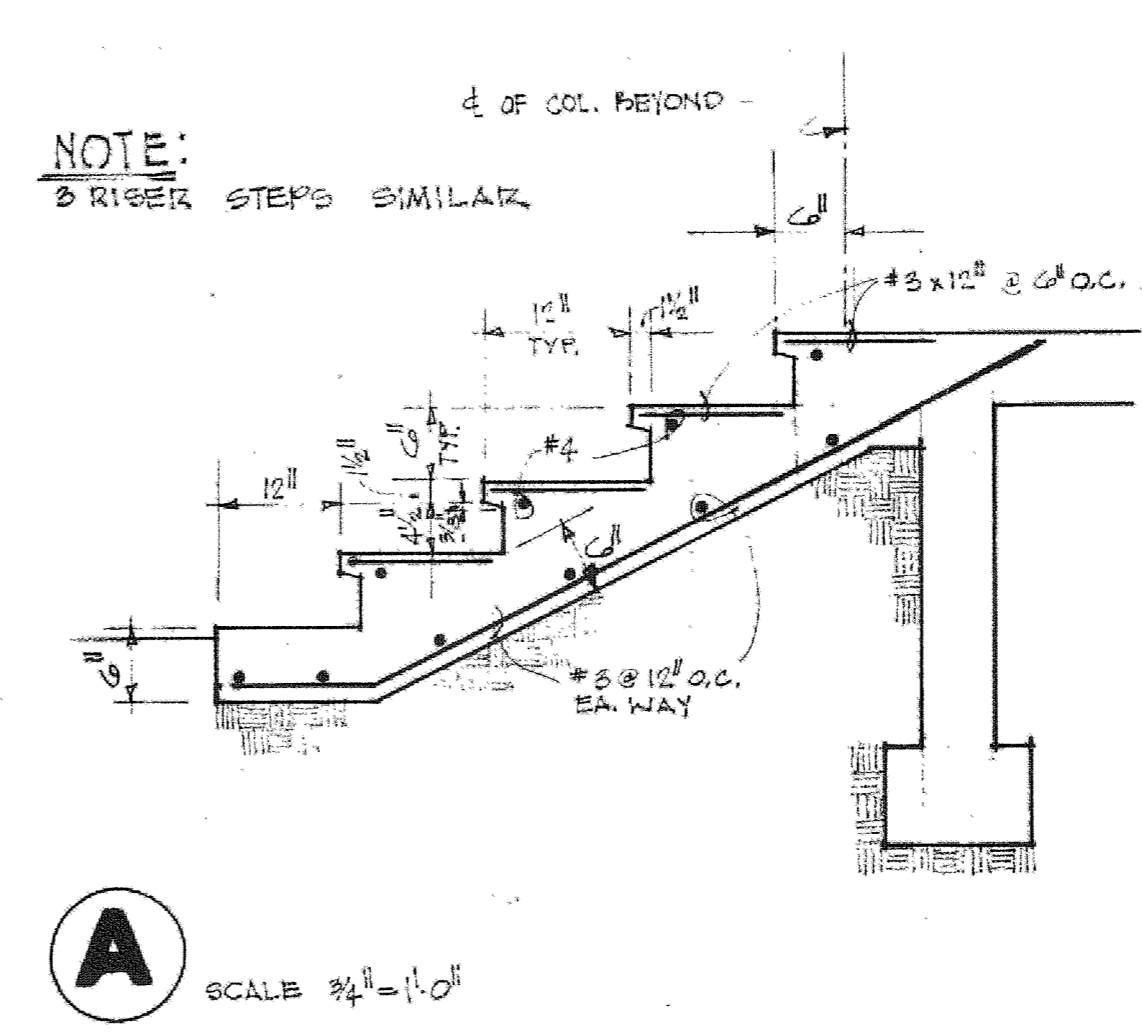
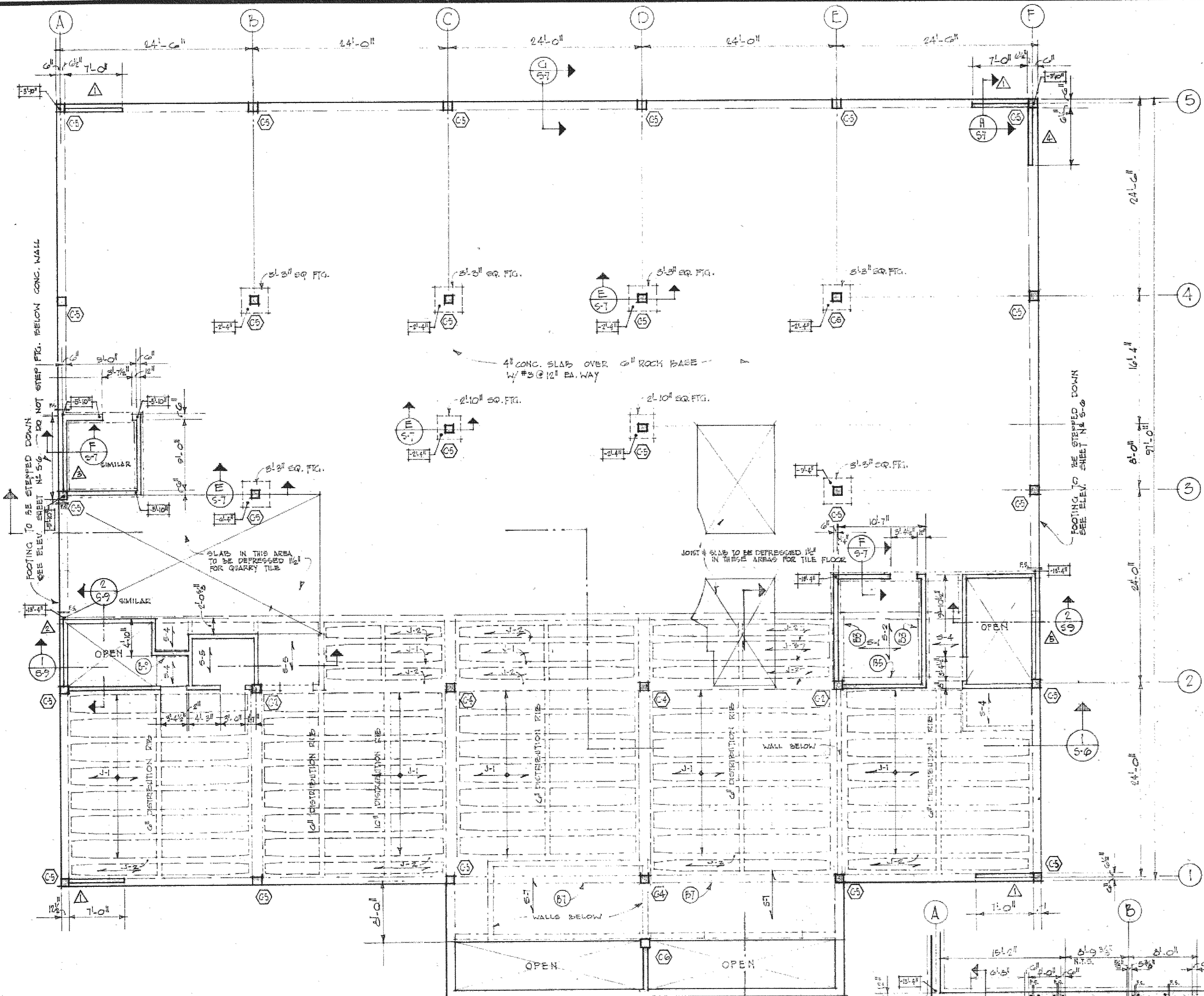
1634 THE ALAMEDA
SAN JOSE, CALIFORNIA 95126

CUPERTINO CITY HALL
S.E. CORNER OF RODRIGUES & TORRE, CUPERTINO, CALIFORNIA

KIRK C. MCFARLAND, JR.
STRUCTURAL ENGINEER
SAN JOSE, CALIFORNIA

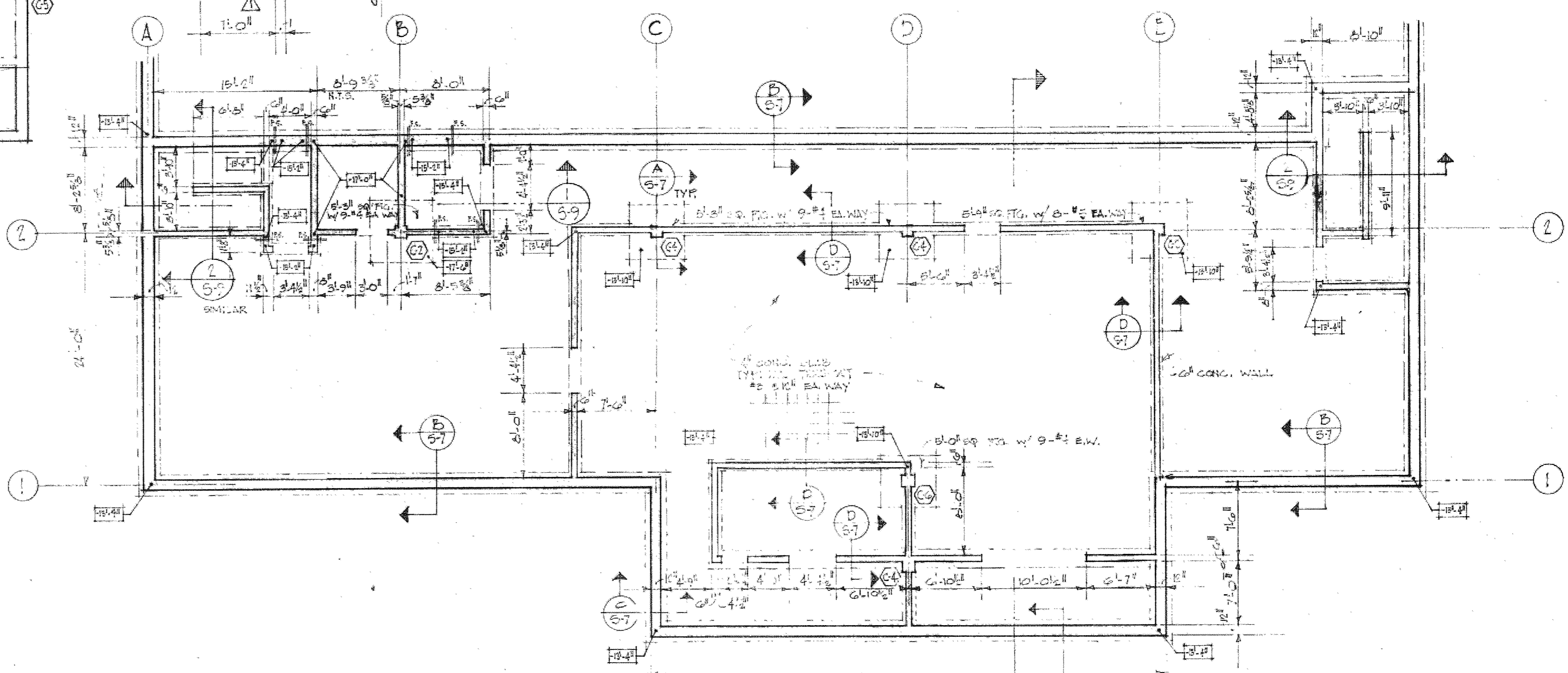
FIRST FLOOR FRAMING PLAN

SHEET
52
9 0

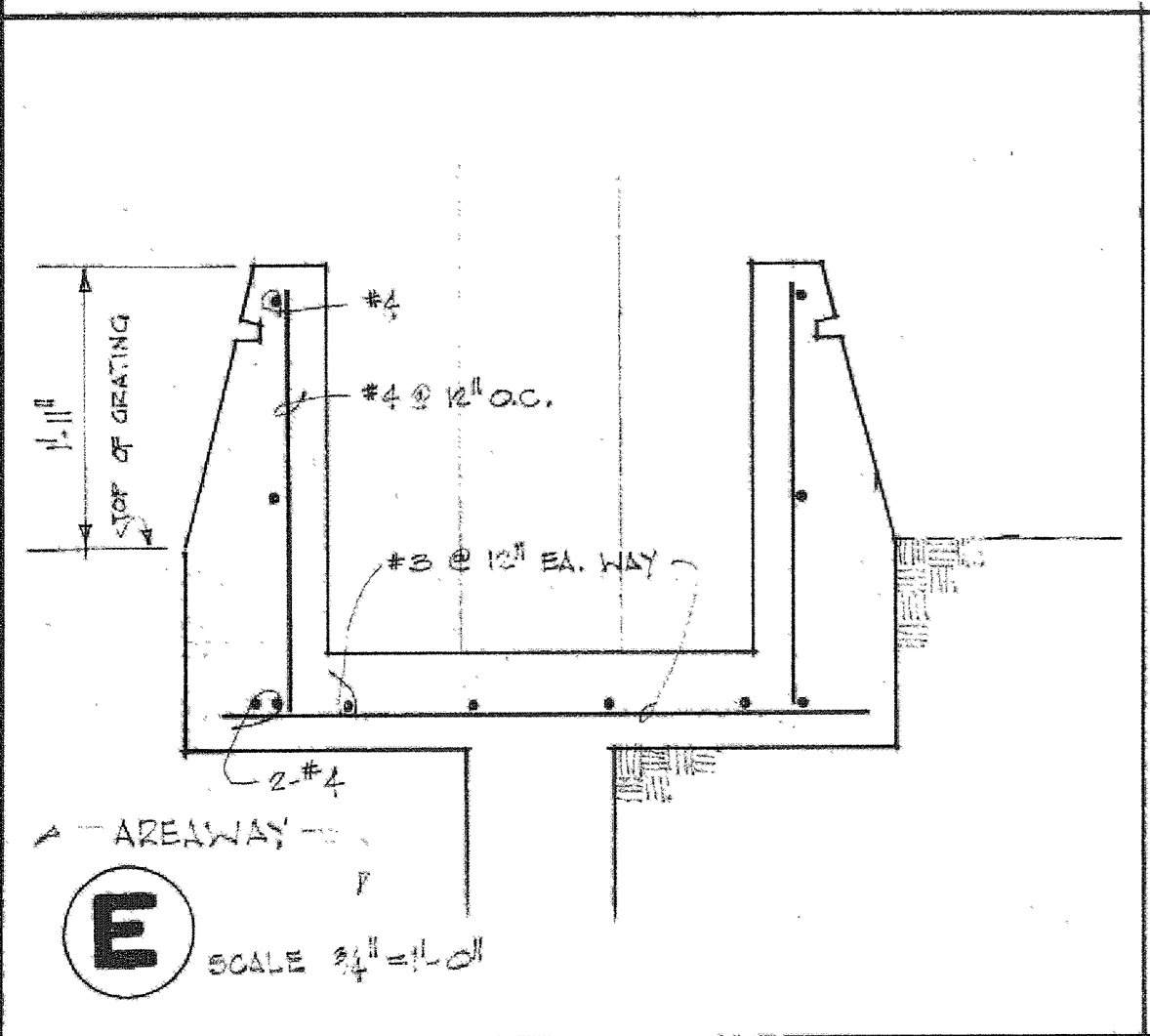


NOTE:
WHERE JOISTS ARE SHOWN DEPRESSIONED FOR A PORTION OF THE SPAN, THAT JOIST SHALL BE DEPRESSIONED OVER THE ENTIRE SPAN.

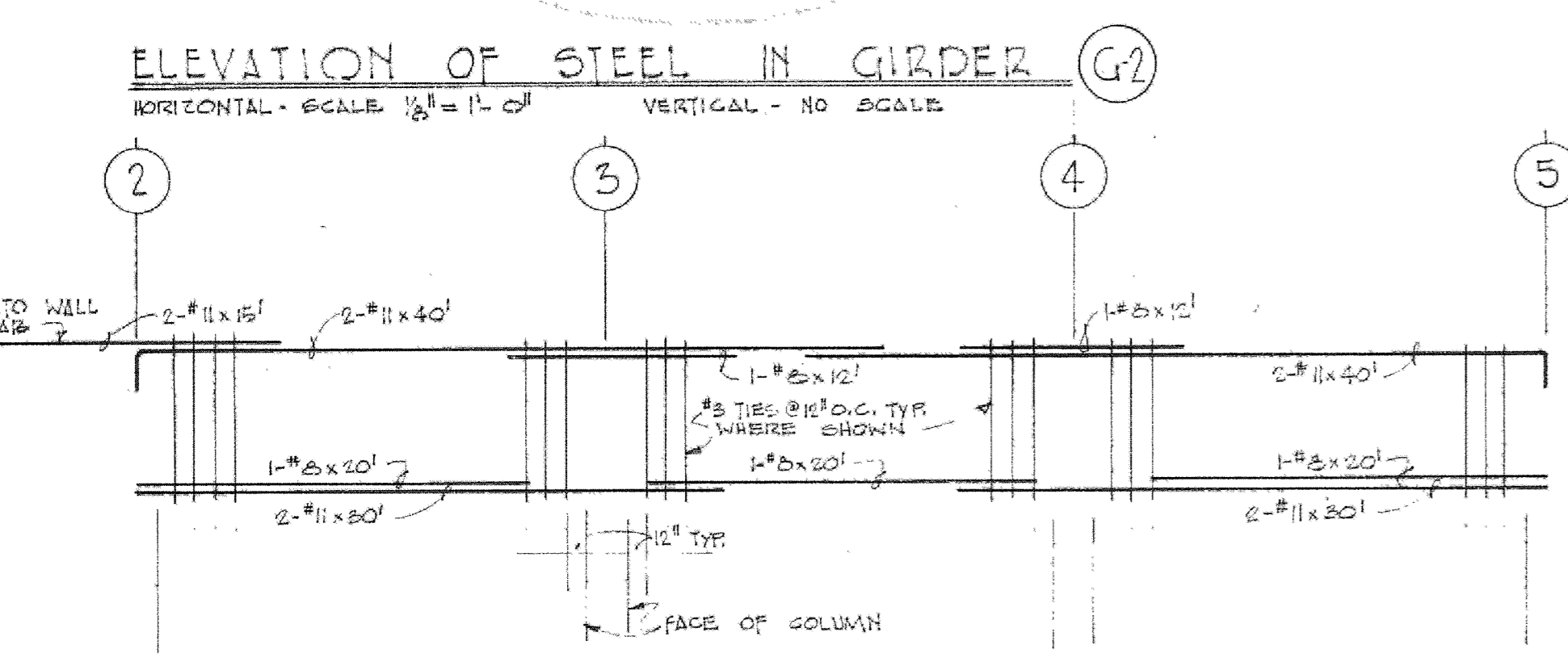
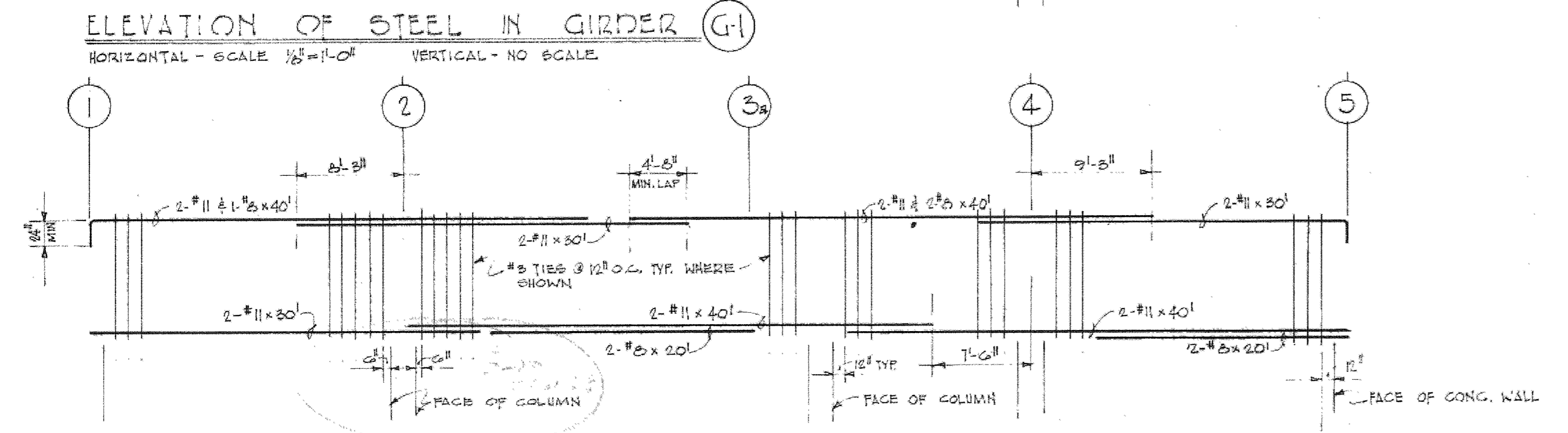
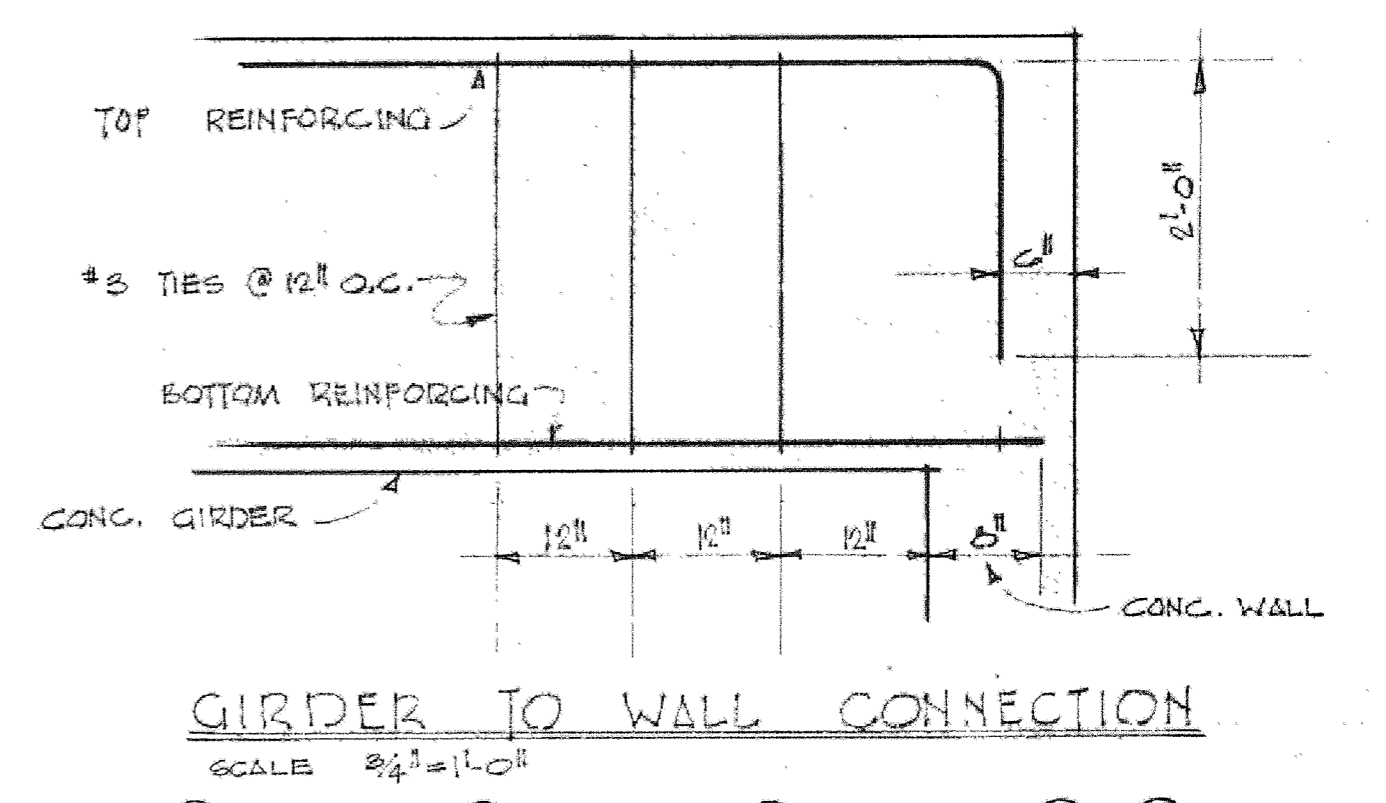
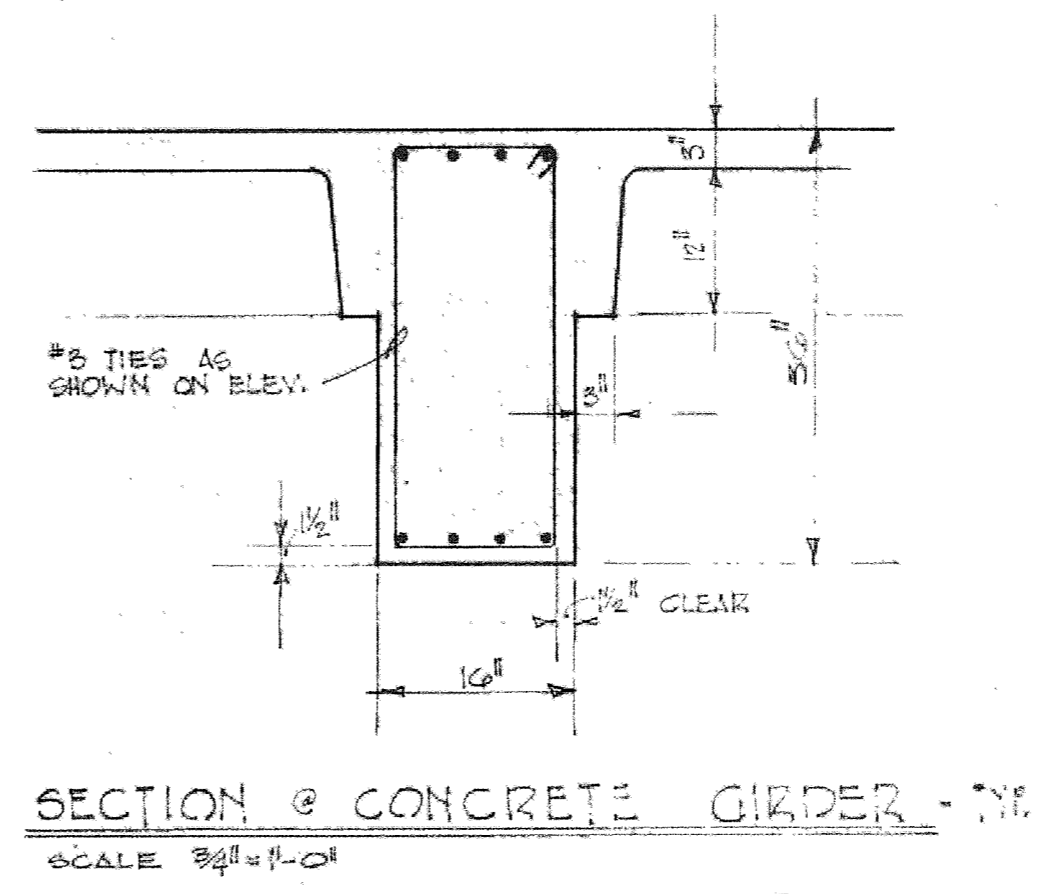
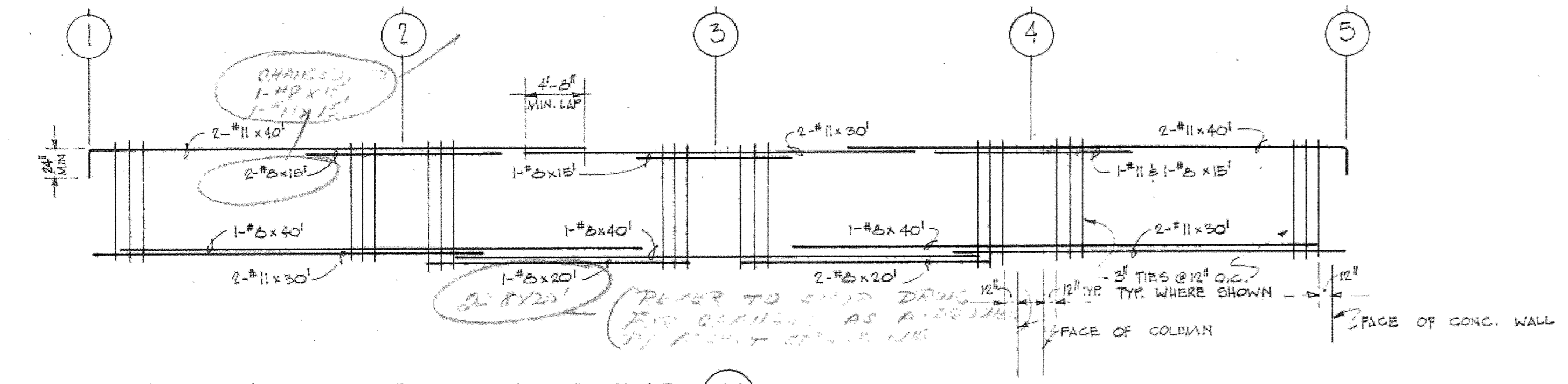
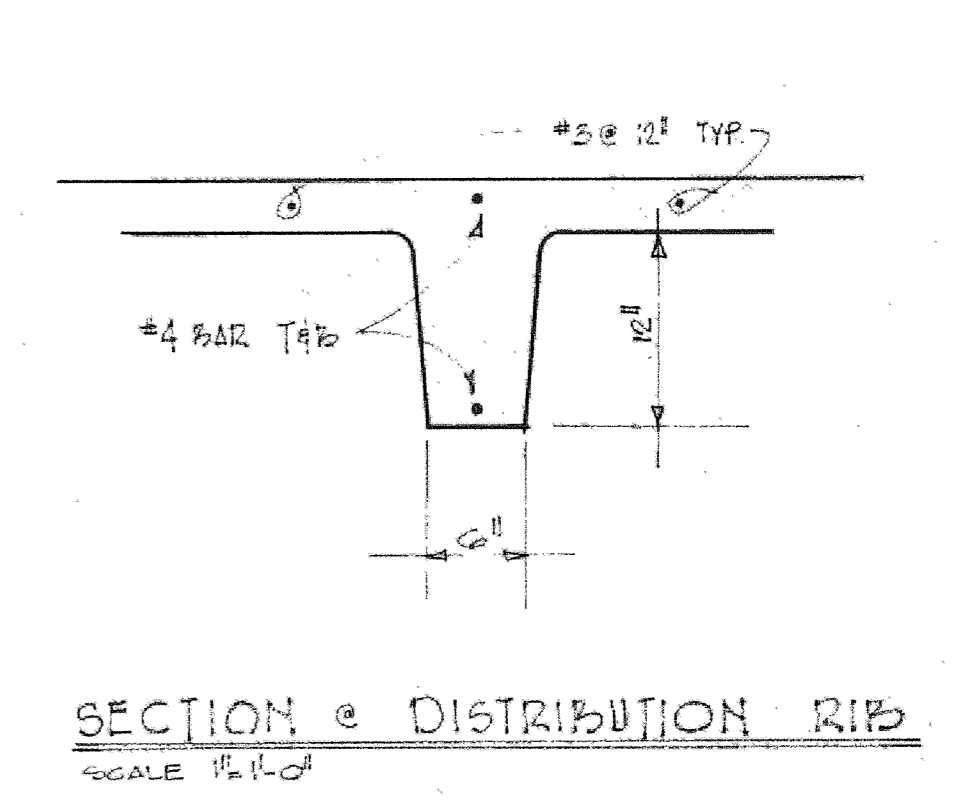
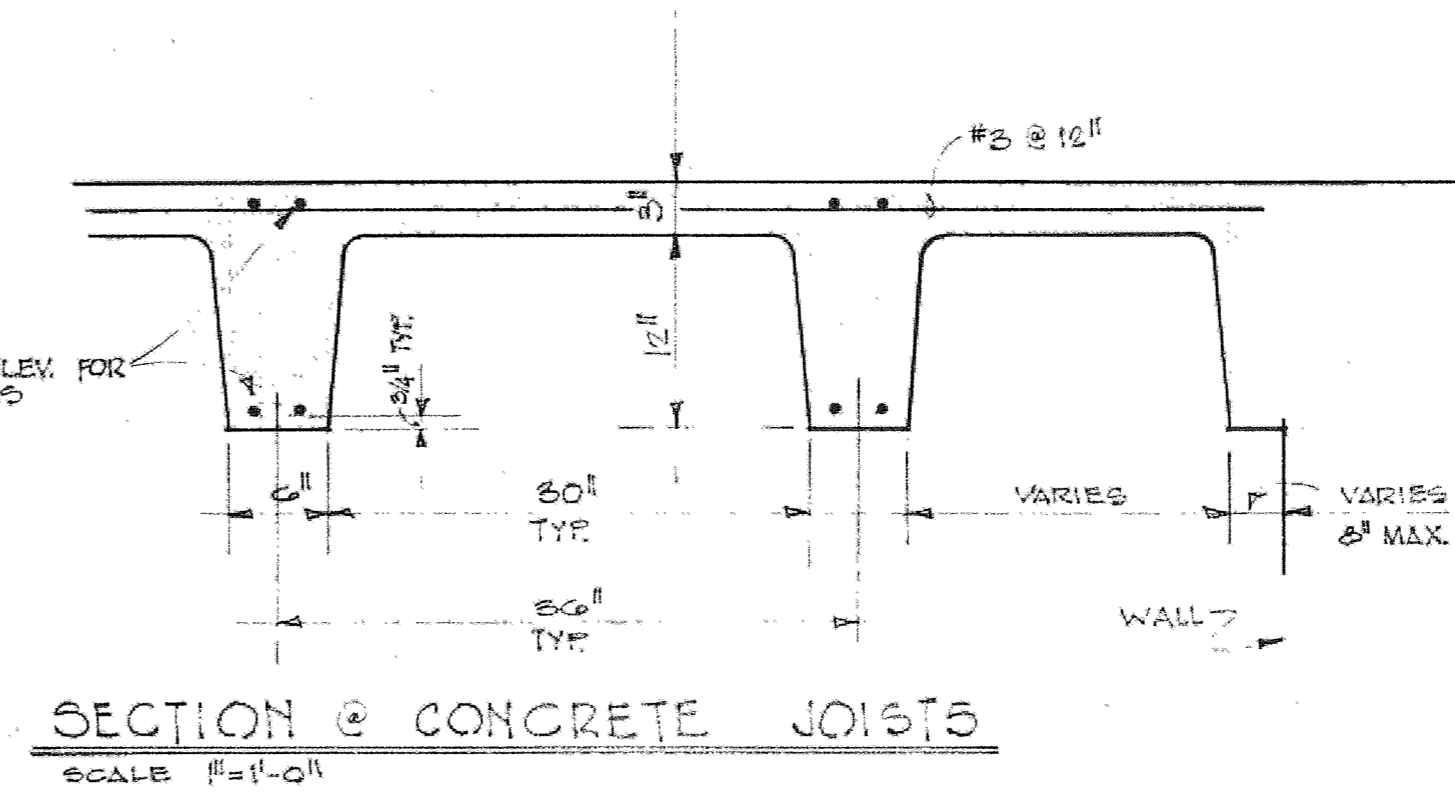
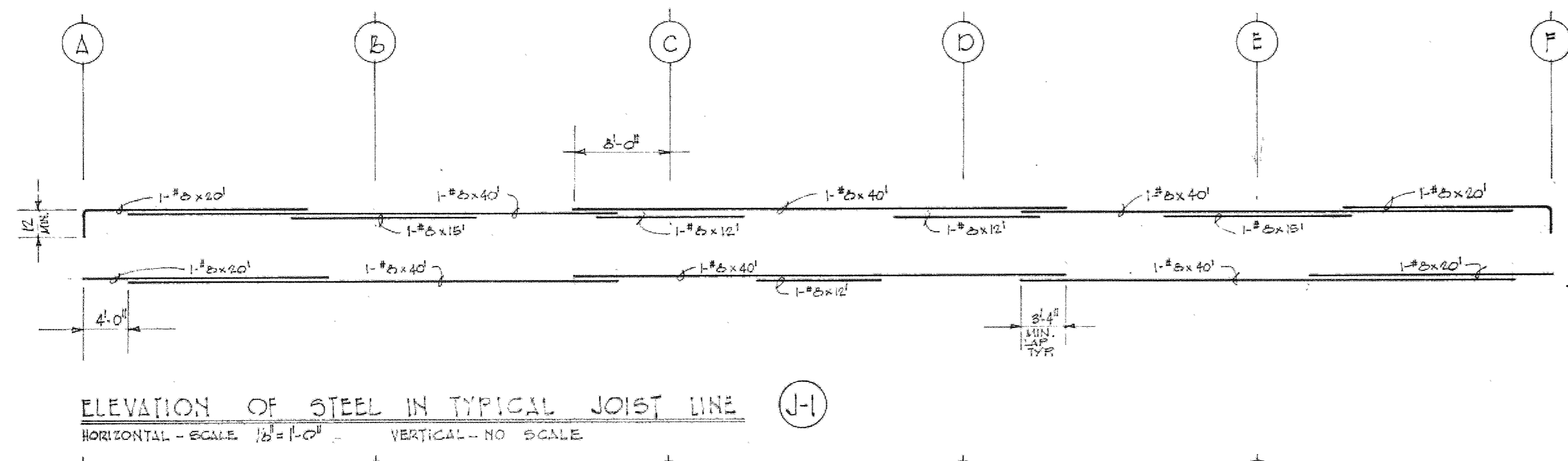
FLOOR FRAMING & FOUNDATION PLAN
1/8" = 1'-0"



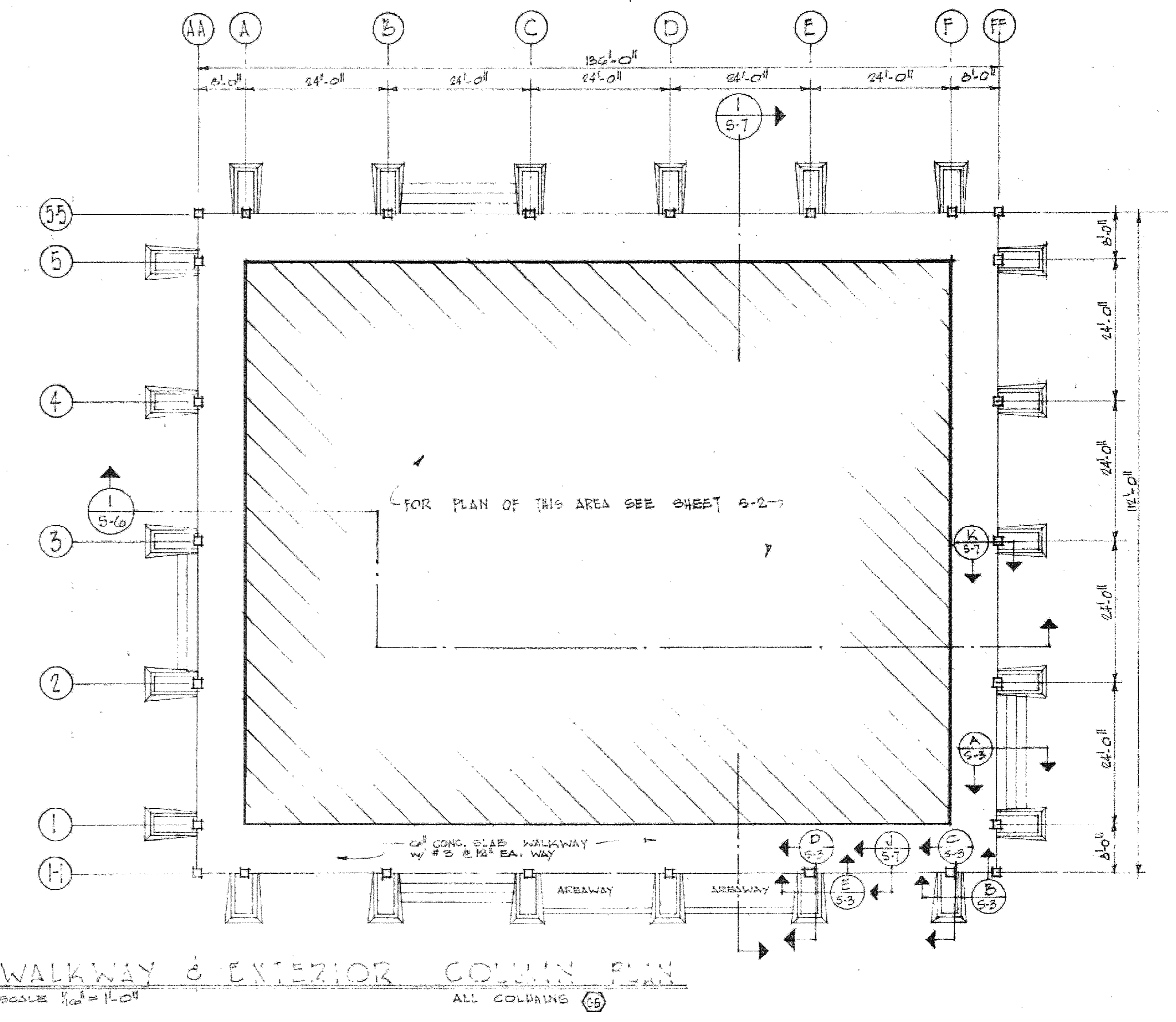
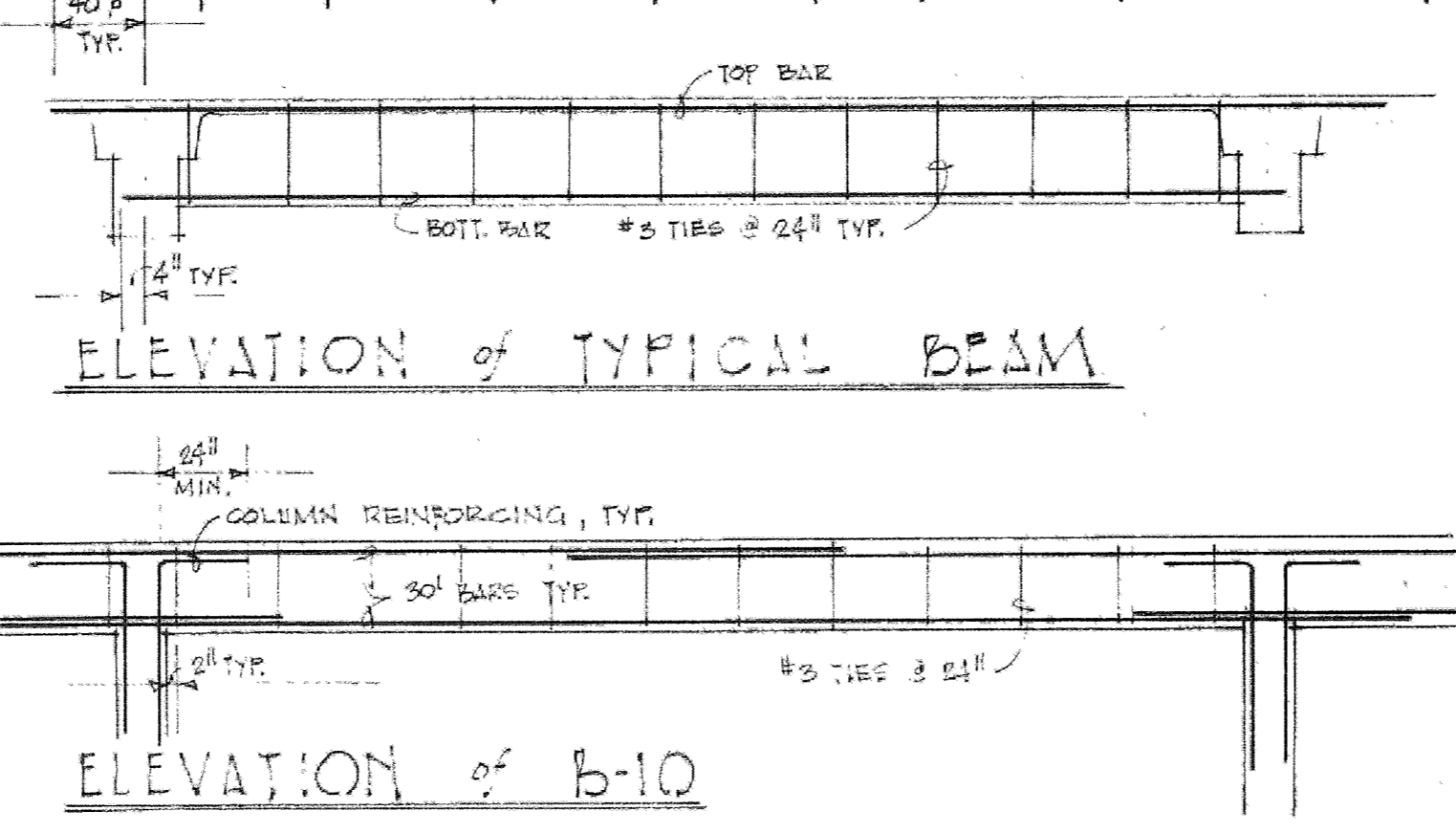
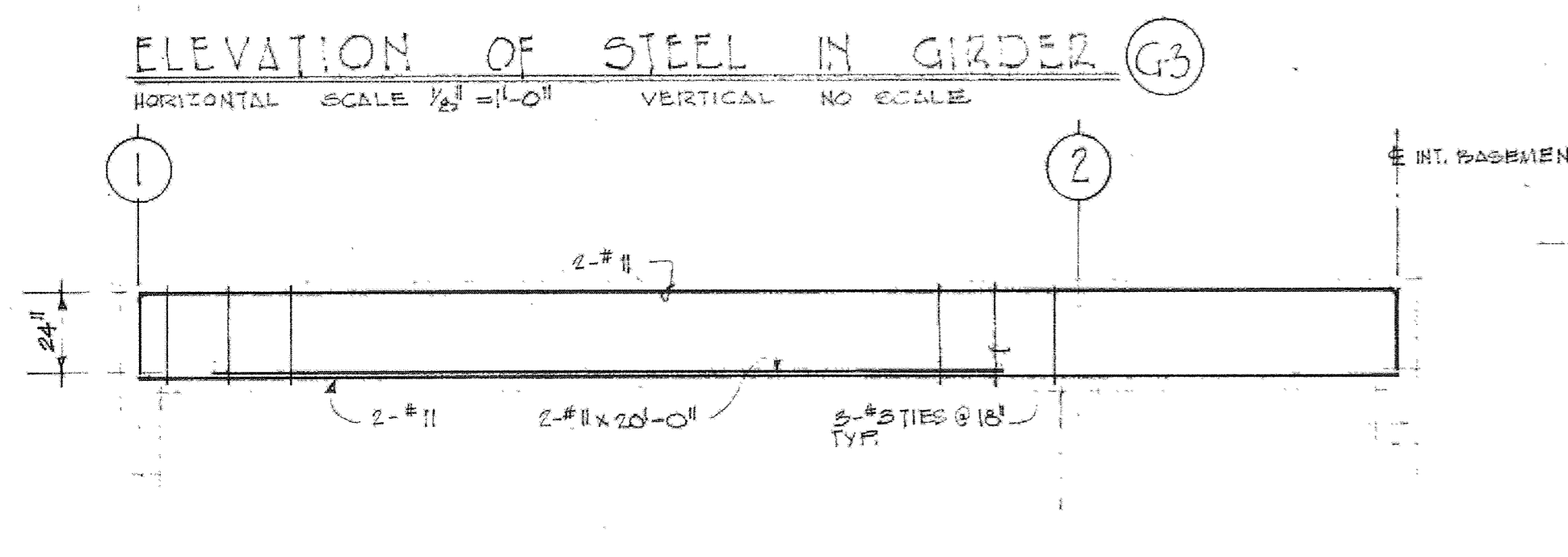
BASEMENT FOUNDATION PLAN
1/8" = 1'-0"



DRAWN BY: WILFRED E. BLESSING A.I.A.
 CHECKED: ARCHITECT & LANDSCAPE ARCHITECT
 DATE: OCT. 1, 1955
 1554 THE ALAMEDA
 SAN JOSE, CALIFORNIA 95126
 WILFRED E. BLESSING A.I.A.
 ARCHITECT & LANDSCAPE ARCHITECT
 1554 THE ALAMEDA
 SAN JOSE, CALIFORNIA 95126
 KIRK C. MCFARLAND, JR.
 STRUCTURAL ENGINEER
 SAN JOSE, CALIFORNIA
 SHEET
53
 OF 10



BEAM & JOIST SCHEDULE						
MARK	WIDTH*DEPTH	REINFORCING		STIRRUPS		REMARKS
		TOP	BOTT	SIZE	NO & SPACING	
J-1	6" x 12"	AS SHOWN ABOVE	AS SHOWN ABOVE	---	---	30" PANS
J-2	6" x 12"	"	"	"	"	20" PANS
J-3	6" x 12"	"	"	"	"	15" PANS
J-4	6" x 12"	"	"	"	"	10" PANS
B-1	12" x 26"	2-#5	4-#9	---	---	SEE TYP. ELEVATION
B-2	12" x 26"	2-#5	4-#9	---	---	" " "
B-3	8" x 18"	1-#5	2-#5	#3	5 @ 12"	" " "
B-4	12" x 20"	2-#5	4-#9	#3	2 @ 10" 1 @ 18"	" " "
B-5	12" x 20"	2-#5	4-#9	#3	2 @ 10" 1 @ 18"	" " "
B-6	10" x 20"	1-#5	2-#9	#3	3 @ 12"	" " "
B-7	12" x 23"	4-#10	2-#10	#3	2 @ 18"	LAP TOP STEEL @ MID-SPAN LAP BOT. @ SUPPORT
B-8	6" x 12"	2-#5	2-#5	---	---	" " "
B-9	6" x 12"	2-#5	2-#5	---	---	" " "
B-10	10" x 15"	2-#5	2-#5	---	---	CAMBER 3/4" SEE ELEV.



NOTE:
 ALTHOUGH NOT SHOWN ON GIRDER ELEVATIONS, PROVIDE #3 TIES @ 24" O.C. FOR ENTIRE LENGTH OF GIRDER, EXCEPT WHERE SHOWN CLOSER.

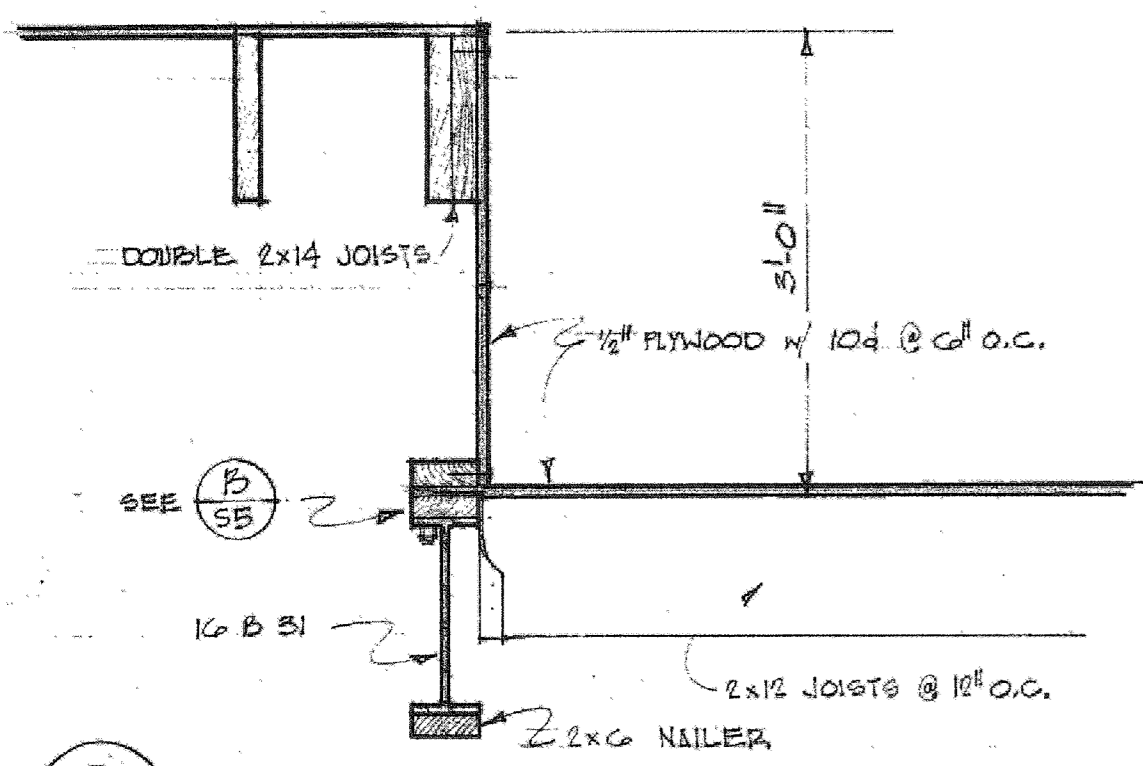
DRAWN BY: WILFRED E. BLESSING
 CHECKED BY: A.I.A.
 ARCHITECT & LANDSCAPE ARCHITECT
 DATE: 1954 THE ALAMEDA
 SAN JOSE, CALIFORNIA 95126
 REVISED:

WILFRED E. BLESSING
 ARCHITECT & LANDSCAPE ARCHITECT
 1654 THE ALAMEDA
 SAN JOSE, CALIFORNIA 95126

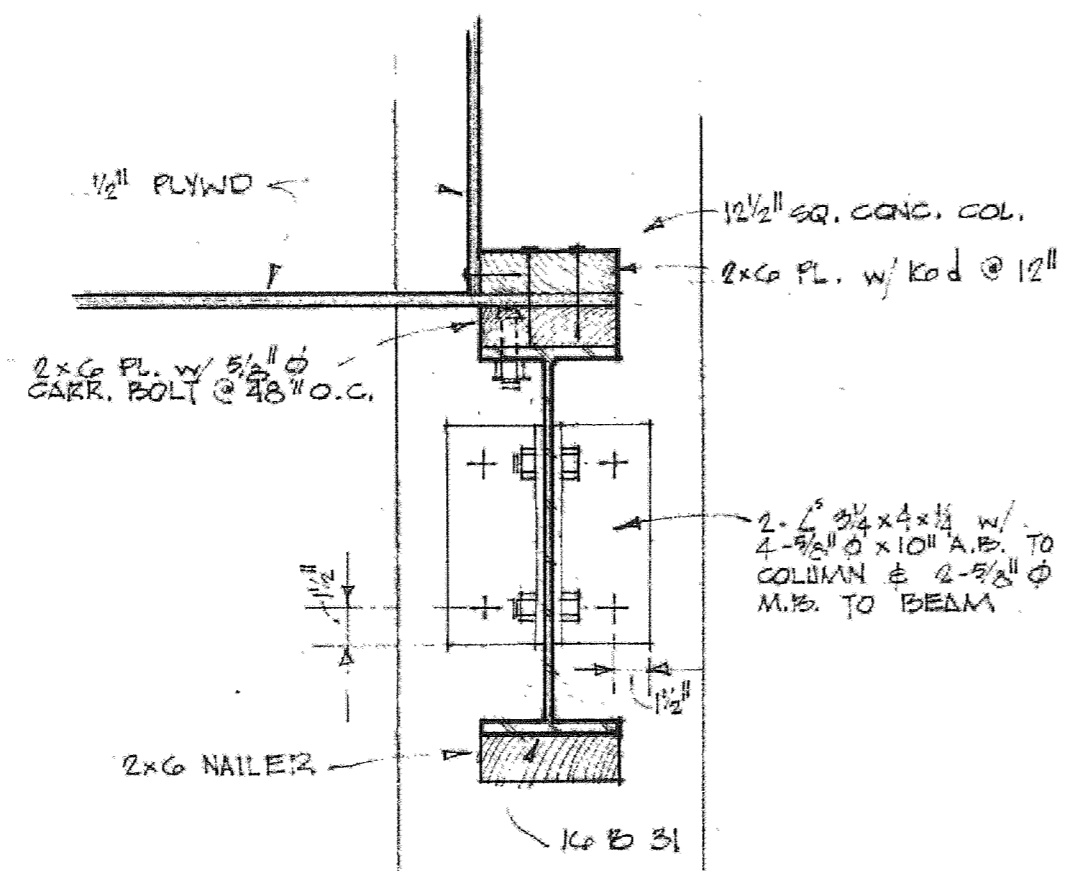
KIRK C. MCFARLAND, JR.
 STRUCTURAL ENGINEER
 SAN JOSE, CALIFORNIA

CUPERTINO CITY HALL
 S.E. CORNER OF RODRIGUES & TORRE, CUPERTINO, CALIFORNIA
 GIRDER, BEAM & JOIST SCHEDULE
 EXTERIOR WALKWAY & COLUMN PLAN

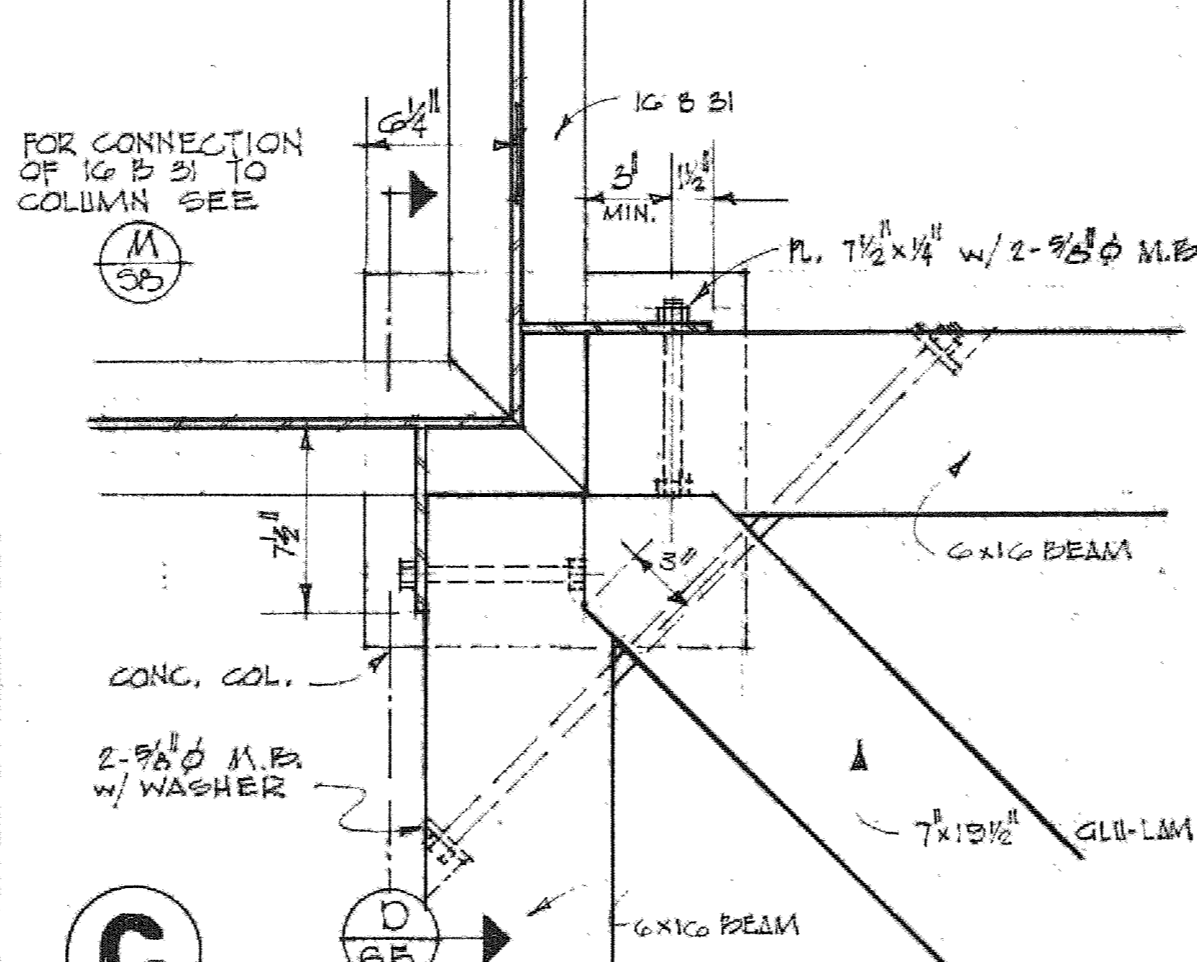
SHEET
S 4
 OF 10



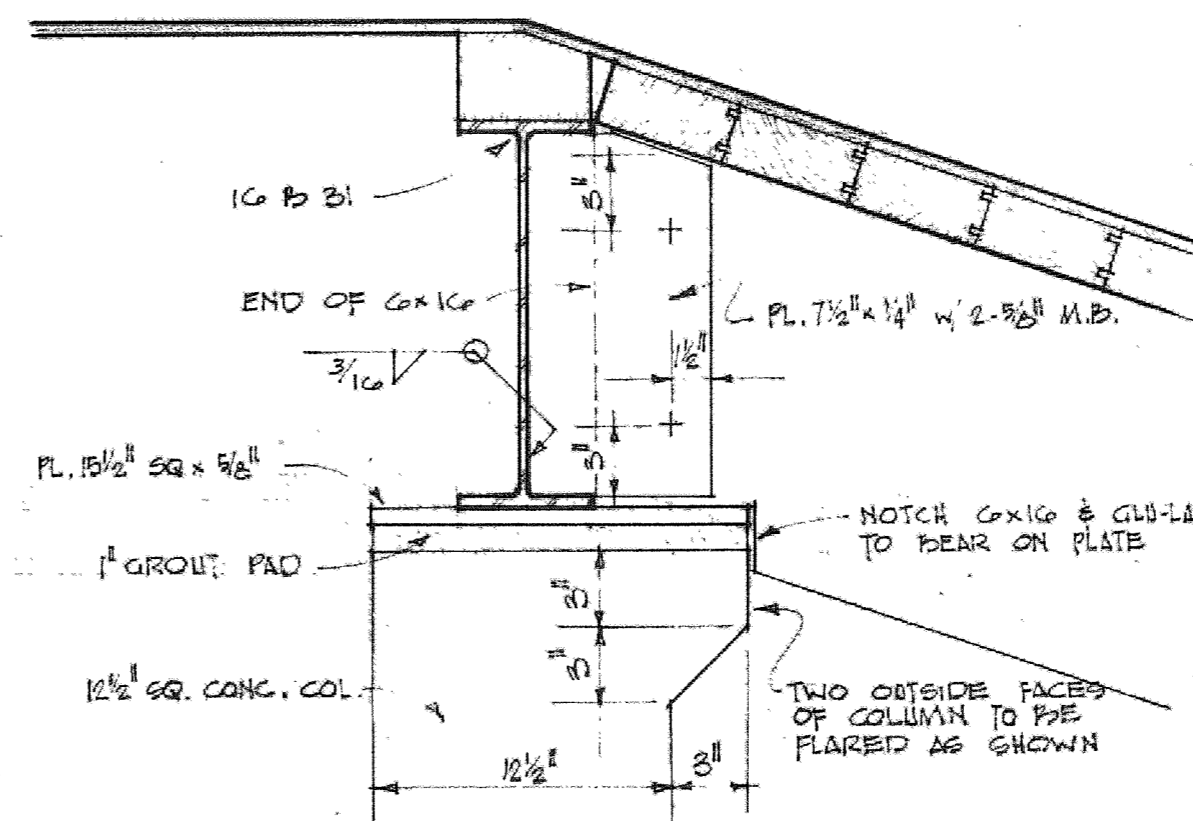
A SCALE 3/8"=1'-0"



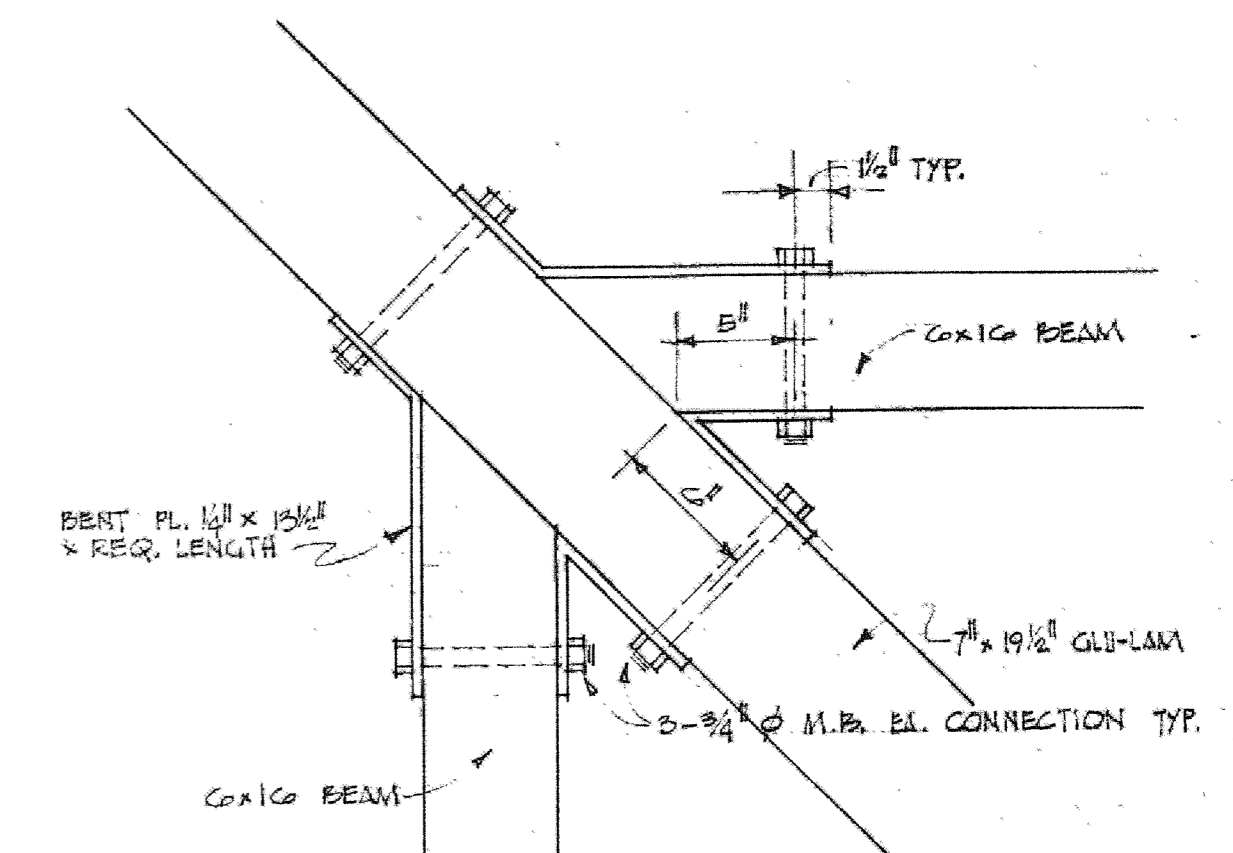
B SCALE 1/2"=1'-0"



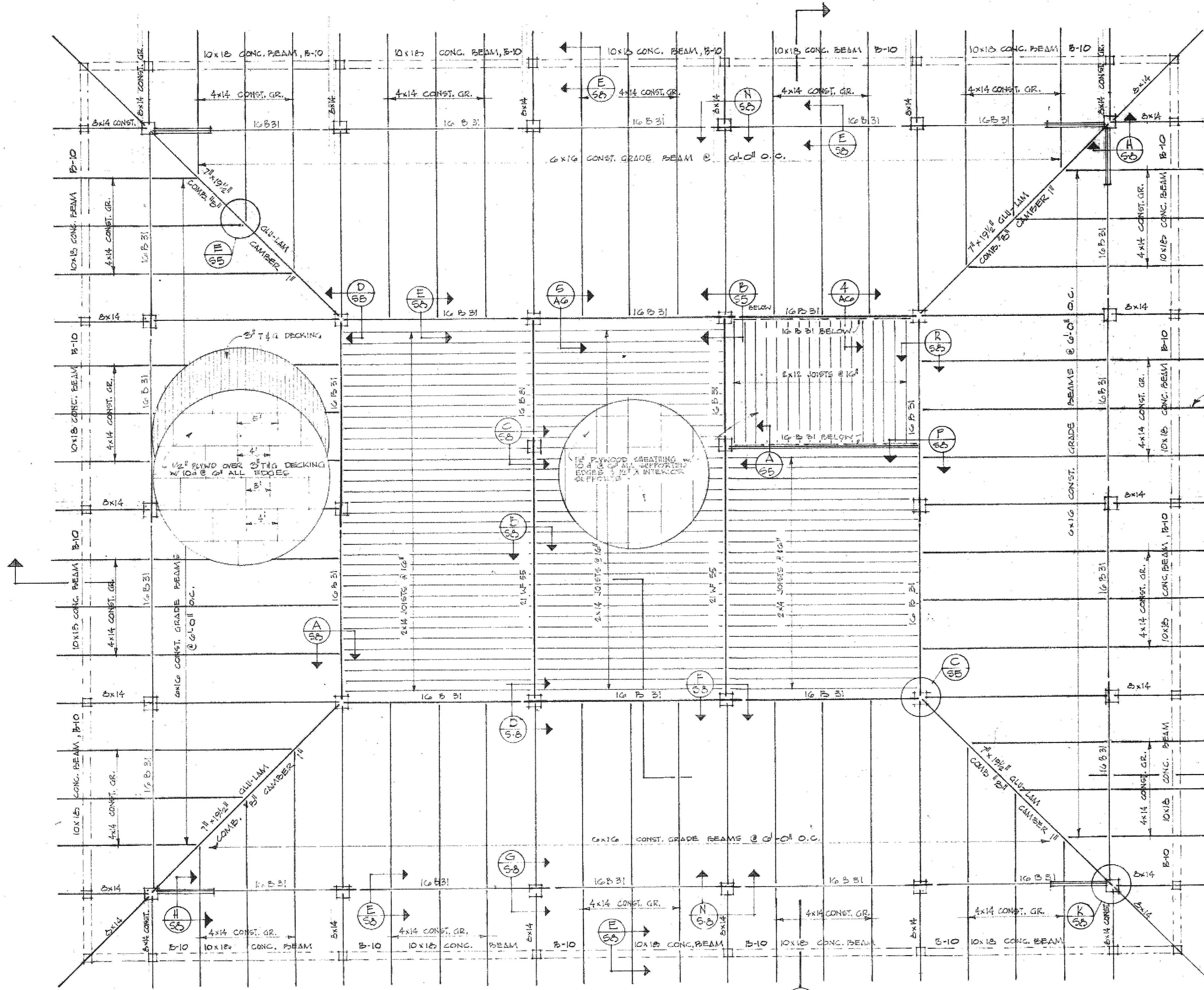
C SCALE 1/2"=1'-0"



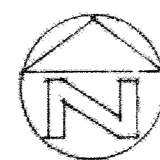
D SCALE 1/2"=1'-0"



E SCALE 1/2"=1'-0"



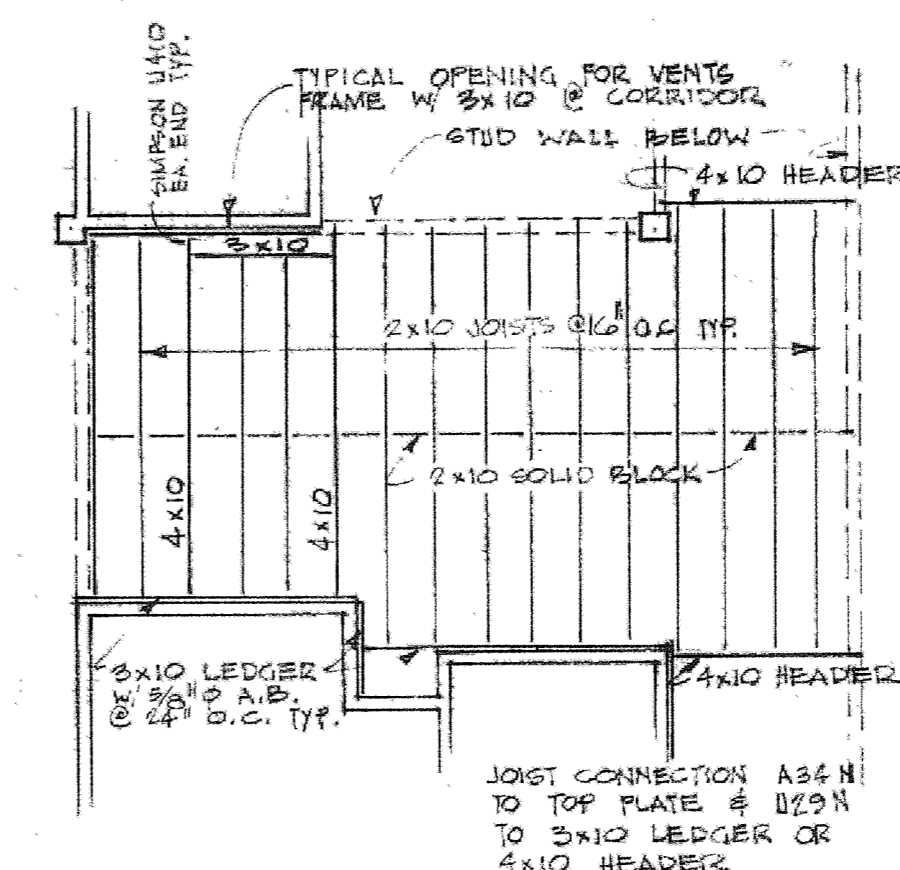
ROOF FRAMING PLAN
SCALE 1/8"=1'-0"



NOTE:
ALL NAILERS TO BE ATTACHED W/ 1/2" Ø BETWEEN SAFETY TIMBER BOLTS @ 48" O.C. TO RF MEMBERS

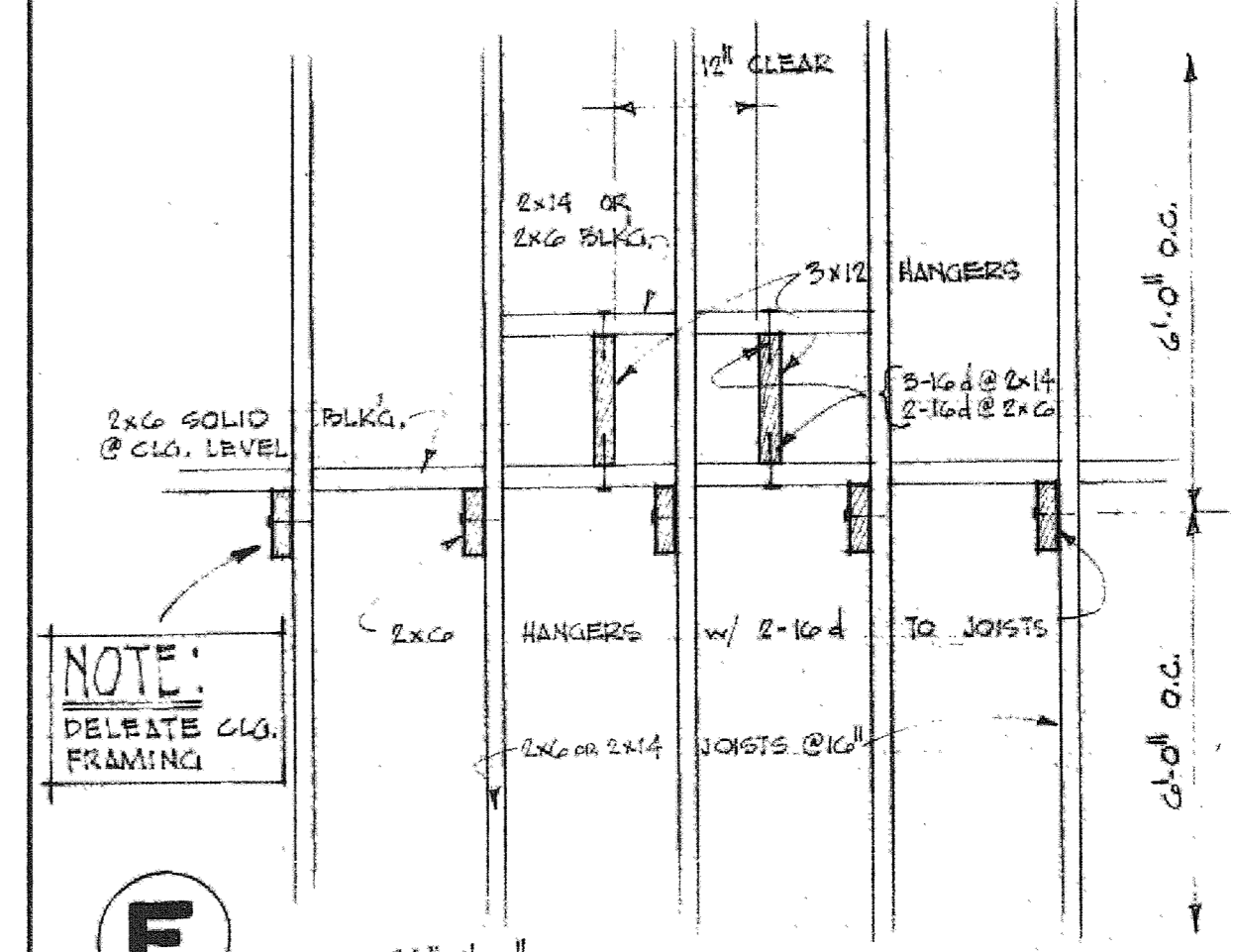
HEADER SCHEDULE	
2x4 STUDS	2x6 STUDS
6" OPENING 2-2x6	6" OPENING 3-2x6
8" OPENING 2-2x6	8" OPENING 3-2x6
10" OPENING 2-2x6	10" OPENING 3-2x6
12" OPENING 2-2x6	12" OPENING 3-2x6
14" OPENING 2-2x6	14" OPENING 3-2x6
16" OPENING 2-2x6	16" OPENING 3-2x6
18" OPENING 2-2x6	18" OPENING 3-2x6
20" OPENING 2-2x6	20" OPENING 3-2x6
22" OPENING 2-2x6	22" OPENING 3-2x6
24" OPENING 2-2x6	24" OPENING 3-2x6
26" OPENING 2-2x6	26" OPENING 3-2x6
28" OPENING 2-2x6	28" OPENING 3-2x6
30" OPENING 2-2x6	30" OPENING 3-2x6
32" OPENING 2-2x6	32" OPENING 3-2x6
34" OPENING 2-2x6	34" OPENING 3-2x6
36" OPENING 2-2x6	36" OPENING 3-2x6
38" OPENING 2-2x6	38" OPENING 3-2x6
40" OPENING 2-2x6	40" OPENING 3-2x6
42" OPENING 2-2x6	42" OPENING 3-2x6
44" OPENING 2-2x6	44" OPENING 3-2x6
46" OPENING 2-2x6	46" OPENING 3-2x6
48" OPENING 2-2x6	48" OPENING 3-2x6
50" OPENING 2-2x6	50" OPENING 3-2x6
52" OPENING 2-2x6	52" OPENING 3-2x6
54" OPENING 2-2x6	54" OPENING 3-2x6
56" OPENING 2-2x6	56" OPENING 3-2x6
58" OPENING 2-2x6	58" OPENING 3-2x6
60" OPENING 2-2x6	60" OPENING 3-2x6

NOTE:
4x14 BEAM SPACING = 6'-0" O.C. TYP. THROUGH OUT BLDG.

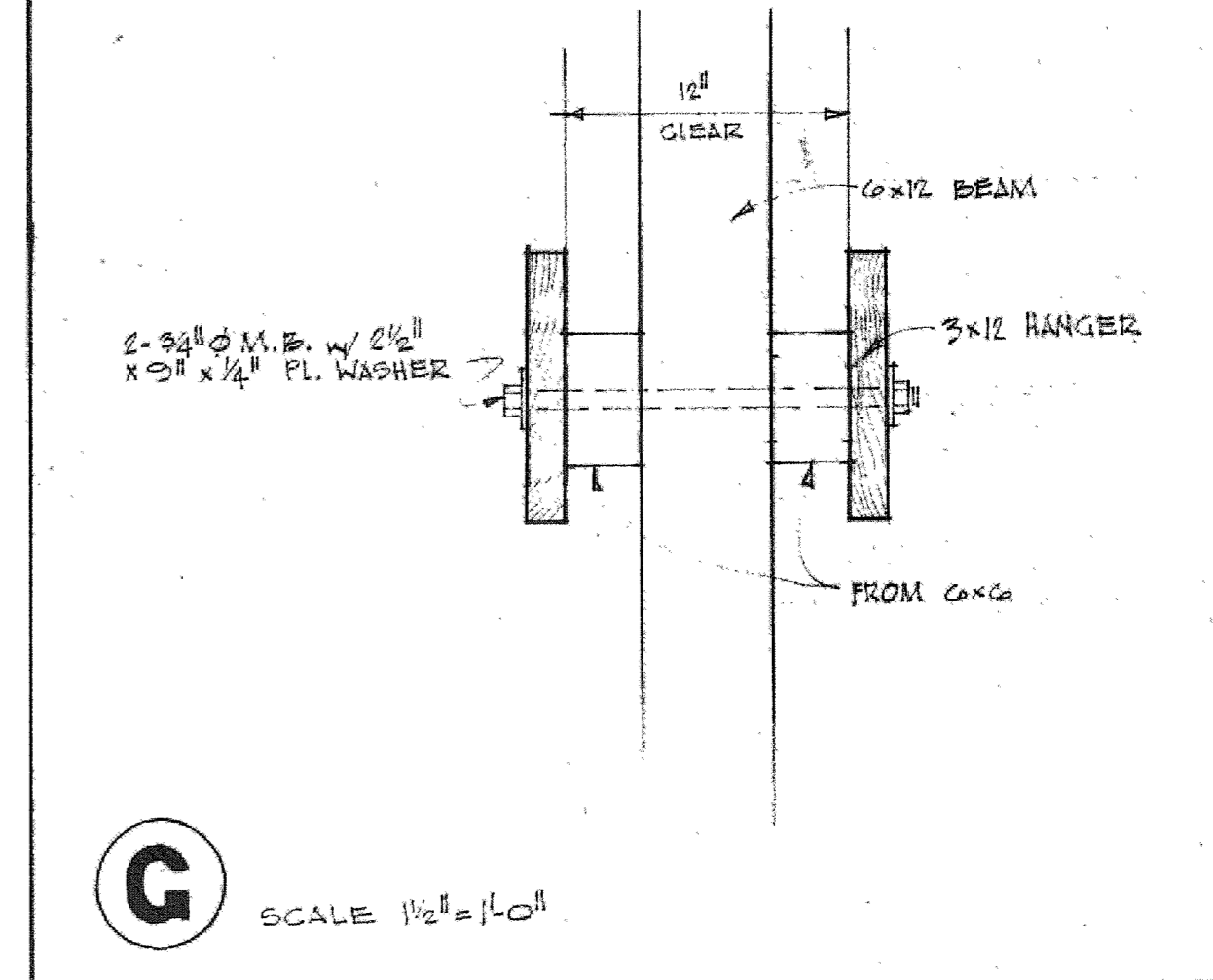


LOBBY CLG. FRAMING PLAN
SCALE 1/2"=1'-0"

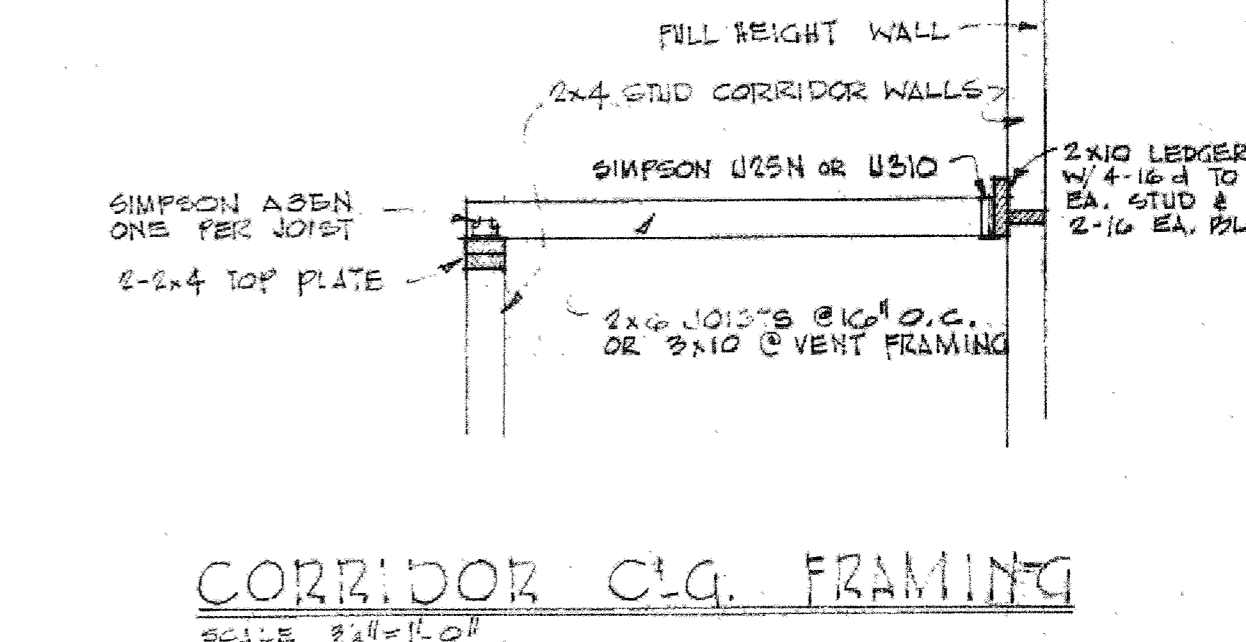
NOTE:
DELETE CLG. FRAMING



F SCALE 3/8"=1'-0"



G SCALE 1/2"=1'-0"



CORRIDOR CLG. FRAMING
SCALE 3/8"=1'-0"