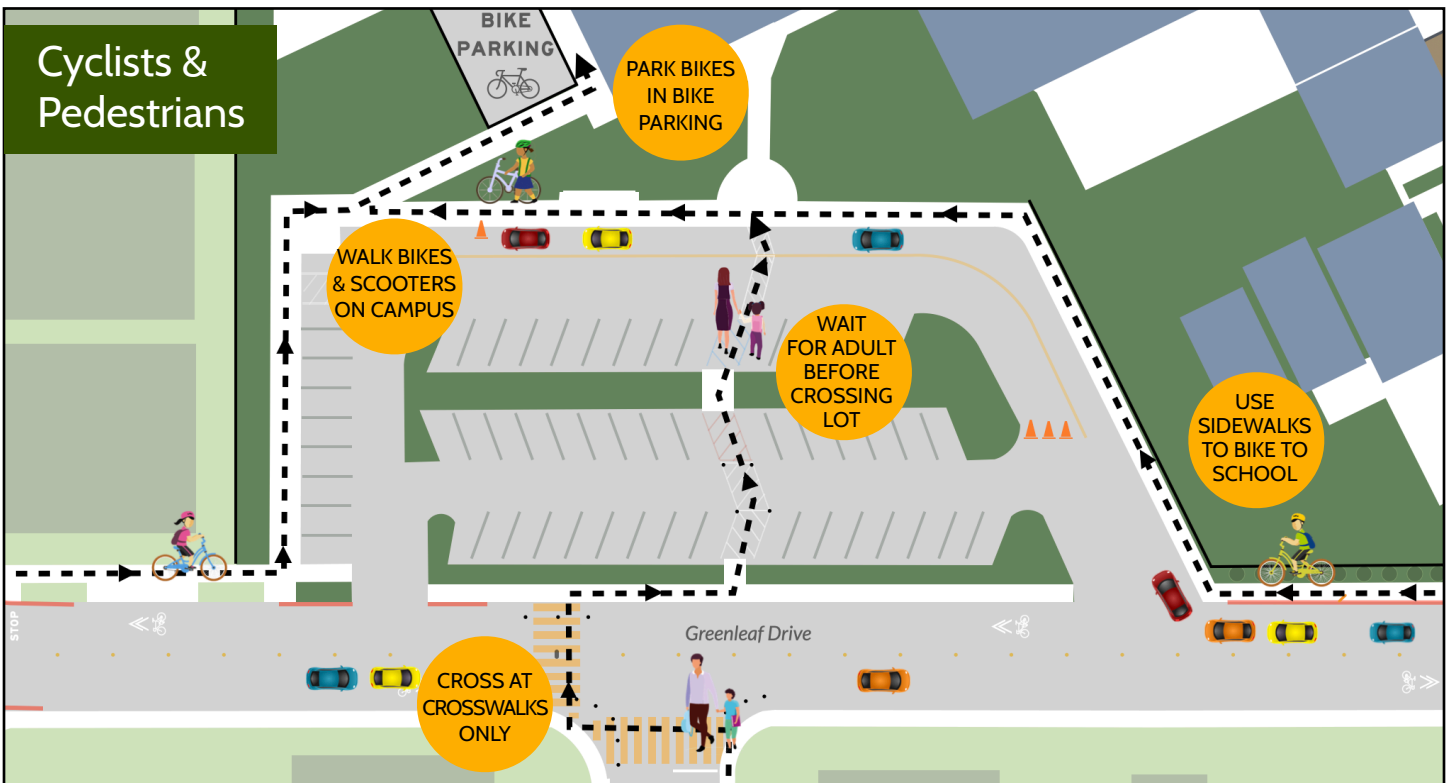


GARDEN GATE ELEMENTARY DROP OFF & PICKUP RULES

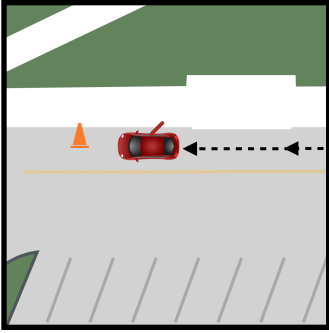
Vehicle Drop Off



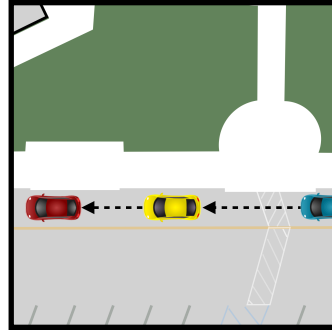
Cyclists & Pedestrians



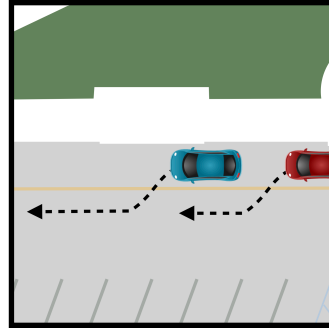
How to drop off at Garden Gate



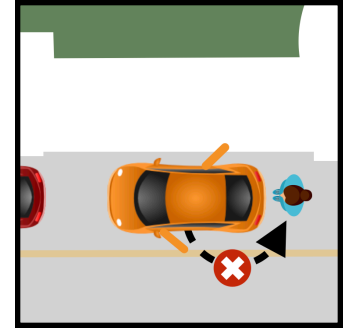
Pull all the way to end of the dropoff zone **before** letting your child out.



Move your car forward when the next car ahead of you moves forward.

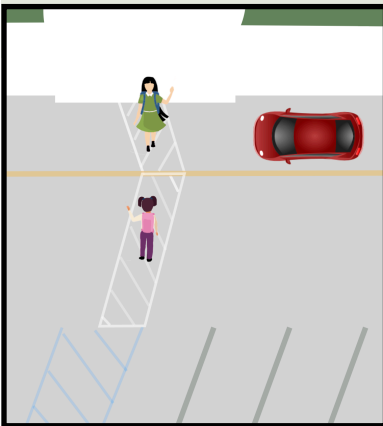


Once you have dropped off your child, pull away from the curb to exit the lot.

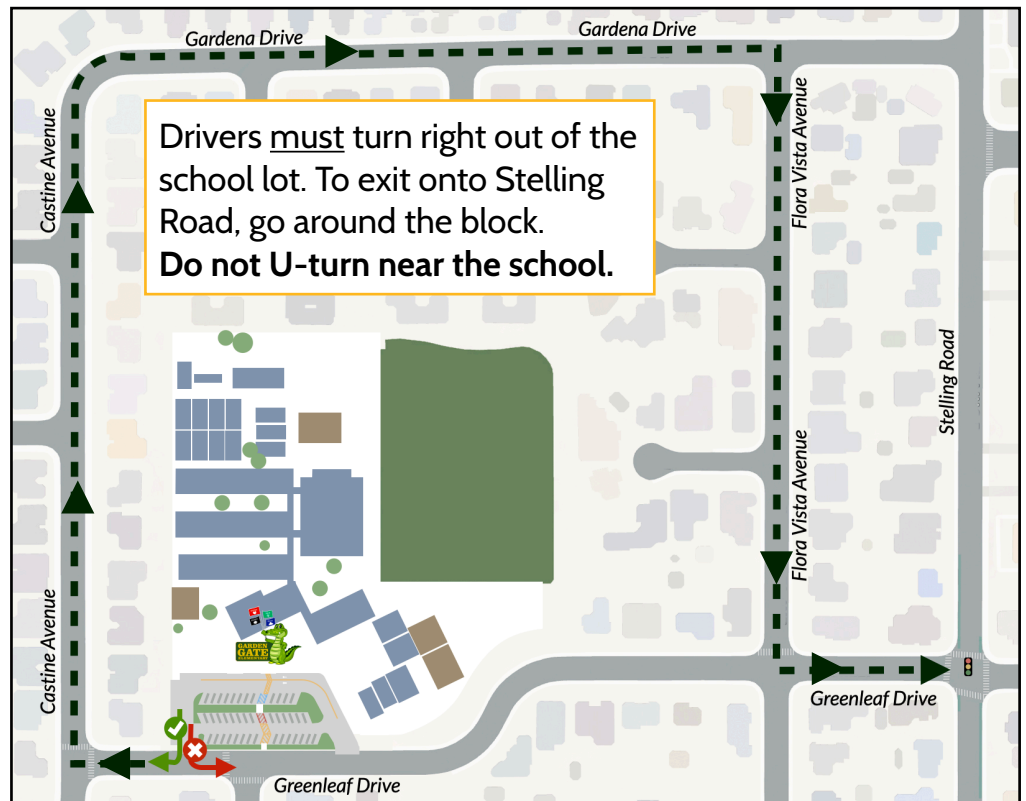
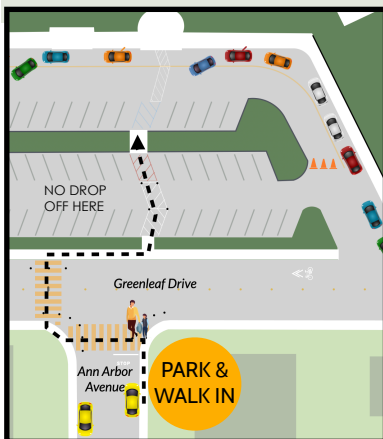


Be ready to drop off. Don't get out of the car or have backpacks in the trunk.

Watch for students crossing the drop off lane in the crosswalk!



Parking across from school on Ann Arbor and walking to school is a great way to save time!



Encourage your child to walk or bike to Garden Gate every day!

- You can avoid the traffic jams near school.
- Studies show increased school success for children who walk or bike to school.
- You can save gas and be more green.



walkbikecupertino.org